

**WATER SERVICE INFORMATION**

ADDRESS	SIZE (mm) MATERIAL (STREET)	SIZE (mm) MATERIAL (PROP.)	SHORT & LONG MEASUREMENT	CORP LOCATION	REMARKS
1 CHIPPAWA BAY RESIDENTIAL	-	20	0.80 SNL HSE	-	RECONNECT SERVICE
2 CHIPPAWA BAY RESIDENTIAL	-	20	1.77 SNL HSE	-	RECONNECT SERVICE
3 CHIPPAWA BAY RESIDENTIAL	-	20	6.368 SSL COMANCHE RD	-	RECONNECT SERVICE
4 CHIPPAWA BAY RESIDENTIAL	-	20	6.368 SSL COMANCHE RD	-	RECONNECT SERVICE
5 CHIPPAWA BAY RESIDENTIAL	-	20	22.939 SSL COMANCHE RD	-	RECONNECT SERVICE
6 CHIPPAWA BAY RESIDENTIAL	-	20	6.86 SNL HSE	-	RECONNECT SERVICE
7 CHIPPAWA BAY RESIDENTIAL	-	20	31.382 SSL COMANCHE RD	-	RECONNECT SERVICE
8 CHIPPAWA BAY RESIDENTIAL	-	20	1.99 NSL HSE	-	RECONNECT SERVICE
9 CHIPPAWA BAY RESIDENTIAL	-	20	54.016 SSL COMANCHE RD	-	RECONNECT SERVICE
10 CHIPPAWA BAY RESIDENTIAL	-	20	1.21 EWL HSE	-	RECONNECT SERVICE
11 CHIPPAWA BAY RESIDENTIAL	-	20	55.968 SSL COMANCHE RD	-	RECONNECT SERVICE

\* SERVICES TO BE RENEWED TO R. ALL OTHERS TO BE RECONNECTED

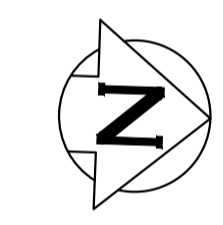
- 0+97.67 ABANDON EXIST 150-90° BEND
- 0+98.00 INSTALL 150-45° BEND
- 0+99.41 ABANDON EXIST 150 COUPLING
- 1+00.000 N. E. OF CHIPPAWA (S-LEG)
- 1+00.59 INSTALL 150-45° BEND
- 1+01.71 ABANDON EXIST 150 COUPLING
- 1+02.21 ABANDON EXIST 150 COUPLING
- 1+36.32 ABANDON EXIST 150 COUPLING
- 1+37.35 ABANDON EXIST 150-45° BEND
- 1+38.28 ABANDON EXIST 150-45° BEND
- 1+39.623 S. E. OF COMANCHE ROAD
- 1+39.57 REMOVE EXIST 150 VALVE AND CONNECT TO 150 PVC WM W/150 VALVE

NOTE: CHAINAGES SHOWN ARE ALONG W. E. OF CHIPPAWA BAY (E-LEG)

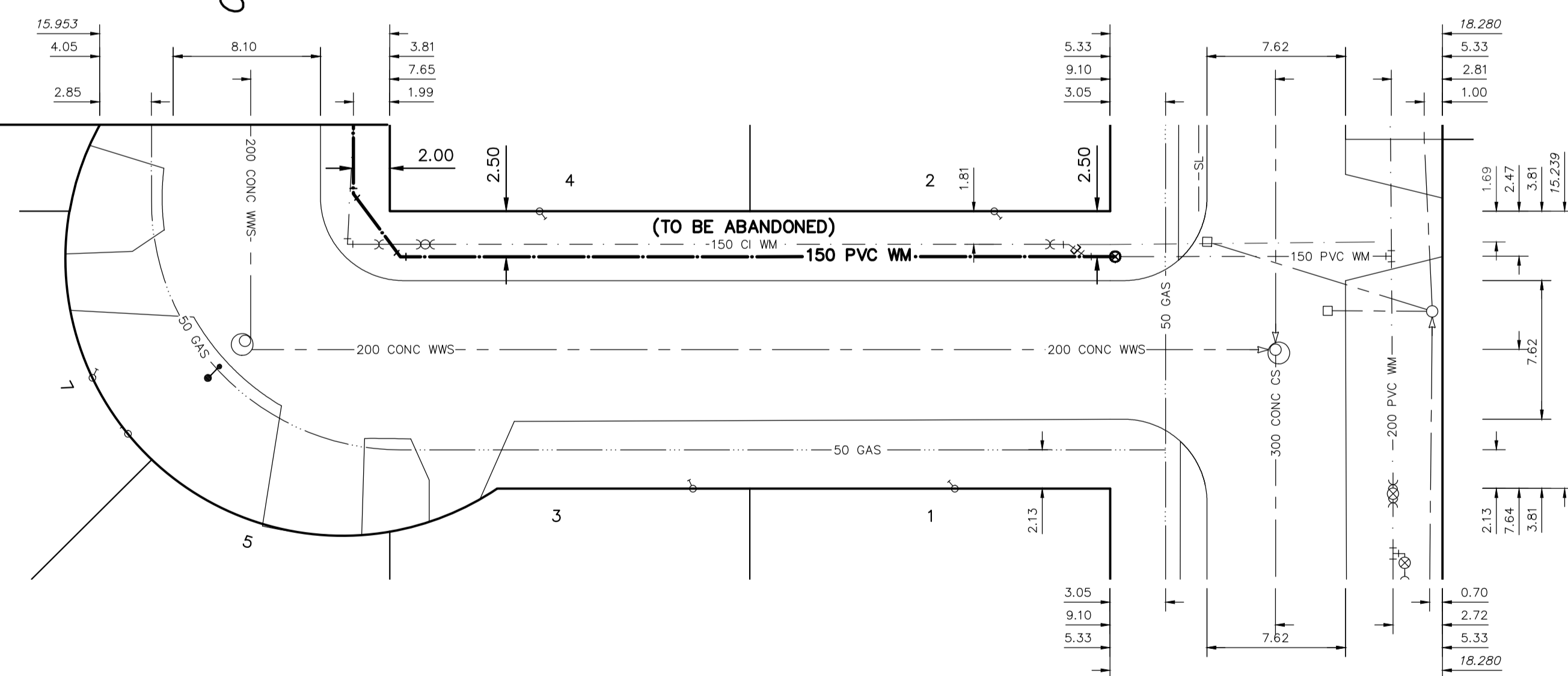
CHIPPAWA BAY (S-LEG)

CHIPPAWA BAY (E-LEG)

COMANCHE RD

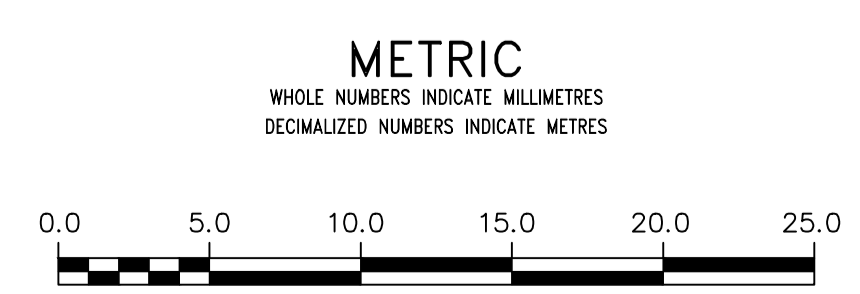


FOR CONTINUATION SEE DWG D-16505



FOR INDEX SEE D-16501

NOTE: ALL VALVES TO BE INSTALLED CLOCKWISE TO CLOSE



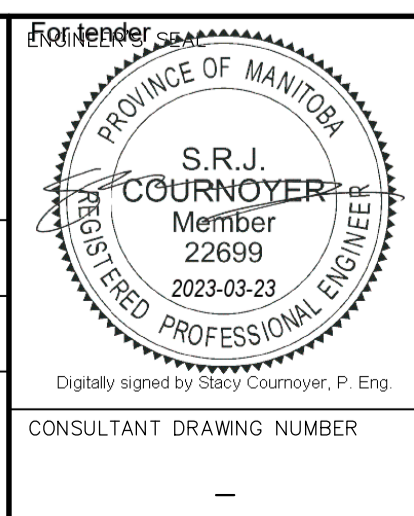
**WARNING**  
IF POWER EQUIPMENT OR EXPLOSIVES ARE TO BE USED FOR EXCAVATION ON THIS PROJECT THE CONTRACTOR MUST:  
1) NOTIFY THE GAS COMPANY OF THE PROPOSED LOCATION OF EXCAVATION.  
2) TAKE PRECAUTION TO AVOID DAMAGE TO GAS COMPANY INSTALLATIONS.  
SEE PROVINCIAL REGULATION 21072 FOR DETAILS

**LOCATION APPROVED UNDERGROUND STRUCTURES**  
SUPV. U/G STRUCTURES COMMITTEE DATE  
NOTE:  
LOCATION OF UNDERGROUND STRUCTURES AS SHOWN ARE BASED ON THE BEST INFORMATION AVAILABLE BUT NO GUARANTEE IS GIVEN THAT ALL EXISTING UTILITIES ARE SHOWN OR THAT THE GIVEN LOCATIONS ARE EXACT. CONFIRMATION OF EXISTENCE AND EXACT LOCATION OF ALL UTILITIES MUST BE OBTAINED FROM THE INDIVIDUAL UTILITIES BEFORE PROCEEDING WITH CONSTRUCTION.

VERTICAL DATUM: CGVD28 (HT2.0 Geoid)  
HORIZONTAL DATUM: NAD83 (June 1990), Zone 14

NO.	REVISIONS	DATE	BY

DESIGNED BY	JB	CHECKED BY	SC
DRAWN BY	AOM	APPROVED BY	KZ
SCALE:		RELEASED FOR CONSTRUCTION	
HORIZONTAL	1:250		
VERTICAL	1:50		
DATE	2023 03 22	DATE	



**THE CITY OF WINNIPEG**  
WATER AND WASTE DEPARTMENT  
ENGINEERING DIVISION

2023 WATER MAIN RENEWALS  
CONTRACT 5  
**CHIPPAWA BAY (E-LEG)**  
CHIPPAWA BAY (S-LEG) TO  
COMANCHE ROAD

SHEET 7 OF 14  
CITY DRAWING NUMBER  
D-16506