

|            |                         |       |       |            |
|------------|-------------------------|-------|-------|------------|
| 0          | ISSUED FOR CONSTRUCTION | IR    | BF    | 2023.12.19 |
| Issued     |                         | By    | Appd. | YY.MM.DD   |
| File Name: | 21015-101               | VF/IR | BC    | BF         |
|            |                         | Dwn.  | Chkd. | Dsgn.      |
|            |                         |       |       | 23.12.13   |
|            |                         |       |       | YY.MM.DD   |



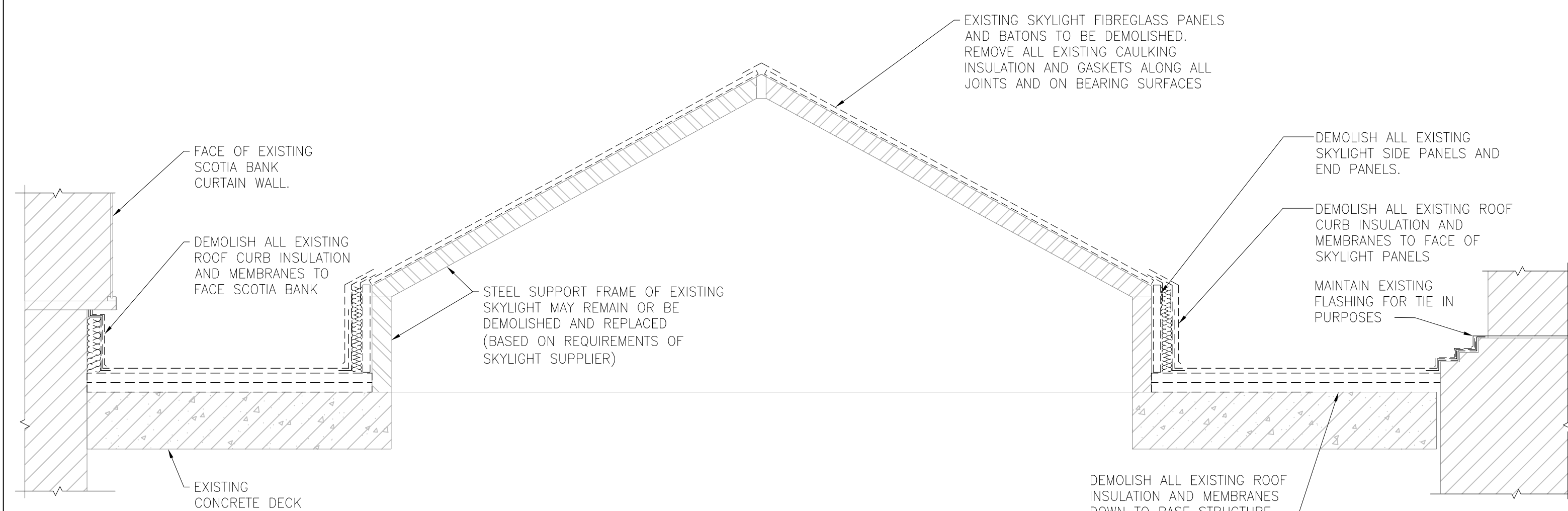
Winnipeg CITY OF WINNIPEG  
 SKYLIGHT AND ROOF REPLACEMENT  
 AT 210 PORTAGE AVENUE  
 Winnipeg, Manitoba

Title  
 SKYLIGHT REPAIRS  
 DEMOLITION ROOF PLAN

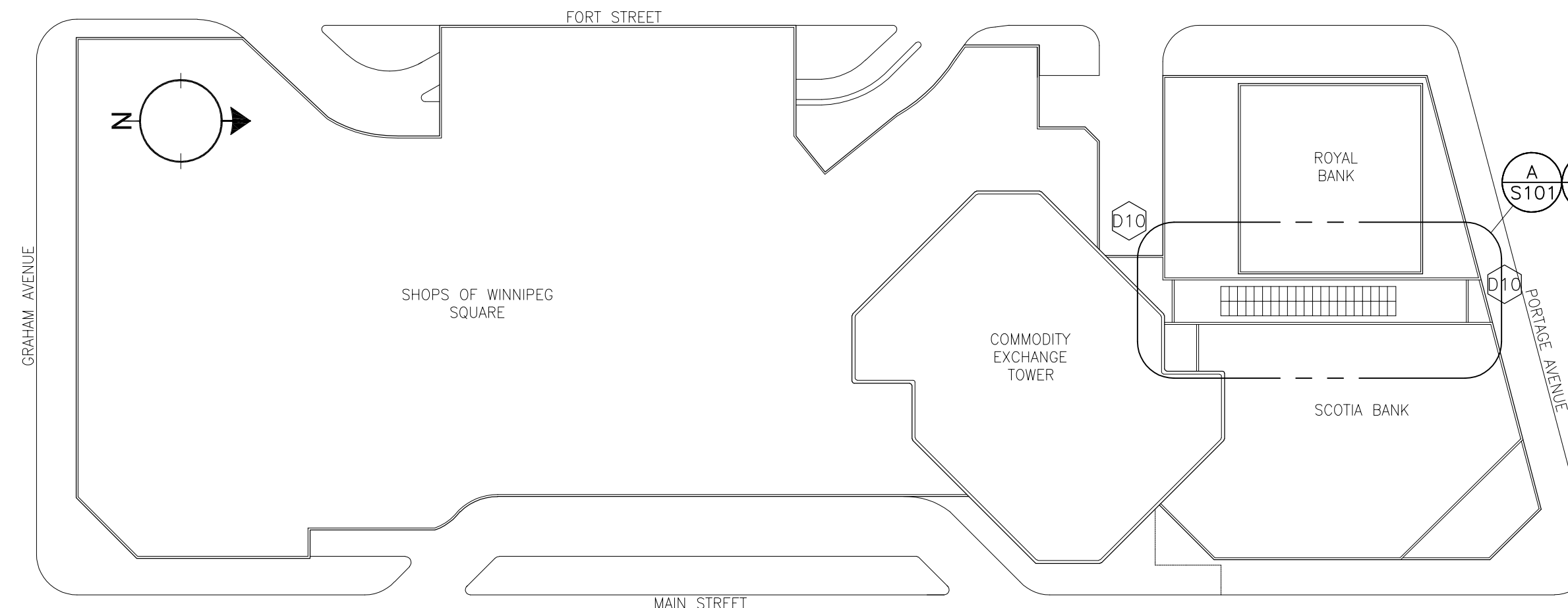
Project No. 115421015 Scale AS NOTED

Drawing No. Sheet of Revision

S-101 of 0

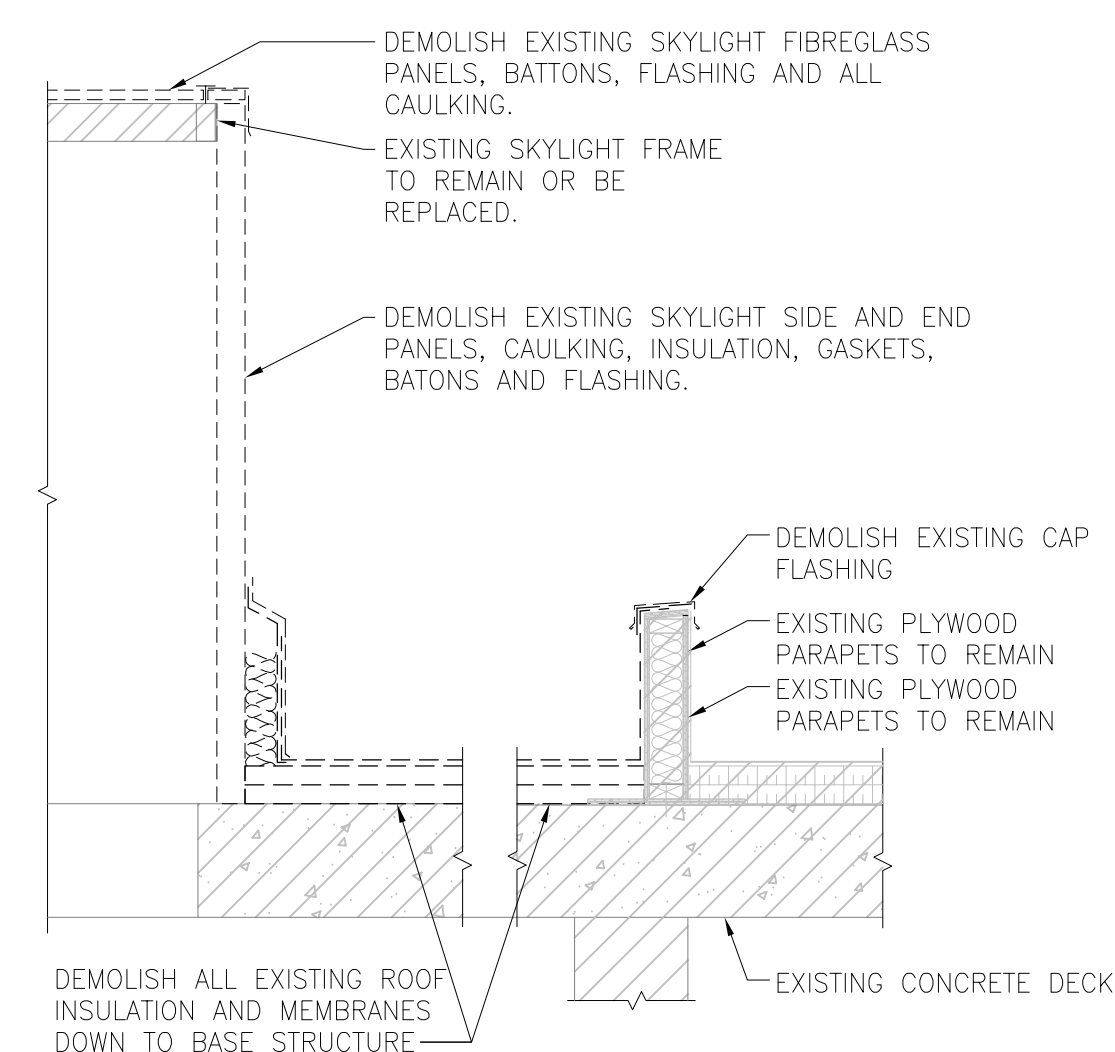


1 ROOF DEMOLITION  
 S101 SCALE: 1:20

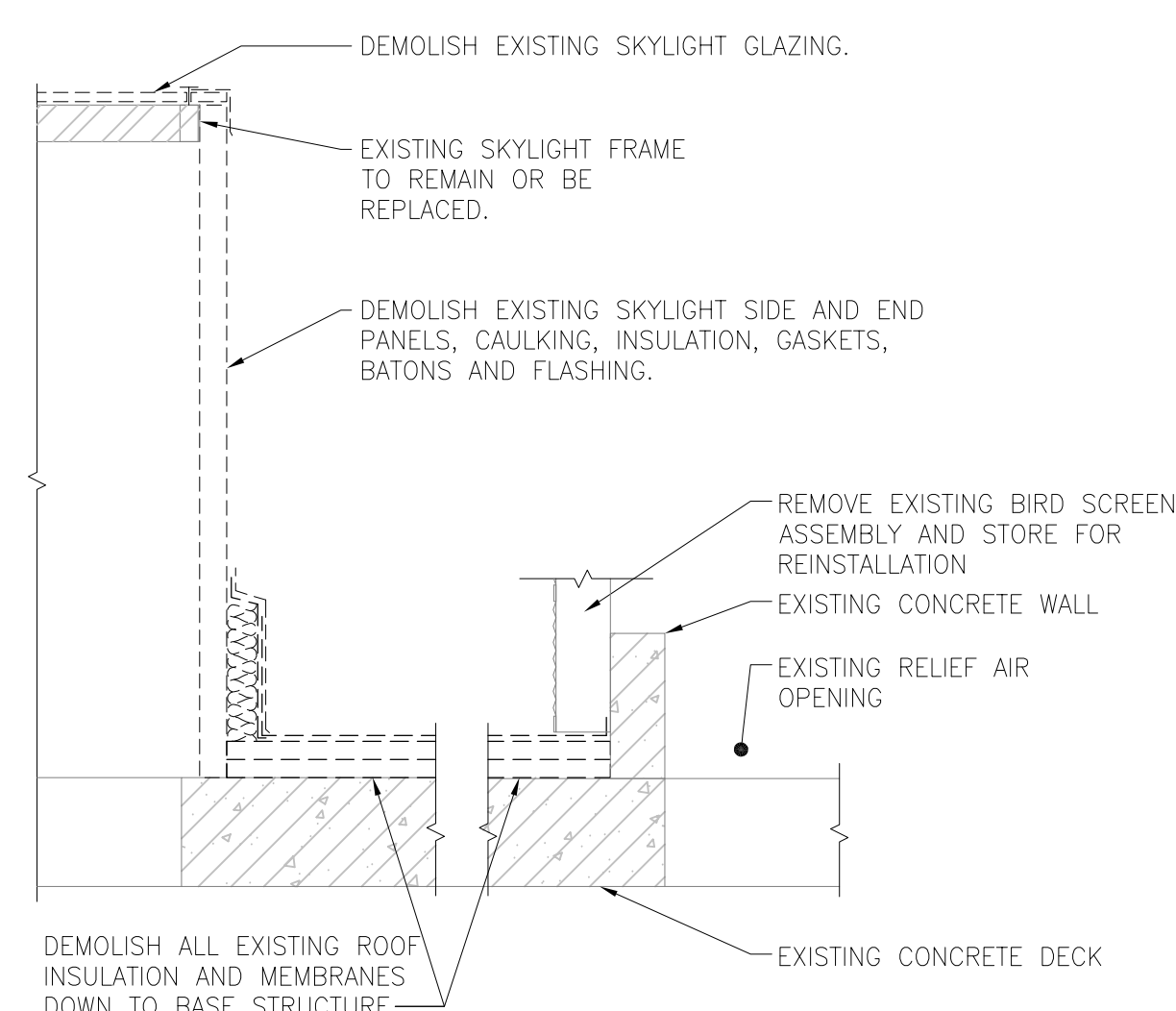


KEY PLAN  
 N.T.S.

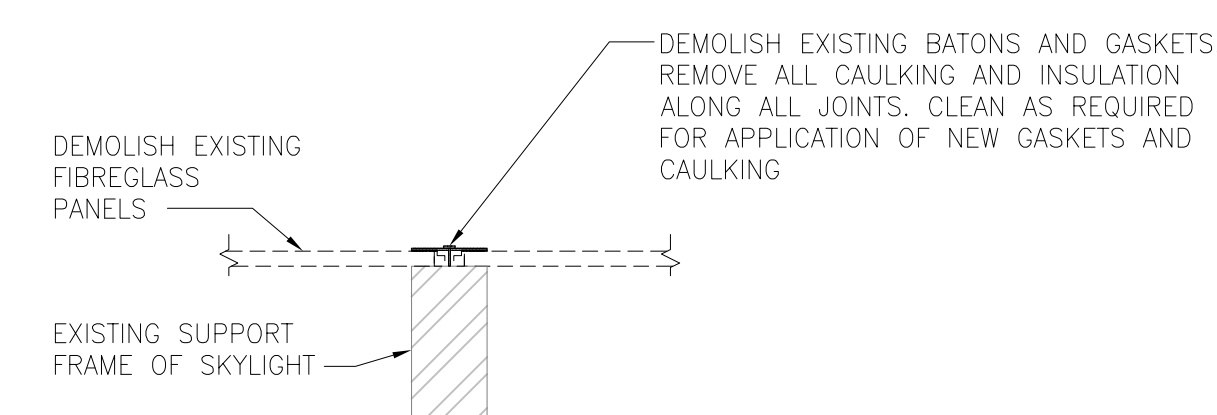
EXISTING ROOFING AND SKYLIGHT LINES ARE DIAGRAMMATIC AND ALL DETAILS MUST BE SITE CONFIRMED.



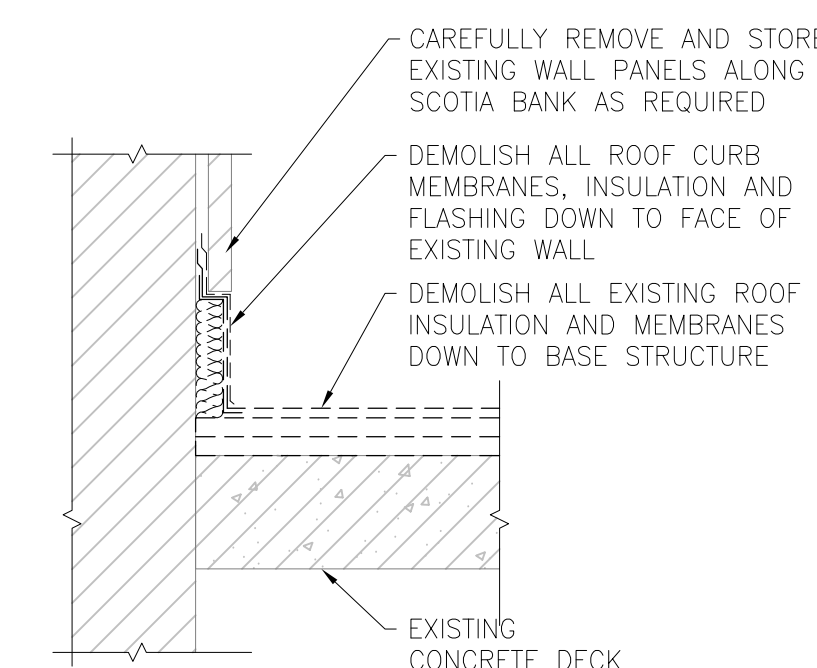
2 ROOF DEMOLITION  
 S101 SCALE: 1:20



3 ROOF DEMOLITION  
 S101 SCALE: 1:20



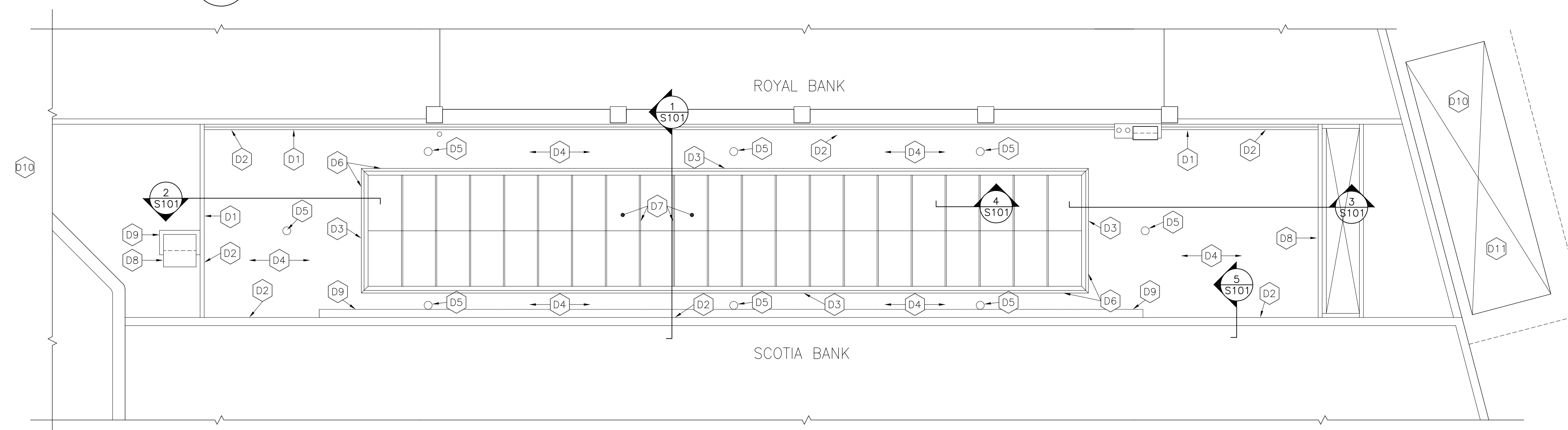
4 SKYLIGHT BATON DEMOLITION  
 S-101 SCALE: 1:5



5 ROOF DEMOLITION  
 S101 SCALE: 1:20

DEMOLITION KEY NOTES

- D1 EXISTING BULKHEAD TO REMAIN. DEMOLISH EXISTING CAP FLASHING.
- D2 STRIP AND REMOVE ROOF CURB ASSEMBLY TO FACE OF WOOD PARAPET.
- D3 STRIP AND REMOVE ROOF CURB ASSEMBLY AND SIDE PANELS OF SKYLIGHT.
- D4 STRIP AND REMOVE ROOFING ASSEMBLY DOWN TO CONCRETE DECK. INSPECT CONCRETE SURFACE FOR DELAMINATIONS OR CRACKING. REPAIR CRACKS AND DELAM'S PER DETAILS ON SHEET S-102
- D5 DEMOLISH ROOF DRAIN. PIPING TO BE INSPECTED AND TO REMAIN IF ACCEPTABLE. PROVIDE NEW ROOF DRAIN PER DRAWING S-102.
- D6 REMOVE ALL EXISTING FLASHING AROUND BASE OF SKYLIGHT
- D7 DEMOLISH ALL BATONS, GASKETS, CAULKING, INSULATION AND TRANSLUCENT FIBREGLASS PANES FROM EXISTING STEEL FRAME OF SKYLIGHT
- D8 EXISTING AIR RELIEF HOOD TO REMAIN. TEMPORARILY REMOVE BIRD SCREEN AND STORE FOR REINSTALLATION
- D9 EXISTING CURTAIN WALL ABOVE TO REMAIN
- D10 APPROXIMATE LOCATION OF ROOF ACCESS FOR PERSONNEL AND MATERIALS. CONTRACTOR TO UTILIZE SCAFFOLDING AS REQUIRED. COORDINATE ACCESS w/ CITY. REFER TO SPECIFICATIONS.
- D11 PROVIDE SECURE FENCING AT SIDEWALK LEVEL AS REQUIRED TO RESTRICT ACCESS TO BUILDING ROOF. CONTRACTOR TO ACQUIRE ANY REQUIRED PERMITS TO TEMPORARY SIDEWALK OBSTRUCTION.



A DEMOLITION PARTIAL ROOF PLAN  
 S-101 SCALE: 1:100