

NOTE: CHAINAGES SHOWN ARE ALONG W. R. OF (ISBISTER STREET)

ISBISTER STREET



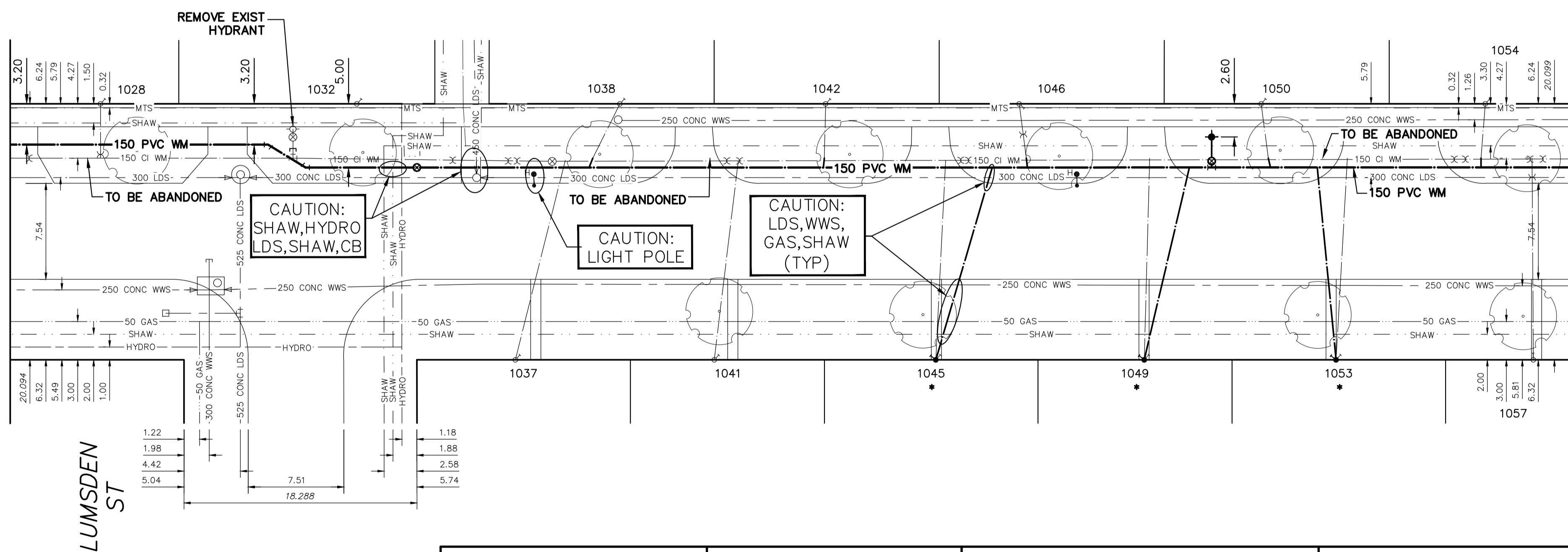
WATER SERVICE INFORMATION

ADDRESS	SIZE (mm) MATERIAL (STREET)	SIZE (mm) MATERIAL (PROP.)	SHORT & LONG MEASUREMENT	CORP LOCATION	REMARKS
1028 ISBISTER ST RESIDENTIAL	20 CU	20 CU	4.60 SNL BLDG	OPP OF S/C	RECONNECT SERVICE
1032 ISBISTER ST RESIDENTIAL	- CU	20 CU	6.550 SSL LUMSDEN AVE	-	RECONNECT SERVICE
1037 ISBISTER ST RESIDENTIAL	20 CU	20 CU	11.60 NSL BLDG	-	RECONNECT SERVICE
1038 ISBISTER ST RESIDENTIAL	20 CU	20 CU	13.580 NSL LUMSDEN AVE	3.9 N OF S/C	RECONNECT SERVICE
1041 ISBISTER ST RESIDENTIAL	20 CU	20 CU	4.37 NSL BLDG	2.1 N OF S/C	RECONNECT SERVICE
1042 ISBISTER ST RESIDENTIAL	20 CU	20 CU	7.730 NNL LUMSDEN AVE	1.9 N OF S/C	RECONNECT SERVICE
1044 ISBISTER ST RESIDENTIAL	20 CU	20 CU	9.28 NSL BLDG	0.1 S OF S/C	RECONNECT SERVICE
1045 ISBISTER ST RESIDENTIAL	20 CU	20 CU	15.940 NNL LUMSDEN AVE	0.8 N OF S/C	RECONNECT SERVICE
1046 ISBISTER ST RESIDENTIAL	20 CU	20 CU	23.350 NNL LUMSDEN AVE	0.6 N OF S/C	RECONNECT SERVICE
1049 ISBISTER ST RESIDENTIAL	20 CU	20 CU	7.08 NSL BLDG	0.4 N OF S/C	RECONNECT SERVICE
1050 ISBISTER ST RESIDENTIAL	20 CU	20 CU	32.100 NNL LUMSDEN AVE	0.6 N OF S/C	RECONNECT SERVICE
1053 ISBISTER ST RESIDENTIAL	20 CU	20 CU	5.97 SNL BLDG	0.6 N OF S/C	RECONNECT SERVICE
1054 ISBISTER ST RESIDENTIAL	20 CU	20 CU	40.750 NNL LUMSDEN AVE	0.3 S OF S/C	RECONNECT SERVICE
1057 ISBISTER ST RESIDENTIAL	20 CU	20 CU	9.02 SNL BLDG	0.7 S OF S/C	RECONNECT SERVICE
1058 ISBISTER ST RESIDENTIAL	20 CU	20 CU	66.290 NNL LUMSDEN AVE	0.7 S OF S/C	RECONNECT SERVICE
1061 ISBISTER ST RESIDENTIAL	20 CU	20 CU	87.670 NNL LUMSDEN AVE	1.5 N OF S/C	RECONNECT SERVICE
1062 ISBISTER ST RESIDENTIAL	20 CU	20 CU	7.38 SNL BLDG	0.9 N OF S/C	RECONNECT SERVICE
1065 ISBISTER ST RESIDENTIAL	20 CU	20 CU	82.000 SSL RISEBEY CR	4.5 S OF S/C	RECONNECT SERVICE
1066 ISBISTER ST RESIDENTIAL	20 CU	20 CU	87.310 SSL RISEBEY CR	0.2 S OF S/C	RECONNECT SERVICE
1069 ISBISTER ST RESIDENTIAL	20 CU	20 CU	10.03 NSL BLDG	0.2 S OF S/C	RECONNECT SERVICE
1070 ISBISTER ST RESIDENTIAL	20 CU	20 CU	62.250 SSL RISEBEY CR	1.5 S OF S/C	RECONNECT SERVICE
1073 ISBISTER ST RESIDENTIAL	20 CU	20 CU	71.540 SSL RISEBEY CR	0.7 N OF S/C	RECONNECT SERVICE
1074 ISBISTER ST RESIDENTIAL	20 CU	20 CU	5.08 NSL BLDG	0.7 N OF S/C	RECONNECT SERVICE
1077 ISBISTER ST RESIDENTIAL	20 CU	20 CU	29.960 SSL RISEBEY CR	0.7 N OF S/C	RECONNECT SERVICE
1078 ISBISTER ST RESIDENTIAL	20 CU	20 CU	2.65 NSL BLDG	1.1 S OF S/C	RECONNECT SERVICE
1081 ISBISTER ST RESIDENTIAL	20 CU	20 CU	42.950 SSL RISEBEY CR	1.2 N OF S/C	RECONNECT SERVICE
1085 ISBISTER ST RESIDENTIAL	20 CU	20 CU	9.420 SSL RISEBEY CR	0.6 N OF S/C	RECONNECT SERVICE
271 RISEBEY CR RESIDENTIAL	20 CU	20 CU	8.150 SSL RISEBEY CR	1.4 E OF S/C	RECONNECT SERVICE
279 RISEBEY CR RESIDENTIAL	20 CU	20 CU	6.74 EWL BLDG	0.2 E OF S/C	RECONNECT SERVICE
	20 CU	20 CU	10.230 EEL ISBISTER ST	-	-
	20 CU	20 CU	5.55 WEL BLDG	-	-
	20 CU	20 CU	7.860 WML ISBISTER ST	-	-

* SERVICES TO BE RENEWED TO R. ALL OTHERS TO BE RECONNECTED

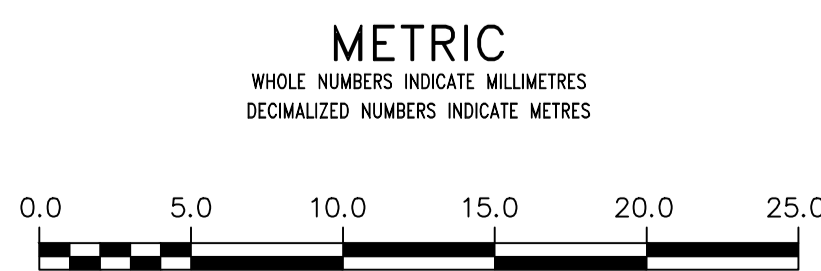
MATCHLINE 5+22.50
SEE DWG D-16447

MATCHLINE 6+45.00
SEE DWG D-16449



FOR INDEX SEE D-16440

NOTE: ALL VALVES TO BE INSTALLED CLOCKWISE TO CLOSE

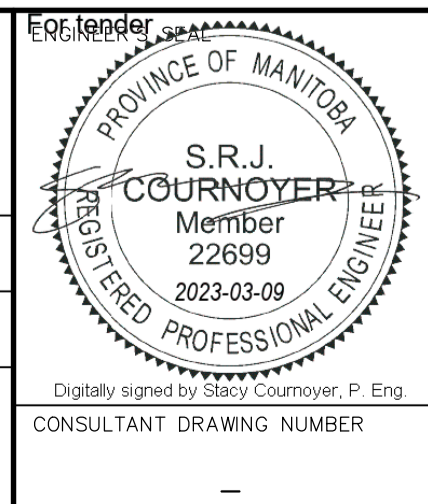


WARNING
IF POWER EQUIPMENT OR EXPLOSIVES ARE TO BE USED FOR EXCAVATION ON THIS PROJECT THE CONTRACTOR MUST:
1) NOTIFY THE GAS COMPANY OF THE PROPOSED LOCATION OF EXCAVATION.
2) TAKE PRECAUTION TO AVOID DAMAGE TO GAS COMPANY INSTALLATIONS.
SEE PROVINCIAL REGULATION 210/72 FOR DETAILS

LOCATION APPROVED
UNDERGROUND STRUCTURES
SUPV. U/G STRUCTURES COMMITTEE DATE
NOTE:
LOCATION OF UNDERGROUND STRUCTURES AS SHOWN ARE BASED ON THE BEST INFORMATION AVAILABLE BUT NO GUARANTEE IS GIVEN THAT ALL EXISTING UTILITIES ARE SHOWN OR THAT THE GIVEN LOCATIONS ARE EXACT. CONFIRMATION OF EXISTENCE AND EXACT LOCATION OF ALL SERVICES MUST BE OBTAINED FROM THE INDIVIDUAL UTILITIES BEFORE PROCEEDING WITH CONSTRUCTION.

VERTICAL DATUM: CGVD28 (HT2.0 Geoid)			
HORIZONTAL DATUM: NAD83 (June 1990), Zone 14			
NO.	REVISIONS	DATE	BY

DESIGNED BY	RG	CHECKED BY	SC
DRAWN BY	AJ	APPROVED BY	KZ
SCALE:		RELEASED FOR CONSTRUCTION	
HORIZONTAL	1:250		
VERTICAL	1:50		
DATE	2023 03 01	DATE	Mar 9, 2023
PLOT DATE:	2023 03 01		



THE CITY OF WINNIPEG
WATER AND WASTE DEPARTMENT
ENGINEERING DIVISION

2023 WATER MAIN RENEWALS
CONTRACT 12
ISBISTER STREET
13.5 S OF LUMSDEN AVENUE TO
90.5 N LUMSDEN AVENUE

SHEET 10 OF 13
CITY DRAWING NUMBER
D-16448