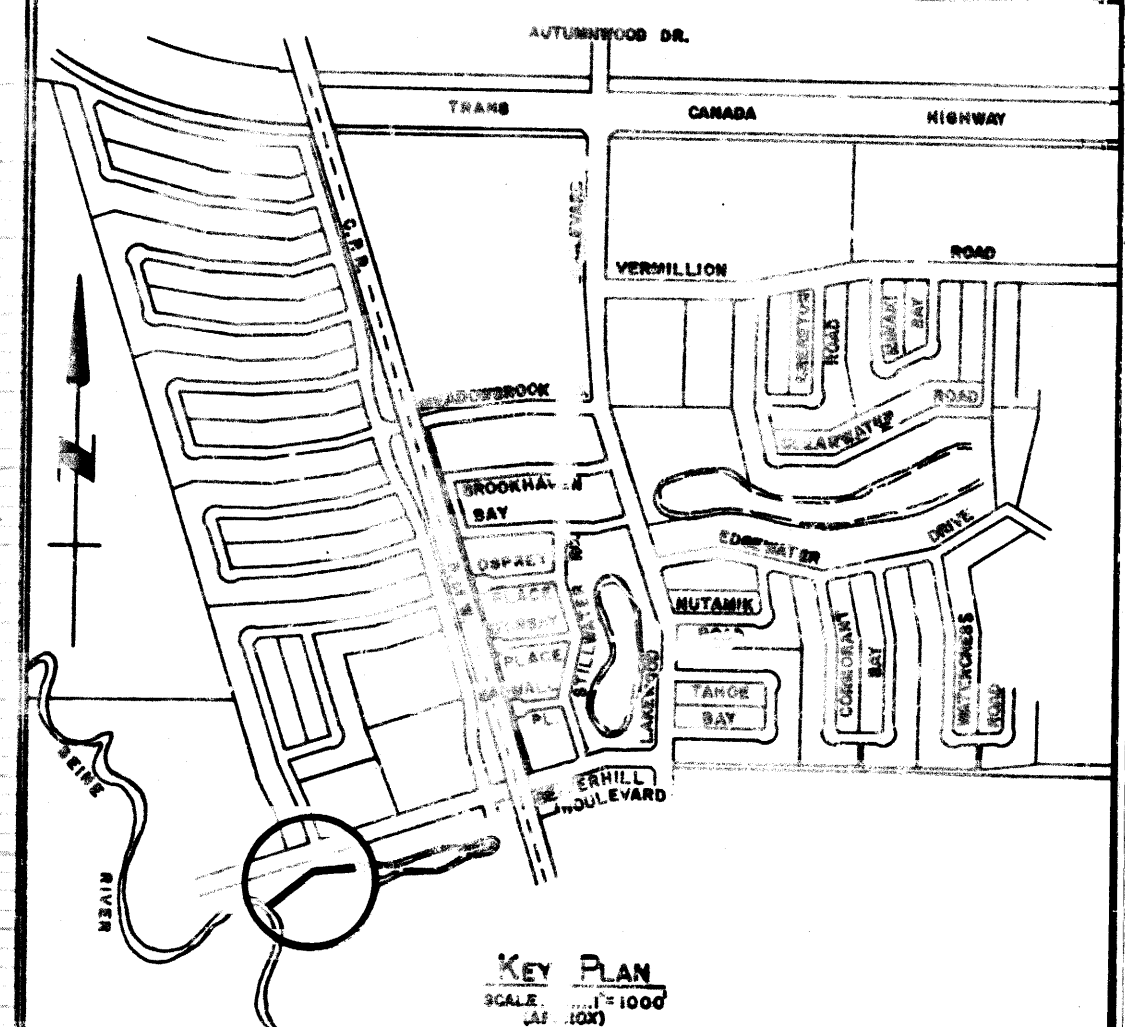
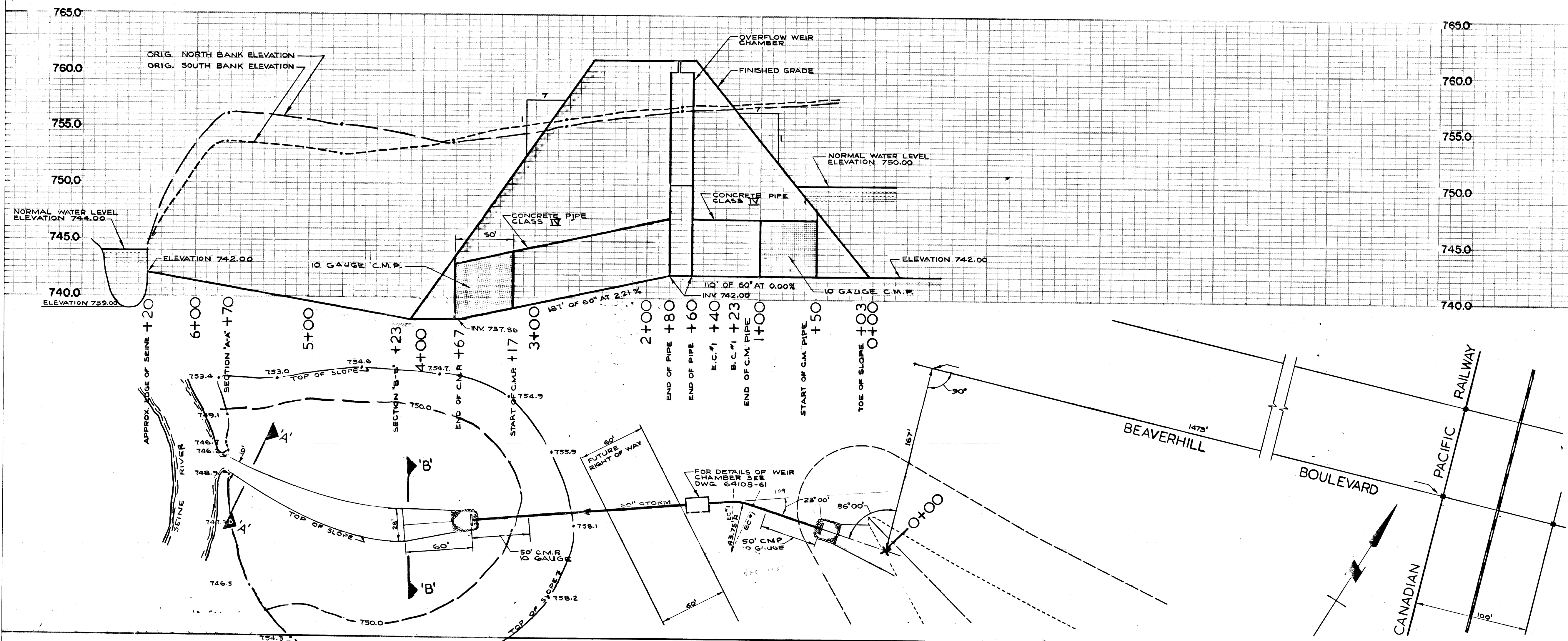
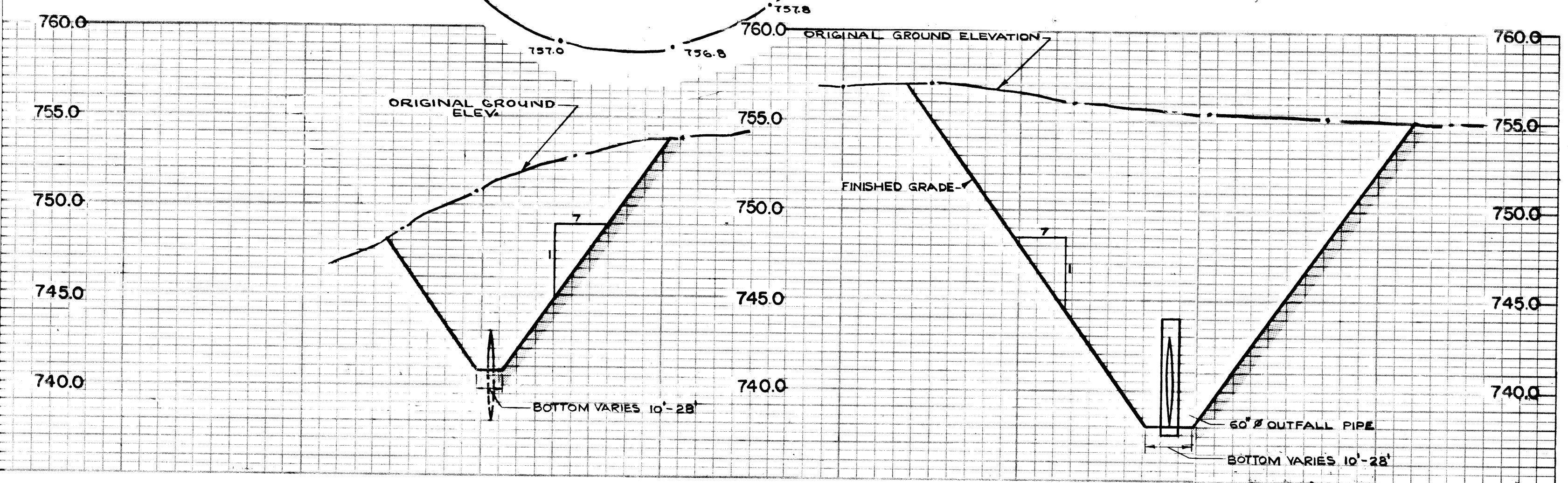


**APPENDIX A**  
**PUMP STATION AND CHAMBER RECORD DRAWINGS**



- NOTES:**
1. ALL C.M.P. OUTFALL PIPES BACKFILLED WITH COMPACTED CLAY.
  2. ALL CHAINAGE TO  $\frac{1}{2}$  OF PIPE.
  3. RUBBER GASKETS WERE USED ON ALL CONCRETE STORM SEWERS BELOW INVERT ELEVATION 750.00.
  4. RIP RAP WAS LEAN MIX CONCRETE (SAND PLUS THREE BAGS OF CEMENT PER CU. YD.) PLACED DRY IN BURLAP BAGS AND WATERED DOWN AFTER PLACEMENT.
  5. ALL C.M. PIPES WERE ASPHALT COATED ASBESTOS BONDED, DOUBLE DIPPED GALVANIZED STEEL PIPE.



**SECTION "A-A"**  
 HORIZ. - 1" = 50'  
 VERT. - 1" = 5'

**SECTION "B-B"**  
 HORIZ. - 1" = 50'  
 VERT. - 1" = 5'

AS - BUILT		
DATE	FB. NO.	PAGE
DEC/65	351	26

*F. M. Hewitt*  
 CITY OF ST. BONIFACE  
 CITY ENGINEER

PROVINCE OF MANITOBA  
 F. M. HEWITT  
 REGISTERED ENGINEER

NO.	DESCRIPTION	DATE	BY
REVISIONS			

**CITY OF ST. BONIFACE**

**W. L. WARDROP & ASSOCIATES LTD.**  
 ENGINEERING CONSULTANTS  
 WINNIPEG CANADA PORT ARTHUR

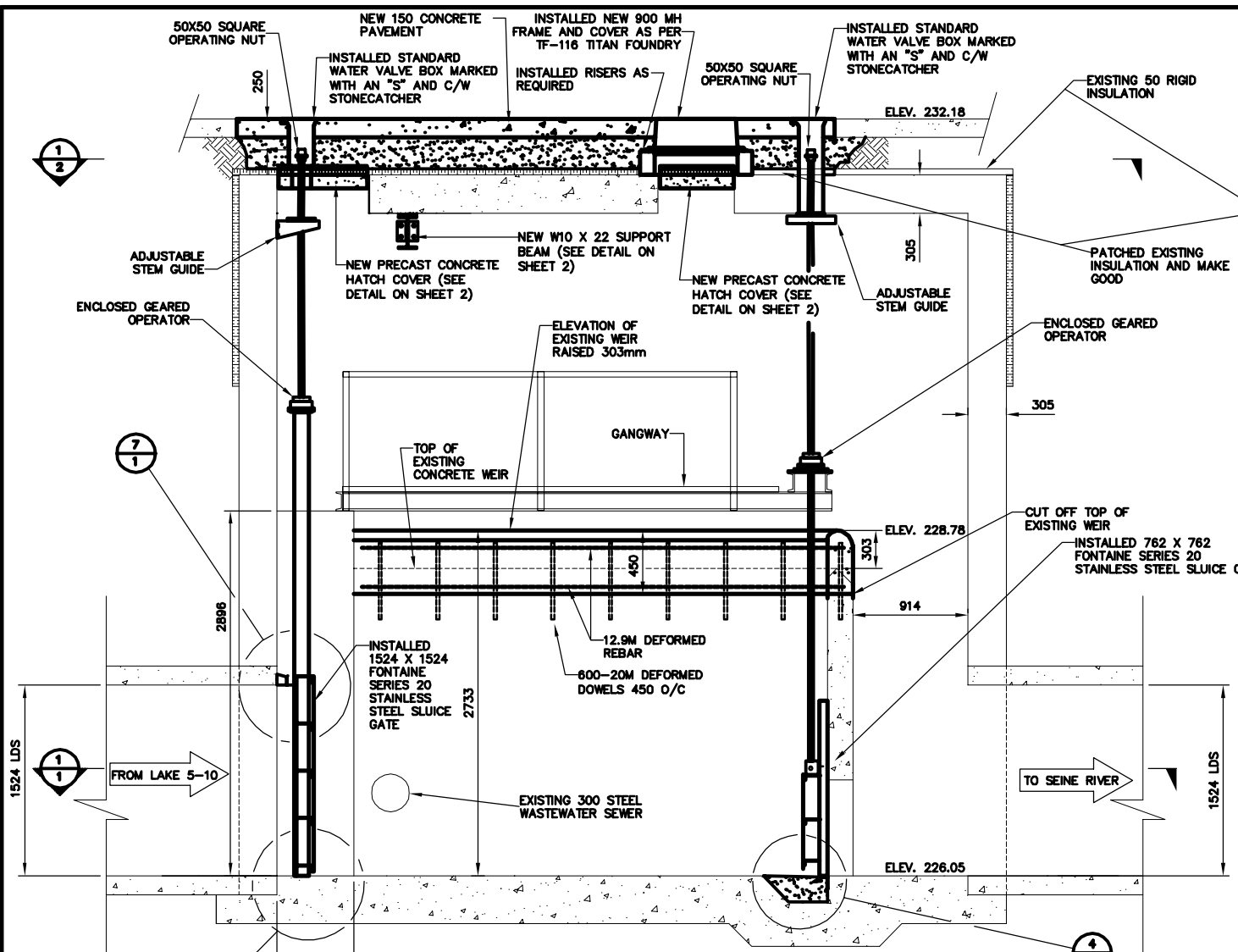
**STORM SEWER OUTFALL & DETAILS**  
**BETWEEN BEAVERHILL CREEK & SEINE RIVER**  
**LAKE 5-10**

SCALE: HORIZ. 1" = 50'  
 VERT. 1" = 5'

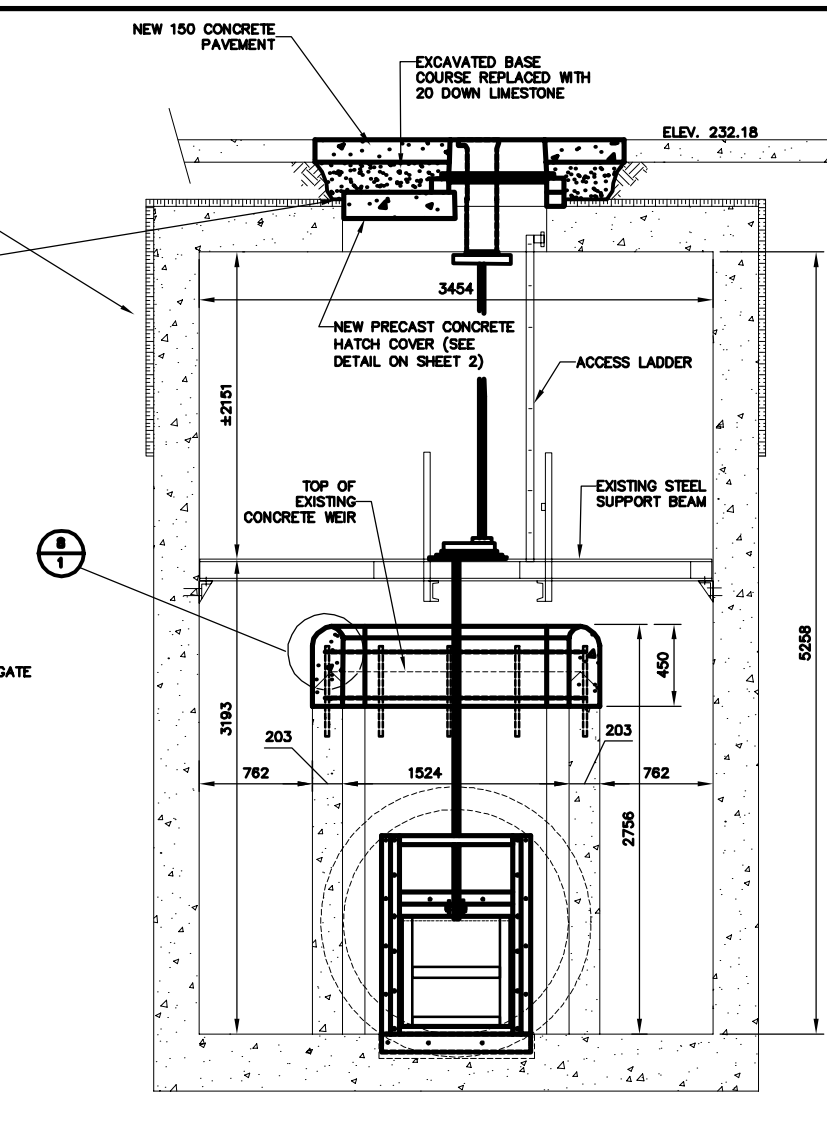
DESIGNED BY: F. M. H.  
 DRAWN BY: R. G. C.  
 CHECKED BY: *F. M. Hewitt*

APPROVED BY: *F. M. Hewitt*  
 DATE: MAY 1965  
 PROJECT NO. 64108  
 DRAWING NO. 64108-66

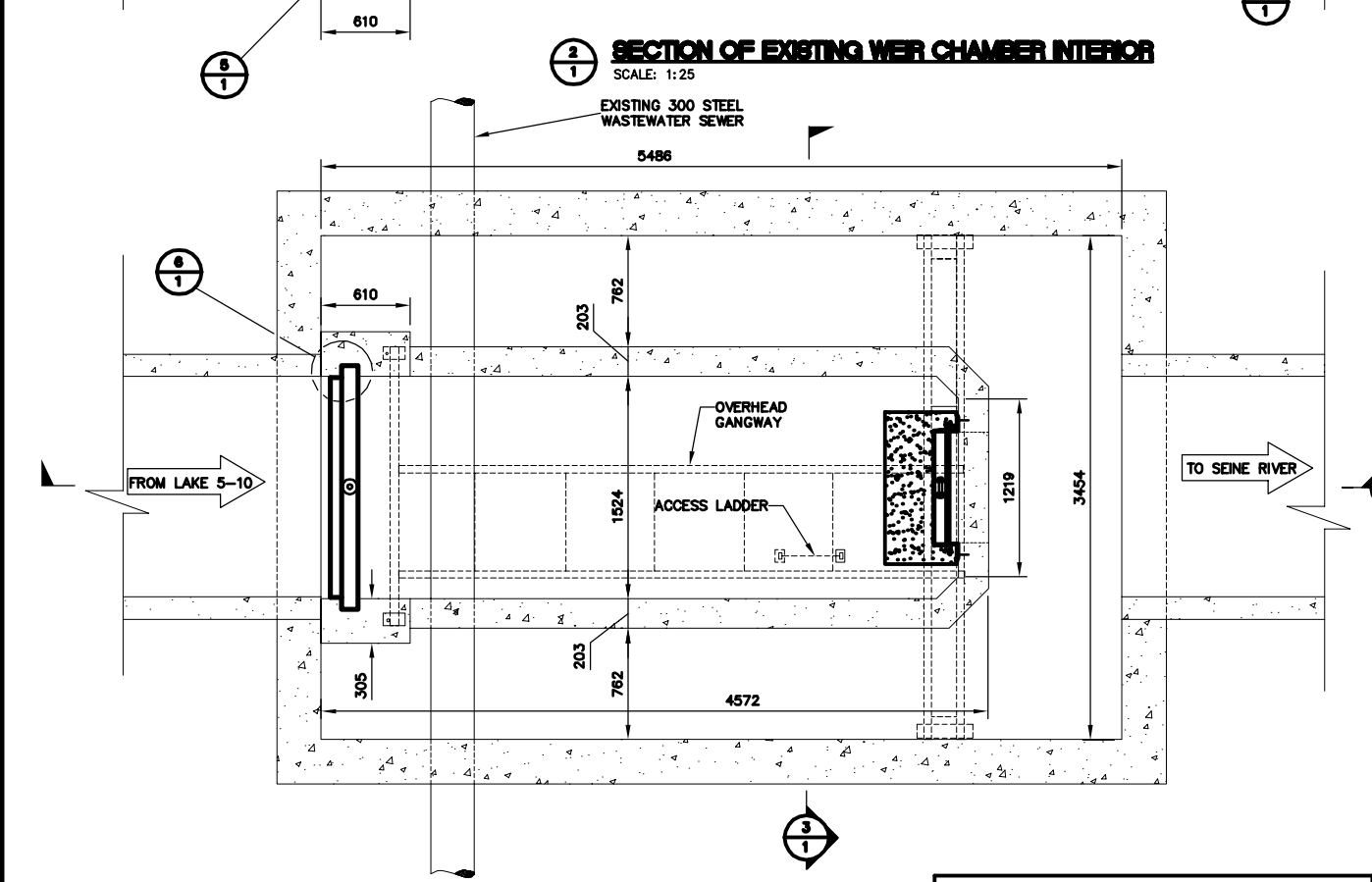
HF-00112



**SECTION OF EXISTING WEIR CHAMBER INTERIOR**  
SCALE: 1:25

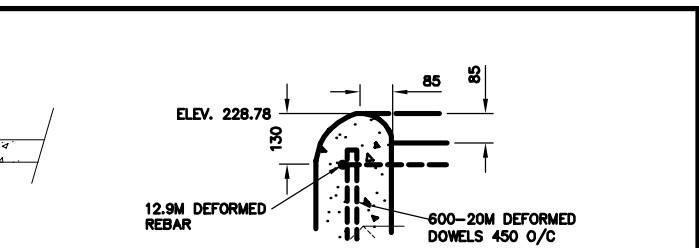


**SECTION - 762 X 762 SLUICE GATE**  
SCALE: 1:25

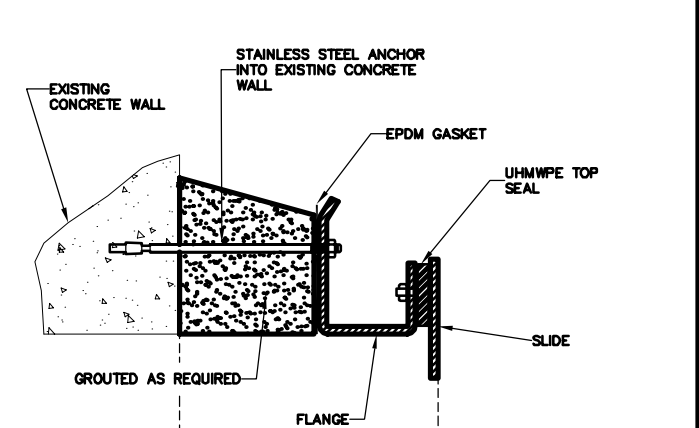


**PLAN OF EXISTING WEIR CHAMBER INTERIOR**  
SCALE: 1:25

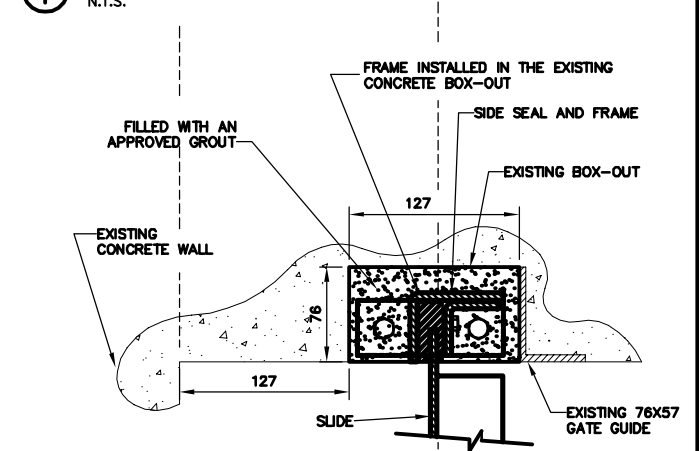
**RECORD DRAWING**  
WATER AND WASTE DEPARTMENT



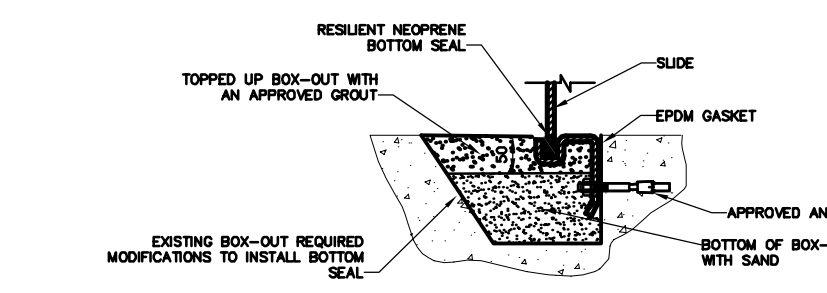
**DETAIL - TOP OF WEIR**  
N.T.S.



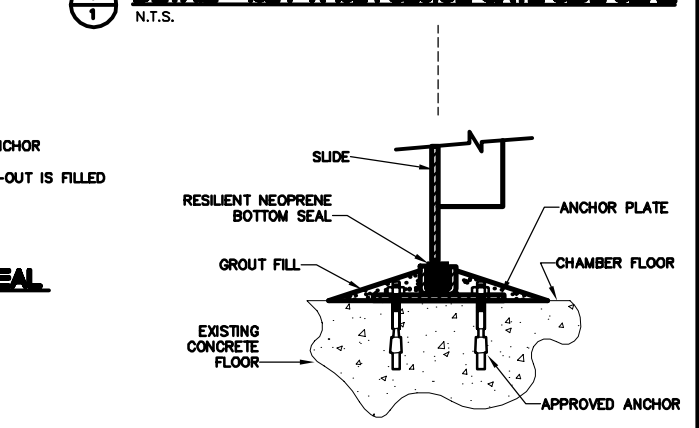
**DETAIL - 1524 X 1524 SLUICE GATE TOP SEAL**  
N.T.S.



**DETAIL - 1524 X 1524 SLUICE GATE SIDE SEAL**  
N.T.S.



**DETAIL - 762 X 762 SLUICE GATE BOTTOM SEAL**  
N.T.S.



**DETAIL - 1524 BOTTOM SEAL**  
N.T.S.

METRIC  
WHOLE NUMBERS INDICATE MILLIMETRES  
DECIMALIZED NUMBERS INDICATE METRES

CONTRACTOR: GATEWAY CONSTRUCTION  
PROJECT COMPLETION DATE: 2002 03 08

B.M. ELEV.	FIELD BOOK #:	CITY OF WINNIPEG WATER AND WASTE ENGINEERING DIVISION		ENGINEER'S SEAL
POSTED TO LIS		DESIGNED BY: NC	CHECKED BY: TW	ORIGINAL MYLAR SIGNED BY K.R. ZUREK 07/01/15
		DRAWN BY: NC	APPROVED BY:	
2. REVISED TO RECORD DRAWING	07/01/03	CJH	HOR. SCALE: AS NOTED	LAKE 5-10 WEIR CHAMBER UPGRADING <b>PLAN, SECTIONS AND PROFILE</b>
1. 762 GATE AND MH MODIFICATIONS	12/01	NC	VERTICAL	
NO. REVISIONS	DATE	BY	DATE	RELEASED FOR CONSTRUCTION
			NOV. 8, 2001	DATE

THE CITY OF WINNIPEG  
WATER AND WASTE DEPARTMENT

LAKE 5-10 WEIR CHAMBER UPGRADING  
**PLAN, SECTIONS AND PROFILE**

SHEET 1 OF 2  
CITY DRAWING NUMBER  
LD-2411

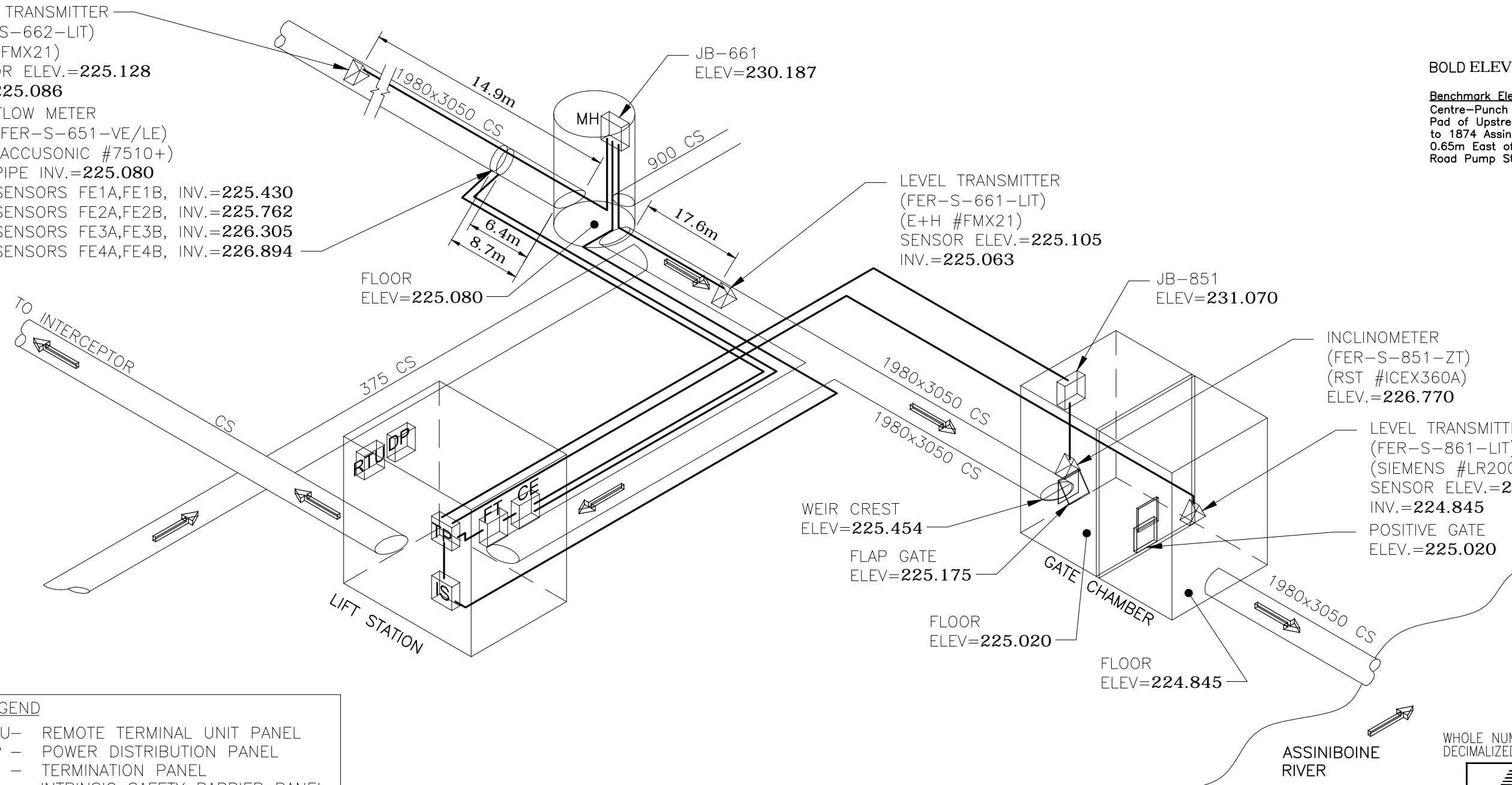
PLOT DATE: 2007 01 08



LEVEL TRANSMITTER  
(FER-S-662-LIT)  
(E+H#FMX21)  
SENSOR ELEV.=225.128  
INV.=225.086

FLOW METER  
(FER-S-651-VE/LE)  
(ACCUSONIC #7510+)  
PIPE INV.=225.080  
SENSORS FE1A,FE1B, INV.=225.430  
SENSORS FE2A,FE2B, INV.=225.762  
SENSORS FE3A,FE3B, INV.=226.305  
SENSORS FE4A,FE4B, INV.=226.894

BOLD ELEVATIONS FROM STANTEC  
Benchmark Elevation = 231.505  
Centre-Punch w/cross-hairs on SW Concrete Pad of Upstream Gate Chamber - Adjacent to 1874 Assiniboine Av - 9.95m North & 0.65m East of Projected NW Corner of Ferry Road Pump Station



**LEGEND**

- RTU- REMOTE TERMINAL UNIT PANEL
- DP - POWER DISTRIBUTION PANEL
- TP - TERMINATION PANEL
- IS - INTRINSIC SAFETY BARRIER PANEL
- JB - JUNCTION BOX
- INSTRUMENTATION CABLE
- FT - FLOW METER TRANSMITTER
- - FLOW METER SENSOR
- ▽ - LEVEL TRANSMITTER, INCLINOMETER

**METRIC**  
WHOLE NUMBERS INDICATE MILLIMETRES  
DECIMALIZED NUMBERS INDICATE METRES

Certificate of Authorization  
Stantec Consulting Ltd.  
No. 1301

CONSTRUCTION COMPLETION DATE - FEBRUARY 2013

**LOCATION APPROVED UNDERGROUND STRUCTURES**

SUPV. U/G STRUCTURES COMMITTEE	DATE

**NOTE:**  
LOCATION OF UNDERGROUND STRUCTURES AS SHOWN ARE BASED ON THE BEST INFORMATION AVAILABLE BUT NO GUARANTEE IS GIVEN THAT ALL EXISTING UTILITIES ARE SHOWN OR THAT THE GIVEN LOCATIONS ARE EXACT. CONFIRMATION OF EXISTENCE AND EXACT LOCATION OF ALL SERVICES MUST BE OBTAINED FROM THE INDIVIDUAL UTILITIES BEFORE PROCEEDING WITH CONSTRUCTION.

B.M. ELEV.	NO.	REVISIONS	DATE	BY
	E	REVISED AS-BUILT DRAWING	13.07.24	S.T.
	D	AS-BUILT DRAWING	13.05.31	S.T.
	C	ISSUED FOR CLIENT REVIEW	13.04.15	J.C.
	B	ISSUED FOR CLIENT REVIEW	13.03.21	J.C.
	A	ISSUED FOR CLIENT REVIEW	12.07.13	J.C.

500-311 Portage Avenue, Winnipeg, Manitoba  
Tel 204-489-5900 Fax 204-453-9012

DESIGNED BY	S.T.	CHECKED BY	J.C.
DRAWN BY	B.W.	APPROVED BY	J.C.
HOR. SCALE:	N.T.S.	RELEASED FOR CONSTRUCTION:	
VERTICAL:		DATE	2012.06.06

ENGINEER'S SEAL

CONSULTANT DRAWING NO.  
**E-1801**

**THE CITY OF WINNIPEG**  
WATER AND WASTE DEPARTMENT

**CSO OUTFALL MONITORING**  
FERRY ROAD  
3D ISOMETRIC PLAN

SHEET	OF
1	2
CAD FILE DRAWING NUMBER I3650e-1801-fer.dwg	
CITY DRAWING NUMBER <b>I-0141-A-A0202-001-00</b>	

V:\1112\active\111213650\_0300\_drawing\305\_record\sheet\_files\electrical\Ferry Road\13650e-1801-fer.dwg 2015/08/18 11:22 AM By: Bekker, Kyle