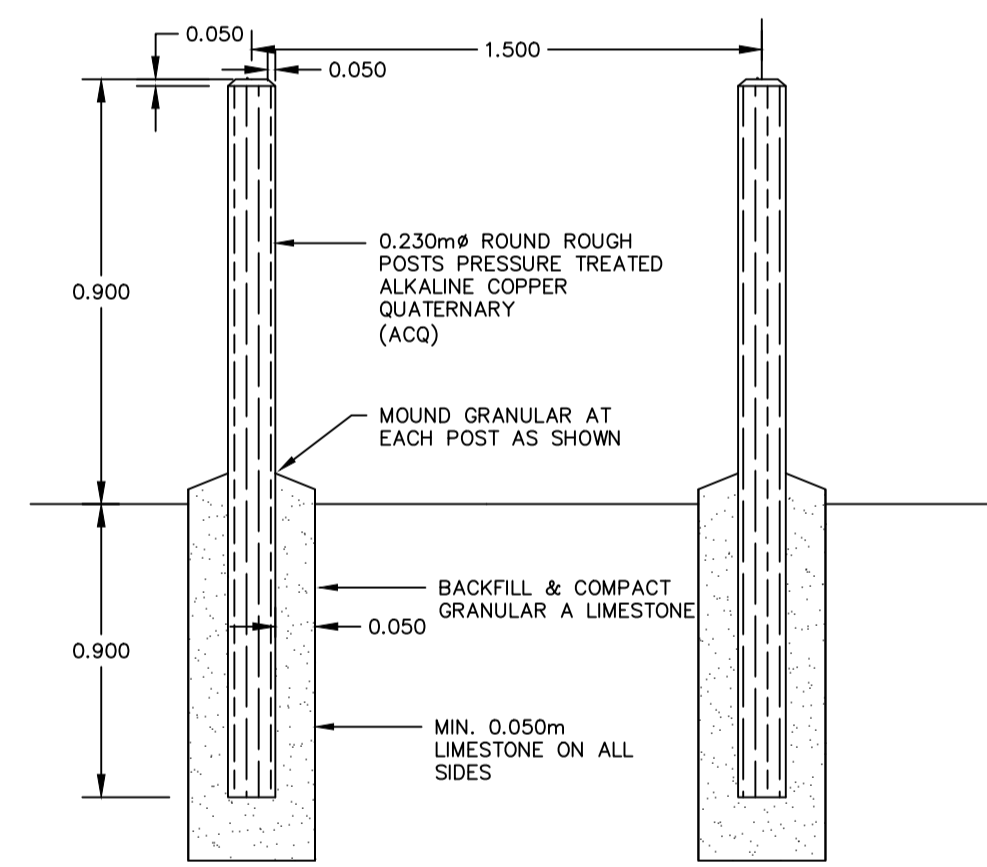
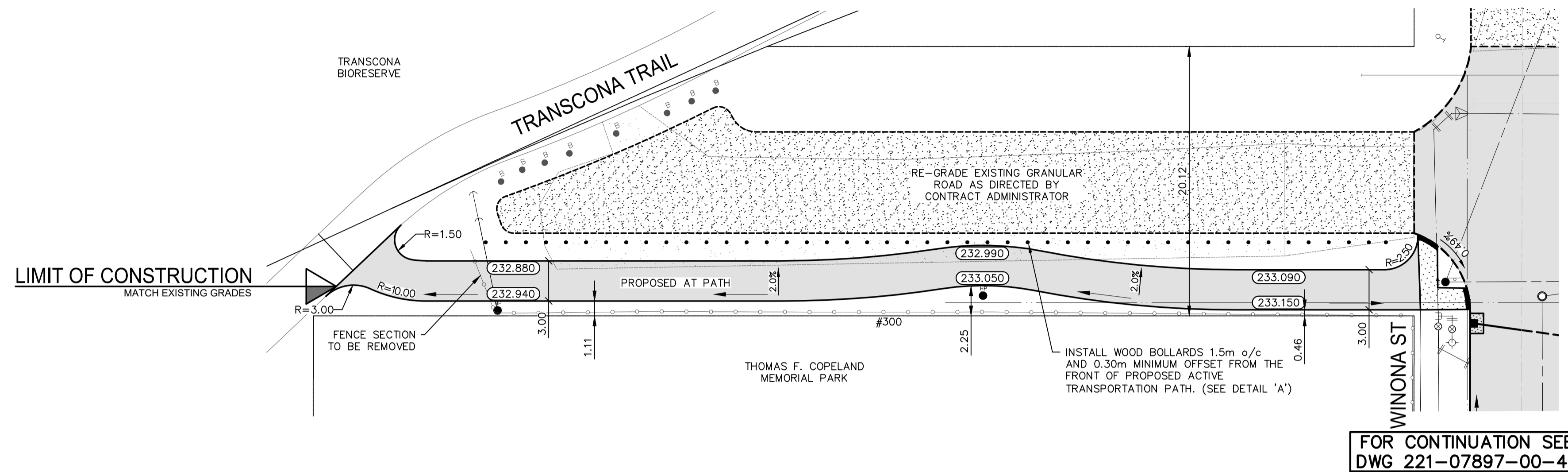
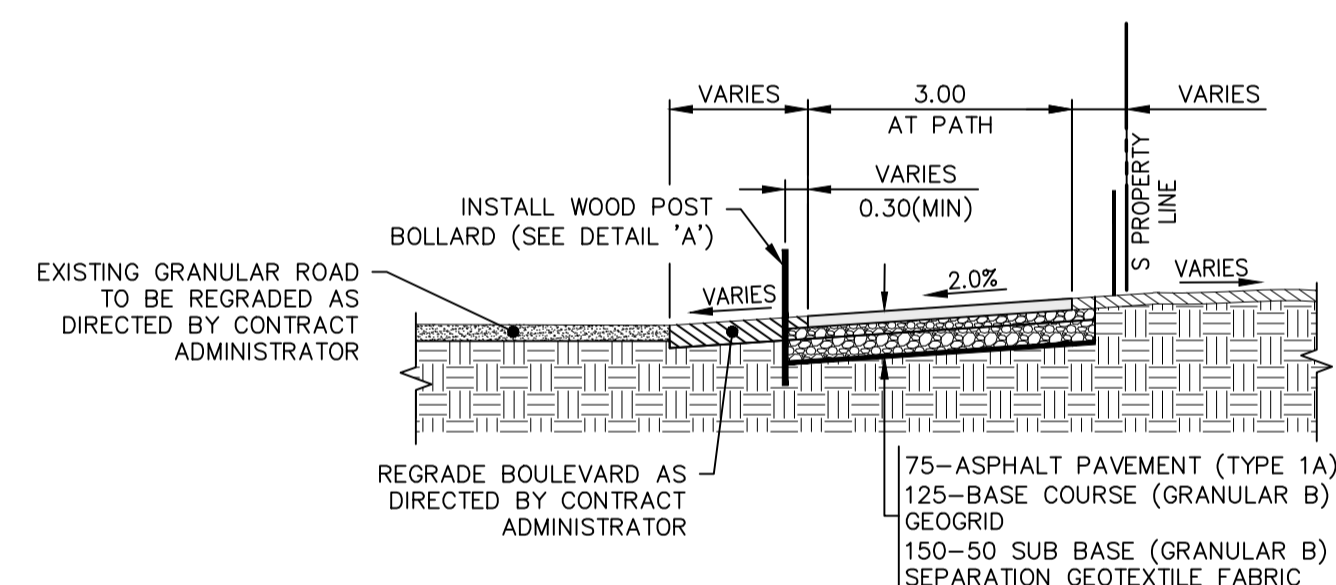


LARCHE AVENUE WEST



NOTE:  
 - ALL POSTS THOROUGHLY TAMPED AND GRANULAR MOUNDED AT EACH POST FOR FUTURE SETTLING AND DRAINAGE AWAY FROM POST. SURPLUS EARTH TO BE LEGALLY DISPOSED OF.  
 - FENCE POSTS ARE TO FOLLOW THE NATURAL CONTOUR OF THE LAND EXCEPT FOR SMALL UNDULATIONS WHICH WOULD TEND TO REDUCE THE AESTHETIC APPEARANCE OF THE FINISHED PROJECT.  
 - FENCE POSTS ARE TO BE INSTALLED 0.30m FROM THE FRONT OF THE AT PATH

DETAIL A  
 POST BOLLARD  
 SCALE: NTS



TYPICAL ACTIVE PATH SECTION  
 NTS

- NOTES:
1. ALL WORK AND MATERIALS TO BE IN ACCORDANCE WITH THE LATEST REVISION OF THE CITY OF WINNIPEG STANDARD CONSTRUCTION SPECIFICATIONS.
  2. CONTRACTOR TO CONFIRM THE LOCATION OF ALL UTILITIES/SERVICES IN THE FIELD PRIOR TO CONSTRUCTION.
  3. ALL ROADWAY DIMENSIONS SHOWN ARE TO BACK OF CURB.
  4. EXISTING ASPHALT TO BE PLANED AS SHOWN OR AS DIRECTED BY CONTRACT ADMINISTRATOR
  5. 150mm PARTIAL CONCRETE SLAB PATCHES SHOWN ARE ONLY A REPRESENTATIVE APPROXIMATION OF THE TENDERED QUANTITIES.
  6. EXISTING SIDEWALK TO BE RENEWED AS PER SD-228A AND AS DIRECTED BY CONTRACT ADMINISTRATOR.
  7. PLANE/REMOVE EXISTING CURB AND CONSTRUCT BARRIER CURB (100mm REVEAL) AS PER SD-206A AND AS DIRECTED BY CONTRACT ADMINISTRATOR.
  8. ALL PRIVATE WALKWAYS TO BE ADJUSTED TO NEW SIDEWALK OR TOP OF CURB ELEVATION, AS DIRECTED BY THE CONTRACT ADMINISTRATOR.
  9. EXISTING LIP CURB AT PRIVATE APPROACHES TO BE RENEWED AS DIRECTED BY CONTRACT ADMINISTRATOR.
  10. PAVEMENT REPAIR FABRIC TO BE INSTALLED AS SHOWN OR AS DIRECTED BY CONTRACT ADMINISTRATOR.
  11. MODIFIED BARRIER CURB TO BE CONSTRUCTED AT ALL INTERSECTION RADII AND ALLEY RADII
  12. CONTRACTORS TO TAKE PRECAUTIONARY STEPS TO PROTECT EXISTING TREES WITHIN THE LIMITS OF CONSTRUCTION FROM DAMAGE FROM CONSTRUCTION ACTIVITIES AS OUTLINED IN THE SPECIFICATIONS.
  13. LAMP STANDARDS, HYDRO POLES, AND ANCHORS THAT REQUIRE TEMPORARY SUPPORT, REMOVAL OR REPLACEMENT, TO BE DONE SO AT THE EXPENSE OF THE CONTRACTOR AS NECESSARY.
  14. ALL BOULEVARDS TO BE SODDED UNLESS OTHERWISE NOTED.
  15. ADJUST ALL WATER VALVES, HYDRANTS, MANHOLES, AND CATCH BASINS IN WORK AREA TO GRADE.

| EXISTING | LEGEND-PLAN         | PROPOSED  | EXISTING | LEGEND-PLAN                      | PROPOSED | EXISTING | LEGEND-PROFILE         | PROPOSED |
|----------|---------------------|-----------|----------|----------------------------------|----------|----------|------------------------|----------|
| ---      | WATER MAIN          | ---       | ---      | ANCHOR                           | ---      | ---      |                        |          |
| ---      | LAND DRAINAGE SEWER | ---       | ---      | HYDRO POLE & LIGHT STANDARD      | ---      | ---      |                        |          |
| ---      | WASTE WATER SEWER   | ---       | ---      | LIGHT STANDARD OR TRAFFIC SIGNAL | ---      | ---      |                        |          |
| ---      | HYDRO               | ---       | ---      | CURB RAMP                        | ---      | ---      |                        |          |
| ---      | BELL/MTS            | ---       | ---      | DETECTABLE WARNING SURFACE TILE  | ---      | ---      |                        |          |
| ---      | GAS                 | ---       | ---      | EDGE OF SIDEWALK/ASPHALT PATH    | ---      | ---      |                        |          |
| ---      | SIGNALS             | ---       | ---      | FENCE                            | ---      | ---      |                        |          |
| ○        | MANHOLE             | ●         | ---      | PROPERTY LINE                    | ---      | ---      |                        |          |
| □        | CATCH BASIN         | ■         | ---      | EDGE OF ASPHALT                  | ---      | ---      |                        |          |
| △        | CURB INLET          | ▽         | ---      | EDGE OF CONCRETE                 | ---      | ---      |                        |          |
| ○        | UTILITIES ADJUSTED  | △ □ ○     | ---      | MODIFIED BARRIER CURB            | ---      | ---      |                        |          |
| ⌋        | PLUG                | ⌋         | ---      | BARRIER CURB                     | ---      | ---      |                        |          |
| ◇        | HYDRANT             | ◆         | ---      | BARRIER CURB AND GUTTER          | ---      | ---      |                        |          |
| ⊙        | VALVE               | ⊙         | ---      | CONC SIDEWALK                    | ---      | ---      |                        |          |
| ⌋        | CURB STOP           | ⌋         | ---      | CONCRETE SLAB                    | ---      | ---      |                        |          |
| (231.00) | PAVEMENT GRADE      | (231.000) | ---      | ASPHALT                          | ---      | ---      | NORTH OR WEST SIDEWALK | ---      |
| #111     | CIVIC ADDRESS       |           | ---      | GRANULAR SURFACE                 | ---      | ---      | SOUTH OR EAST SIDEWALK | ---      |
| ⊕        | IRON BAR            |           | ---      | MILLED SURFACE                   | ---      | ---      | ROADWAY CENTRELINE     | ---      |
| ⊕        | HYDRO POLE          |           | ---      | PAVEMENT REPAIR FABRIC           | ---      | ---      | NORTH OR WEST GUTTER   | ---      |
| ---      | LEGEND-PLAN         | ---       | ---      | LEGEND-PROFILE                   | ---      | ---      | SOUTH OR EAST GUTTER   | ---      |

LOCATIONS APPROVED UNDERGROUND STRUCTURES

SIGNED BY: \_\_\_\_\_ DATE: \_\_\_\_\_

SUPV UG STRUCTURES

LOCATION OF UNDERGROUND STRUCTURES AS SHOWN ARE BASED ON THE BEST INFORMATION AVAILABLE BUT NO GUARANTEE IS GIVEN THAT ALL EXISTING UTILITIES ARE SHOWN OR THAT THE GIVEN LOCATIONS ARE EXACT CONFIRMATION OF EXISTENCE AND EXACT LOCATION OF ALL SERVICES MUST BE OBTAINED FROM THE INDIVIDUAL UTILITIES BEFORE PROCEEDING

| G.B.M. ELEV. | NO.               | REVISIONS | DATE       | BY   |
|--------------|-------------------|-----------|------------|------|
| 7            |                   |           |            |      |
| 6            |                   |           |            |      |
| 5            |                   |           |            |      |
| 4            |                   |           |            |      |
| 3            |                   |           |            |      |
| 2            |                   |           |            |      |
| 1            |                   |           |            |      |
| 0            | ISSUED FOR TENDER |           | 2023/02/14 | R.H. |

**wsp**

DESIGNED BY: R.H. CHECKED BY: R.H.  
 DRAWN BY: R.H./N.T. APPROVED BY: V.M.

HOR. SCALE: 1:250  
 VERTICAL: 1:10

RELEASED FOR CONSTRUCTION

DATE: SEPTEMBER 2022

WSP Canada Inc.  
 1600 Buffalo Place  
 Winnipeg, MB R3T 6B8  
 t. 204.477.6658  
 f. 204.474.2864  
 www.wsp.com

ENGINEER'S SEAL

S.C. MINY  
 MEMBER  
 2021

2023-02-14

CONSULTANT ACAD DWG. NO.  
 221-07897-00-46

**THE CITY OF WINNIPEG**  
 PUBLIC WORKS DEPARTMENT  
 ENGINEERING SERVICES DIVISION

2023 LOCAL STREET RENEWALS  
 LARCH AVENUE WEST  
 ACTIVE TRANSPORTATION PATH  
 STA. ---- TO STA. ----

FOR TENDER PURPOSES ONLY  
 NOT FOR CONSTRUCTION

CITY DRAWING NUMBER  
 SHEET 15 OF 15

TENDER NO.  
 908-2022

**METRIC**  
 WHOLE NUMBERS INDICATE MILLIMETRES  
 DECIMALIZED NUMBERS INDICATE METRES

**ENGINEERS  
 GEOSCIENTISTS  
 MANITOBA**  
 Certificate of Authorization  
 WSP Canada Inc.  
 No. 5750

Feb 14, 2023 - 3:11pm  
 P:\2022\221-07897-00 - 2023 Local Street Renewal 23-R-05\14.0 Tech\_Prof\_Serv\14.11 Hwy\_Bridgs\14.11.06\_Dwg\03\_Work\_Dwg\221-07897-00\_Winona\_St\_Plan&Profile.dwg - tab: 908-2022\_Drawing\_221-07897-00-46-R0