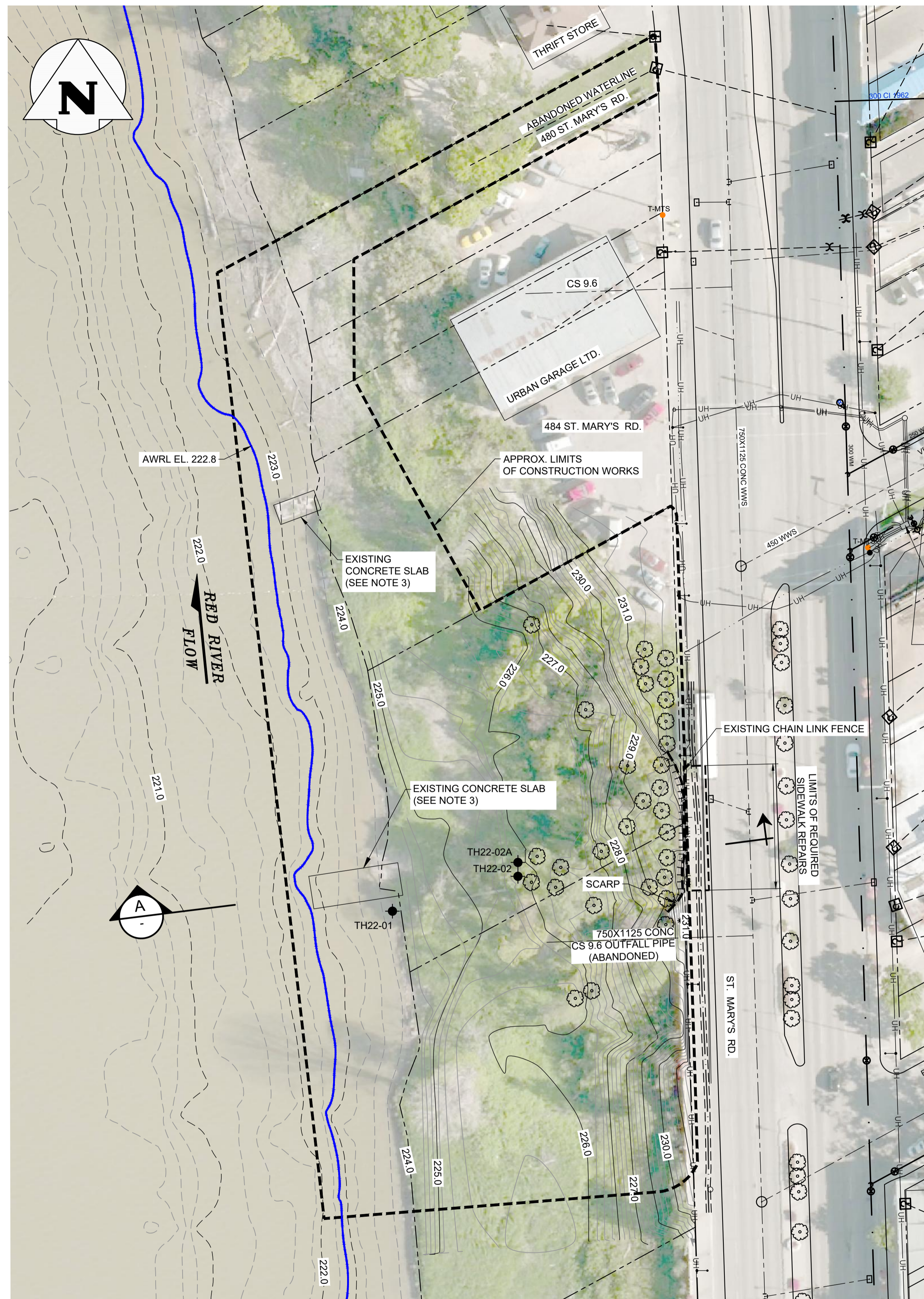
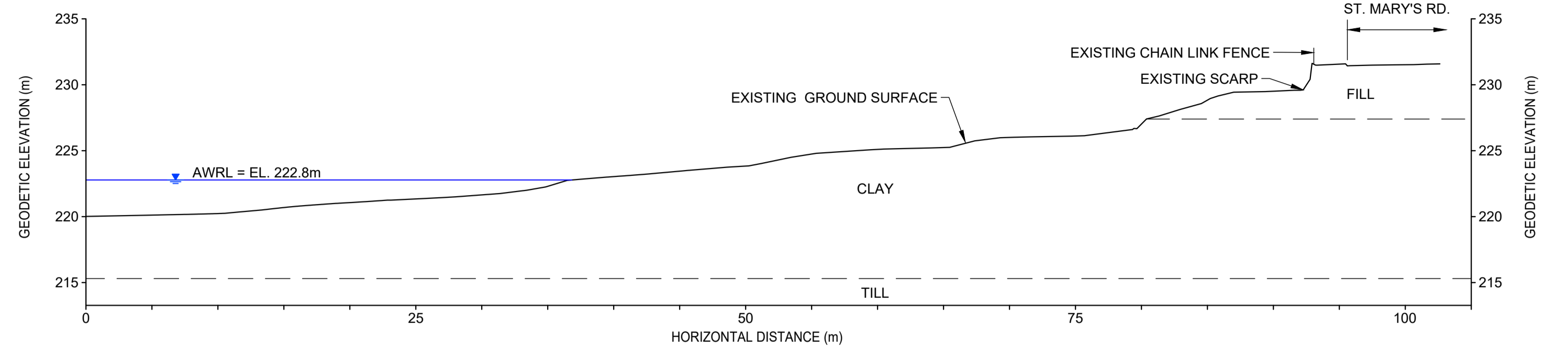


File: P:\Projects\2022\0107-010-GE-02 - Tab:Rev0 Plotted By: pdefner 22/12/08 [Thu 3:09pm]
 A1 (G:\559) / PLO SCALE: 1:1



PLAN
SCALE: 1:400 METRIC



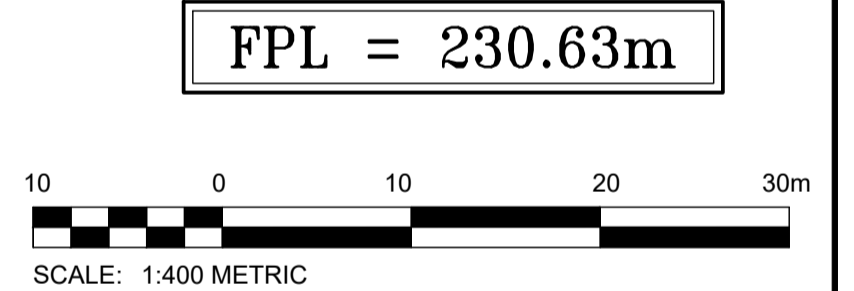
A TYPICAL SECTION
SCALE: 1:300 METRIC

- LEGEND:**
- ▬▬▬▬ SCARP
 - - - - - APPROX. LIMITS OF CONSTRUCTION AREA
 - AWRL - AVERAGE WINTER RIVER LEVEL = EL. 222.8m (TOP OF ICE)
 - TH22-02 - INSTRUMENTED TEST HOLE (BY KGS GROUP DEC. 2022) (SEE NOTE 4)

- NOTES:**
1. TOPOGRAPHIC CONTOURS ARE BASED ON KGS GROUP SURVEY COMPLETED IN JULY 2022. ALL DATA IS IN UTM ZONE 14, NAD83 ORIGINAL, CGVD28.
 2. BATHYMETRIC CONTOURS ARE BASED ON NORTH SOUTH CONSULTANTS SURVEY COMPLETED SEPTEMBER 30, 2022.
 3. CONCRETE REMAINS FROM HISTORICAL BOAT LAUNCH AND DOCKS LOCATIONS ARE APPROXIMATE.
 4. TEST HOLE INSTRUMENTATION IS BURIED BENEATH A METAL FLUSH MOUNT COVER.



SIDEWALK REPAIR AREA
SCALE: N.T.S.



METRIC
WHOLE NUMBERS INDICATE MILLIMETRES
DECIMALIZED NUMBERS INDICATE METRES

PROPERTY LIMITS DELINEATION
DELINEATION OF PROPERTY LIMITS AS SHOWN ON THIS DWG DOES NOT REPRESENT A "LEGAL SURVEY". KGS GROUP MAKES NO REPRESENTATION OR WARRANTY AS TO THE ACCURACY OF PROPERTY LIMITS DELINEATED ON THIS DWG, NOR ON THE DIMENSIONAL ACCURACY OF DWG FEATURES RELATIVE TO THOSE PROPERTY LIMITS.

WARNING

1. NOTIFY THE GAS COMPANY OF THE PROPOSED LOCATION OF EXCAVATION.
2. TAKE PRECAUTION TO AVOID DAMAGE TO GAS COMPANY INSTALLATIONS.
3. SEE PROVINCIAL REGULATION 210/72 FOR DETAILS.

ISSUED FOR TENDER

ENGINEERS GEOSCIENTISTS MANITOBA
Certificate of Authorization
KGS Group
No. 245

THE CITY OF WINNIPEG
PUBLIC WORKS DEPARTMENT
ENGINEERING DIVISION

PROJECT TITLE: **ST. MARY'S ROAD RIVERBANK STABILITY IMPROVEMENT WORK**

SHEET OF: **2** OF **9**

COMPUTER FILE NAME: 22-0107-010-GE-02

CITY DRAWING NUMBER: RW753-22-02 R1

EXISTING CONDITIONS PLAN AND SECTION

EXISTING	LEGEND-PLAN	PROPOSED	EXISTING	LEGEND-PLAN	PROPOSED	EXISTING	LEGEND-PROFILE	PROPOSED
---	LAND DRAINAGE SEWER	---	-x-x-	FENCE	-x-x-	○	TREE	○
---	WASTE WATER SEWER	---	●	TEST HOLE	●	○	LIGHT POST	○
---	GAS	---	—	GUY WIRE	—	○		○
---	HYDRO	---	—	LIGHT STANDARD	—	○		○
---	M.T.S.	---	—	BACK OF CURB	—	○		○
---	WATERMAIN	---	—	CONCRETE	—	○		○
---	HYDRANT	---	—	ASPHALT	—	○		○
---	VALVE	---	—	SIDEWALK	—	○		○
---	MANHOLE	---	—	PROPERTY LINE	—	○		○
---	CATCH BASIN	---	—	SURVEY BAR	—	○		○
---	CURB INLET	---	—	GEODETIC BENCHMARK	—	○		○
---	POLES	---	—	ELEVATION	—	○		○
---	EXISTING	---	—	LEGEND-PLAN	---	○		○
---	LEGEND-PLAN	---	—	PROPOSED	---	○		○

LOCATION APPROVED UNDERGROUND STRUCTURES

SUPV. U/G STRUCTURES COMMITTEE DATE

NOTE:
LOCATION OF UNDERGROUND STRUCTURES AS SHOWN ARE BASED ON THE BEST INFORMATION AVAILABLE BUT NO GUARANTEE IS GIVEN THAT ALL EXISTING UTILITIES ARE SHOWN OR THAT THE GIVEN LOCATIONS ARE EXACT. CONFIRMATION OF EXISTENCE AND EXACT LOCATION OF ALL SERVICES MUST BE OBTAINED FROM THE INDIVIDUAL UTILITIES BEFORE PROCEEDING WITH CONSTRUCTION.

NO.	REVISIONS	DATE	BY
0	ISSUED FOR TENDER	22/12/08	BPA

DESIGNED BY	CMR	CHECKED BY	jS
DRAWN BY	JP	APPROVED BY	BPA
HOR. SCALE:	AS NOTED	RELEASED FOR CONSTRUCTION:	
VERTICAL:		DATE:	2022-12-08

ENGINEER'S SEAL

CONSULTANT DRAWING NO.
GE-02