

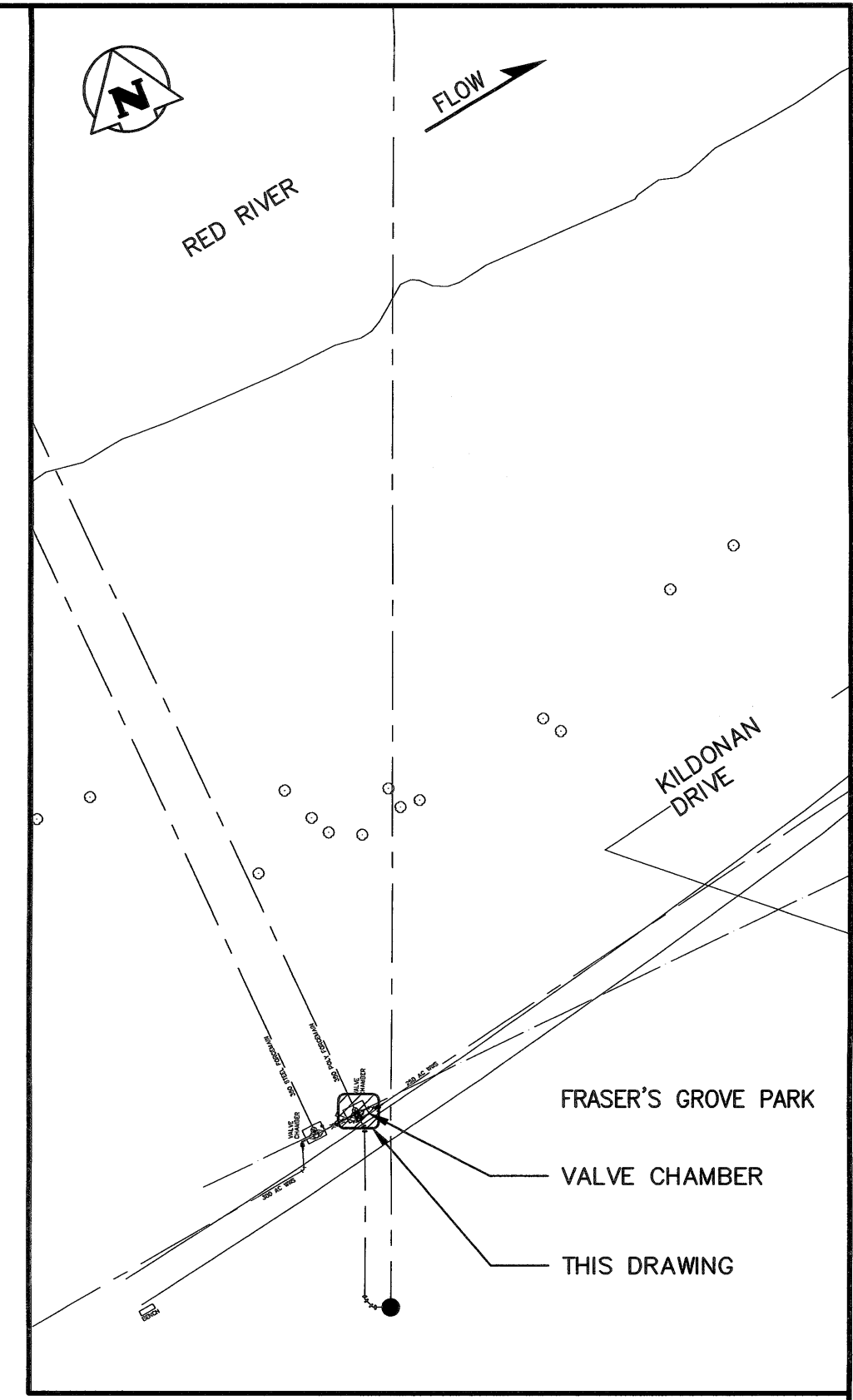
GENERAL NOTES:

- CONFORM TO ALL APPLICABLE CODES AND STANDARDS, INCLUDING AWWA/ANSI C600 (INSTALLATION OF DUCTILE IRON MAINS AND THEIR APPURTENANCES).
- DIMENSIONS SHOWN ARE APPROXIMATE. CONTRACTOR SHALL FIELD CONFIRM ALL DIMENSIONS AND DETAILS PRIOR TO PIPING FABRICATION OR OTHER WORK.
- ADJUST DIMENSIONS OF PIPE SPOOLS TO SUIT DIMENSIONS OF THE KNIFE GATE VALVE AND WYE. VICTAULIC COUPLING HAS BEEN INCLUDED TO ACCOMMODATE MINOR LINEAR GAP ADJUSTMENT BETWEEN THE TEE WHEN ROTATED 180° AND THE NEW PIPING. CONTRACTOR TO VERIFY ALIGNMENT PRIOR TO INITIATING PUMP SHUTDOWN AND ROTATING THE TEE TO ENSURE TIE-IN CAN BE COMPLETED DURING THE SHUTDOWN PERIOD.
- ALL PIPING TO BE MEASURED, PRE-ASSEMBLED (WHERE POSSIBLE), AND ALL POSSIBLE PREP WORK COMPLETED PRIOR TO HAWTHORNE PUMP STATION SHUTDOWNS.
- ROTATION OF THE TEE 180° FOR TIE-IN TO NEW PIPING DESCRIBED ON THIS DRAWING SHALL BE COMPLETED IN COORDINATION WITH PUMP STATION SHUTDOWNS. THE CONTRACTOR SHALL PROVIDE AN OPERATION PLAN AND SEQUENCE OF WORK, IN ACCORDANCE WITH PART E SPECIFICATIONS "HAWTHORNE VALVE CHAMBER MODIFICATIONS-HAWTHORNE PUMP STATION SHUTDOWNS".
- HAVE ALL NEW GASKETS AND NEW STAINLESS STEEL HARDWARE FOR FLANGED AND VICTAULIC CONNECTIONS ON HAND PRIOR TO DISASSEMBLY OF ANY CHAMBER PIPING.

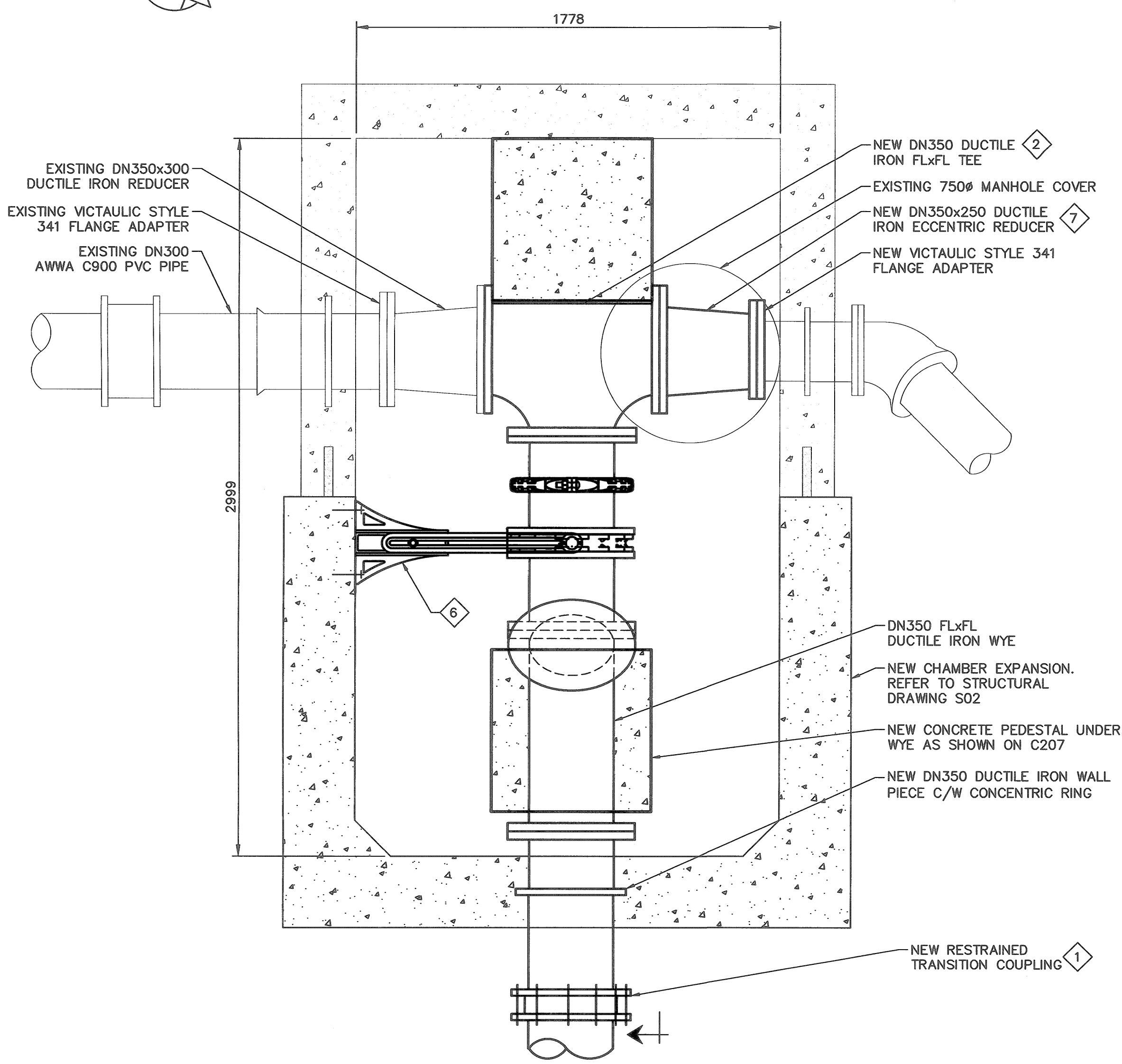
KEYNOTES:

- NEW RESTRAINED TRANSITION COUPLING TO BE IN ACCORDANCE WITH AWWA C219 STANDARDS.
- NEW DN350 DUCTILE IRON FLxFL TEE. PROVIDE NEW GASKETS AND STAINLESS STEEL FLANGE HARDWARE.
- NEW KNIFE GATE VALVE, STEM EXTENSION AND VALVE BOX.
- NEW CITY OF WINNIPEG STANDARD VALVE BOX WITH HINGED COVER MARKED WITH AN "S".
- NEW CITY OF WINNIPEG STANDARD VALVE STEM EXTENSION TYPE 304 STAINLESS STEEL FINISHED WITH 50x50mm (2"x2") SQUARE OPERATING NUT C/W CENTERING RING.
- NEW VALVE STEM GUIDE MOUNTED ON MANUFACTURER APPROVED EXTENSION BRACKET. LOCATE SUPPORT AT THE MIDWAY POINT OF THE NEW VALVE STEM EXTENSION IN ACCORDANCE WITH MANUFACTURER'S RECOMMENDATIONS.
- NEW DN350x250 DUCTILE IRON FLxFL ECCENTRIC REDUCER c/w NEW VICTAULIC STYLE 341 FLANGE ADAPTER. (NOTE: RECORD DRAWINGS DESCRIBE THIS ITEM AS AN ECCENTRIC REDUCER; CONTRACTOR TO FIELD CONFIRM PRIOR TO ORDERING NEW FITTING.)

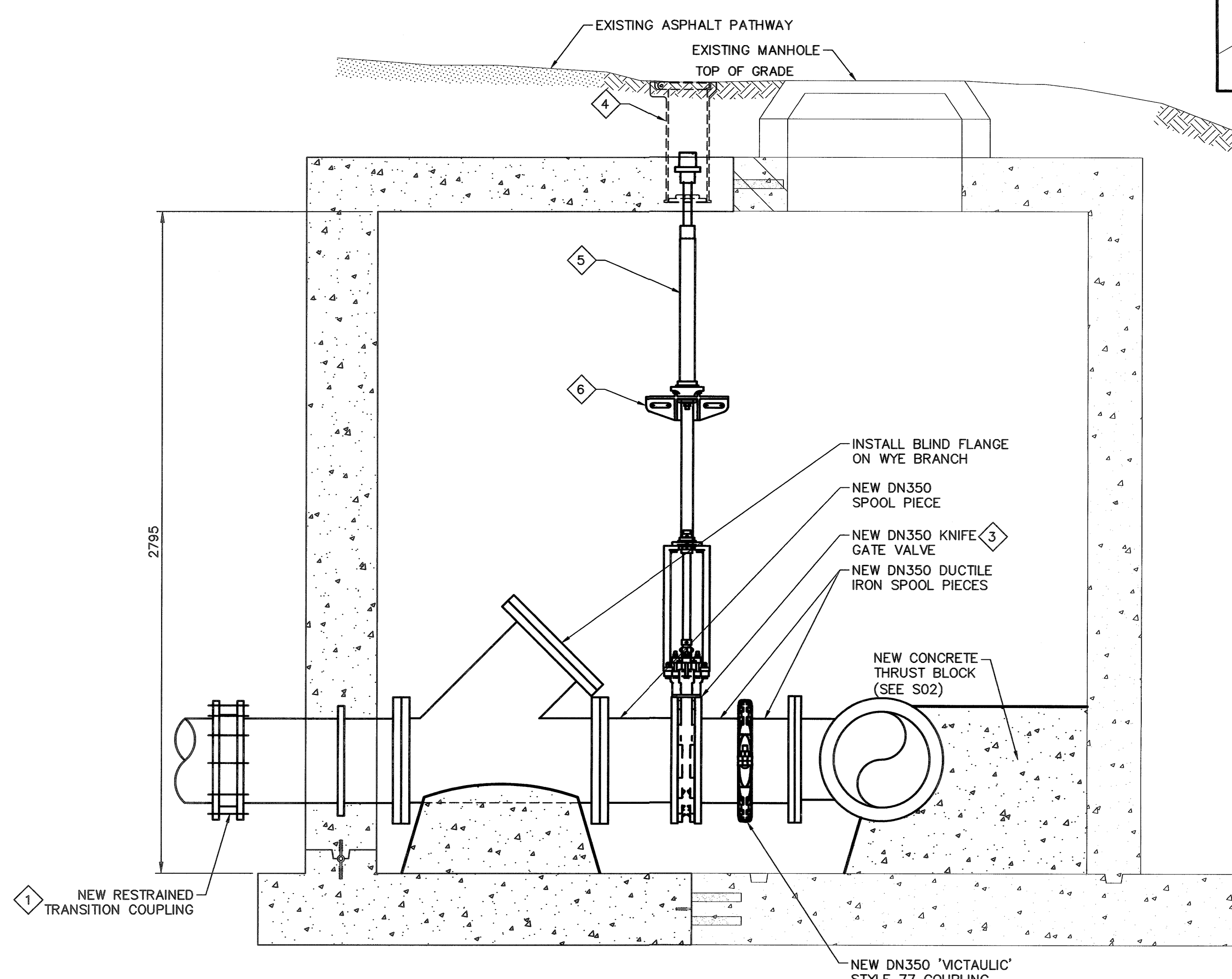
LEGEND	
	EXISTING PIPE/VALVES/EQUIPMENT
	NEW PIPING/VALVES



KEYPLAN
N.T.S.



PLAN
SCALE 1:15



SECTION A-A
SCALE 1:15

METRIC
WHOLE NUMBERS INDICATE MILLIMETRES
DECIMALIZED NUMBERS INDICATE METRES

ISSUED FOR TENDER
NOT TO BE USED FOR CONSTRUCTION

FOR INDEX PAGE
SEE DWG
1-0221S-D0007-001

LOCATION APPROVED UNDERGROUND STRUCTURES		B.M. ELEV.
SUPV. U/G STRUCTURES COMMITTEE	DATE	
NOTE: LOCATION OF UNDERGROUND STRUCTURES AS SHOWN ARE BASED ON THE BEST INFORMATION AVAILABLE BUT NO GUARANTEE IS GIVEN THAT ALL EXISTING UTILITIES ARE SHOWN OR THAT THE GIVEN LOCATIONS ARE EXACT. CONFIRMATION OF EXISTENCE AND EXACT LOCATION OF ALL SERVICES MUST BE OBTAINED FROM THE INDIVIDUAL UTILITIES BEFORE PROCEEDING WITH CONSTRUCTION.		
NO.	REVISIONS	DATE BY
0	ISSUED FOR TENDER	2023 03 14 RBO

DESIGNED BY		BP		CHECKED BY		KOR	
DRAWN BY		GEL		APPROVED BY		KOR	
SCALE:		HORIZONTAL AS NOTED		RELEASED FOR CONSTRUCTION			
VERTICAL		NA		DATE		2023 03 13	
PLOT DATE:		2023 03 13		DATE			

KGS GROUP

ENGINEER'S SEAL

PROVINCE OF MANITOBA
2023/03/13
K. D. RADTKE
Member
22256
REGISTERED PROFESSIONAL ENGINEER

CONSULTANT DRAWING NUMBER
22-0107-021_M202

THE CITY OF WINNIPEG
WATER AND WASTE DEPARTMENT
ENGINEERING DIVISION

NEWTON FORCE MAIN
RIVER CROSSING REPLACEMENT

MECHANICAL - CONSTRUCTION
HAWTHORNE CHAMBER MODIFICATIONS

SHEET 11 OF 14
CITY DRAWING NUMBER
1-0221S-M0004-001