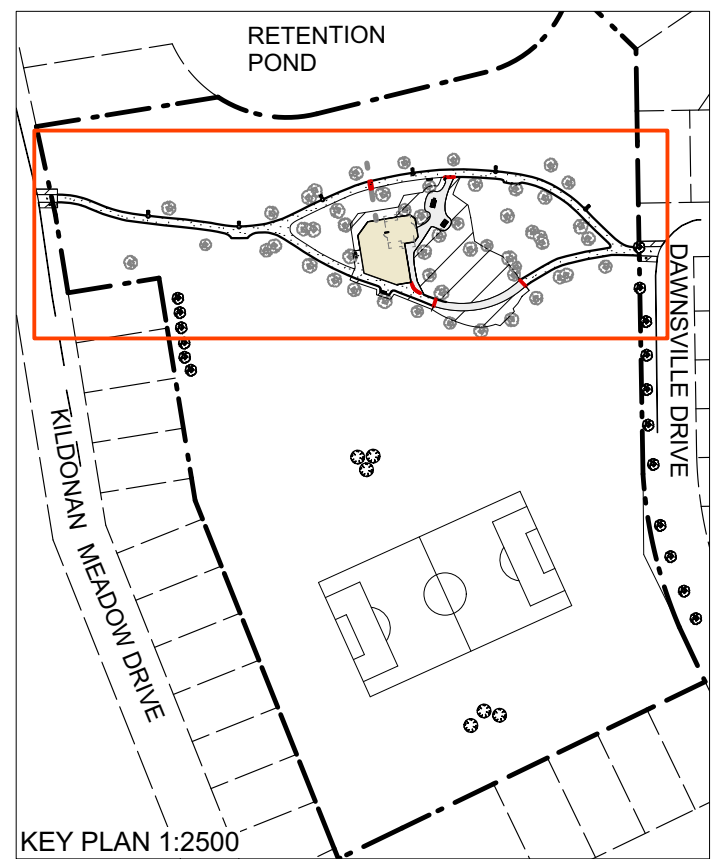
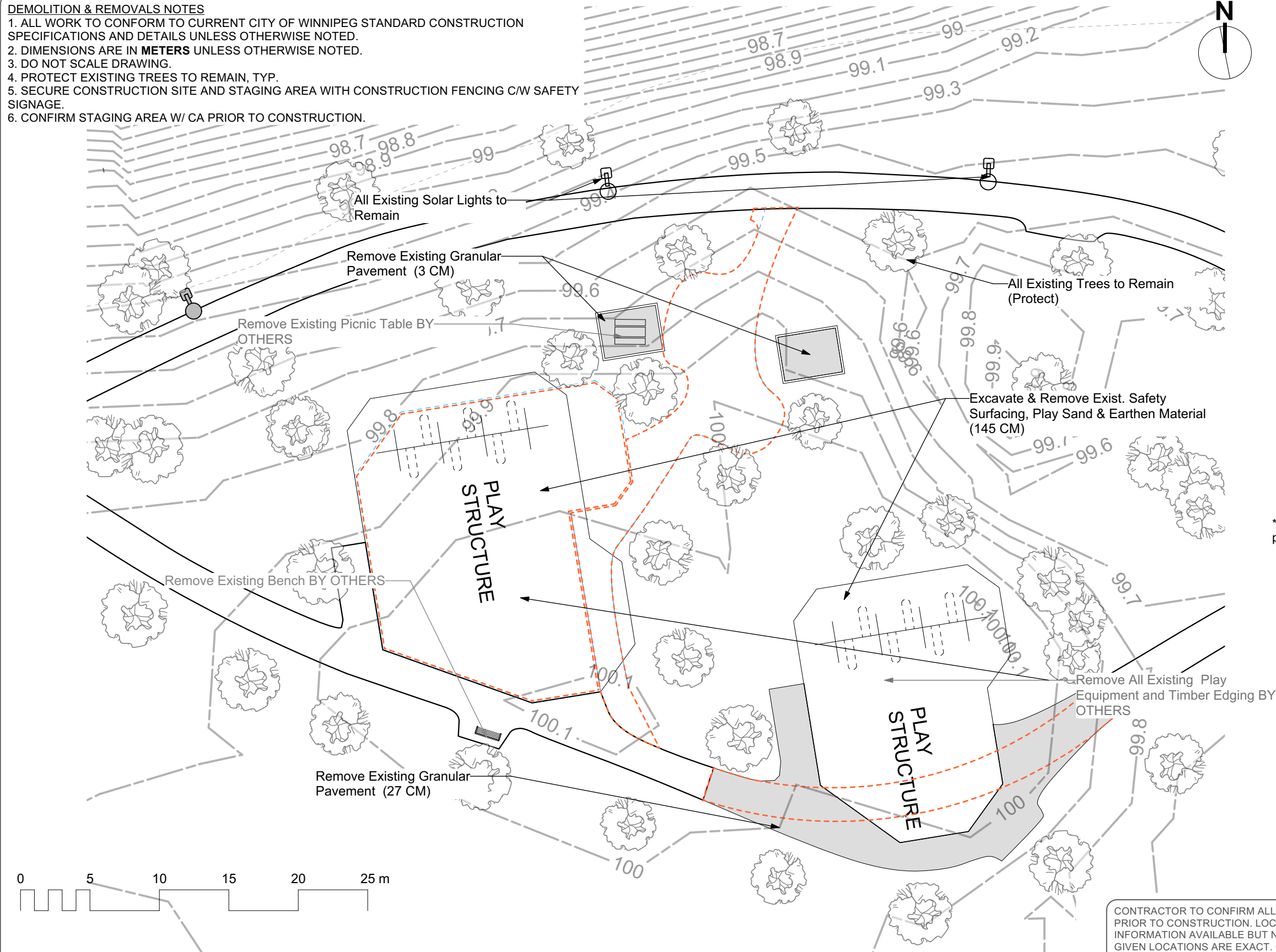


DEMOLITION & REMOVALS NOTES

1. ALL WORK TO CONFORM TO CURRENT CITY OF WINNIPEG STANDARD CONSTRUCTION SPECIFICATIONS AND DETAILS UNLESS OTHERWISE NOTED.
2. DIMENSIONS ARE IN METERS UNLESS OTHERWISE NOTED.
3. DO NOT SCALE DRAWING.
4. PROTECT EXISTING TREES TO REMAIN, TYP.
5. SECURE CONSTRUCTION SITE AND STAGING AREA WITH CONSTRUCTION FENCING C/W SAFETY SIGNAGE.
6. CONFIRM STAGING AREA W/ CA PRIOR TO CONSTRUCTION.



*Note: Dashed orange lines indicate proposed pathways and play areas
 **Note: Existing benches and waste receptacles not indicated on this plan are to remain in place



CONTRACTOR TO CONFIRM ALL DIMENSIONS AND REPORT ANY DISCREPANCIES TO CONTRACT ADMINISTRATOR PRIOR TO CONSTRUCTION. LOCATION OF UNDERGROUND STRUCTURES AS SHOWN ARE BASED ON THE BEST INFORMATION AVAILABLE BUT NO GUARANTEE IS GIVEN THAT ALL EXISTING UTILITIES ARE SHOWN OR THAT THE GIVEN LOCATIONS ARE EXACT. CONFIRMATION OF EXISTENCE AND EXACT LOCATION OF ALL SERVICES MUST BE OBTAINED FROM THE INDIVIDUAL UTILITIES BEFORE PROCEEDING WITH CONSTRUCTION.

| | | | | | | |
|---|--------------|------------|-------------|--|--|---------------------------------------|
|  <p>THE CITY OF WINNIPEG Planning, Property and Development Department Planning and Land Use Division Unit 15 - 30 Fort Street, Winnipeg, MB, (R3C 4X5)</p> | DESIGNED BY | IM | CHECKED BY | | DRAWING TITLE | DRAWING NO. |
| | DRAWN BY | IM | APPROVED BY | MANAGER, PARK AND OPEN SPACES | DATE | K.18-F1 |
| | HORIZ. SCALE | 1:300 | | | | |
| | DATE | March 2022 | | MANAGER, PLANNING AND LAND USE DIVISION | DATE | SITE ADDRESS |
| | | | | | Playground Redevelopment Existing Conditions and Removals | BID OPPORTUNITY NO. 80-2022 |