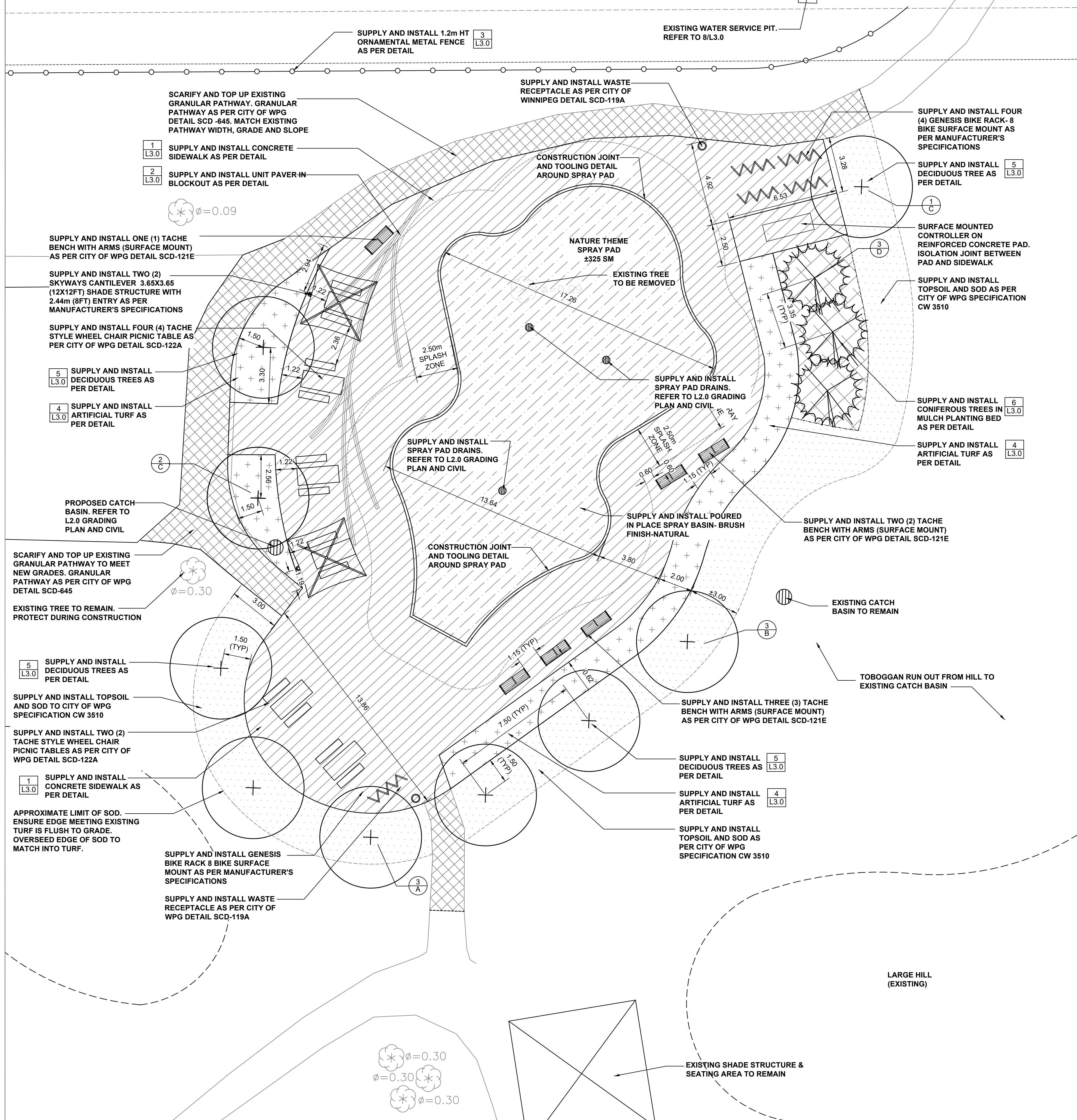


# MANITOBA HYDRO EASEMENT AGREEMENT



## LEGEND

- PROPERTY LINE
- LIMIT OF WORK
- [Hatched Box] CONCRETE SPRAY BASIN
- [Hatched Box] CONCRETE SIDEWALK
- [Hatched Box] LIMESTONE PATHWAY
- [Hatched Box] TOPSOIL AND SOD
- [Hatched Box] WOOD MULCH PLANTING BED
- [Dotted Box] ARTIFICIAL TURF
- (+ in circle) PROPOSED DECIDUOUS TREE
- (\* in circle) PROPOSED CONIFEROUS TREE
- (Tree in circle) EXISTING TREES TO REMAIN
- 1-1-1 DETAIL KEY
- 1-1-1 DETAIL NUMBER
- 1-1-1 SHEET NUMBER
- 1-1-1 PLANT KEY
- 1-1-1 QUANTITY
- 1-1-1 PLANT TYPE

## GENERAL NOTES

1. ALL DIMENSIONS ARE IN METRES UNLESS NOTED OTHERWISE.
2. CONTRACTOR TO STAKE OUT LOCATION OF ALL WORKS FOR APPROVAL PRIOR TO ANY CONSTRUCTION OR REMOVALS.
3. CONTRACTOR TO CONFIRM ALL DIMENSIONS ON SITE AND REPORT ANY DISCREPANCIES PRIOR TO CONSTRUCTION.
4. DURING CONSTRUCTION, CONTRACTOR TO PROTECT TO CITY OF WINNIPEG STANDARDS ALL EXISTING TREES, SIDEWALKS, CURBS, SOD, UTILITIES AND PAVING TO REMAIN. AREAS DAMAGED DURING CONSTRUCTION TO BE REPAIRED TO CITY OF WINNIPEG STANDARDS AT CONTRACTOR'S COST.
5. CONSTRUCTION ACCESS TO BE LIMITED TO THE ROUTES SPECIFIED ON SITE BY CONTRACT ADMINISTRATOR.
6. CONTRACTOR IS RESPONSIBLE FOR ALL REMOVALS AS REQUIRED TO CONSTRUCT ALL WORKS AS SHOWN ON PLANS AND DETAILS. ALL ITEMS TO BE REMOVED MUST BE DISPOSED OF LEGALLY OFF SITE.
7. CONTRACTOR TO REPAIR ALL ON AND OFF SITE SODDED AREAS, SHRUB BEDS, TREES, CONCRETE, ROAD PAVING AND CURBS ETC., DAMAGED DURING CONSTRUCTION TO THE CITY OF WINNIPEG STANDARDS AT THEIR OWN COST.
8. REFER TO CIVIL FOR SITE SERVICING
9. REFER ALSO TO MECHANICAL AND ELECTRICAL
10. REFER ALSO TO WRITTEN SPECIFICATIONS.

## PLANTING NOTES

1. LOCATION OF ALL PLANT MATERIAL TO BE MARKED OUT ON SITE AND APPROVED BY CONTRACT ADMINISTRATOR PRIOR TO PLANTING.
2. TREES SPACING, UNLESS OTHERWISE NOTED: DECIDUOUS TREES: 6.0m MIN. CONIFEROUS TREE: 3.0m MIN.
3. ALL PLANT MATERIAL TO BE BEST QUALITY. PLANT MATERIAL TO BE REVIEWED ON SITE BY LANDSCAPE ARCHITECT PRIOR TO PLANTING. PLANTS NOT ACCEPTABLE ARE TO BE REPLACED AND NEW PLANTS APPROVED PRIOR TO PLANTING. REPLACEMENTS ARE AT THE CONTRACTOR'S OWN COST.
4. ALL PLANTING EXCAVATIONS ARE TO BE REVIEWED AND APPROVED BY LANDSCAPE ARCHITECT PRIOR TO PLACEMENT OF DRAINAGE COURSE, FILTER FABRIC AND/OR SOIL
5. ALL SUB DRAINS TO BE CONNECTED TO LDS UNLESS OTHERWISE NOTED. REFER TO CIVIL DRAWINGS.
6. ALL PLANTING BEDS WITH TREES MUST HAVE MINIMUM 600mm DEPTH PLANTING SOIL FOR THE ENTIRE AREA OF THE BED.
7. REFER TO WRITTEN SPECIFICATIONS.
8. CONTRACTOR TO REPORT ANY DISCREPANCY WITH ON SITE CONDITIONS TO LANDSCAPE ARCHITECT PRIOR TO CONSTRUCTION.

## PLANT LIST

KEY	QTY	COMMON NAME/ BOTANICAL NAME	SIZE	REMARKS
<b>DECIDUOUS TREES</b>				
A	3	SILVER MAPLE 'SILVER CLOUD'/ ACER SACCHARINUM 'SILVER CLOUD'	75mm CAL	SPECIMEN, W.B. MACHINE DUG WITH MIN. 10 BRANCHES IN WELL BRANCHED HEAD, STRAIGHT TRUNK, MIN. HT. 6.0m BRANCHING HT 1.8m
B	3	HARVEST GOLD LINDEN/ TILIA MONGOLICA 'HARVEST GOLD'	75mm CAL	SPECIMEN, W.B. MACHINE DUG WITH MIN. 10 BRANCHES IN WELL BRANCHED HEAD, STRAIGHT TRUNK, MIN. HT. 6.0m BRANCHING HT 1.8m
C	3	DISCOVERY ELM/ ULMUS AMERICANA 'DISCOVERY'	75mm CAL	SPECIMEN, W.B. MACHINE DUG WITH MIN. 10 BRANCHES IN WELL BRANCHED HEAD, STRAIGHT TRUNK, MIN. HT. 6.0m BRANCHING HT 1.8m
<b>CONIFEROUS TREES</b>				
D	3	BLACKHILL SPRUCE/ PICEA GLAUCA 'DENSATA'	1.8m HT	SPECIMEN, W.B. HAND DUG WITH FULL FORM AND SINGLE STRAIGHT LEADER, MIN 1.8m HT AT TIME OF PLANTING

No.	Revisions	Date	By
2	ISSUED FOR ADDENDUM #1	2022-10-06	MN
1	ISSUED FOR TENDER	2022-09-28	MN

Date: 2022-09-21 NTS  
 Scale: \_\_\_\_\_  
 Designed By: MN/JW Drawn By: MN Checked By: JW

Seals

**McGOWAN·RUSSELL**  
 Client: CITY OF WINNIPEG

Project Title: **MAPLES CC & ADSUM PARK SPRAY PAD**

Sheet Title: **LAYOUT AND PLANTING PLAN**

Project No. 22-015 Drawing No. L1.1

