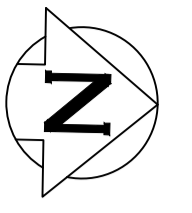


AS SIZE: 894mm x 641mm

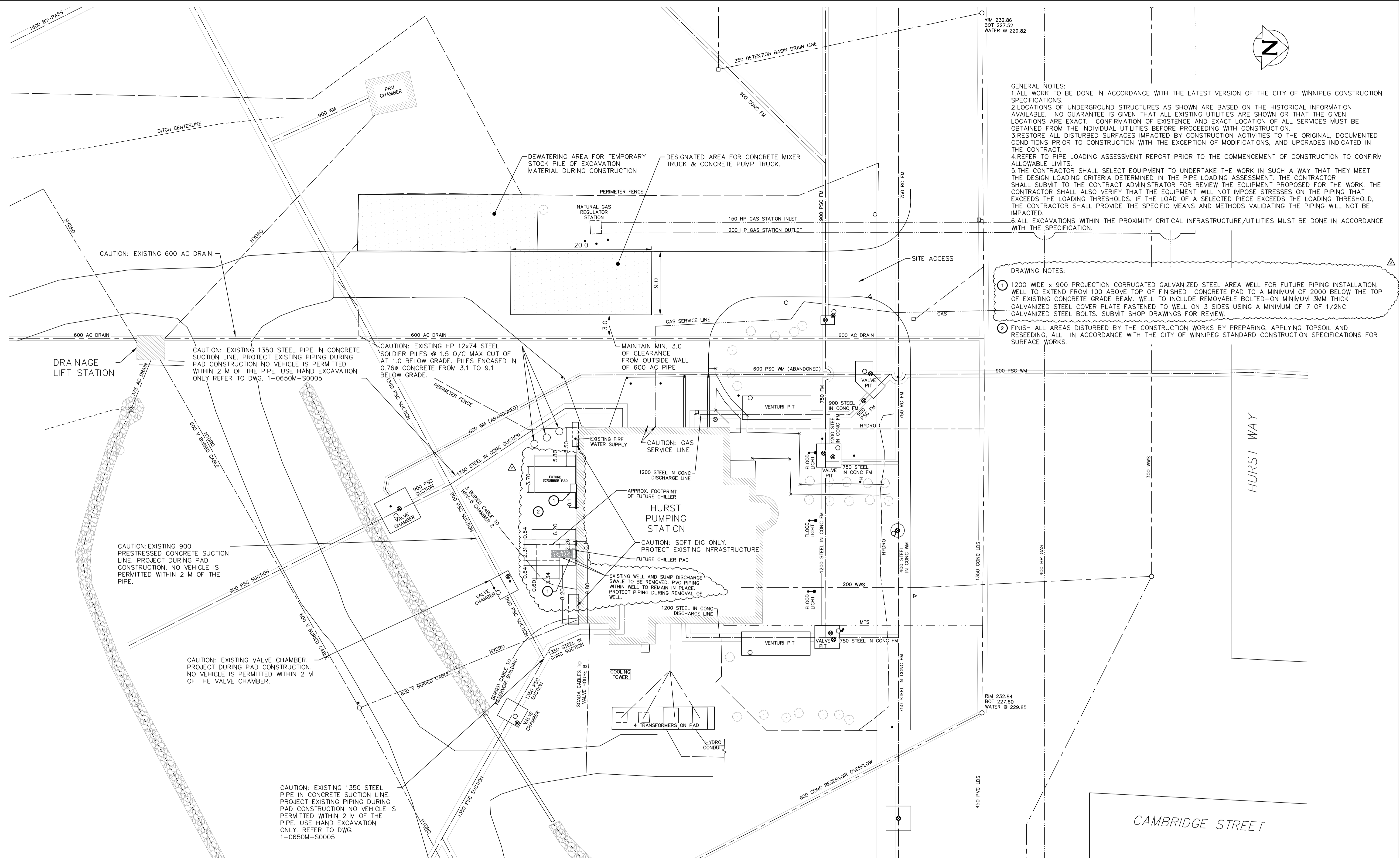


GENERAL NOTES:

1. ALL WORK TO BE DONE IN ACCORDANCE WITH THE LATEST VERSION OF THE CITY OF WINNIPEG CONSTRUCTION SPECIFICATIONS.
2. LOCATIONS OF UNDERGROUND STRUCTURES AS SHOWN ARE BASED ON THE HISTORICAL INFORMATION AVAILABLE. NO GUARANTEE IS GIVEN THAT ALL EXISTING UTILITIES ARE SHOWN OR THAT THE GIVEN LOCATIONS ARE EXACT. CONFIRMATION OF EXISTENCE AND EXACT LOCATION OF ALL SERVICES MUST BE OBTAINED FROM THE INDIVIDUAL UTILITIES BEFORE PROCEEDING WITH CONSTRUCTION.
3. RESTORE ALL DISTURBED SURFACES IMPACTED BY CONSTRUCTION ACTIVITIES TO THE ORIGINAL, DOCUMENTED CONDITIONS PRIOR TO CONSTRUCTION WITH THE EXCEPTION OF MODIFICATIONS, AND UPGRADES INDICATED IN THE CONTRACT.
4. REFER TO PIPE LOADING ASSESSMENT REPORT PRIOR TO THE COMMENCEMENT OF CONSTRUCTION TO CONFIRM ALLOWABLE LIMITS.
5. THE CONTRACTOR SHALL SELECT EQUIPMENT TO UNDERTAKE THE WORK IN SUCH A WAY THAT THEY MEET THE DESIGN LOADING CRITERIA DETERMINED IN THE PIPE LOADING ASSESSMENT. THE CONTRACTOR SHALL SUBMIT TO THE CONTRACT ADMINISTRATOR FOR REVIEW THE EQUIPMENT PROPOSED FOR THE WORK. THE CONTRACTOR SHALL ALSO VERIFY THAT THE EQUIPMENT WILL NOT IMPOSE STRESSES ON THE PIPING THAT EXCEEDS THE LOADING THRESHOLDS. IF THE LOAD OF A SELECTED PIECE EXCEEDS THE LOADING THRESHOLD, THE CONTRACTOR SHALL PROVIDE THE SPECIFIC MEANS AND METHODS VALIDATING THE PIPING WILL NOT BE IMPACTED.
6. ALL EXCAVATIONS WITHIN THE PROXIMITY CRITICAL INFRASTRUCTURE/UTILITIES MUST BE DONE IN ACCORDANCE WITH THE SPECIFICATION.

DRAWING NOTES:

1. 1200 WIDE x 900 PROJECTION CORRUGATED GALVANIZED STEEL AREA WELL FOR FUTURE PIPING INSTALLATION. WELL TO EXTEND FROM 100 ABOVE TOP OF FINISHED CONCRETE PAD TO A MINIMUM OF 2000 BELOW THE TOP OF EXISTING CONCRETE GRADE BEAM. WELL TO INCLUDE REMOVABLE BOLTED-ON MINIMUM 3MM THICK GALVANIZED STEEL COVER PLATE FASTENED TO WELL ON 3 SIDES USING A MINIMUM OF 7 OF 1/2" GALVANIZED STEEL BOLTS. SUBMIT SHOP DRAWINGS FOR REVIEW.
2. FINISH ALL AREAS DISTURBED BY THE CONSTRUCTION WORKS BY PREPARING, APPLYING TOPSOIL AND RESEEDING, ALL IN ACCORDANCE WITH THE CITY OF WINNIPEG STANDARD CONSTRUCTION SPECIFICATIONS FOR SURFACE WORKS.



| | |
|-------------------|--|
| 1-0640A-C0002-001 | STRUCTURAL REPAIRS AND DRAINAGE BUILDING UPGRADES MUNICIPAL GRADING PLAN |
| WH5621-1 | WILKES AVE. RESERVOIRS NO. 1 & 2 GENERAL ARRANGEMENT |
| WH5621-4 | WILKES AVE. RESERVOIRS NO. 1 & 2 DRAINAGE SEWER DETAILS |
| WH5621-17 | WILKES AVE. RESERVOIRS NO. 1 & 2 DETAILS OF VALVE PITS 'G' & 'H' FOR 48" BUTTERFLY VALVES |
| WH5621-19 | WILKES AVE. RESERVOIRS NO. 1 & 2 DETAILS OF VALVE PIT 'C' FOR 2-36" AND 1-24: BUTTERFLY VALVES |
| WH5622-18 | WILKES AVE. PUMPING STATION SITE PLAN SHOWING PIPE LAYOUT |
| WH5622-20 | WILKES AVE. PUMPING STATION MAIN PIPE LAYOUT SECTIONS |
| WH5622-26 | WILKES AVE. PUMPING STATION DETAILS OF VALVE PITS 'C', 'D', AND 'E' |
| WH5622-27 | WILKES AVE. PUMPING STATION VENTURI METER PITS DET'S |
| D-1027 | WILKES AVE. FEEDERMAIN, WILKES AVE. -460 FT. W. OF WAVERLEY TO W.D. HURST PUMPING STATION |
| DRAWING NUMBER | REFERENCE DRAWINGS |

METRIC
WHOLE NUMBERS INDICATE MILLIMETRES
DECIMALIZED NUMBERS INDICATE METRES

NOTE: ALL VALVES INSTALLED COUNTERCLOCKWISE TO CLOSE



| NO. | REVISIONS | DATE | DESIGN | CHECK |
|-----|-------------------------|------------|--------|-------|
| 2 | ISSUED FOR ADDENDUM #1 | 2023/05/01 | CF | CC |
| 0 | ISSUED FOR TENDER | 2023/03/27 | CF | CC |
| 1 | ISSUED AS-BUILT | 2022/04/14 | - | - |
| 00 | ISSUED FOR CONSTRUCTION | 2020/06/18 | - | - |

AECOM

DESIGNED BY: CC
DRAWN BY: RJ

CHECKED BY: RC
APPROVED BY: BP

SCALE: 1:250

DATE: 2023/05/01

CONSULTANT NO.: 60664207

ENGINEER'S SEAL

THE CITY OF WINNIPEG
WATER AND WASTE DEPARTMENT

HURST PUMPING STATION
STRUCTURAL REPAIRS AND DRAINAGE BUILDING UPGRADES
MUNICIPAL
SITE PLAN

CITY DRAWING NUMBER: 1-0650A-C0001
SHEET: 001
REV: 2
SIZE: A1

LAST SAVE: 2023/05/01 9:28 AM
PATH: C:\Users\antony.rousseau\Desktop\1-0650A-C0002-001\1-0650A-C0002-001.dwg