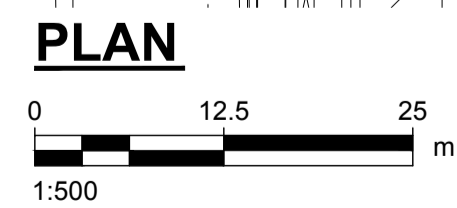


- NOTES**
1. ALL WORK AND MATERIALS IN ACCORDANCE WITH CITY OF WINNIPEG STANDARD CONSTRUCTION SPECIFICATIONS.
  2. DO NOT SCALE DRAWING. ALL MEASUREMENTS MUST BE OBTAINED FROM STATED DIMENSIONS.
  3. BENCHMARK: PILE 115, EL.=237.103, EAST SIDE OF PR207 SOUTH SIDE OF GWWD RAIL, N.W. CORNER OF CELL #4
  4. LOCATION OF UNDERGROUND STRUCTURES AS SHOWN ARE BASED ON THE BEST INFORMATION AVAILABLE BUT NO GUARANTEE IS GIVEN THAT ALL EXISTING UTILITIES ARE SHOWN OR THAT GIVEN LOCATIONS ARE EXACT.
  5. CONFIRMATION OF EXISTENCE AND EXACT LOCATION OF ALL SERVICES MUST BE OBTAINED FROM THE INDIVIDUAL UTILITIES BEFORE PROCEEDING WITH CONSTRUCTION.
  6. UNSUITABLE MATERIAL TO BE REMOVED FROM SITE.
  7. ALL PIPE BEDDING TO BE CLASS B BEDDING.
  8. BACKFILL WITHIN 1 M OF PAVED AREAS SHALL BE CLASS 2 BACKFILL. BACKFILL UNDER GRASSED AREAS SHALL BE CLASS 4 BACKFILL



**ENGINEERS GOSCIENTISTS MANITOBA**  
 Certificate of Authorization  
 AECOM Canada Ltd.  
 No. 4671 Date: 2022-09-07

**METRIC**  
 WHOLE NUMBERS INDICATE MILLIMETRES  
 DECIMALIZED NUMBERS INDICATE METRES

NO.	REVISIONS	DATE	DESIGN	CHECK
PD	ISSUED FOR CONSTRUCTION	22/09/07	MG	MM
PC	ISSUED FOR 90%	22/07/18	MG	MM
PB	ISSUED FOR 30%	22/04/14	MG	MM
PA	ISSUED FOR 30% REVIEW	22/02/25	MG	MM

<b>AECOM</b>	
DESIGNED BY: MG	CHECKED BY: MGM
DRAWN BY: JP	APPROVED BY: KWF
SCALE: AS SHOWN	RELEASED FOR CONSTRUCTION BY: MATTHEW SKINNER
DATE: 2022-09-07	DATE: SEPT 8, 2022
CONSULTANT NO.:	C-0002

ENGINEER'S SEAL  
 ORIGINAL SIGNED  
 BY M.P.A  
 GAUDREAU  
 SEPTEMBER 7,  
 2022

<b>THE CITY OF WINNIPEG</b> WATER AND WASTE DEPARTMENT WATER TREATMENT PLANT - FLOOD PROTECTION CLEARWELL CIVIL 375 LDS PLAN AND PROFILE			
CITY DRAWING NUMBER	SHEET	REV.	SIZE
1-0601T-C0002-001	003	PD	A1