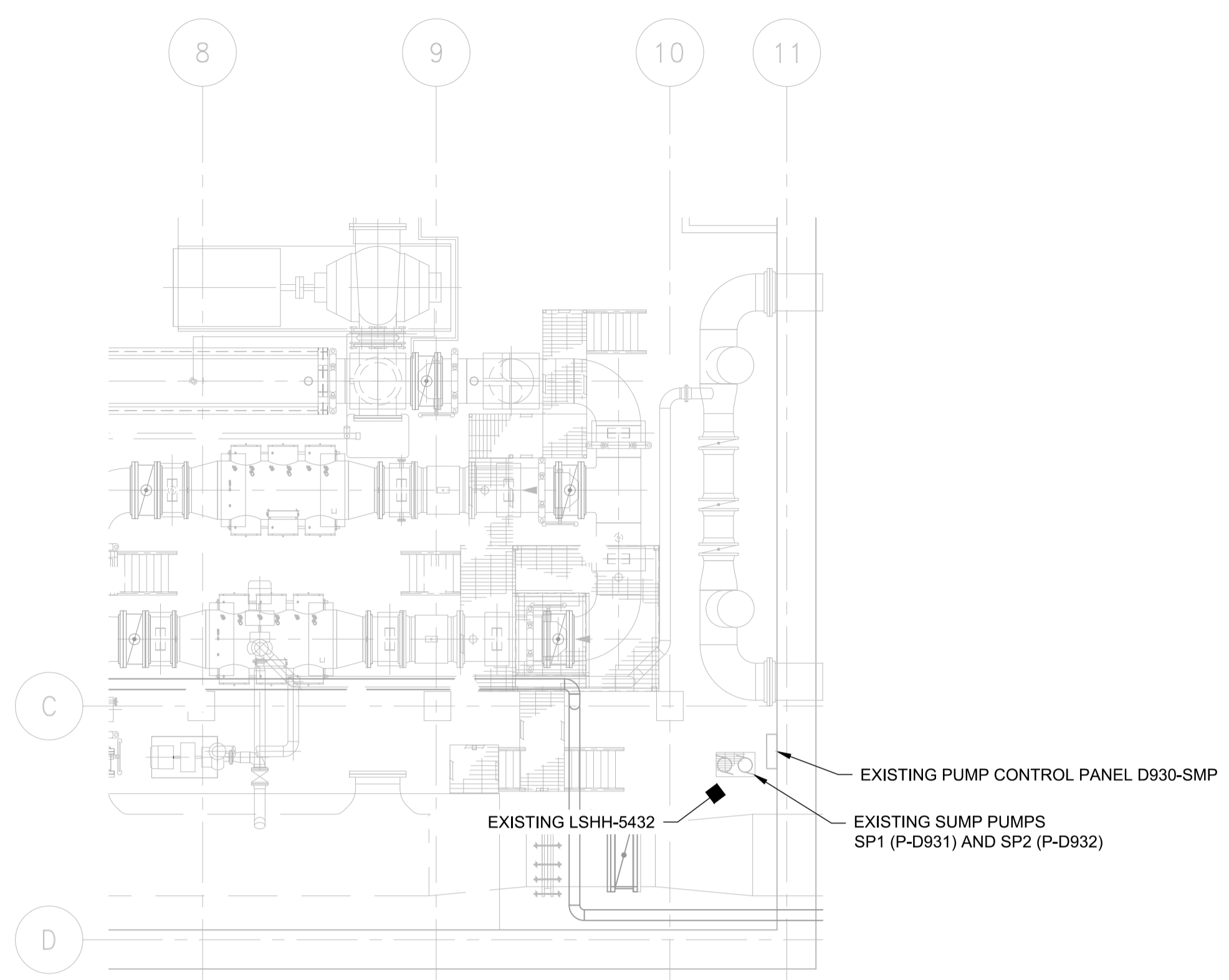
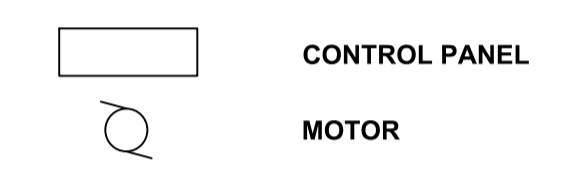


1 PARTIAL PLAN ABOVE EL. 227.0 - STORM SUMP
NTS



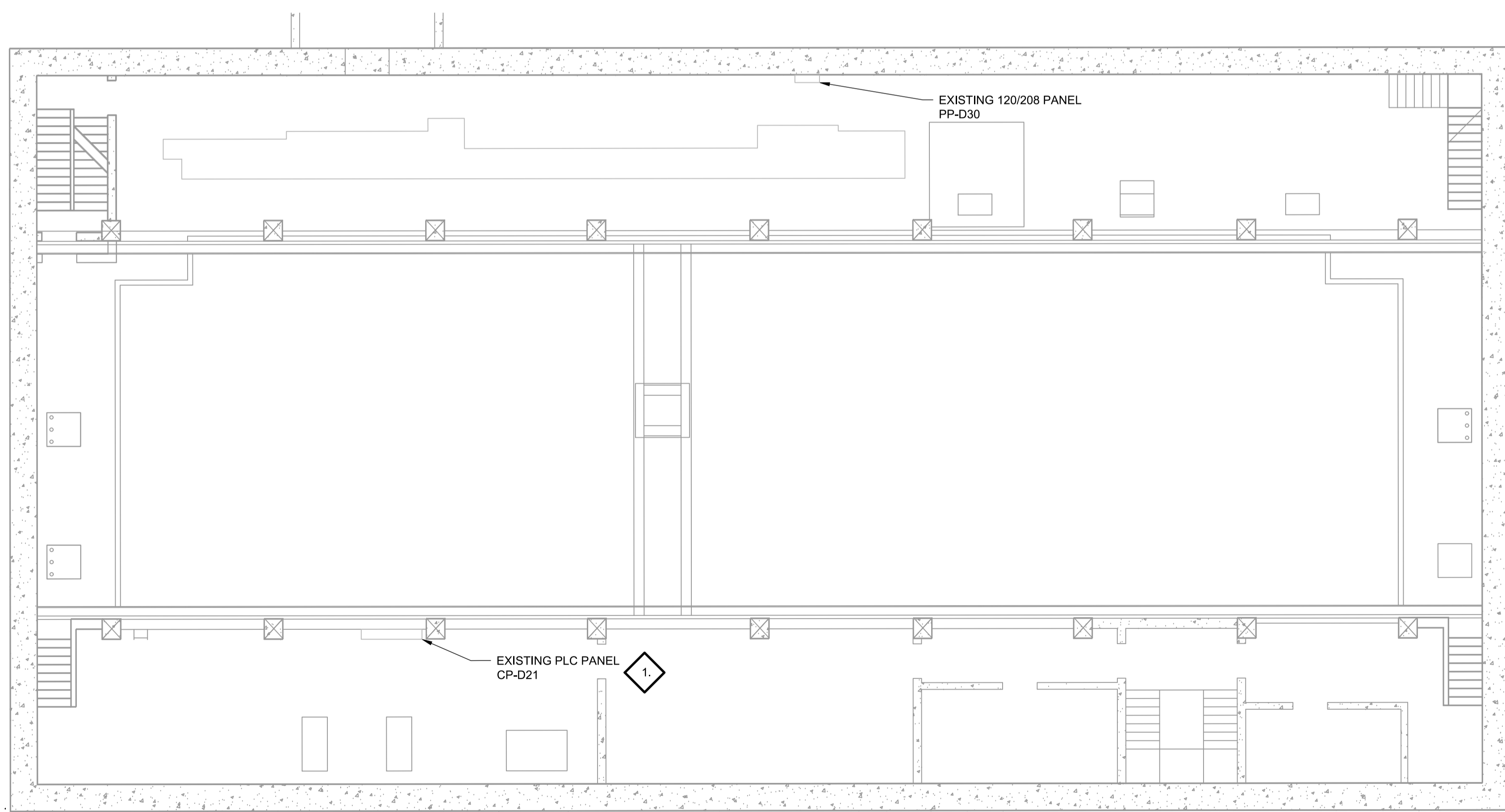
2 PARTIAL PLAN ABOVE EL. 227.0 - SANITARY PUMP
NTS

LEGEND:



KEY NOTES

1. CONNECT NEW VALVES AND FLOATS TO SPARE I/O CARDS USING MULTICONDUCTOR #14 AWG TECK90 CU. COORDINATE AVAILABLE SPARES WITH CONTRACT ADMINISTRATOR. DO NOT RUN CABLES IN EXISTING CABLE TRAY UNLESS DERATED AND BARRIRED FROM HIGHER VOLTAGES AND FREE AIR SPACING BETWEEN EXISTING CABLES IS MAINTAINED.
2. PROVIDE NEW VALVE CONTROL STATION AND ASSOCIATED JUNCTION BOX(ES) AS REQUIRED TO TERMINATE FLOAT CABLES, VALVE POWER FEED SPLITTER, AND VALVE CONTROLS.
3. INSTALL NEW STATION FLOOD LOCKOUT FLOAT LSHH-93605 TO TRIGGER AT SAME LEVEL AS EXISTING EAST SUMP STATION FLOOD LOCKOUT FLOAT LSHH-5432.



3 PARTIAL PLAN ABOVE 230.8M
NTS

**ENGINEERS
GEOLOGISTS
MANITOBA**
Certificate of Authorization
AECOM Canada Ltd.
No. 4671 Date: 2022-09-07

METRIC
WHOLE NUMBERS INDICATE MILLIMETRES
DECIMALIZED NUMBERS INDICATE METRES

NO.	REVISIONS	DATE	DESIGN	CHECK
PB	ISSUED FOR CONSTRUCTION	22/09/06	CR	JG
PA	ISSUED FOR 90%	22/07/18	CR	JG

AECOM

DESIGNED BY: CR	CHECKED BY: JG
DRAWN BY: TW	APPROVED BY: KWF
SCALE: AS SHOWN	RELEASED FOR CONSTRUCTION BY: MATTHEW SKINNER
DATE: 2022-09-07	DATE: 2022-09-08
CONSULTANT NO.: E-0002	

ENGINEER'S SEAL
**ORIGINAL SIGNED
BY C.L.
ROBINSON
2022-09-06**

THE CITY OF WINNIPEG
WATER AND WASTE DEPARTMENT

WATER TREATMENT PLANT - FLOOD PROTECTION
BOOSTER PUMP STATION
ELECTRICAL - PARTIAL PLANS
LOWER LEVEL LAYOUT ABOVE 227.000m
UPPER LEVEL LAYOUT ABOVE 230.8m

CITY DRAWING NUMBER 1-0601D-E0002-001	SHEET 013	REV. PB	SIZE A1
---	---------------------	-------------------	-------------------