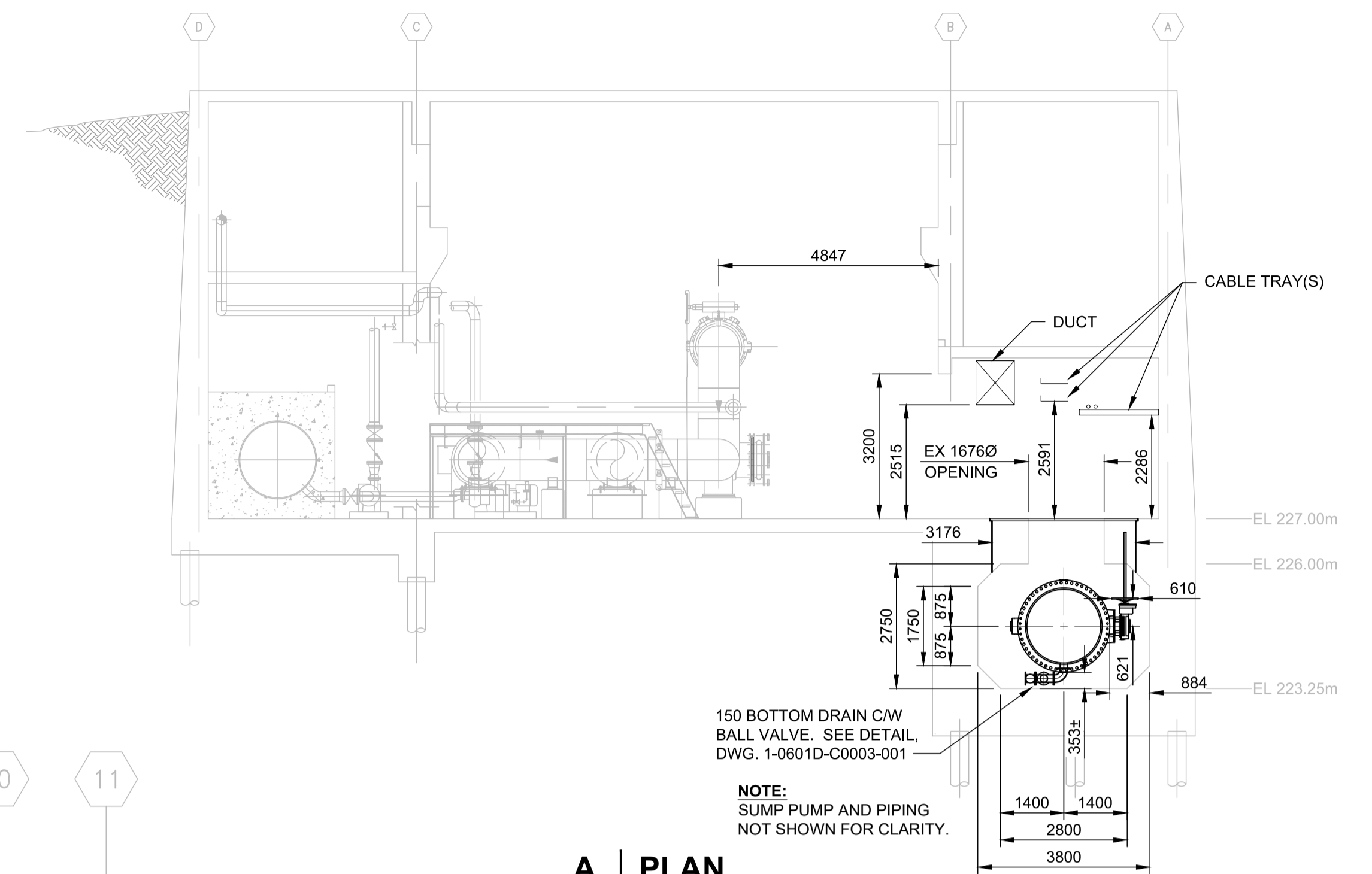


PLAN
ABOVE EL 227.00m

1:100



A PLAN
ABOVE EL 223.25m

1:100

150 BOTTOM DRAIN C/W BALL VALVE. SEE DETAIL, DWG. 1-0601D-C0003-001.

NOTE:
SUMP PUMP AND PIPING NOT SHOWN FOR CLARITY.

ENGINEERS GEOSCIENTISTS MANITOBA
Certificate of Authorization
AECOM Canada Ltd.
No. 4671 Date: 17 Aug. 2022

TENDER NO. 640-2022

NO.	REVISIONS	DATE	DESIGN	CHECK
01	ISSUED FOR CONSTRUCTION	2022-08-17	MPG	MGM
00	ISSUED FOR 90% DESIGN	2022-07-20	MPG	MGM

AECOM

DESIGNED BY: MPG
DRAWN BY: ADL
SCALE: AS NOTED
DATE: 2022-08-17

CHECKED BY: MGM
APPROVED BY: CCM
RELEASED FOR CONSTRUCTION BY: JESSICA McCOMBE
DATE: 2022-08-18

CONSULTANT NO.: C-0001

ENGINEER'S SEAL

ORIGINAL SIGNED
BY M.P.A.
GAUDREAU
August 17, 2022

THE CITY OF WINNIPEG
WATER AND WASTE DEPARTMENT
ENGINEERING SERVICES DIVISION

WINNIPEG WATER TREATMENT PLANT
DEACON BOOSTER PUMPING STATION
CIVIL
SUCTION HEADER SPLIT
GENERAL LAYOUT AND SECTION

CITY DRAWING NUMBER: 1-0601D-C0001-001
SHEET: 002
REV.: 01
SIZE: A1

METRIC
WHOLE NUMBERS INDICATE MILLIMETRES
DECIMALIZED NUMBERS INDICATE METRES