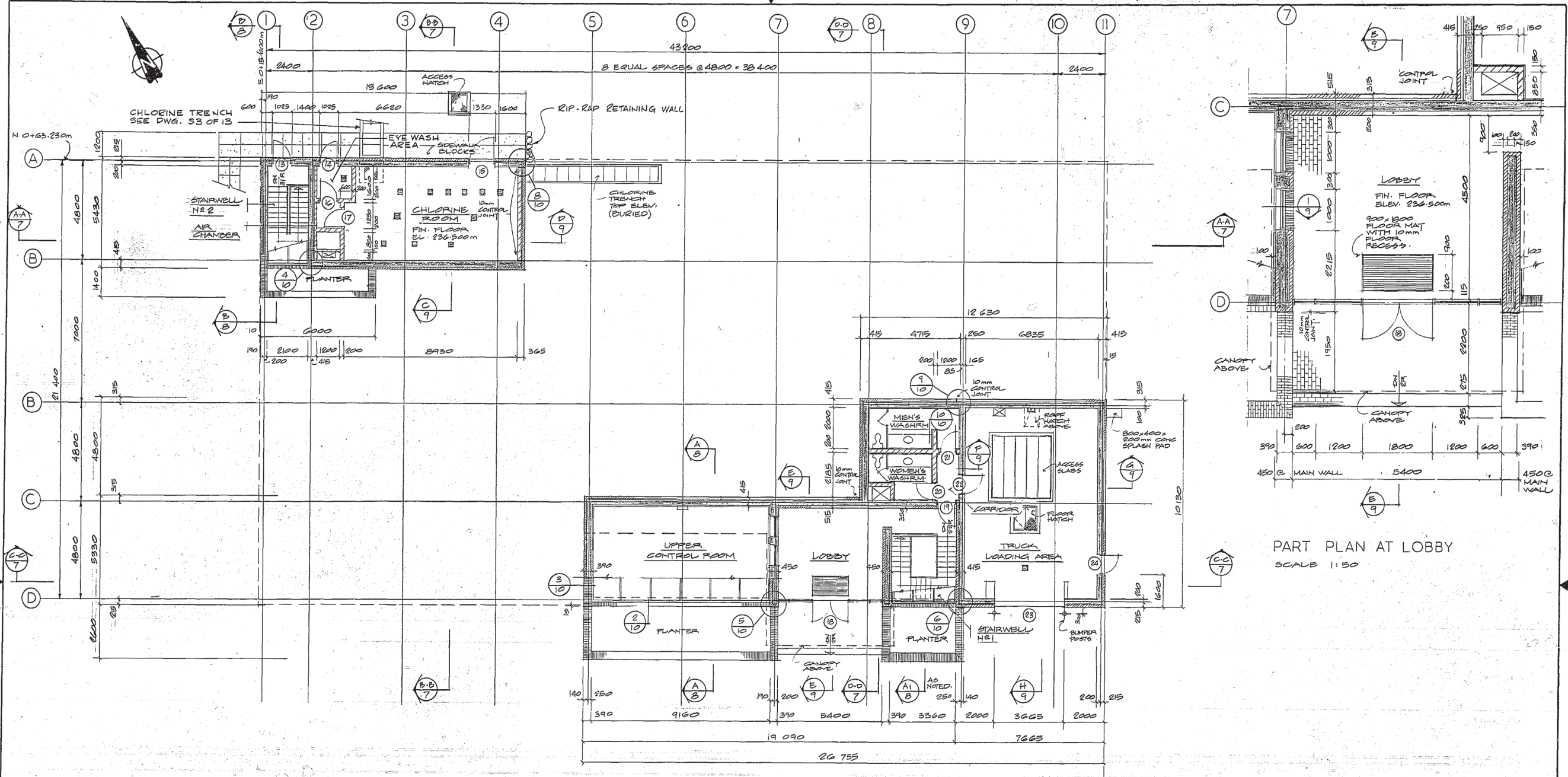


REF. or DRAWING No. _____
 DETAILS

DBP-5
 Part Plan Above Elev. 236.500 m



PLAN ABOVE FLOOR ELEV. 236.500 m
 SCALE 1:100

PART PLAN AT LOBBY
 SCALE 1:50

DIMENSIONS IN MILLIMETRES
 EXCEPT AS NOTED

COMMITTEE OF DIVISION OF ENGINEERING OFFICE	CENTRAL FILE	ENGINEERING OFFICE	DATE FILMED
	DRAWING FILE NUMBER		
GRID CO-ORDINATES MICROFILMING	WORKS & OPERATIONS DEPARTMENT		

REV.	DESCRIPTION	BY	DATE
1	REVISED TO AS BUILT	RM	APR 80

JAMES F. MACLAREN LIMITED
 CONSULTING ENGINEERS, PLANNERS AND SCIENTISTS
 WINNIPEG - LONDON - WINDSOR - WATERLOO - TORONTO

DRAWN BY: T.F. DESIGNED BY: T.F.
 CHECKED BY: C.V.W. APPROVED BY: *[Signature]* DATE

THE CITY OF WINNIPEG
 WATERWORKS, WASTE AND DISPOSAL DIVISION
DEACON BOOSTER PUMPING STATION
 ARCHITECTURAL
PART PLAN ABOVE ELEV. 236.500 m

Shapiro 13/01/81

AS BUILT



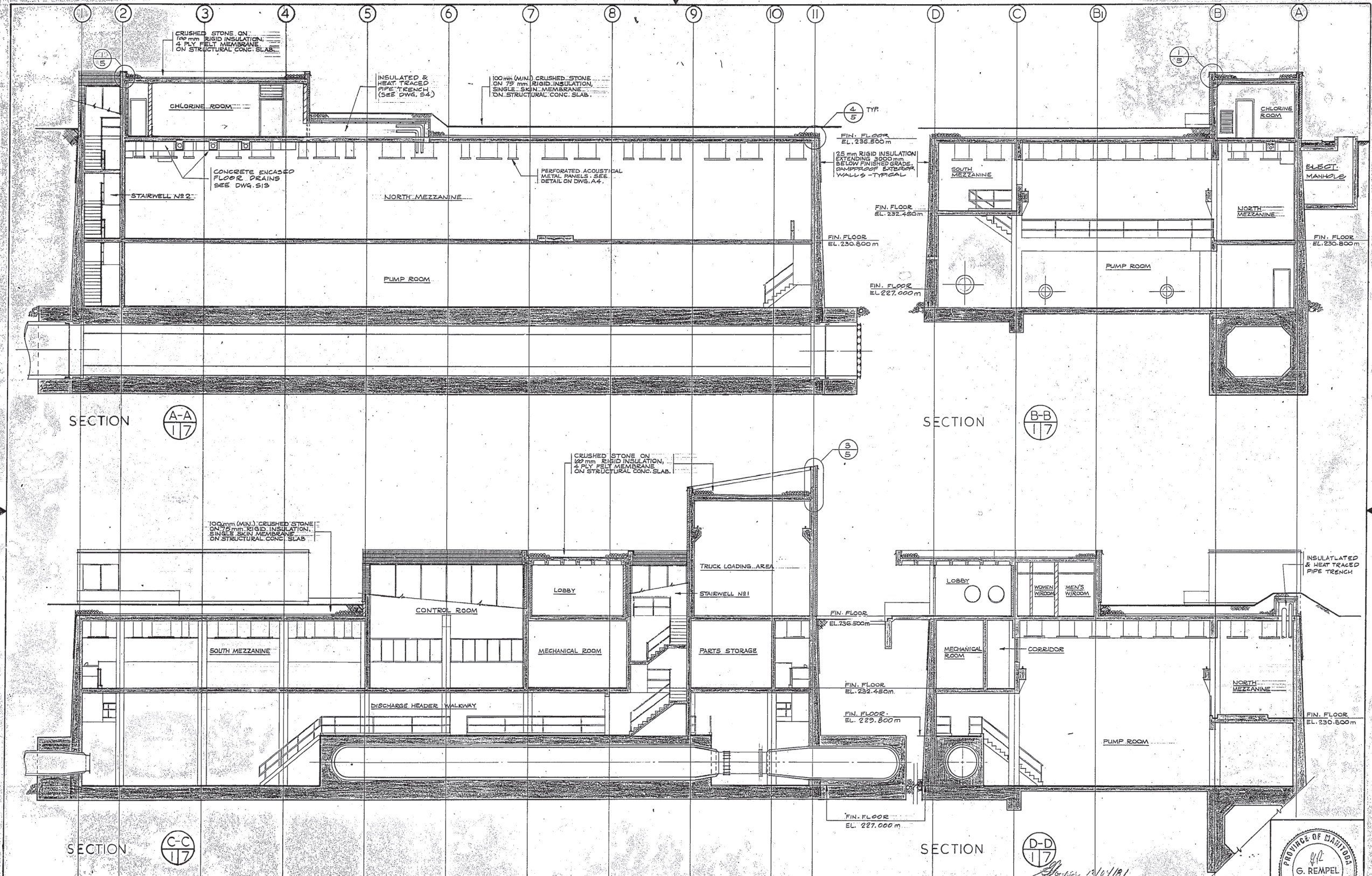
SCALE: AS SHOWN
 DATE: MAY 30, 1978
 CONSULTANT DRAWING No.
A 3 of 12
 CITY DRAWING No.
 DBP-5

BASE DWG. IV-A
 PREPARED BY T.F. 8 SEPT. 77
 UPDATED BY T.F. 7 OCT. 77
 BY T.F. 24 NOV. 77
 BY ND. 25 MAY 78

BVA

FINAL

3x



DBP - 9
 Building Cross Sections
 REF. or DRAWING No.
 DETAILS

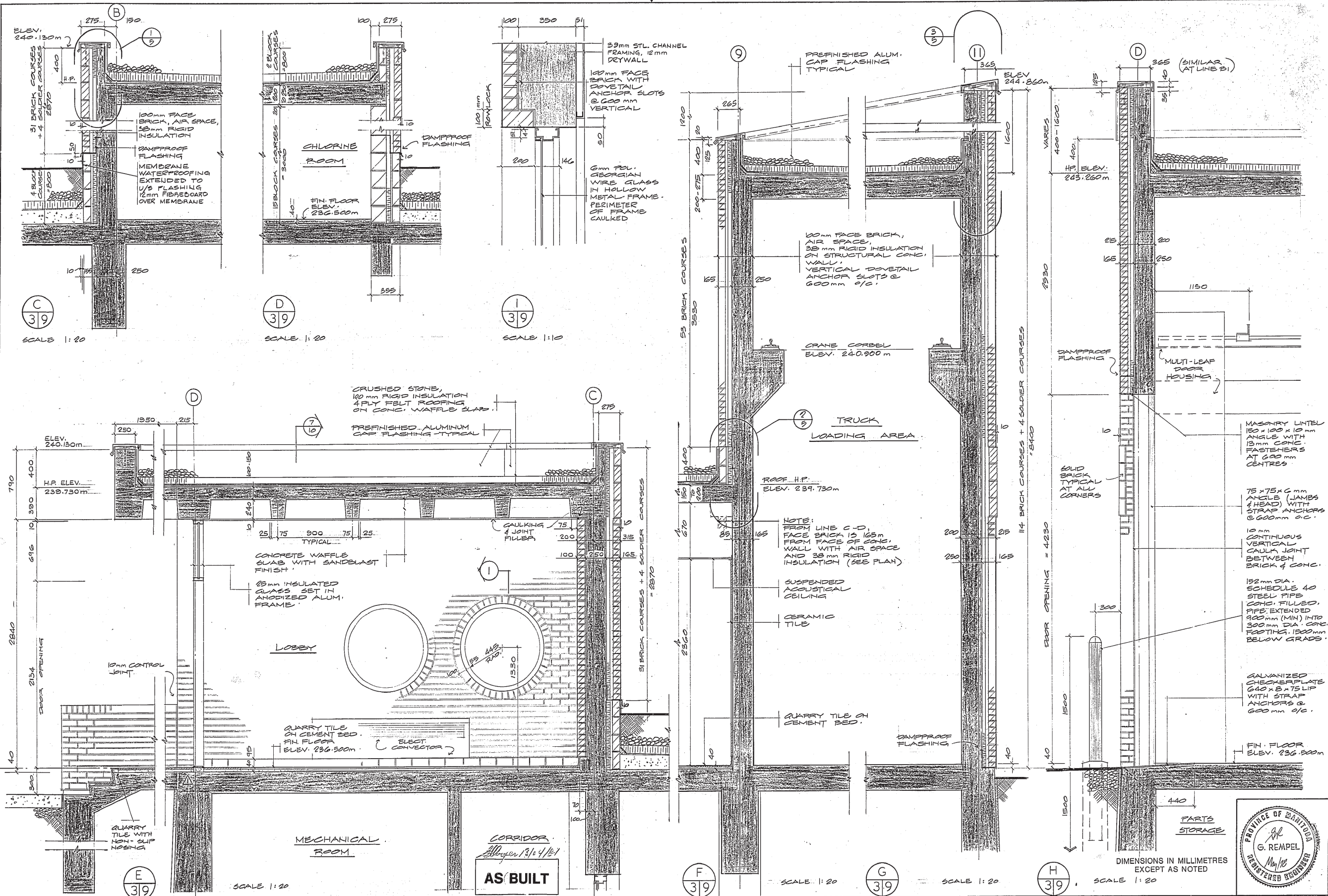
AS BUILT
 DIMENSIONS IN MILLIMETRES
 EXCEPT AS NOTED
 PROVINCE OF MANITOBA
 G. REMPEL
 REGISTERED ENGINEER

CONSULTANT UTILITY DEPARTMENT CENTRAL FILE ENGINEERING OFFICE DRAWING FILE NUMBER		SHEET NO. SIZE MEDIUM SECURITY SHEET NO. NO. OF PAGES INTERFERING NO.		DATE FILMED WORKS & OPERATIONS DEPARTMENT	
GRID CO-ORDINATES MICROFILMING		REV. 1 DESCRIPTION REVISOR DATE		DRAWN BY: T.F. DESIGNED BY: T.F. CHECKED BY: C.V.W. APPROVED BY: <i>[Signature]</i> DATE	
THE CITY OF WINNIPEG WATERWORKS, WASTE AND DISPOSAL DIVISION DEACON BOOSTER PUMPING STATION ARCHITECTURAL BUILDING CROSS SECTIONS			SCALE: 1:100 DATE: MAY 30, 1978 CONSULTANT DRAWING No. A7 of 12 CITY DRAWING No. DBP - 9		

OWENS

FILE 10819-A1-10352

REF. or DRAWING No. DBP - 11
 Sections and Details
 DETAILS



CONSULTANT	CENTRAL FILE ENGINEERING OFFICE
DIVISION OF ENGINEERING OFFICE	DRAWING FILE NUMBER
GRID CO-ORDINATES	WORKS & OPERATIONS DEPARTMENT
MICROFILMING	

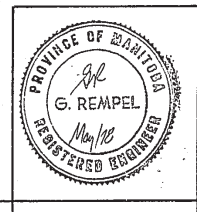
NO. OF SHEETS	DATE FILMED
SIZE	
MEDIUM	
SECTION No.	
FRAME No.	
REFERENCE No.	
REV.	DESCRIPTION
BY	DATE

JAMES F. MacLAREN LIMITED
 CONSULTING ENGINEERS, PLANNERS AND SCIENTISTS
 WINNIPEG • LONDON • WINDSOR • WATERLOO • TORONTO

DRAWN BY: T.F.
 DESIGNED BY: T.F.
 CHECKED BY: C.V.W.
 APPROVED BY: [Signature]

THE CITY OF WINNIPEG
 WATERWORKS, WASTE AND DISPOSAL DIVISION
 DEACON BOOSTER PUMPING STATION

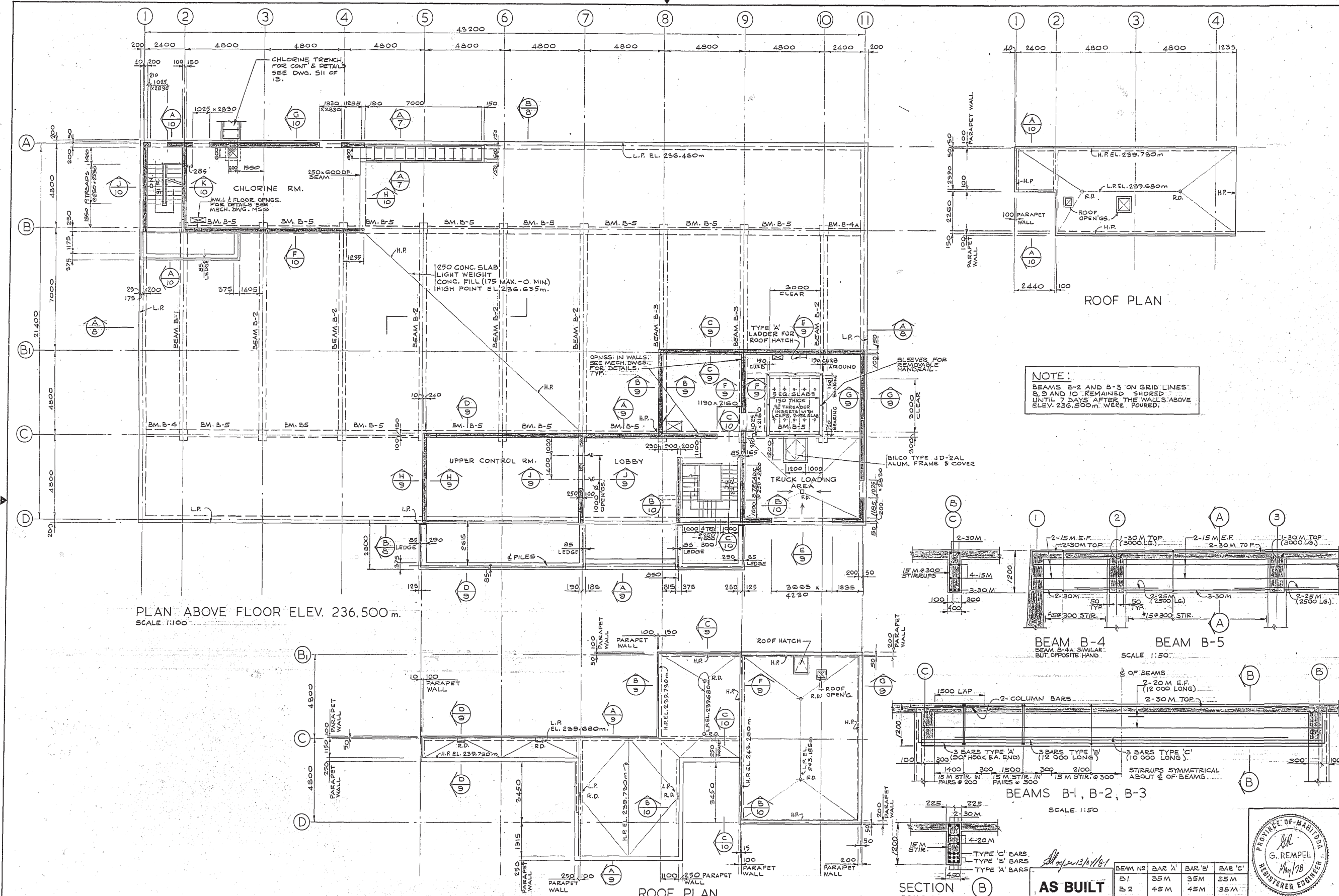
ARCHITECTURAL
 SECTIONS & DETAILS



SCALE: AS NOTED
 DATE: MAY 30, 1978
 CONSULTANT DRAWING No.
A9 of 12
 CITY DRAWING No.
 DBP - 11

DBP - 18
Plan Above Elev. 236.500 m
and Roof Plans

REF. OF DRAWING NO.
DETAILS



NOTE:
BEAMS B-2 AND B-3 ON GRID LINES B, 9 AND 10 REMAINED SHORED UNTIL 7 DAYS AFTER THE WALLS ABOVE ELEV. 236.500 m WERE POURED.

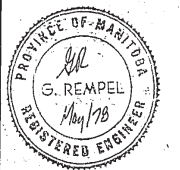
PLAN ABOVE FLOOR ELEV. 236.500 m.
SCALE 1:100

BEAM B-4 BEAM B-5
SCALE 1:50

BEAMS B-1, B-2, B-3
SCALE 1:50

AS BUILT

BEAM NO	BAR 'A'	BAR 'B'	BAR 'C'
B1	35M	35M	35M
B2	45M	45M	35M
B3	45M	45M	45M



CONTRIBUTOR OF UTILITY	CENTRAL FILE	ENGINEERING OFFICE
DRAWING FILE NUMBER	SHEET NO.	NO. OF SHEETS
GRID CO-ORDINATES	SIZE	SECURITY
MICROFILMING	WORKS & OPERATIONS DEPARTMENT	DATE FILMED

REV.	DESCRIPTION	BY	DATE
1	REVISED TO AS BUILT		MAY 80

JAMES F. MACLAREN LIMITED
CONSULTING ENGINEERS, PLANNERS AND SCIENTISTS
WINNIPEG • LONDON • WINDSOR • WATERLOO • TORONTO

DRAWN BY: M.J.M. DESIGNED BY: N.R.
CHECKED BY: C.V.W. APPROVED BY: *[Signature]* DATE

THE CITY OF WINNIPEG
WATERWORKS, WASTE AND DISPOSAL DIVISION
DEACON BOOSTER PUMPING STATION

STRUCTURAL
PLAN ABOVE ELEV. 236.500 m
AND ROOF PLANS

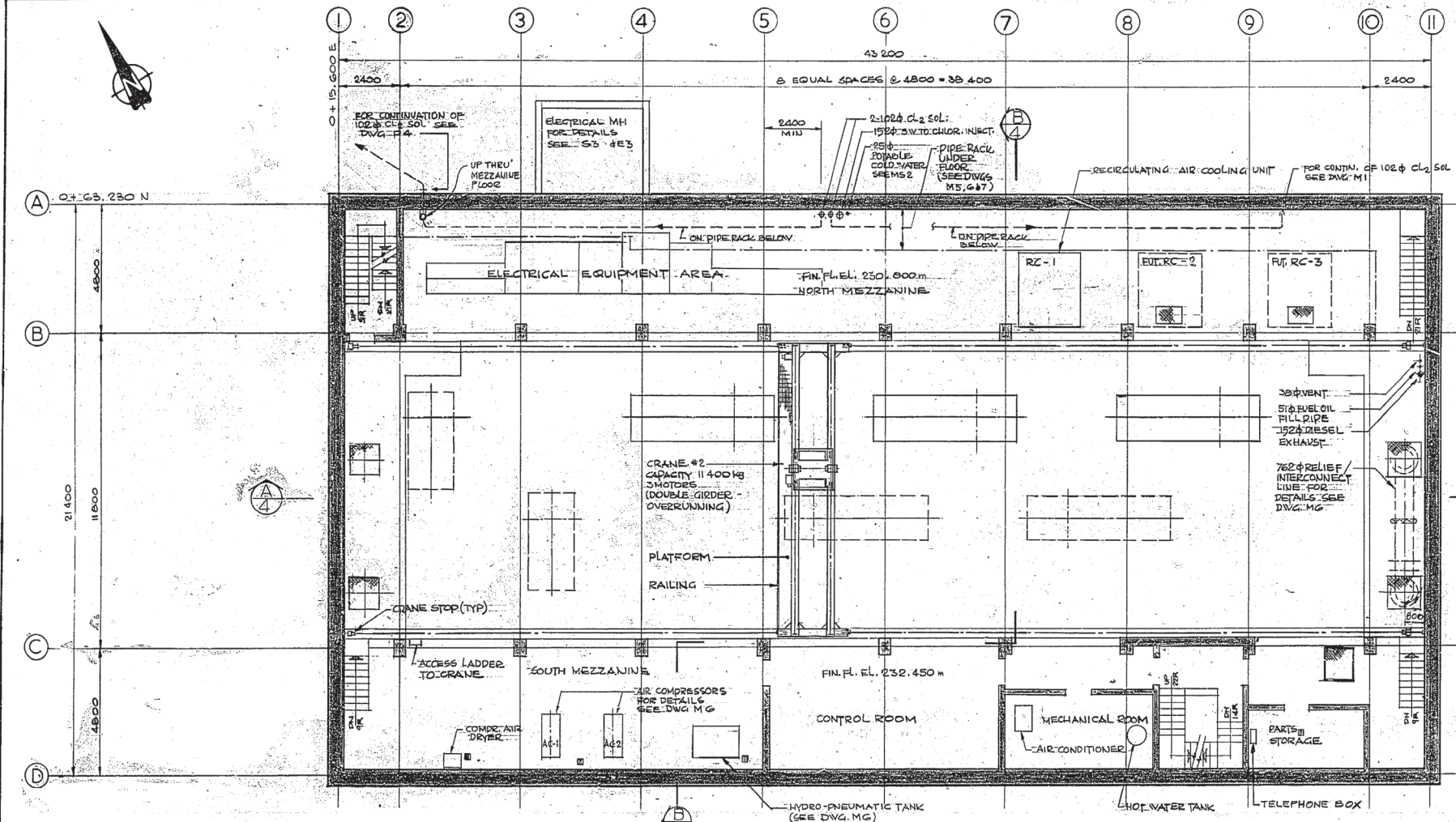
SCALE: AS SHOWN
DATE: MAY 30, 1978.
CONSULTANT DRAWING No.
S4 of 13
CITY DRAWING No.
DBP-18

FINAL

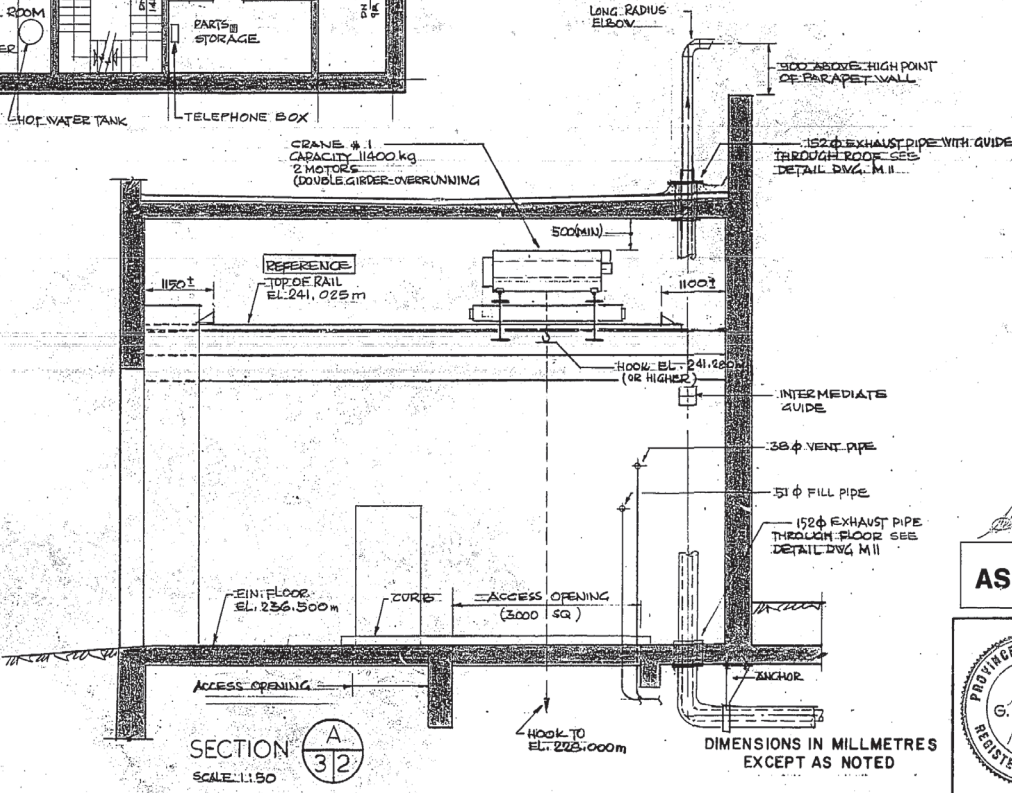
BASE DRAWING
 PREPARED BY
 UPDATE
 28 JULY 77
 7 OCT 77
 24 NOV 77

BII

STARS @ 232.450
 9 R & 183 z
 8 TH & 250 - 2000



PLAN ABOVE ELEV. 232.450 m
 SCALE: 1:100



SECTION A-A
 SCALE: 1:50

AS BUILT

PROVINCE OF MANITOBA
 G. REMPEL
 REGISTERED ENGINEER

REF. or DRAWING No. _____
 DETAILS _____

CONTRACT NO.	CENTRAL FILE	ENGINEERING OFFICE	DRAWING FILE NUMBER
NO. OF SHEETS	NO. OF SHEETS	NO. OF SHEETS	NO. OF SHEETS
DATE FILMED	DATE FILMED	DATE FILMED	DATE FILMED

REV.	DESCRIPTION	BY	DATE
1	REVISED TO AS BUILT		JUN 80

JAMES F. MACLAREN LIMITED
 CONSULTING ENGINEERS, PLANNERS AND SCIENTISTS
 WINNIPEG • LONDON • WINDSOR • WATERLOO • TORONTO

DRAWN BY: L.M.
 DESIGNED BY: G.A.A.
 CHECKED BY: G.A.A.
 APPROVED BY: _____ DATE _____

THE CITY OF WINNIPEG
 WATERWORKS, WASTE AND DISPOSAL DIVISION
DEACON BOOSTER PUMPING STATION

MECHANICAL
 PLAN ABOVE ELEV. 232.450 m

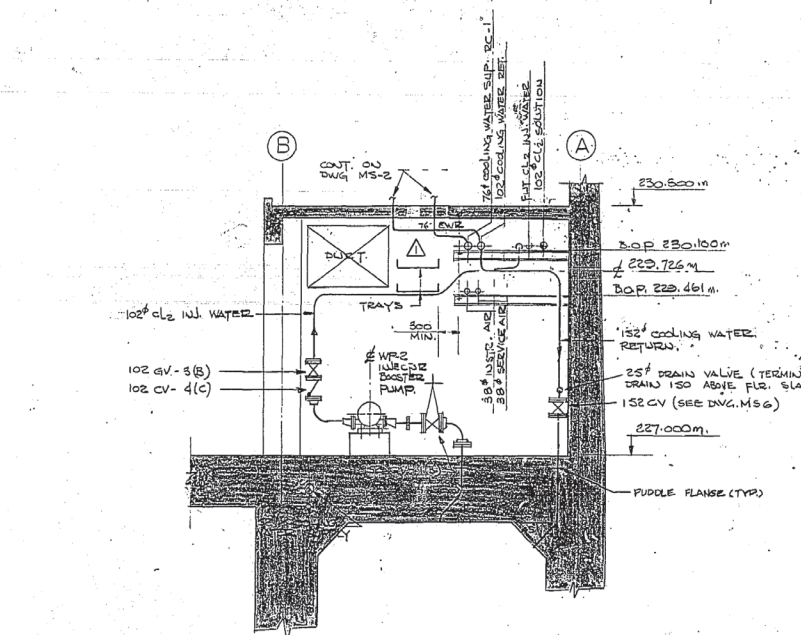
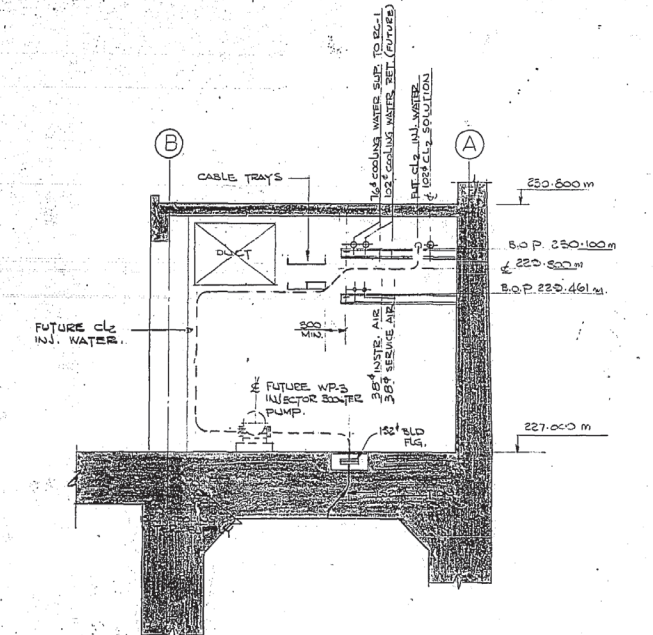
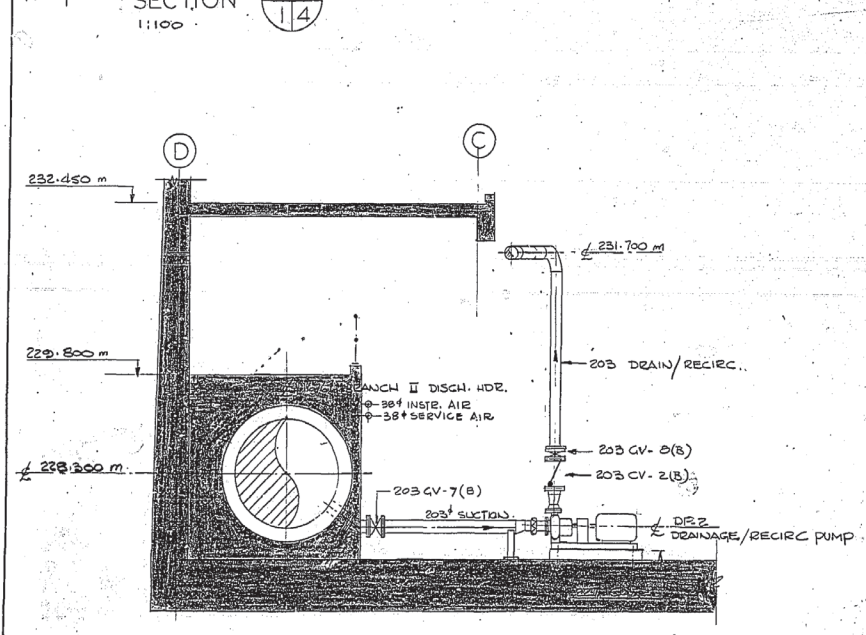
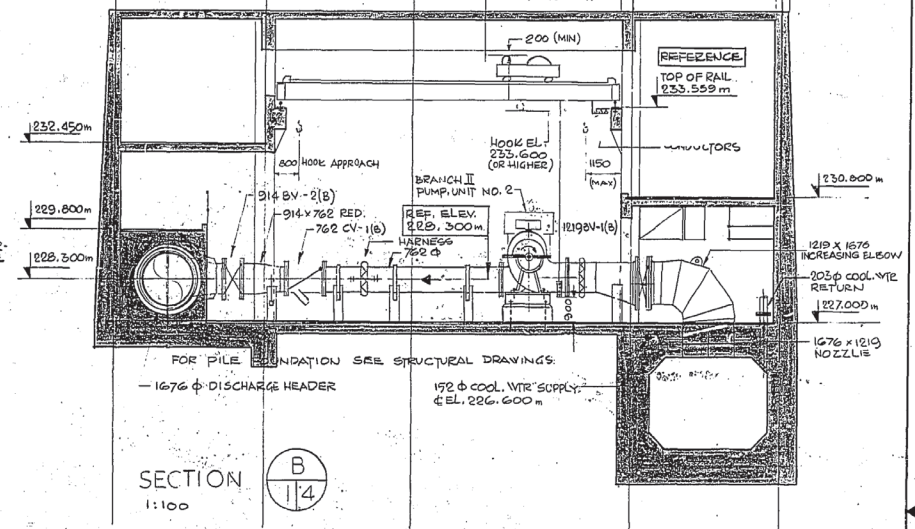
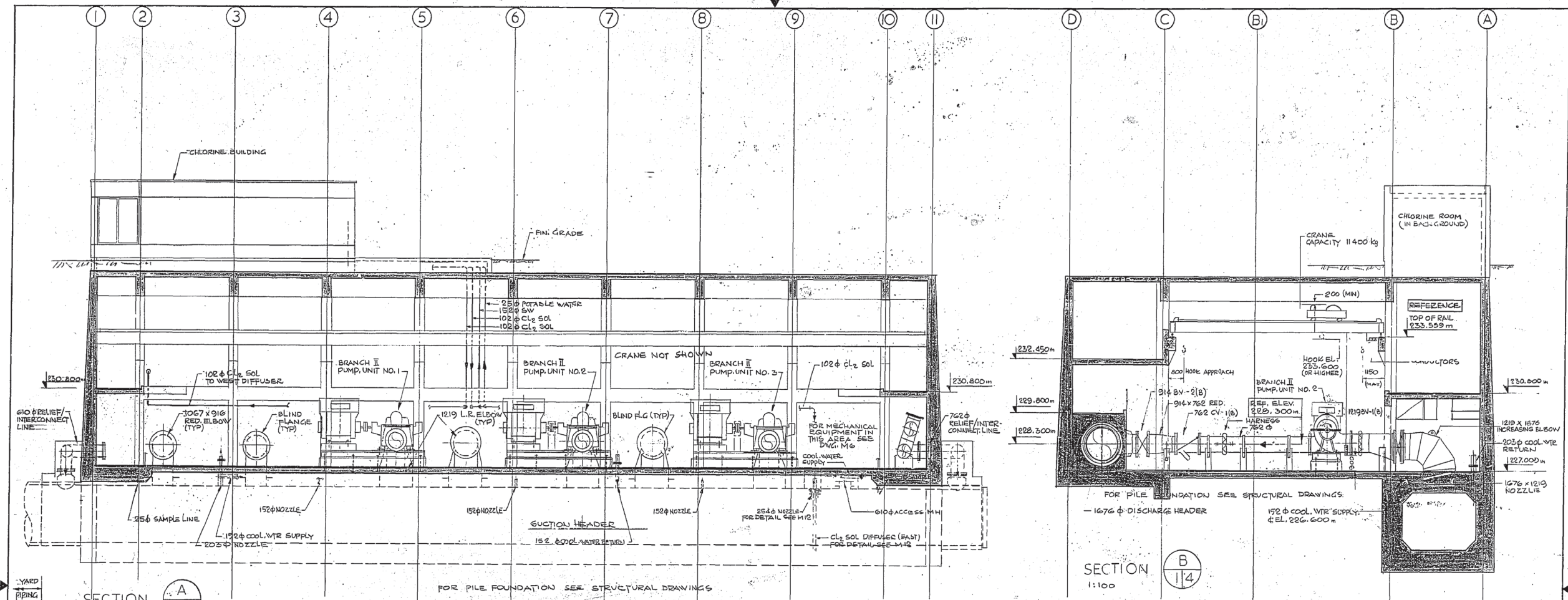
SCALE: AS SHOWN
 DATE: MAY 30, 1978
 CONSULTANT DRAWING No.
M2 of 12
 CITY DRAWING No.
 DBP-29

BASE DWG. V
 PREPARED BY LM 26 JULY 77
 UPDATED BY T.F. 7 SEPT 77
 BY T.F. 7 OCT. 77
 BY W.D. 25 MAY 78

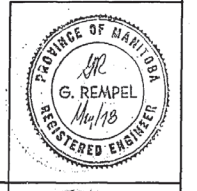
BTV

FINAL

4x



AS BUILT



SCALE: AS SHOWN
 DATE: MAY 30, 1978
 CONSULTANT DRAWING NO.
M4 of 12
 CITY DRAWING NO.
 DBP-31

CONTRACT NO.	CENTRAL FILE	ENGINEERING OFFICE	SHEET NO.	DATE FILMED
DIVISION	DRAWING FILE NUMBER		NO. OF SHEETS	
UTILITY			SIZE	
OFFICE			MEDIUM	
			SECURITY	
			FRAME NO.	
			NO. OF FRAMES	
			REFERENCE NO.	

REV.	DESCRIPTION	BY	DATE
1	REVISED TO AS BUILT	LM	JUN 80

JAMES F. MACLAREN LIMITED
 CONSULTING ENGINEERS, PLANNERS AND SCIENTISTS
 WINNIPEG - LONDON - WINDSOR - WATERLOO - TORONTO

DRAWN BY: L.M./C.S. DESIGNED BY: G.A.A.
 CHECKED BY: G.A.A. APPROVED BY: [Signature] DATE

THE CITY OF WINNIPEG
 WATERWORKS, WASTE AND DISPOSAL DIVISION
DEACON BOOSTER PUMPING STATION

MECHANICAL SECTIONS

REF. or DRAWING NO
 DETAILS

WENNS