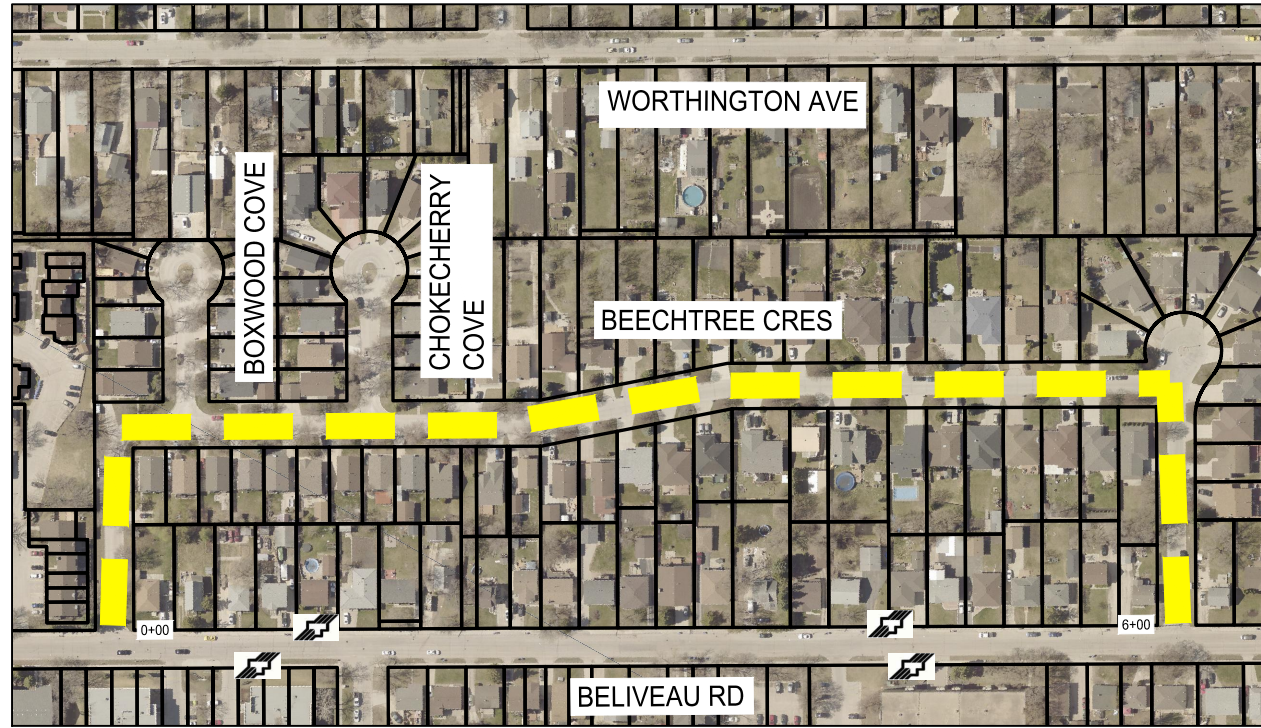


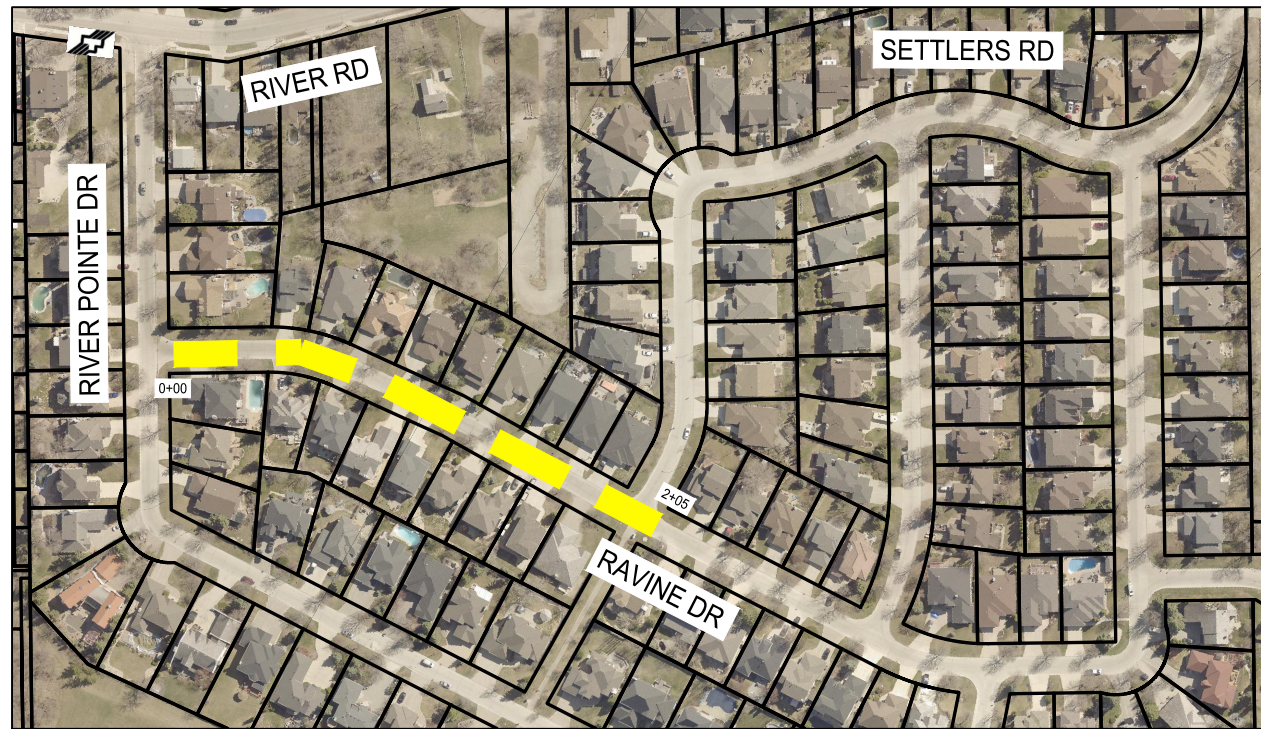
Jul 21, 2022 - 6:08am
 P:\2022\221-03150-00 - 2022 TBO & UV\4.0 Tech + Prof Services\4.11 Highways_Bridges\08 WSP Drawings\221-03150-00 Plan.dwg - Job: 541-2022_Drawing_221-03150-00-11-RB



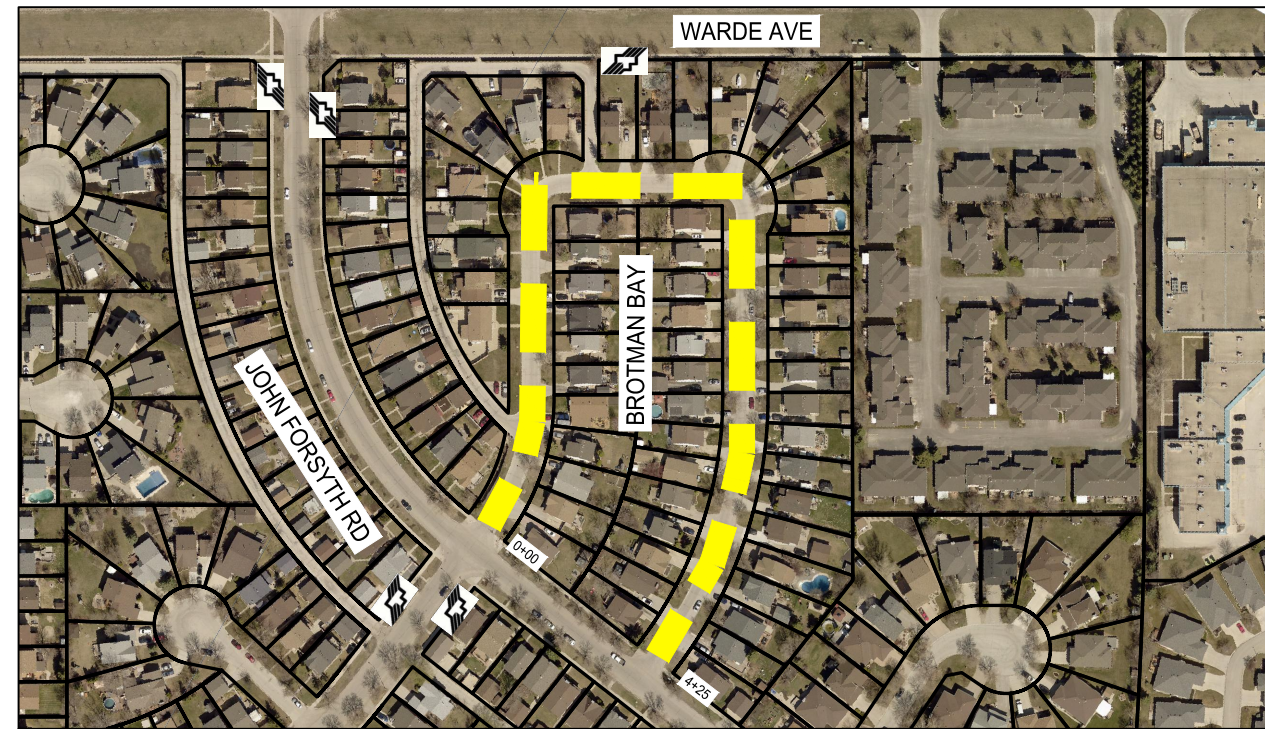
BEECHTREE CRES - BELIVEAU RD TO BELIVEAU RD
1:1500



**GLENTHORNE CRES - DARWIN ST TO GRENDELL AVE AND
WOODLAWN AVE TO GRENDELL AVE**
1:1500



RAVINE DR - RIVER POINTE DR TO SETTLERS RD
1:1500



BROTMAN BAY - JOHN FORSYTH RD TO JOHN FORSYTH RD
1:1500

FOR TENDER

LEGEND

	BUS ROUTE
	SCHOOL LOCATION
	LIMIT OF CONSTRUCTION

METRIC
 WHOLE NUMBERS INDICATE MILLIMETRES
 DECIMALIZED NUMBERS INDICATE METRES

LOCATIONS APPROVED UNDERGROUND STRUCTURES

SIGNED BY:	DATE
SUPV U/G STRUCTURES	

LOCATION OF UNDERGROUND STRUCTURES AS SHOWN ARE BASED ON THE BEST INFORMATION AVAILABLE BUT NO GUARANTEE IS GIVEN THAT ALL EXISTING UTILITIES ARE SHOWN OR THAT THE GIVEN LOCATIONS ARE EXACT CONFIRMATION OF EXISTENCE AND EXACT LOCATION OF ALL SERVICES MUST BE OBTAINED FROM THE INDIVIDUAL UTILITIES BEFORE PROCEEDING WITH CONSTRUCTION.

NO.	REVISIONS	DATE	BY
B	ISSUED FOR TENDER	21/07/22	AB
A	DETAILED DESIGN REVIEW	15/07/22	AB

wsp

DESIGNED BY	MS	CHECKED BY	VM
DRAWN BY	TW	APPROVED BY	VM
HOR. SCALE	VARIES	RELEASED FOR CONSTRUCTION	
VERTICAL	-	DATE	JULY-2022

ENGINEER'S SEAL

CONSULTANT ACAD DWG. NO.
221-03150-00-11

THE CITY OF WINNIPEG
 PUBLIC WORKS DEPARTMENT
 ENGINEERING SERVICES DIVISION

2022 THIN BITUMINOUS OVERLAY (TBO) PROGRAM

BEECHTREE CRES, GLENTHORNE CRES, RAVINE DR,
 BROTMAN BAY
 ASPHALT OVERLAY

CITY DRAWING NUMBER	SHEET 11 OF 12
BID NO.	541-2022

NOTE:
 These design documents are prepared solely for the use by the party with whom the design professional has entered into a contract and there are no representations of any kind made by the design professional to any party with whom the design professional has not entered into a contract.