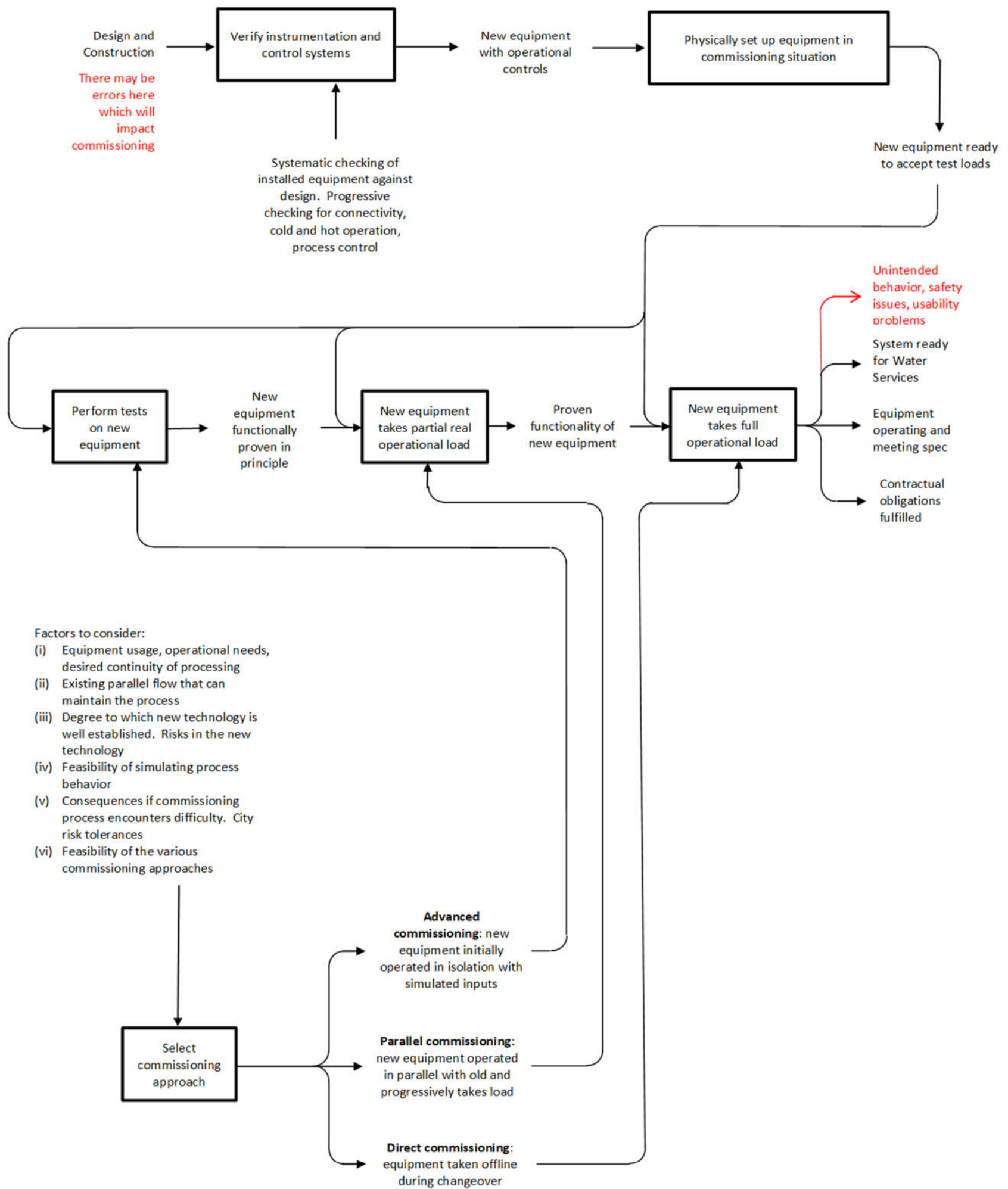


## APPENDIX J – COMMISSIONING STRATEGIES



Decision factors affecting the commissioning approach:

- (i) **Advanced commissioning** is appropriate where technology risk is high, operational continuity is required, and timing constraints are tight.
- (ii) **Parallel commissioning** is appropriate where operational continuity is required and timing constraints are tight.
- (iii) **Direct commissioning** is appropriate where technology risk is low, operational continuity can be disrupted, and timing constraints are loose.