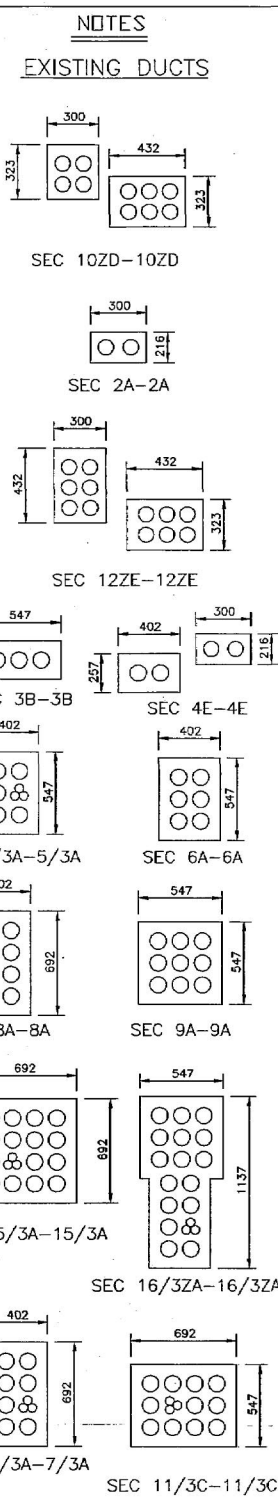
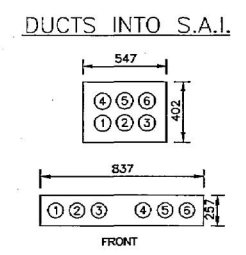
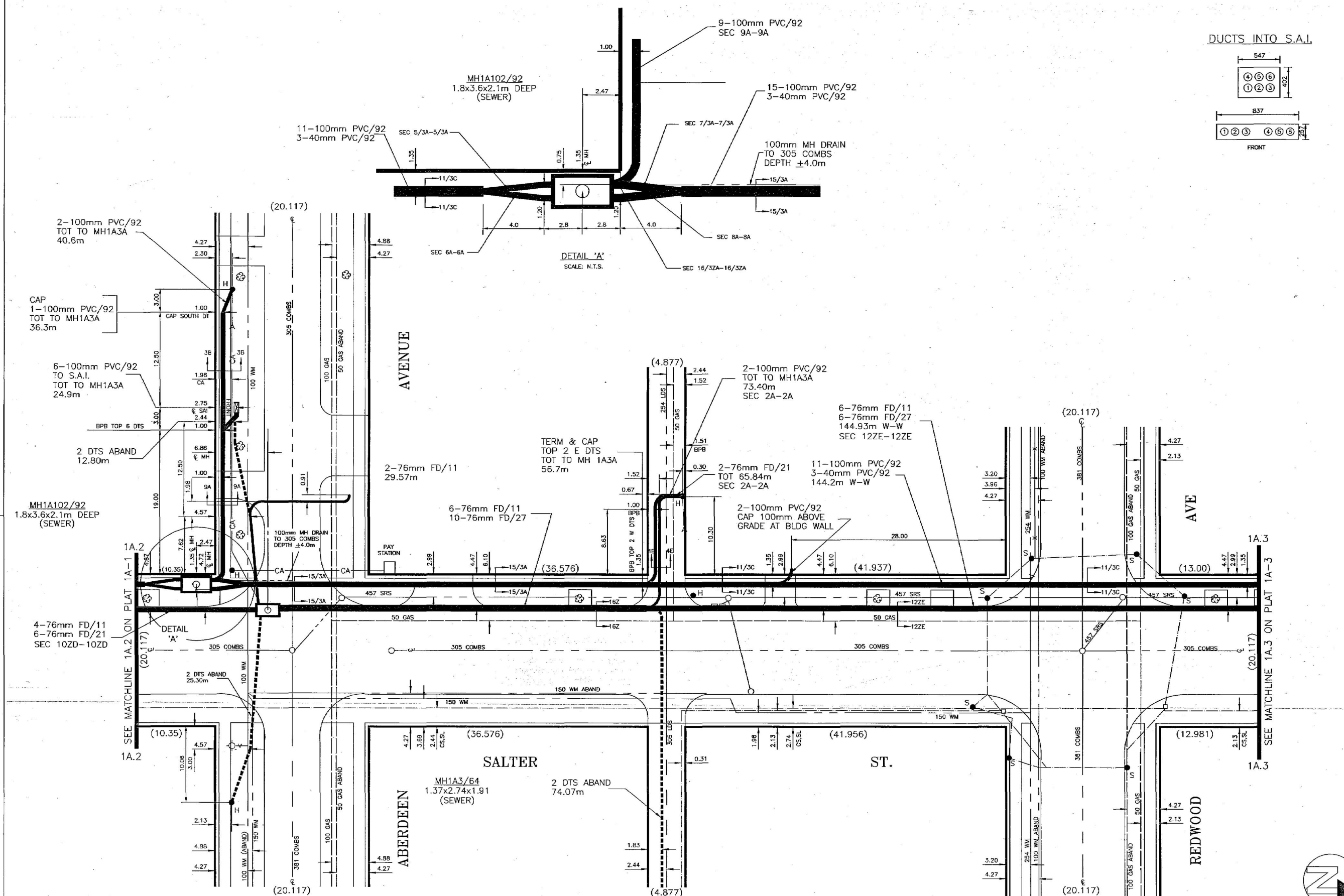


## **APPENDIX 'E'**

# **REFERENCE DRAWINGS FOR BELLMTS AND WINNIPEG SCHOOL DIVISION FIBRE NETWORK**



**LEGEND**

	PROPOSED M.T.S. M.HOLE		5-100mm DUCTS		WATER HYDRANT
	EXISTING M.T.S. M.HOLE		3-40mm DUCTS		VALVE
	PROPOSED M.T.S. DUCTS		EASEMENT BOUNDARY		SEWER M.HOLE/CATCH BASIN
	EXISTING M.T.S. DUCTS		GAS		SURVEY MONUMENT
	EXISTING M.T.S. BURIED CA		WATER		
	PILE G.H.S. HYDRANT LIGHT		SEWER		
	M.T.S. PEDestal		STEAM HEAT		
	HYDRO TRANSFORMER		HYDRO DUCTS		
			HYDRO BURIED CABLE		
			SIGNALS		
			PAVEMENT/SIDEWALK		

**LOCATION OF UNDERGROUND STRUCTURES**  
AS SHOWN ARE BASED ON BEST INFORMATION AVAILABLE, BUT NO GUARANTEE IS GIVEN THAT ALL EXISTING UTILITIES ARE SHOWN AND EXACT LOCATIONS OF ALL UNDERGROUND INCLUDING SERVICE CONNECTIONS MUST BE CHECKED WITH THE UTILITY CONCERNED BEFORE PROCEEDING WITH CONSTRUCTION.

**BENCH MARK**  
"T" IN M.T.S. WEST END OF MH1A2A 22.0m N OF THE N. PL. OF ALFRED AVENUE AND 4.0m E OF THE W. PL. OF SALTER STREET.  
ELEVATION - 231.471m

**LTD. PLANS:**  
28  
437  
867  
949  
21234

**CALL BEFORE YOU DIG -- CHECK FOR**  
• PIPELINES CARRYING OIL, GAS, LIQUID NATURAL GAS, LIQUID PROPANE, STEAM, DRINKING/IRRIGATION WATER, SEWAGE, SEPTIC FIELDS/TANKS  
• BURIED ELECTRICAL, RAILWAY/TRAFFIC SIGNAL, TELEGRAPH LINES, DUCT FORMATIONS, M.T.S. FDS, TV, VF CABLES ETC.

**UNDERGROUND STRUCTURES**

ORIGINATOR:

DRAWN BY: J. PATTON

CHECKED:

APPROVAL NUMBER:

MANAGER - U.G. STRUCTURES

DATE:

93		REVISED	93/04/27
92	91902	92-57	
	WU4-21118 UG-13-495 UG-3788 (50)		89/11/09
63	RO 21133		
YR. AUTHORITY	REVISIONS	CORRECTED	

**MTS**  
With you all the way!

EXCHANGE  
ST. JOHNS

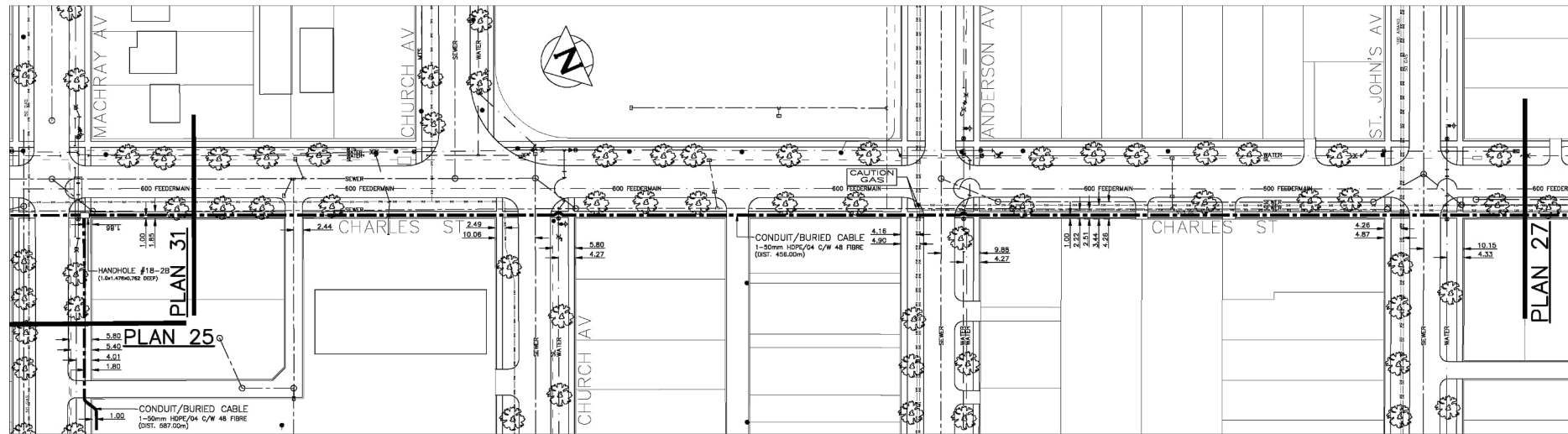
LOCATION  
ON SALTER STREET FROM  
ABERDEEN AVE. TO REDWOOD AVE.

DATE 92/02/28	U.G. CONDUIT
SCALE VERT. 1:50	PLAT NO.
HORIZ. 1:250	AB
SHEET OF SHEETS	1A-2

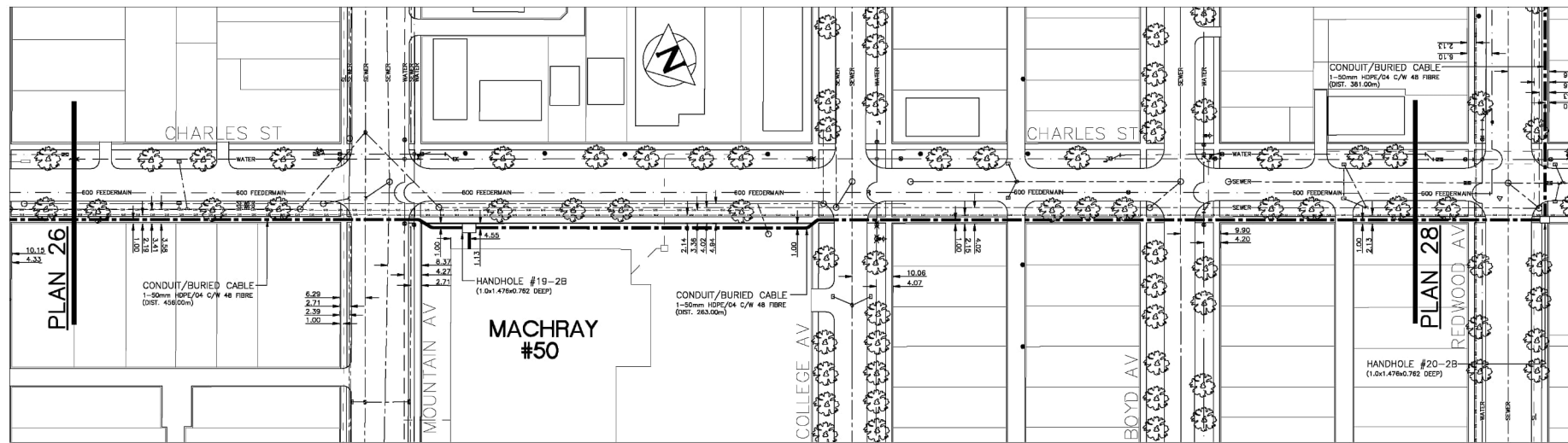
UG5-



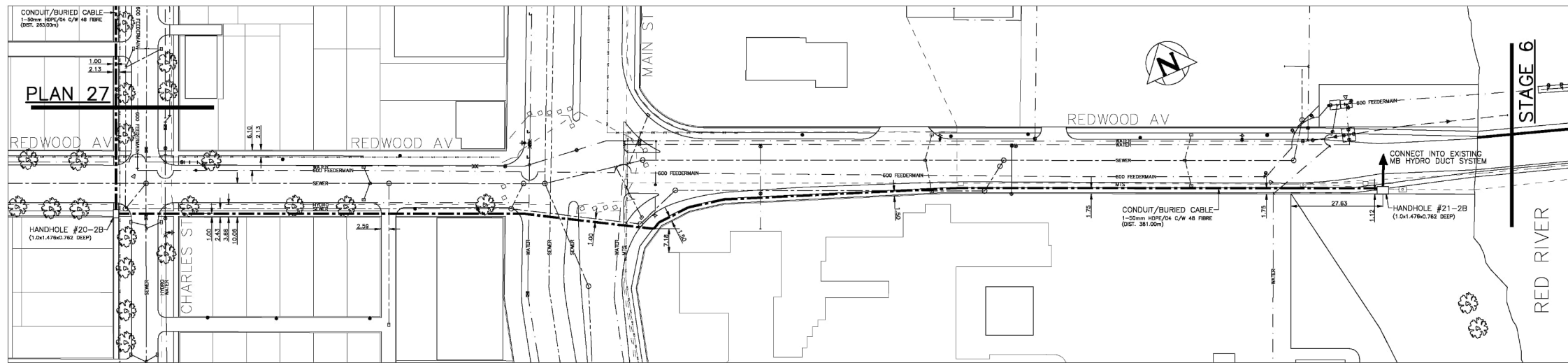




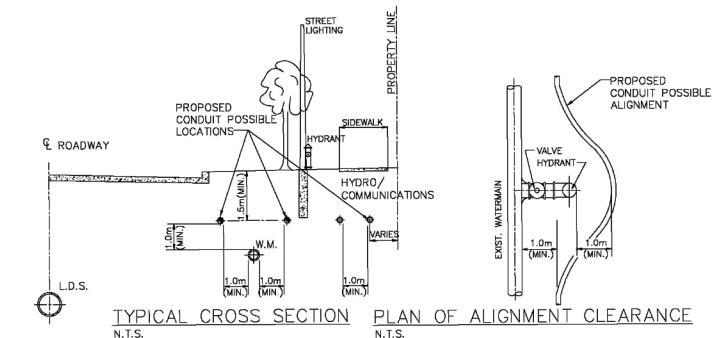
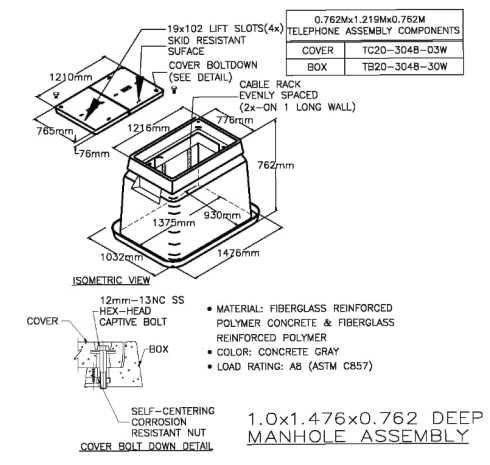
PLAN 26



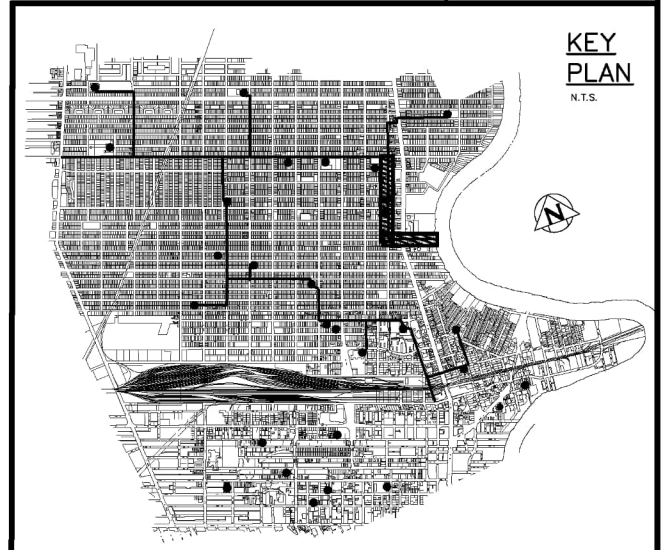
PLAN 27



PLAN 28



"AS BUILT"  
AS PER CONSTRUCTION  
AUGUST 2009



200 WM	WATERMAIN	---	STREET LIGHT		
⊕	HYDRANT	---	MTS/TRAFFIC SIGNALS/CABLE		HANDHOLE
⊙	VALVE	50 GAS	GAS		CONDUIT
525 LDS	LAND DRAINAGE SEWER		HYDRO		
375 WWS	WASTEWATER SEWER		SURVEY BAR		
○	MANHOLE	---x---	FENCE		
□	CATCH BASIN	• H • T	POLE - HYDRO, MTS		
▽	CURB INLET	⊕	CURB STOP		
+	JUNCTIONS	⊕	GUY ANCHOR		
---	CULVERT	⊕	LIGHT STANDARD		
⊕	ANODE	⊕	TREE		
---	EXISTING	---	EXISTING		LEGEND-PLAN

UNDERGROUND NOTE:  
LOCATION OF UNDERGROUND STRUCTURES AS SHOWN ARE BASED ON THE BEST INFORMATION AVAILABLE, BUT NO GUARANTEE IS GIVEN THAT ALL EXISTING UTILITIES ARE SHOWN, AND EXACT LOCATIONS OF ALL UNDERGROUND INCLUDING SERVICE CONNECTIONS, MUST BE CHECKED WITH THE UTILITY CONCERNED BEFORE PROCEEDING WITH CONSTRUCTION.

CALL BEFORE YOU DIG - CHECK FOR PIPELINES CARRYING OIL, GASOLINE, NATURAL GAS, LIQUID PROPANE, STEAM, DRINKING/IRRIGATION WATER, SEWAGE, SEPTIC FIELDS/TANKS, BURED ELECTRICAL, RAILWAY/TRAFFIC SIGNAL, TELEGRAPH LINES; MTS FOIS, TV, VF DUCT FORMATIONS; CABLES ETC.

METRIC  
WHOLE NUMBERS INDICATE MILLIMETRES  
DECIMALIZED NUMBERS INDICATE METRES

ENGINEERS SEAL

**Crown Utilities Ltd.**  
Specializing in Underground Utility Installations

DESIGNED BY N. A.  
DRAWN BY A. G.  
HOR. SCALE: 1:750  
DATE

CHECKED BY N. A.  
APPROVED BY  
RELEASED FOR CONSTRUCTION  
DATE

WINNIPEG SCHOOL DIVISION NO.1  
DARK FIBER NETWORK

STAGE 2-B  
PLANS 26, 27, & 28  
MACHRAY AV, CHARLES ST,  
& REDWOOD AV

SHEET 9 OF 10  
DRAWING NO.