

APPENDIX 'C'

PHASING & SIGNAGE PLAN

PHASING & SIGNAGE PLAN FIGURE INDEX:

- F100 GENERAL SITE PLAN
- F101 REDWOOD/SALTER INTERSECTION
- F102 PHASE II: STAGE I - AIKINS & CHARLES INTERSECTIONS
- F102 PHASE II: STAGE II - AIKINS & CHARLES INTERSECTIONS
- F104 REDWOOD/MAIN INTERSECTION

PHASING:

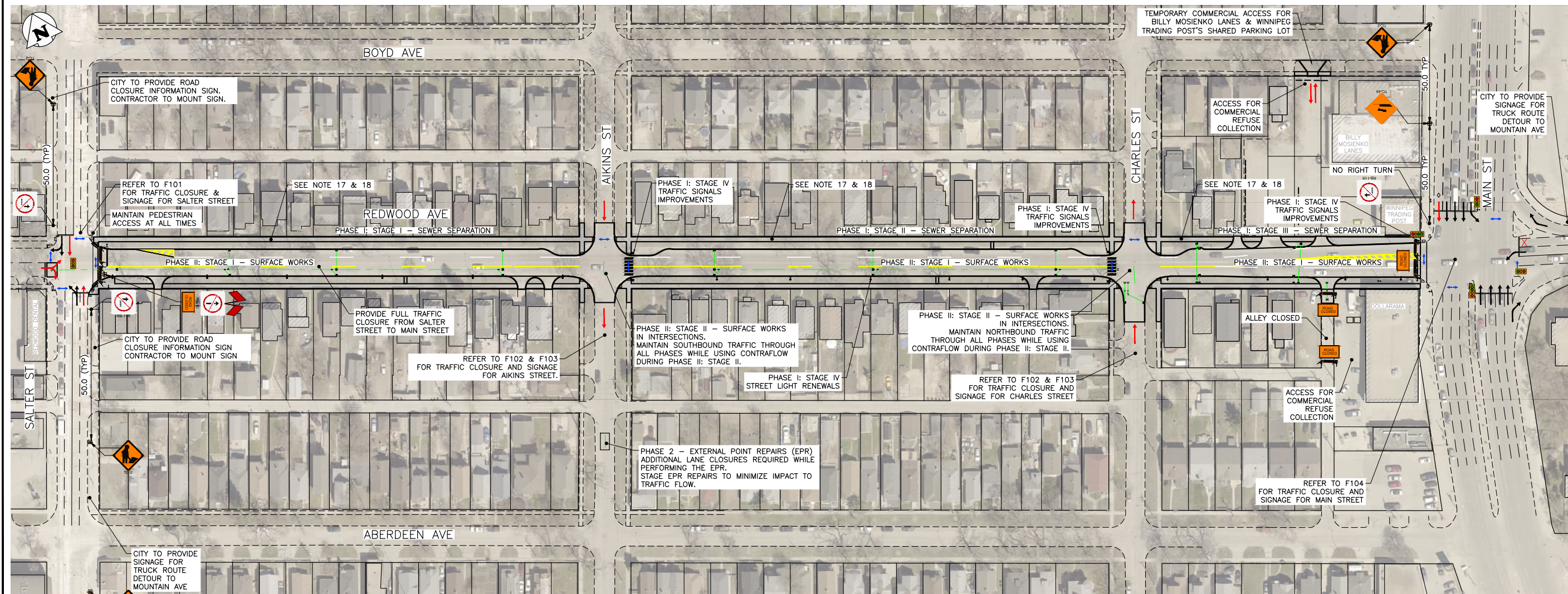
- PHASE I: SEWER SEPARATION
 - STAGE I: SEWER SEPARATION FROM SALTER ST TO AIKINS ST
 - STAGE II: SEWER SEPARATION FROM AIKINS ST TO CHARLES ST
 - STAGE III: SEWER SEPARATION FROM CHARLES ST TO MAIN ST
 - STAGE IV: STREET LIGHTING RENEWAL & TRAFFIC SIGNALS IMPROVEMENTS
- PHASE II: SURFACE WORKS
 - STAGE I: SURFACE WORKS MAINLINE
 - STAGE II: SURFACE WORKS INTERSECTIONS & TIE-INS
 - STAGE III: RESTORATION

CITY OF WINNIPEG: TRAFFIC MANAGEMENT BRANCH:

1. CITY OF WINNIPEG TRAFFIC MANAGEMENT BRANCH & THE TRAFFIC SERVICES BRANCH SHALL BE RESPONSIBLE FOR PROVIDING & MOUNTING INFORMATIONAL SIGNS FOR CLOSURE DURATION, TRUCK ROUTE DETOURS, & OTHER SIGNS OF THAT NATURE.
2. CONTRACTOR TO MOUNT SIGNS IF REQUIRED PROVIDED BY THE TRAFFIC SERVICES BRANCH ON EXISTING SIGN POLES OR PROVIDE TEMPORARY MOUNTING POLES AS REQUIRED AT EACH SPECIFIED SIGN LOCATION.

NOTES:

1. ALL TEMPORARY TRAFFIC CONTROL TO BE IN ACCORDANCE WITH THE LATEST MANUAL OF TEMPORARY TRAFFIC CONTROL ON CITY STREETS (MTTC) AT TENDER.
2. PERFORM WORK IN PHASES & STAGES TO MINIMIZE IMPACT TO TRAFFIC FLOW AND ACCESS TO RESIDENCES.
3. NOT ALL REQUIRED SIGNAGE IS SHOWN FOR EACH PHASE & SUB-PHASE. ADDITIONAL SIGNAGE TO PROVIDED IN ACCORDANCE WITH THE MTTC.
4. THE PERMANENT POSTED SPEED LIMIT OF 50 KM/HR SHALL BE USED FOR ALL TAPER LENGTHS AND OTHER CRITERIA IN THE MTTC.
5. CONTRACTOR SHALL SUBMIT THE PEDESTRIAN ACCESSIBILITY PLAN FOR REVIEW & ACCEPTANCE BY THE CONTRACT ADMINISTRATOR.
6. CONTRACTOR SHALL BE RESPONSIBLE FOR THE SUPPLY, PLACEMENT & MAINTENANCE OF ALL TEMPORARY TRAFFIC CONTROL SIGNAGE IN ACCORDANCE WITH THE TENDER.
7. CONTRACTOR SHALL BE RESPONSIBLE FOR ALL PERMITS.
8. ALL LANE CLOSURE REQUESTS MUST BE SUBMITTED THROUGH THE CONTRACT ADMINISTRATOR & ARE SUBJECT TO THE APPROVAL OF THE TRAFFIC MANAGEMENT BRANCH.
9. CONTRACTOR TO PROVIDE FLAGPERSONS IN ACCORDANCE WITH THE MTTC WHEN MOVING MATERIALS OR EQUIPMENT INTO OR OUT OF TRAFFIC.
10. CONTRACTOR SHALL PROVIDE FLAGPERSONS DURING ALL ASPHALT PLACEMENT AT THE PROJECT LIMITS TO MINIMIZE IMPACT TO TRAFFIC.
11. WHEN FLAGPERSONS ARE PRESENT, FLAGPERSON SIGNAGE MUST BE PLACED IN ACCORDANCE WITH THE MTTC.
12. WHEN FLAGPERSONS ARE NOT PRESENT, THE FLAGPERSON SIGNAGE MUST BE REMOVED OR HIDDEN.
13. PROVIDE TEMPORARY RAMPS & CROSSING WHERE DIRECTED BY CONTRACT ADMINISTRATOR & IN ACCORDANCE WITH THE ACCESSIBILITY PLAN FOR PEDESTRIAN CROSSINGS WHILE PERFORMING WORK IN THE INTERSECTIONS AND APPROACHES.
14. INSTALL WARNING FLAGS IN ACCORDANCE WITH MTTC 3.07.04 ON THE FIRST WARNING SIGN IN EACH LANE DROP TAPER.
15. WHERE A LANE IS REQUIRED TO BE CLOSED ON SALTER STREET OR MAIN STREET TO PERFORM THE WORK ON THE TIE-IN DURING OFF PEAK-HOURS, A TEMPORARY TRANSIT LANDING WILL BE REQUIRED FOR THE TEMPORARY TRANSIT STOP RELOCATION.
16. CONTRACTOR TO MONITOR TEMPORARY SIGNAGE FOR THE DURATION OF THE PROJECT & MODIFY AS NEEDED FOR EACH STAGE OF THE WORKS. CONTRACTOR TO REMEDY ANY SIGNAGE DEEMED INSUFFICIENT OR INCORRECT AS DIRECTED BY THE CONTRACT ADMINISTRATOR.
17. STAGE SIDEWALK WORK SUCH THAT PEDESTRIAN ACCESS IS MAINTAINED ALONG ONE SIDE OF REDWOOD AVE AT ALL TIMES.
18. PROVIDE SIDEWALK CLOSED & DETOUR SIGNAGE IN ACCORDANCE WITH THE MTTC.



STAGING & SIGNAGE

SCALE: NTS

PROPERTY LIMITS DELINEATION
 DELINEATION OF PROPERTY LIMITS AS SHOWN ON THIS DWG DOES NOT REPRESENT A "LEGAL SURVEY". KGS GROUP MAKES NO REPRESENTATION OR WARRANTY AS TO THE ACCURACY OF PROPERTY LIMITS DELINEATED ON THIS DWG, NOR ON THE DIMENSIONAL ACCURACY OF DWG FEATURES RELATIVE TO THOSE PROPERTY LIMITS.

METRIC
 WHOLE NUMBERS INDICATE MILLIMETRES
 DECIMALIZED NUMBERS INDICATE METRES

ISSUED FOR TENDER
 NOT TO BE USED FOR CONSTRUCTION

NO.	REVISIONS	DATE	BY
0	ISSUED FOR TENDER	22/11/22	GES

THE CITY OF WINNIPEG
 PUBLIC WORKS DEPARTMENT
 ENGINEERING DIVISION

PROJECT TITLE
2023 REDWOOD RECONSTRUCTION: SALTER TO MAIN

PHASING & SIGNAGE PLAN
 GENERAL SITE PLAN

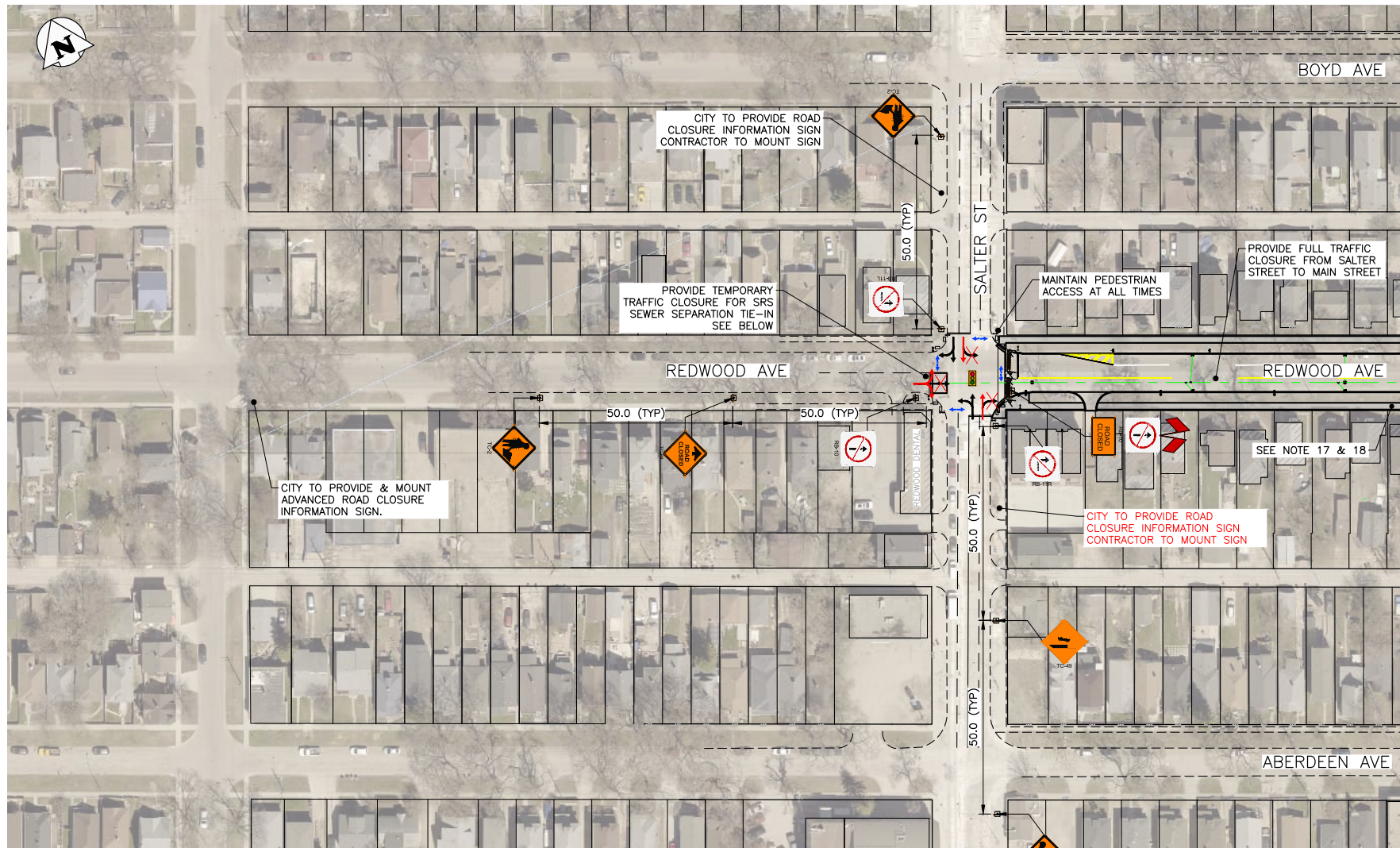
SHEET OF
1 5

COMPUTER FILE NAME
 21-0107-020

FIGURE
F100

Filepath: P:\Projects\2023\21-0107-020\21-0107-020_FALL_Signage - Tab:F100 Plotted By: GSmalley 22/11/22 [Tue 12:37pm]
 All (8/1/2024) / PLOT SCALE: 1:1

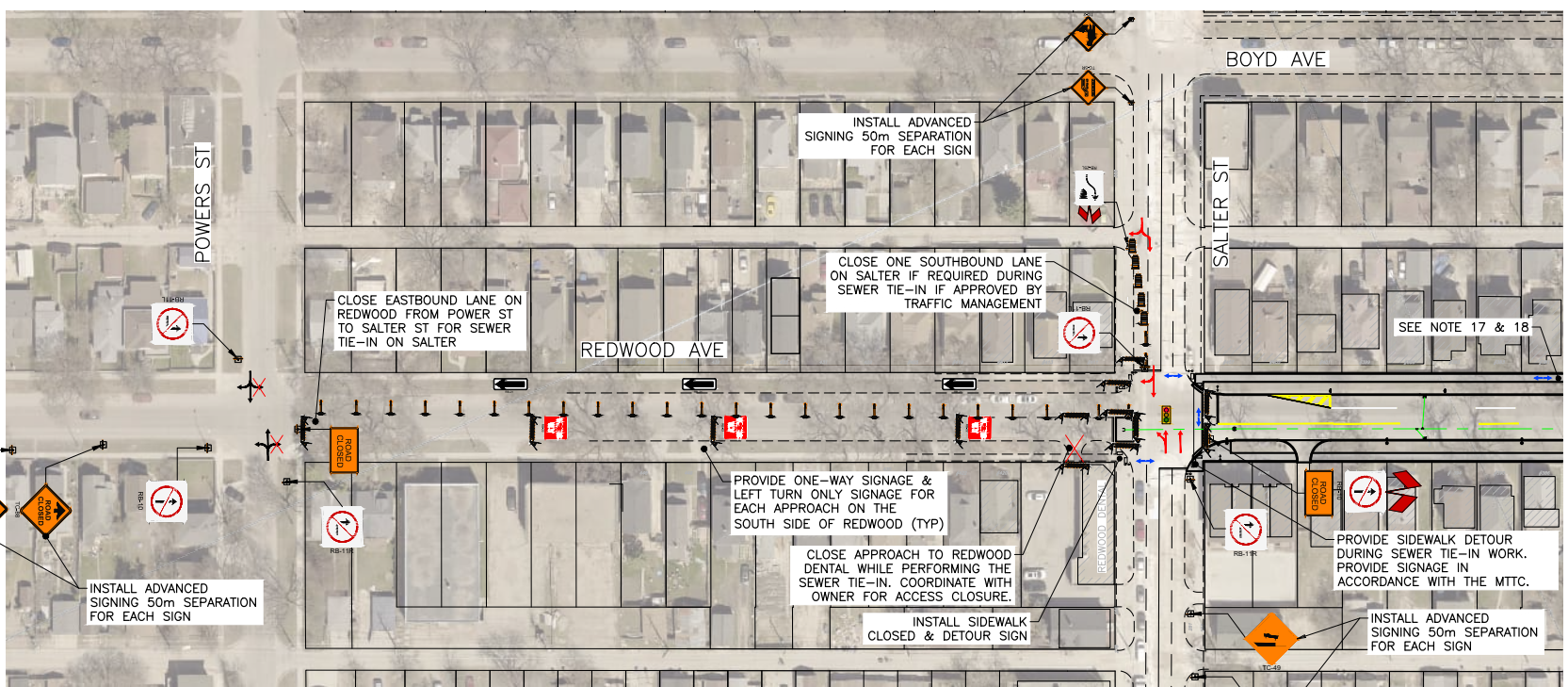
Filepath: P:\Projects\2021\21-0107-020\Drawings\21-0107-020_FALL_Signage - Tab:F101 Plotted By: CSmalliey 22/11/22 [Tue 12:39pm]
 AT (8414594) / PLOT SCALE: 1:1



STAGING & SIGNAGE: REDWOOD SALTER INTERSECTION
SCALE: NTS

NOTES:

1. ALL TEMPORARY TRAFFIC CONTROL TO BE IN ACCORDANCE WITH THE LATEST MANUAL OF TEMPORARY TRAFFIC CONTROL ON CITY STREETS (MTTC) AT TENDER.
2. PERFORM WORK IN PHASES & STAGES TO MINIMIZE IMPACT TO TRAFFIC FLOW AND ACCESS TO RESIDENCES.
3. NOT ALL REQUIRED SIGNAGE IS SHOWN FOR EACH PHASE & SUB-PHASE. ADDITIONAL SIGNAGE TO PROVIDED IN ACCORDANCE WITH THE MTTC.
4. THE PERMANENT POSTED SPEED LIMIT OF 50 KM/HR SHALL BE USED FOR ALL TAPER LENGTHS AND OTHER CRITERIA IN THE MTTC.
5. CONTRACTOR SHALL SUBMIT THE PEDESTRIAN ACCESSIBILITY PLAN FOR REVIEW & ACCEPTANCE BY THE CONTRACT ADMINISTRATOR.
6. CONTRACTOR SHALL BE RESPONSIBLE FOR THE SUPPLY, PLACEMENT & MAINTENANCE OF ALL TEMPORARY TRAFFIC CONTROL SIGNAGE IN ACCORDANCE WITH THE TENDER.
7. CONTRACTOR SHALL BE RESPONSIBLE FOR ALL PERMITS.
8. ALL LANE CLOSURE REQUESTS MUST BE SUBMITTED THROUGH THE CONTRACT ADMINISTRATOR & ARE SUBJECT TO THE APPROVAL OF THE TRAFFIC MANAGEMENT BRANCH.
9. CONTRACTOR TO PROVIDE FLAGPERSONS IN ACCORDANCE WITH THE MTTC WHEN MOVING MATERIALS OR EQUIPMENT INTO OR OUT OF TRAFFIC.
10. CONTRACTOR SHALL PROVIDE FLAGPERSONS DURING ALL ASPHALT PLACEMENT AT THE PROJECT LIMITS TO MINIMIZE IMPACT TO TRAFFIC.
11. WHEN FLAGPERSONS ARE PRESENT, FLAGPERSON SIGNAGE MUST BE PLACED IN ACCORDANCE WITH THE MTTC.
12. WHEN FLAGPERSONS ARE NOT PRESENT, THE FLAGPERSON SIGNAGE MUST BE REMOVED OR HIDDEN.
13. PROVIDE TEMPORARY RAMPS & CROSSING WHERE DIRECTED BY CONTRACT ADMINISTRATOR & IN ACCORDANCE WITH THE ACCESSIBILITY PLAN FOR PEDESTRIAN CROSSINGS WHILE PERFORMING WORK IN THE INTERSECTIONS AND APPROACHES.
14. INSTALL WARNING FLAGS IN ACCORDANCE WITH MTTC 3.07.04 ON THE FIRST WARNING SIGN IN EACH LANE DROP TAPER.
15. WHERE A LANE IS REQUIRED TO BE CLOSED ON SALTER STREET OR MAIN STREET TO PERFORM THE WORK ON THE TIE-IN DURING OFF PEAK-HOURS, A TEMPORARY TRANSIT LANDING WILL BE REQUIRED FOR THE TEMPORARY TRANSIT STOP RELOCATION.
16. CONTRACTOR TO MONITOR TEMPORARY SIGNAGE FOR THE DURATION OF THE PROJECT & MODIFY AS NEEDED FOR EACH STAGE OF THE WORKS. CONTRACTOR TO REMEDY ANY SIGNAGE DEEMED INSUFFICIENT OR INCORRECT AS DIRECTED BY THE CONTRACT ADMINISTRATOR.
17. STAGE SIDEWALK WORK SUCH THAT PEDESTRIAN ACCESS IS MAINTAINED ALONG ONE SIDE OF REDWOOD AVE AT ALL TIMES.
18. PROVIDE SIDEWALK CLOSED & DETOUR SIGNAGE IN ACCORDANCE WITH THE MTTC.



STAGING & SIGNAGE: SALTER SEWER TIE-IN
SCALE: NTS

PROPERTY LIMITS DELINEATION

DELINEATION OF PROPERTY LIMITS AS SHOWN ON THIS DWG DOES NOT REPRESENT A "LEGAL SURVEY". KGS GROUP MAKES NO REPRESENTATION OR WARRANTY AS TO THE ACCURACY OF PROPERTY LIMITS DELINEATED ON THIS DWG, NOR ON THE DIMENSIONAL ACCURACY OF DWG FEATURES RELATIVE TO THOSE PROPERTY LIMITS.

METRIC

WHOLE NUMBERS INDICATE MILLIMETRES
DECIMALIZED NUMBERS INDICATE METRES

ISSUED FOR TENDER
NOT TO BE USED FOR CONSTRUCTION

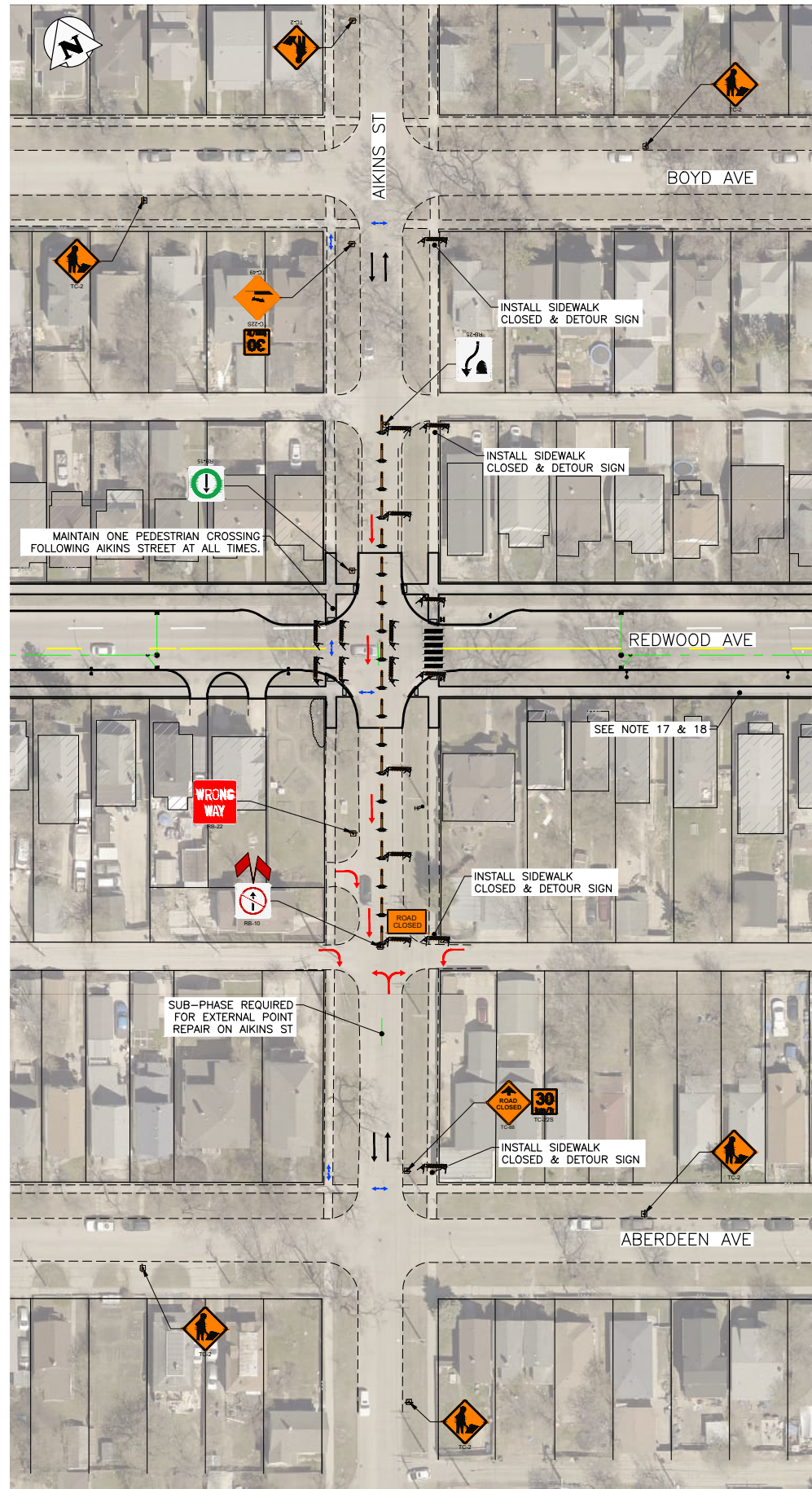
THE CITY OF WINNIPEG
 PUBLIC WORKS DEPARTMENT
 ENGINEERING DIVISION

NO.	REVISIONS	DATE	BY
0	ISSUED FOR TENDER	22/11/22	GES

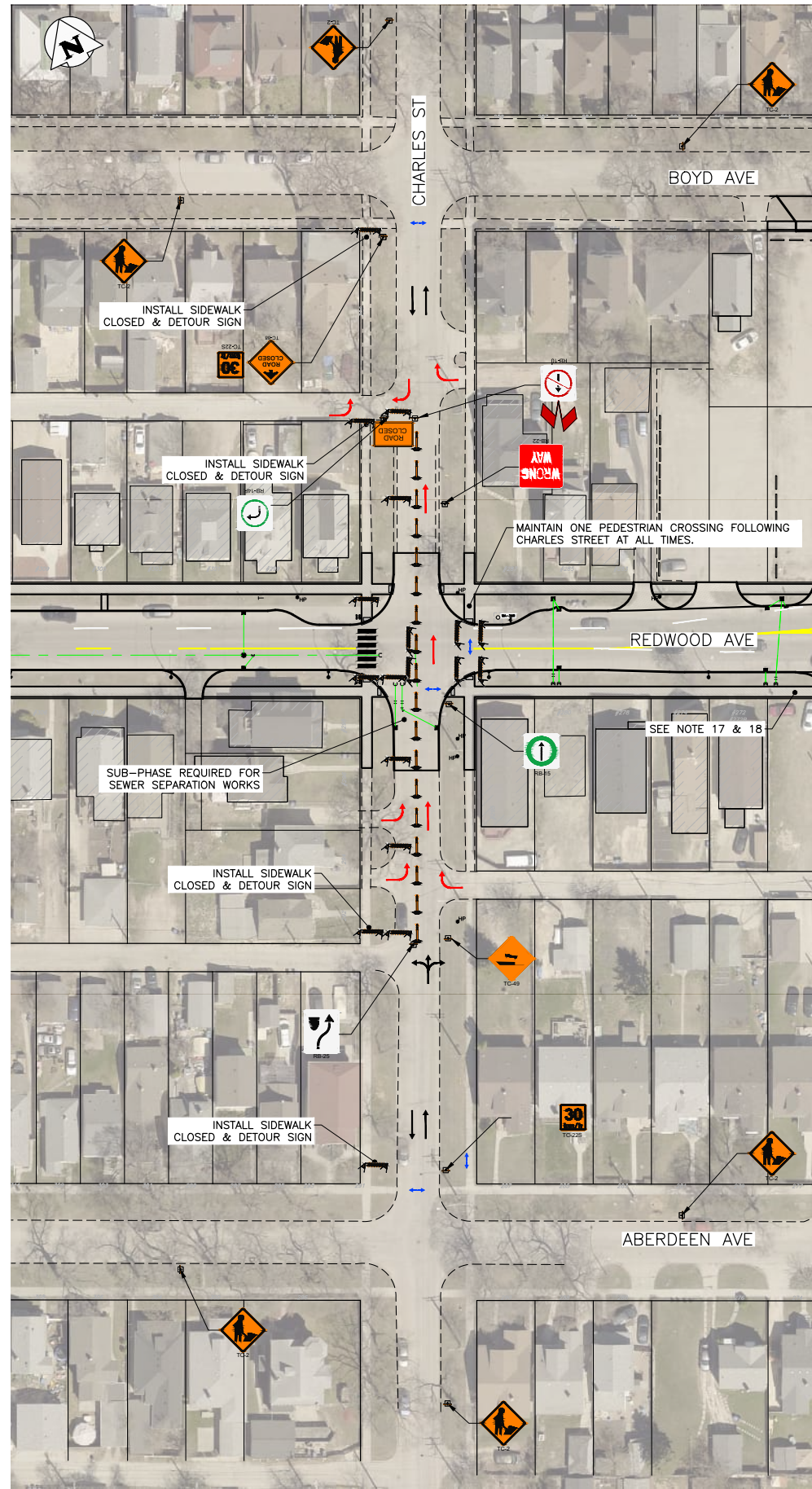
PROJECT TITLE
2023 REDWOOD RECONSTRUCTION: SALTER TO MAIN
 PHASING & SIGNAGE PLAN:
 REDWOOD / SALTER INTERSECTION

SHEET	OF
2	5
COMPUTER FILE NAME	
21-0107-020	
FIGURE	
F101	

Filepath: P:\Projects\2021\21-0107-020\Drawings\21-0107-020_FALL_Signage - Tab:F102_Plot.dwg Plotted By: CSmalley 22/11/22 [Tue 12:39pm]
 AT (8416594) / PLOT SCALE: 1:1



AIKINS STREET PHASE II: STAGE I TRAFFIC CLOSURE AND SIGNAGE PLAN
SCALE: NTS



CHARLES STREET PHASE II: STAGE I TRAFFIC CLOSURE AND SIGNAGE PLAN
SCALE: NTS

NOTES:

1. ALL TEMPORARY TRAFFIC CONTROL TO BE IN ACCORDANCE WITH THE LATEST MANUAL OF TEMPORARY TRAFFIC CONTROL ON CITY STREETS (MTTC) AT TENDER.
2. PERFORM WORK IN PHASES & STAGES TO MINIMIZE IMPACT TO TRAFFIC FLOW AND ACCESS TO RESIDENCES.
3. NOT ALL REQUIRED SIGNAGE IS SHOWN FOR EACH PHASE & SUB-PHASE. ADDITIONAL SIGNAGE TO PROVIDED IN ACCORDANCE WITH THE MTTC.
4. THE PERMANENT POSTED SPEED LIMIT OF 50 KM/HR SHALL BE USED FOR ALL TAPER LENGTHS AND OTHER CRITERIA IN THE MTTC.
5. CONTRACTOR SHALL SUBMIT THE PEDESTRIAN ACCESSIBILITY PLAN FOR REVIEW & ACCEPTANCE BY THE CONTRACT ADMINISTRATOR.
6. CONTRACTOR SHALL BE RESPONSIBLE FOR THE SUPPLY, PLACEMENT & MAINTENANCE OF ALL TEMPORARY TRAFFIC CONTROL SIGNAGE IN ACCORDANCE WITH THE TENDER.
7. CONTRACTOR SHALL BE RESPONSIBLE FOR ALL PERMITS.
8. ALL LANE CLOSURE REQUESTS MUST BE SUBMITTED THROUGH THE CONTRACT ADMINISTRATOR & ARE SUBJECT TO THE APPROVAL OF THE TRAFFIC MANAGEMENT BRANCH.
9. CONTRACTOR TO PROVIDE FLAGPERSONS IN ACCORDANCE WITH THE MTTC WHEN MOVING MATERIALS OR EQUIPMENT INTO OR OUT OF TRAFFIC.
10. CONTRACTOR SHALL PROVIDE FLAGPERSONS DURING ALL ASPHALT PLACEMENT AT THE PROJECT LIMITS TO MINIMIZE IMPACT TO TRAFFIC.
11. WHEN FLAGPERSONS ARE PRESENT, FLAGPERSON SIGNAGE MUST BE PLACED IN ACCORDANCE WITH THE MTTC.
12. WHEN FLAGPERSONS ARE NOT PRESENT, THE FLAGPERSON SIGNAGE MUST BE REMOVED OR HIDDEN.
13. PROVIDE TEMPORARY RAMPS & CROSSING WHERE DIRECTED BY CONTRACT ADMINISTRATOR & IN ACCORDANCE WITH THE ACCESSIBILITY PLAN FOR PEDESTRIAN CROSSINGS WHILE PERFORMING WORK IN THE INTERSECTIONS AND APPROACHES.
14. INSTALL WARNING FLAGS IN ACCORDANCE WITH MTTC 3.07.04 ON THE FIRST WARNING SIGN IN EACH LANE DROP TAPER.
15. WHERE A LANE IS REQUIRED TO BE CLOSED ON SALTER STREET OR MAIN STREET TO PERFORM THE WORK ON THE TIE-IN DURING OFF PEAK-HOURS, A TEMPORARY TRANSIT LANDING WILL BE REQUIRED FOR THE TEMPORARY TRANSIT STOP RELOCATION.
16. CONTRACTOR TO MONITOR TEMPORARY SIGNAGE FOR THE DURATION OF THE PROJECT & MODIFY AS NEEDED FOR EACH STAGE OF THE WORKS. CONTRACTOR TO REMEDY ANY SIGNAGE DEEMED INSUFFICIENT OR INCORRECT AS DIRECTED BY THE CONTRACT ADMINISTRATOR.
17. STAGE SIDEWALK WORK SUCH THAT PEDESTRIAN ACCESS IS MAINTAINED ALONG ONE SIDE OF REDWOOD AVE AT ALL TIMES.
18. PROVIDE SIDEWALK CLOSED & DETOUR SIGNAGE IN ACCORDANCE WITH THE MTTC.

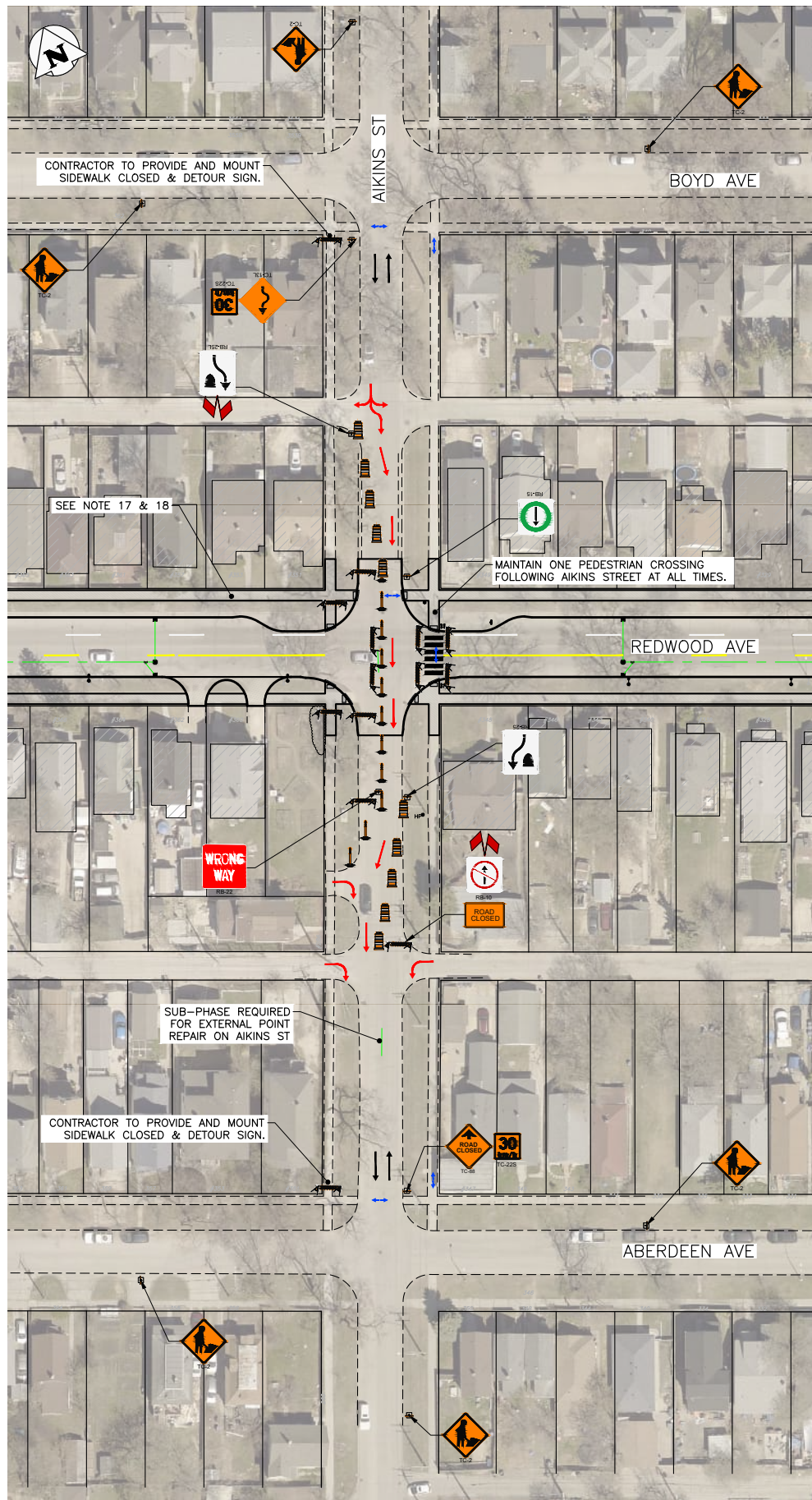
PROPERTY LIMITS DELINEATION
 DELINEATION OF PROPERTY LIMITS AS SHOWN ON THIS DWG DOES NOT REPRESENT A "LEGAL SURVEY". KGS GROUP MAKES NO REPRESENTATION OR WARRANTY AS TO THE ACCURACY OF PROPERTY LIMITS DELINEATED ON THIS DWG, NOR ON THE DIMENSIONAL ACCURACY OF DWG FEATURES RELATIVE TO THOSE PROPERTY LIMITS.

ISSUED FOR TENDER
 NOT TO BE USED FOR CONSTRUCTION

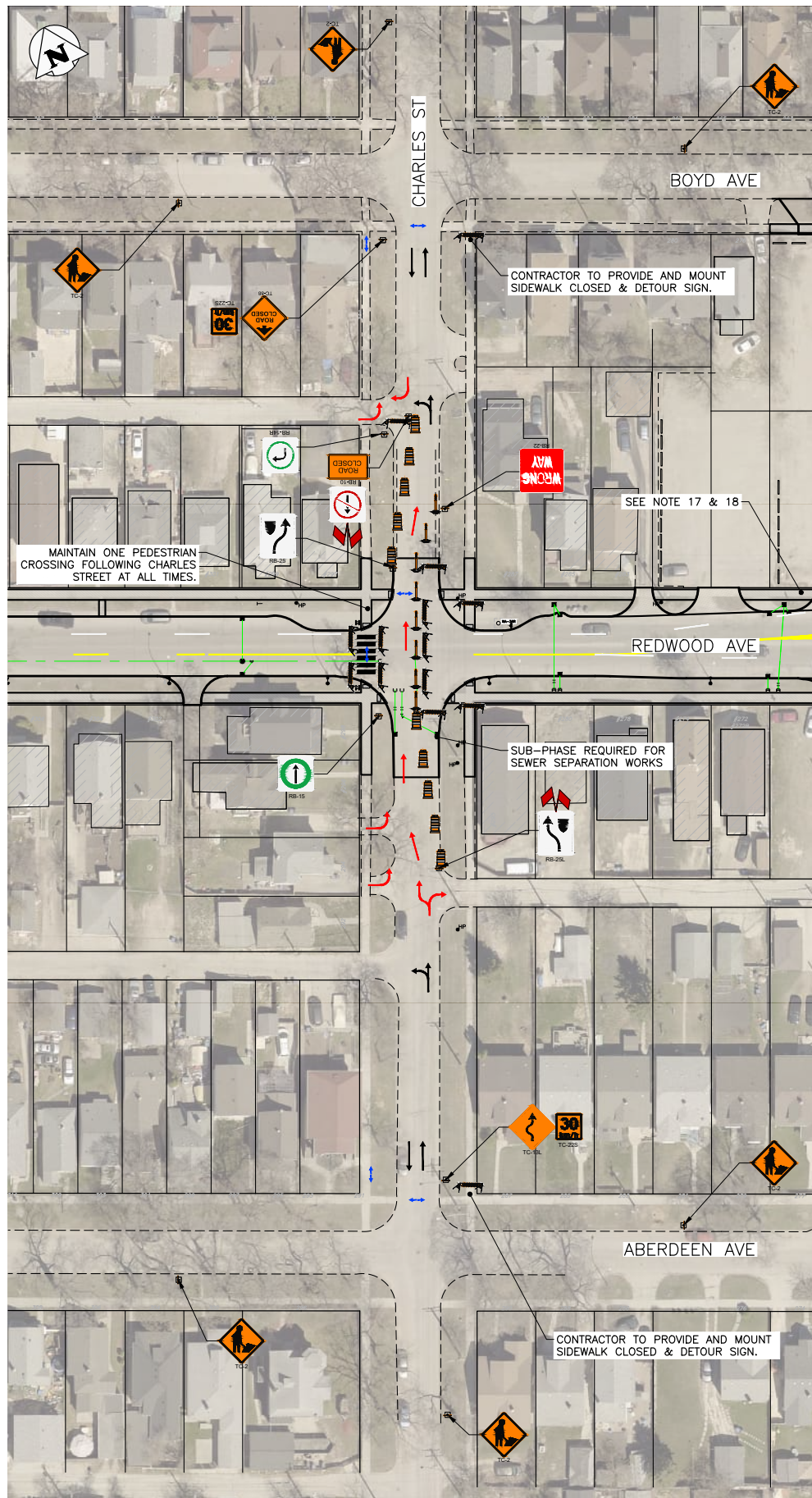
METRIC
 WHOLE NUMBERS INDICATE MILLIMETRES
 DECIMALIZED NUMBERS INDICATE METRES

THE CITY OF WINNIPEG PUBLIC WORKS DEPARTMENT ENGINEERING DIVISION		
PROJECT TITLE 2023 REDWOOD RECONSTRUCTION: SALTER TO MAIN		SHEET OF 3 5
PHASING & SIGNAGE PLAN PHASE II: STAGE I - AIKINS & CHARLES INTERSECTIONS		COMPUTER FILE NAME 21-0107-020
NO. REVISIONS DATE BY		FIGURE F102

Files: P:\Projects\2021\21-0107-020\Draw\21-0107-020_FALL_Signage - Tab:F103 Plotted By: CSmalley 22/11/22 [Tue 12:40pm]
 AT (841x594) / PLOT SCALE: 1:1



AIKINS STREET PHASE II: STAGE II
TRAFFIC CLOSURE AND SIGNAGE PLAN
 SCALE: NTS



CHARLES STREET PHASE II: STAGE II
TRAFFIC CLOSURE AND SIGNAGE PLAN
 SCALE: NTS

NOTES:

1. ALL TEMPORARY TRAFFIC CONTROL TO BE IN ACCORDANCE WITH THE LATEST MANUAL OF TEMPORARY TRAFFIC CONTROL ON CITY STREETS (MTTC) AT TENDER.
2. PERFORM WORK IN PHASES & STAGES TO MINIMIZE IMPACT TO TRAFFIC FLOW AND ACCESS TO RESIDENCES.
3. NOT ALL REQUIRED SIGNAGE IS SHOWN FOR EACH PHASE & SUB-PHASE. ADDITIONAL SIGNAGE TO PROVIDED IN ACCORDANCE WITH THE MTTC.
4. THE PERMANENT POSTED SPEED LIMIT OF 50 KM/HR SHALL BE USED FOR ALL TAPER LENGTHS AND OTHER CRITERIA IN THE MTTC.
5. CONTRACTOR SHALL SUBMIT THE PEDESTRIAN ACCESSIBILITY PLAN FOR REVIEW & ACCEPTANCE BY THE CONTRACT ADMINISTRATOR.
6. CONTRACTOR SHALL BE RESPONSIBLE FOR THE SUPPLY, PLACEMENT & MAINTENANCE OF ALL TEMPORARY TRAFFIC CONTROL SIGNAGE IN ACCORDANCE WITH THE TENDER.
7. CONTRACTOR SHALL BE RESPONSIBLE FOR ALL PERMITS.
8. ALL LANE CLOSURE REQUESTS MUST BE SUBMITTED THROUGH THE CONTRACT ADMINISTRATOR & ARE SUBJECT TO THE APPROVAL OF THE TRAFFIC MANAGEMENT BRANCH.
9. CONTRACTOR TO PROVIDE FLAGPERSONS IN ACCORDANCE WITH THE MTTC WHEN MOVING MATERIALS OR EQUIPMENT INTO OR OUT OF TRAFFIC.
10. CONTRACTOR SHALL PROVIDE FLAGPERSONS DURING ALL ASPHALT PLACEMENT AT THE PROJECT LIMITS TO MINIMIZE IMPACT TO TRAFFIC.
11. WHEN FLAGPERSONS ARE PRESENT, FLAGPERSON SIGNAGE MUST BE PLACED IN ACCORDANCE WITH THE MTTC.
12. WHEN FLAGPERSONS ARE NOT PRESENT, THE FLAGPERSON SIGNAGE MUST BE REMOVED OR HIDDEN.
13. PROVIDE TEMPORARY RAMPS & CROSSING WHERE DIRECTED BY CONTRACT ADMINISTRATOR & IN ACCORDANCE WITH THE ACCESSIBILITY PLAN FOR PEDESTRIAN CROSSINGS WHILE PERFORMING WORK IN THE INTERSECTIONS AND APPROACHES.
14. INSTALL WARNING FLAGS IN ACCORDANCE WITH MTTC 3.07.04 ON THE FIRST WARNING SIGN IN EACH LANE DROP TAPER.
15. WHERE A LANE IS REQUIRED TO BE CLOSED ON SALTER STREET OR MAIN STREET TO PERFORM THE WORK ON THE TIE-IN DURING OFF PEAK-HOURS, A TEMPORARY TRANSIT LANDING WILL BE REQUIRED FOR THE TEMPORARY TRANSIT STOP RELOCATION.
16. CONTRACTOR TO MONITOR TEMPORARY SIGNAGE FOR THE DURATION OF THE PROJECT & MODIFY AS NEEDED FOR EACH STAGE OF THE WORKS. CONTRACTOR TO REMEDY ANY SIGNAGE DEEMED INSUFFICIENT OR INCORRECT AS DIRECTED BY THE CONTRACT ADMINISTRATOR.
17. STAGE SIDEWALK WORK SUCH THAT PEDESTRIAN ACCESS IS MAINTAINED ALONG ONE SIDE OF REDWOOD AVE AT ALL TIMES.
18. PROVIDE SIDEWALK CLOSED & DETOUR SIGNAGE IN ACCORDANCE WITH THE MTTC.

PROPERTY LIMITS DELINEATION
 DELINEATION OF PROPERTY LIMITS AS SHOWN ON THIS DWG DOES NOT REPRESENT A "LEGAL SURVEY". KGS GROUP MAKES NO REPRESENTATION OR WARRANTY AS TO THE ACCURACY OF PROPERTY LIMITS DELINEATED ON THIS DWG, NOR ON THE DIMENSIONAL ACCURACY OF DWG FEATURES RELATIVE TO THOSE PROPERTY LIMITS.

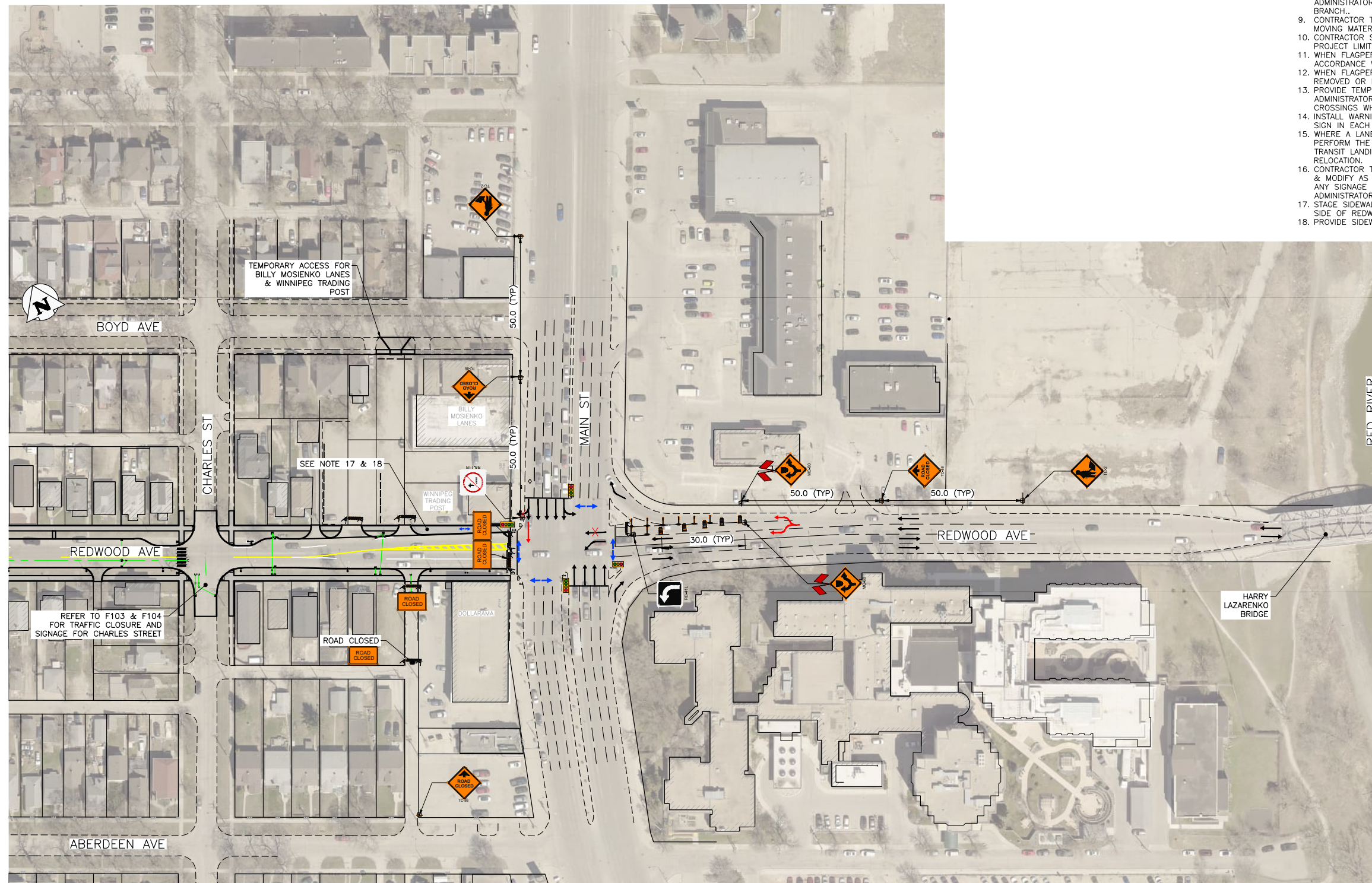
ISSUED FOR TENDER
 NOT TO BE USED FOR CONSTRUCTION

METRIC
 WHOLE NUMBERS INDICATE MILLIMETRES
 DECIMALIZED NUMBERS INDICATE METRES

THE CITY OF WINNIPEG PUBLIC WORKS DEPARTMENT ENGINEERING DIVISION		
PROJECT TITLE 2023 REDWOOD RECONSTRUCTION: SALTER TO MAIN		SHEET OF 4 5
PHASING & SIGNAGE PLAN PHASE II: STAGE II - AIKINS & CHARLES INTERSECTIONS		COMPUTER FILE NAME 21-0107-020
NO. REVISIONS DATE BY		FIGURE F103

NOTES:

1. ALL TEMPORARY TRAFFIC CONTROL TO BE IN ACCORDANCE WITH THE LATEST MANUAL OF TEMPORARY TRAFFIC CONTROL ON CITY STREETS (MTTC) AT TENDER.
2. PERFORM WORK IN PHASES & STAGES TO MINIMIZE IMPACT TO TRAFFIC FLOW AND ACCESS TO RESIDENCES.
3. NOT ALL REQUIRED SIGNAGE IS SHOWN FOR EACH PHASE & SUB-PHASE. ADDITIONAL SIGNAGE TO PROVIDED IN ACCORDANCE WITH THE MTTC.
4. THE PERMANENT POSTED SPEED LIMIT OF 50 KM/HR SHALL BE USED FOR ALL TAPER LENGTHS AND OTHER CRITERIA IN THE MTTC.
5. CONTRACTOR SHALL SUBMIT THE PEDESTRIAN ACCESSIBILITY PLAN FOR REVIEW & ACCEPTANCE BY THE CONTRACT ADMINISTRATOR.
6. CONTRACTOR SHALL BE RESPONSIBLE FOR THE SUPPLY, PLACEMENT & MAINTENANCE OF ALL TEMPORARY TRAFFIC CONTROL SIGNAGE IN ACCORDANCE WITH THE TENDER.
7. CONTRACTOR SHALL BE RESPONSIBLE FOR ALL PERMITS.
8. ALL LANE CLOSURE REQUESTS MUST BE SUBMITTED THROUGH THE CONTRACT ADMINISTRATOR & ARE SUBJECT TO THE APPROVAL OF THE TRAFFIC MANAGEMENT BRANCH.
9. CONTRACTOR TO PROVIDE FLAGPERSONS IN ACCORDANCE WITH THE MTTC WHEN MOVING MATERIALS OR EQUIPMENT INTO OR OUT OF TRAFFIC.
10. CONTRACTOR SHALL PROVIDE FLAGPERSONS DURING ALL ASPHALT PLACEMENT AT THE PROJECT LIMITS TO MINIMIZE IMPACT TO TRAFFIC.
11. WHEN FLAGPERSONS ARE PRESENT, FLAGPERSON SIGNAGE MUST BE PLACED IN ACCORDANCE WITH THE MTTC.
12. WHEN FLAGPERSONS ARE NOT PRESENT, THE FLAGPERSON SIGNAGE MUST BE REMOVED OR HIDDEN.
13. PROVIDE TEMPORARY RAMPS & CROSSING WHERE DIRECTED BY CONTRACT ADMINISTRATOR & IN ACCORDANCE WITH THE ACCESSIBILITY PLAN FOR PEDESTRIAN CROSSINGS WHILE PERFORMING WORK IN THE INTERSECTIONS AND APPROACHES.
14. INSTALL WARNING FLAGS IN ACCORDANCE WITH MTTC 3.07.04 ON THE FIRST WARNING SIGN IN EACH LANE DROP TAPER.
15. WHERE A LANE IS REQUIRED TO BE CLOSED ON SALTER STREET OR MAIN STREET TO PERFORM THE WORK ON THE TIE-IN DURING OFF PEAK-HOURS, A TEMPORARY TRANSIT LANDING WILL BE REQUIRED FOR THE TEMPORARY TRANSIT STOP RELOCATION.
16. CONTRACTOR TO MONITOR TEMPORARY SIGNAGE FOR THE DURATION OF THE PROJECT & MODIFY AS NEEDED FOR EACH STAGE OF THE WORKS. CONTRACTOR TO REMEDY ANY SIGNAGE DEEMED INSUFFICIENT OR INCORRECT AS DIRECTED BY THE CONTRACT ADMINISTRATOR.
17. STAGE SIDEWALK WORK SUCH THAT PEDESTRIAN ACCESS IS MAINTAINED ALONG ONE SIDE OF REDWOOD AVE AT ALL TIMES.
18. PROVIDE SIDEWALK CLOSED & DETOUR SIGNAGE IN ACCORDANCE WITH THE MTTC.



Filepath: P:\Projects\2021\21-0107-020\Drawings\21-0107-020_FALL_Signage - Tab:F104_Plot.dwg Plotted By: CSmalley 22/11/22 [Tue 12:42pm]
 All (8/1/2024) / PLOT SCALE: 1:1

STAGING & SIGNAGE: REDWOOD / MAIN
 SCALE: NTS

PROPERTY LIMITS DELINEATION
 DELINEATION OF PROPERTY LIMITS AS SHOWN ON THIS DWG DOES NOT REPRESENT A "LEGAL SURVEY". KGS GROUP MAKES NO REPRESENTATION OR WARRANTY AS TO THE ACCURACY OF PROPERTY LIMITS DELINEATED ON THIS DWG, NOR ON THE DIMENSIONAL ACCURACY OF DWG FEATURES RELATIVE TO THOSE PROPERTY LIMITS.

METRIC
 WHOLE NUMBERS INDICATE MILLIMETRES
 DECIMALIZED NUMBERS INDICATE METRES

ISSUED FOR TENDER
 NOT TO BE USED FOR CONSTRUCTION

NO.	REVISIONS	DATE	BY
0	ISSUED FOR TENDER	22/11/22	GES

THE CITY OF WINNIPEG
 PUBLIC WORKS DEPARTMENT
 ENGINEERING DIVISION

PROJECT TITLE
2023 REDWOOD RECONSTRUCTION: SALTER TO MAIN

PHASING & SIGNAGE PLAN:
REDWOOD / MAIN INTERSECTION

SHEET	OF
5	5
COMPUTER FILE NAME	21-0107-020
FIGURE	F104