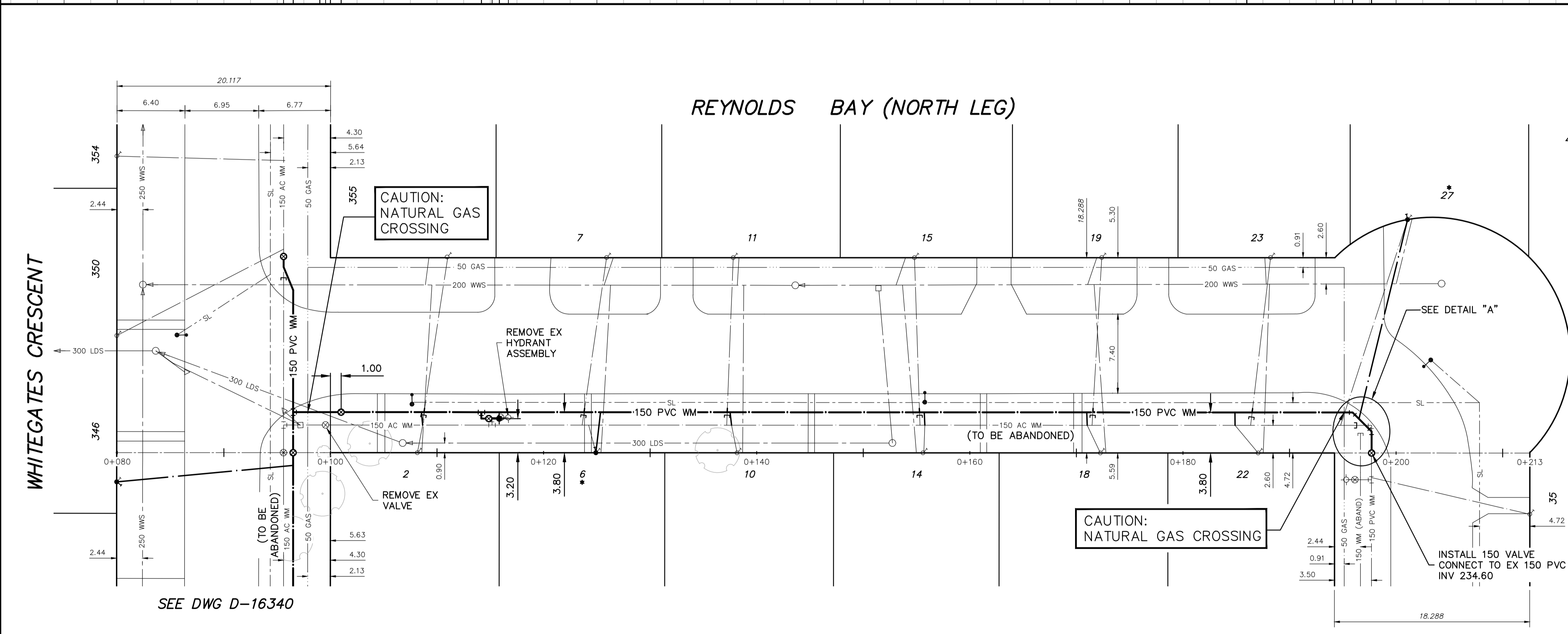


DETAIL "A"
CONNECTION AT REYNOLDS BAY E LEG
SCALE N.T.S.

REFER TO D-16334 FOR CONSTRUCTION NOTES

NOTE: CHAINAGES SHOWN ARE ALONG S. R. OF REYNOLDS BAY

FOR INDEX SEE D-16334



WATER SERVICE INFORMATION

ADDRESS	SIZE (mm) MATERIAL (STREET)	SIZE (mm) (PROP.)	SHORT & LONG MEASUREMENT	CORP. LOCATION	REMARKS
355 WHITEGATES CR	20 CU	20 CU	4.6 W OF ELL	2.4 W OF S/C	-
REYNOLDS BAY	20 CU	20 CU	10.9 E OF EL WHITEGATES CR	0.5 E OF S/C	-
2 REYNOLDS BAY	20 CU	20 CU	7.7 W OF ELL	0.7 W OF S/C	-
REYNOLDS BAY	20 CU	20 CU	8.2 E OF EL WHITEGATES CR	0.7 W OF S/C	-
6 REYNOLDS BAY	20 CU	20 CU	6.5 W OF ELL	2.3 W OF S/C	-
REYNOLDS BAY	20 CU	20 CU	24.9 E OF EL WHITEGATES CR	0.5 W OF S/C	-
7 REYNOLDS BAY	20 CU	20 CU	5.2 W OF ELL	0.5 W OF S/C	-
REYNOLDS BAY	20 CU	20 CU	25.9 E OF EL WHITEGATES CR	0.5 W OF S/C	-
10 REYNOLDS BAY	20 CU	20 CU	6.8 E OF WLL	0.1 E OF S/C	-
REYNOLDS BAY	20 CU	20 CU	38.2 E OF EL WHITEGATES CR	0.6 W OF S/C	-
11 REYNOLDS BAY	20 CU	20 CU	6.7 E OF WLL	0.5 W OF S/C	-
REYNOLDS BAY	20 CU	20 CU	37.8 E OF EL WHITEGATES CR	0.5 W OF S/C	-
14 REYNOLDS BAY	20 CU	20 CU	7.1 W OF ELL	0.5 W OF S/C	-
REYNOLDS BAY	20 CU	20 CU	38.6 W OF WL REYNOLDS BAY EAST LEG	1.2 W OF S/C	-
15 REYNOLDS BAY	20 CU	20 CU	7.0 E OF WLL	1.2 W OF S/C	-
REYNOLDS BAY	20 CU	20 CU	39.4 W OF WL REYNOLDS BAY EAST LEG	1.2 W OF S/C	-
18 REYNOLDS BAY	20 CU	20 CU	6.3 W OF ELL	1.9 W OF S/C	-
REYNOLDS BAY	20 CU	20 CU	22.0 W OF WL REYNOLDS BAY EAST LEG	0.9 W OF S/C	-
19 REYNOLDS BAY	20 CU	20 CU	7.2 W OF ELL	2.2 W OF S/C	-
REYNOLDS BAY	20 CU	20 CU	21.8 W OF WL REYNOLDS BAY EAST LEG	1.8 W OF S/C	-
22 REYNOLDS BAY	20 CU	20 CU	7.2 W OF ELL	6.3 W OF S/C	-
REYNOLDS BAY	20 CU	20 CU	7.2 W OF WL REYNOLDS BAY EAST LEG	6.3 W OF S/C	-
23 REYNOLDS BAY	20 CU	20 CU	7.5 W OF ELL	6.3 W OF S/C	-
REYNOLDS BAY	20 CU	20 CU	6.0 W OF WL REYNOLDS BAY EAST LEG	6.3 W OF S/C	-
27 REYNOLDS BAY	20 CU	20 CU	5.4 E OF WLL	6.3 W OF S/C	-
REYNOLDS BAY	20 CU	20 CU	6.9 E OF WL REYNOLDS BAY EAST LEG	6.3 W OF S/C	-

* SERVICES TO BE RENEWED TO R. ALL OTHERS TO BE RECONNECTED

NOTE: ALL VALVES TO BE INSTALLED CLOCKWISE TO CLOSE (BLACK OPERATING NUT)

ENGINEERS GEOSCIENTISTS MANITOBA

Certificate of Authorization
Tetra Tech Canada Inc.
No. 6499

METRIC
WHOLE NUMBERS INDICATE MILLIMETRES
DECIMALIZED NUMBERS INDICATE METRES

WARNING

IF POWER EQUIPMENT OR EXPLOSIVES ARE TO BE USED FOR EXCAVATION ON THIS PROJECT THE CONTRACTOR MUST:

- 1) NOTIFY THE GAS COMPANY OF THE PROPOSED LOCATION OF EXCAVATION.
- 2) TAKE PRECAUTION TO AVOID DAMAGE TO GAS COMPANY INSTALLATIONS.

SEE PROVINCIAL REGULATION 210/72 FOR DETAILS

LOCATION APPROVED UNDERGROUND STRUCTURES

SUPV. U/G STRUCTURES COMMITTEE DATE

NOTE:
LOCATION OF UNDERGROUND STRUCTURES AS SHOWN ARE BASED ON THE BEST INFORMATION AVAILABLE BUT NO GUARANTEE IS GIVEN THAT ALL EXISTING UTILITIES ARE SHOWN OR THAT THE GIVEN LOCATIONS ARE EXACT. CONFIRMATION OF EXISTENCE AND EXACT LOCATION OF ALL SERVICES MUST BE OBTAINED FROM THE INDIVIDUAL UTILITIES BEFORE PROCEEDING WITH CONSTRUCTION.

B.M. ELEV.

CONSTRUCTION COMPLETION DATE:

NO.	ISSUED FOR TENDER	DATE	BY
0	ISSUED FOR TENDER	22/05/25	IJM
NO.	REVISIONS	DATE	BY

TETRA TECH

DESIGNED BY: SJR
DRAWN BY: NL
SCALE: HORIZONTAL 1:250, VERTICAL 1:50
CHECKED BY: IJM
APPROVED BY: IJM
RELEASED FOR CONSTRUCTION

DATE: 2022 05 25
PLOT DATE: 2022 05 24

ENGINEER'S SEAL

CONSULTANT DRAWING NUMBER: 2200120200-DWG-C0009

THE CITY OF WINNIPEG
Winnipeg
WATER AND WASTE DEPARTMENT
ENGINEERING DIVISION

2022 WATERMAIN RENEWALS
CONTRACT 10
REYNOLDS BAY NORTH LEG
WHITEGATES CRESCENT TO
REYNOLDS BAY EAST LEG

SHEET 9 OF 12
CITY DRAWING NUMBER: D-16341