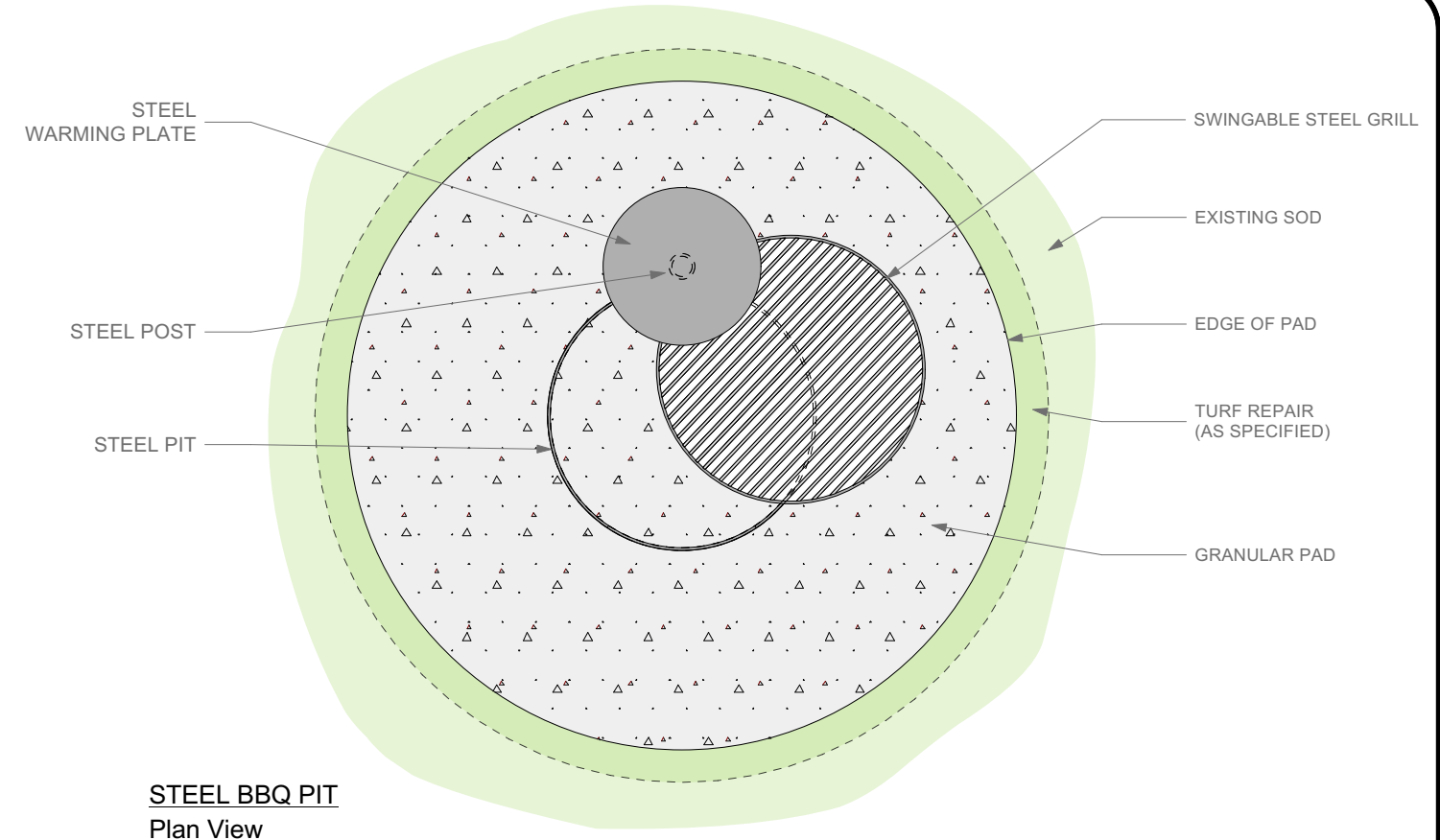
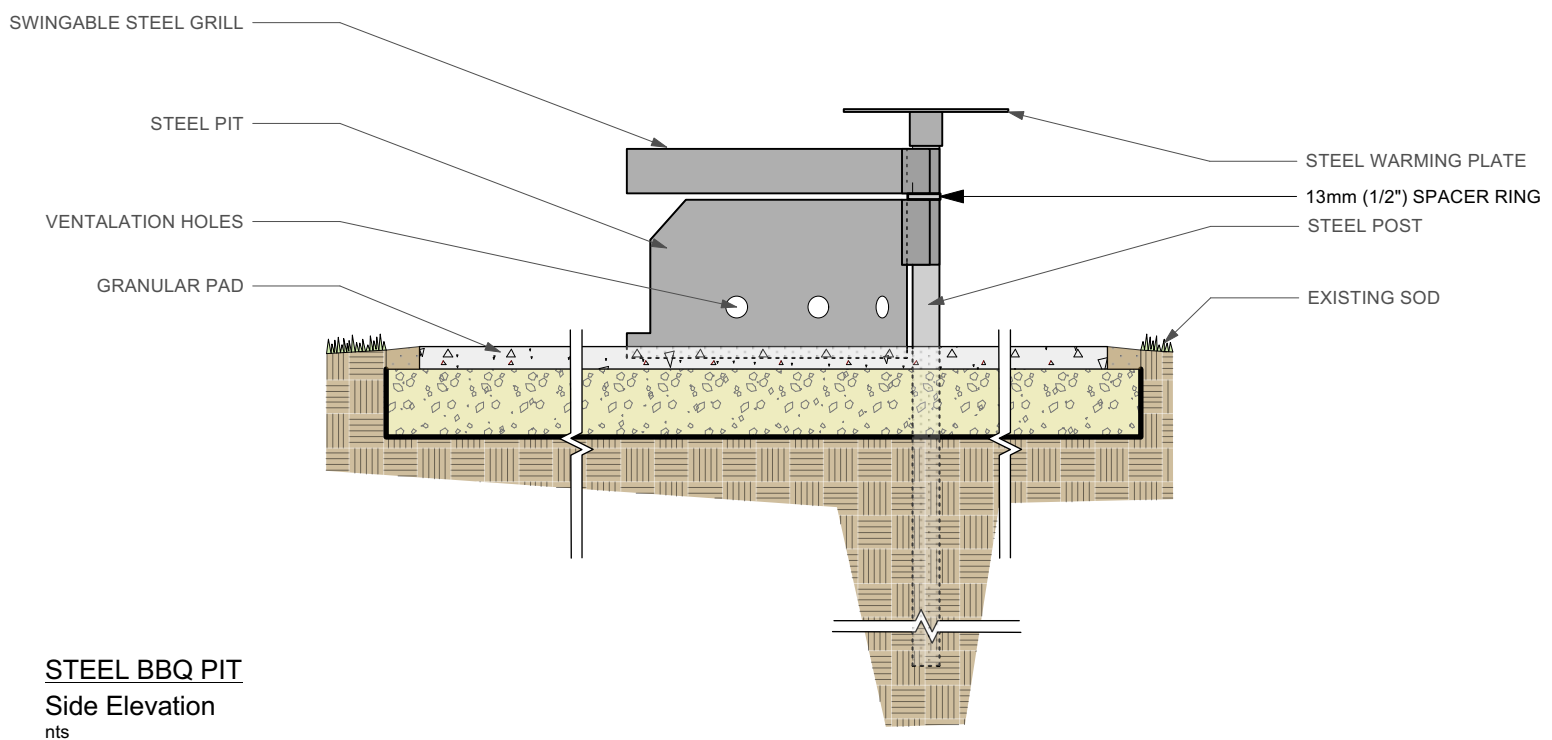


**STEEL BBQ PIT**  
Front Elevation  
nts



**STEEL BBQ PIT**  
Plan View  
nts



**STEEL BBQ PIT**  
Side Elevation  
nts

**NOTES:**

Pad should be a minimum of 3048mm (10') wide in diameter. Size and layout is project specific, so refer to layout and drawing specific notes.

Area for pad shall be excavated to a minimum depth of 200mm (8"). A minimum of 150mm (6") deep of compacted granular base shall be installed, and topped with a minimum of 50mm (2") deep of compacted decorative stone of choice, as per project specific requirements. Minimum 1.0% to maximum 2% cross slope.

Steel pit shall sit centered on the granular base; topping stone shall butt up to the edge of the pit, as well as cover any base material on the inside of the pit.

**Pit Installation Method:**

- excavate area
- compact sub-grade
- install non-woven geotextile
- install and compact base material
- install and compact decorative stone material
- pound post through finished pad and into the ground
- place steel pit onto pad; steel hinge to go over the post
- place steel grill over the pit; steel hinge to go over the post
- place warming plate onto post; secure to post with set screw
- repair sod around pad as required

DIMENSIONS SHOWN ARE IN MILLIMETRES UNLESS OTHERWISE SPECIFIED

REVISION: 2  
 DATE: Feb. 2020  
 SCALE: N.T.S.  
 DRAWN BY: NS/IM