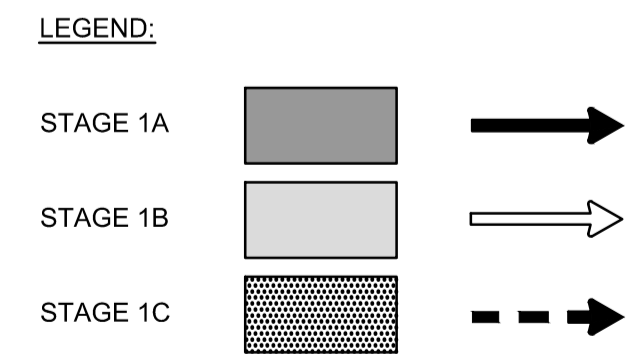
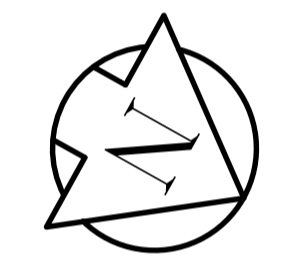
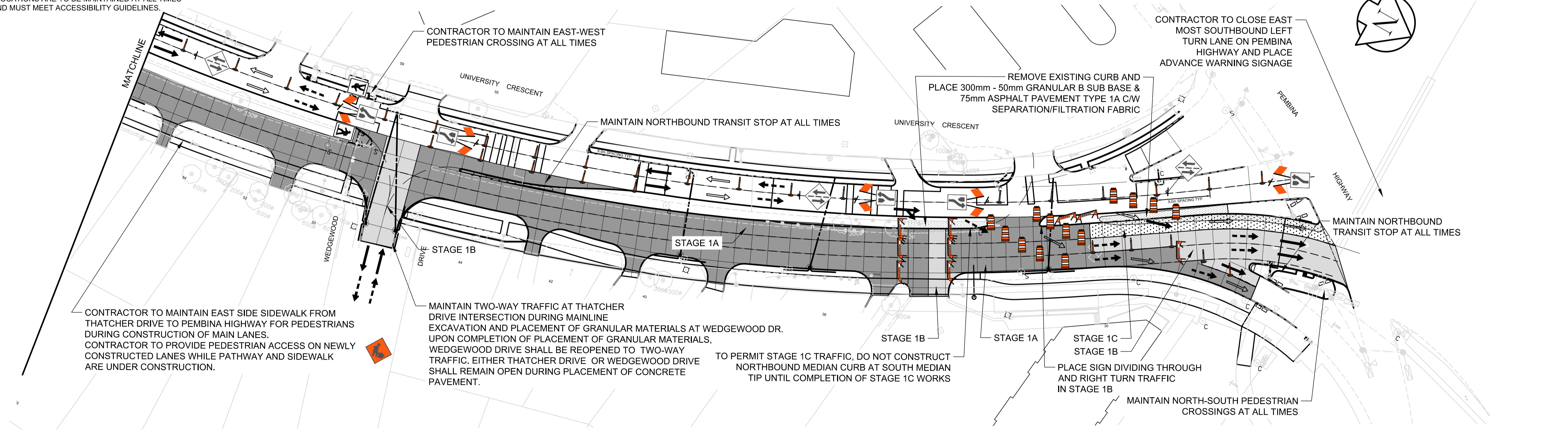


- CONSTRUCTION STAGING & TRAFFIC MANAGEMENT NOTES:**
1. TRAFFIC MANAGEMENT IS PER CLAUSE E7 OF THE TENDER DOCUMENT.
 2. UNDERGROUND WORKS IN STAGE 1 ARE TO BE COMPLETED PRIOR TO STAGE 1 TRAFFIC CONTROL BEING IN PLACE. COMPLETE TEMPORARY RESTORATIONS ON WEST SIDE OF ROADWAY. MAINTAIN ONE LANE IN EACH DIRECTION FROM THATCHER DRIVE TO PEMBINA HIGHWAY.
 3. PLACE ROAD CLOSED NO EXIT SIGNAGE AT THATCHER DRIVE OR WEDGEWOOD DRIVE EAST OF UNIVERSITY CRESCENT WHEN THE CORRESPONDING STREET IS CLOSED AT UNIVERSITY CRESCENT.
 4. MAINTAIN EAST SIDE PEDESTRIAN ACCESS AT ALL TIMES.
 5. MAINTAIN TEMPORARY CROSSWALK AT WEDGEWOOD DRIVE UNTIL NEW PEDESTRIAN CORRIDOR IS OPERATIONAL.
 6. MAINTAIN NORTH-SOUTH PEDESTRIAN CROSSING ON THE EAST SIDE OF PEMBINA HIGHWAY AT UNIVERSITY CRESCENT AT ALL TIMES.
 7. BIKE DETOURS SHALL BE AS PER THE TENDER DOCUMENT AND THE DIRECTION OF THE CONTRACT ADMINISTRATOR.
 8. EXISTING TRANSIT STOP LOCATIONS ARE TO BE MAINTAINED AT ALL TIMES WITH PORTABLE SIGNS AND MUST MEET ACCESSIBILITY GUIDELINES.



PRELIMINARY
NOT FOR CONSTRUCTION
Date: 05/26/22

ENGINEERS
GEOSCIENTISTS
MANITOBA
Certificate of Authorization
AECOM Canada Ltd.
No. 4671 Date: 05/26/22

METRIC
WHOLE NUMBERS INDICATE MILLIMETRES
DECIMALIZED NUMBERS INDICATE METRES

150 mm W.M.	WATERMAIN	150 mm W.M.	HYDRO	— x —	— x —	— x —	— x —	— x —	— x —	LOCATION APPROVED UNDERGROUND STRUCTURES	B.M. ELEV. 74M574 - Tbt. in W. wall of Conc. parking garage of No. 77 University Cres. E. of Pembina Hwy., 0.9 m N. of S.W. cor. of garage, & 2.6 m below recreation deck. ELEVATION: 234.128	AECOM	ENGINEER'S SEAL	THE CITY OF WINNIPEG PUBLIC WORKS DEPARTMENT ENGINEERING DIVISION	2022 REGIONAL STREET RENEWAL PROGRAM UNIVERSITY CRESCENT FROM THATCHER DRIVE TO PEMBINA HIGHWAY CITY DRAWING NUMBER P-3559-01 SHEET 01 OF 11
300mm L.D.S.	LAND DRAINAGE SEWER	300mm L.D.S.	M.T.S.	— x —	— x —	— x —	— x —	— x —	— x —						
250mm W.W.S.	WASTEWATER SEWER	250mm W.W.S.	CONCRETE ASPHALT	— x —	— x —	— x —	— x —	— x —	— x —	DRAWN BY JT	APPROVED BY RC	HOR. SCALE: 1:250 VERTICAL: N/A ORIGINAL SIGNED BY:			
—	MANHOLE	—	PROPERTY LINE	— x —	— x —	— x —	— x —	— x —	— x —	0 ISSUED FOR TENDER	05/26/22		BC	DATE	05/11/22
—	CATCH BASIN	—	SURVEY BAR	— x —	— x —	— x —	— x —	— x —	— x —	A ISSUED FOR REVIEW	05/11/22	BC			
—	CATCH PIT	—	ELEVATION (235.750)	— x —	— x —	— x —	— x —	— x —	— x —	NO. REVISIONS	DATE	BY	DATE	05/11/22	DATE
—	JUNCTIONS	—	TREE	— x —	— x —	— x —	— x —	— x —	— x —						
—	CULVERT	—	SIDEWALK RAMP	— x —	— x —	— x —	— x —	— x —	— x —						
—	GAS	—	CONCRETE SIDEWALK FENCE	— x —	— x —	— x —	— x —	— x —	— x —						
EXISTING	LEGEND - PLAN	PROPOSED	EXISTING	LEGEND - PLAN	PROPOSED	EXISTING	LEGEND - PROFILE	PROPOSED	EXISTING	LEGEND - PROFILE	PROPOSED				