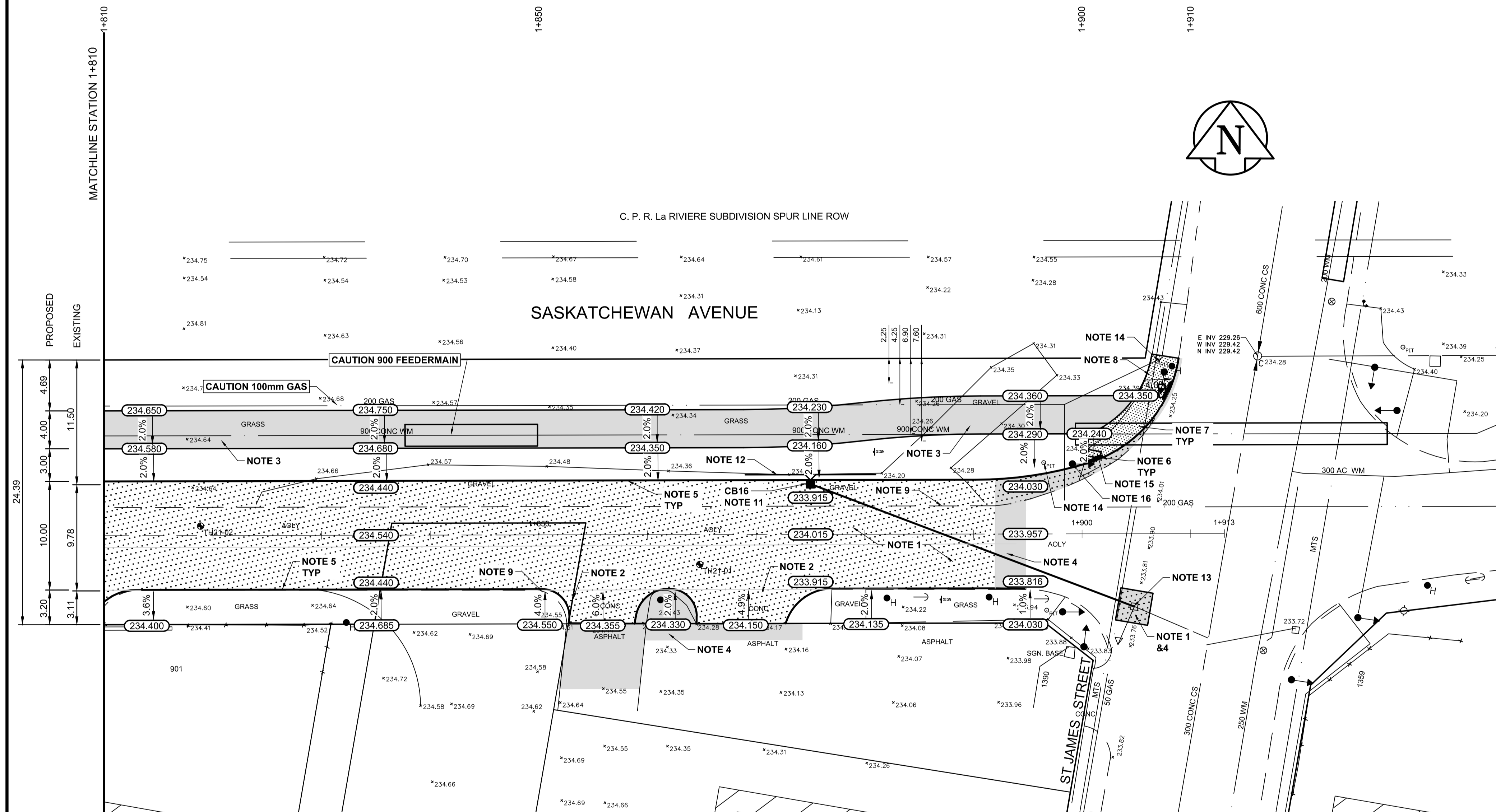


**TYPICAL CROSS SECTION**  
NTS

ITEM	RIM ELEV.	Sta	INVERT					CONNECTION	LEAD	FLOW RESTRICTOR	
			EAST	WEST	NORTH	SOUTH	V. RISER				
CB16	233.915	1+875	232.915	232.915		232.865		232.225±	EX. CB	32.0m	



**REFERENCE NOTES:**

- PAVEMENT DIMENSIONS ARE TO BACK OF CURB
- BASELINE IS CENTRE LINE ROADWAY
- PROPERTY LINES OBTAINED FROM CITY OF WINNIPEG L.B.I.S., AND NO SCALE FACTOR WAS APPLIED
- REFER TO AECOM FIELD BOOK NO. 5111

**CONSTRUCTION NOTES:**

- REMOVE EXISTING PAVEMENT AND CONSTRUCT NEW 250mm PLAIN DOWELLED CONCRETE PAVEMENT
- REMOVE EXISTING PAVEMENT AND CONSTRUCT NEW 200mm REINFORCED CONCRETE PAVEMENT
- CONSTRUCT NEW ASPHALT MULTI-USE PATHWAY. REFER TO TYPICAL CROSS SECTION FOR DETAILS
- REMOVE EXISTING ASPHALT PAVEMENT AND PLACE NEW ASPHALT PAVEMENT TYPE 1A
- CONSTRUCT NEW MODIFIED BARRIER CURB (180mm HT., INTEGRAL)
- CONSTRUCT NEW RAMP CURB (10-12mm HT., INTEGRAL)
- CONSTRUCT NEW 100mm CONCRETE SIDEWALK
- REMOVE EXISTING 100mm CONCRETE SIDEWALK
- REMOVE EXISTING CONCRETE BARRIER CURB
- REMOVE EXISTING MODIFIED BARRIER CURB
- INSTALL NEW CURB AND GUTTER INLET c/w 1200mm CATCH BASIN (SD-024) AND CONNECT 200mm PVC LDS TO EXISTING CATCH BASIN
- INSTALL NEW 150mm SUBDRAIN 6.0m ON EACH SIDE OF CATCH BASIN
- ADJUST EXISTING MANHOLE/CATCH BASIN TO GRADE
- ADJUST EXISTING TRAFFIC SIGNAL PIT TO GRADE
- INSTALL NEW DETECTABLE WARNING SURFACE TILE
- REMOVE EXISTING TRAFFIC SIGNAL POLE (WORK BY OTHERS)

**PRELIMINARY**  
NOT FOR CONSTRUCTION  
Date: 05/06/22

**ENGINEERS**  
**SCIENTISTS**  
**MANITOBA**  
Certificate of Authorization  
AECOM Canada Ltd.  
No. 4671 Date: 05/06/22

**METRIC**  
WHOLE NUMBERS INDICATE MILLIMETRES  
DECIMALIZED NUMBERS INDICATE METRES

150 mm W.W.M.	150 mm W.M.	EXISTING	PROPOSED	EXISTING	PROPOSED	EXISTING	PROPOSED
HYDRANT	HYDRANT			HYDRO	HYDRO		
VALVE	VALVE			M.T.S.	M.T.S.		
LAND DRAINAGE SEWER	LAND DRAINAGE SEWER			CONCRETE	CONCRETE		
WASTEWATER SEWER	WASTEWATER SEWER			ASPHALT	ASPHALT		
MANHOLE	MANHOLE			PROPERTY LINE	PROPERTY LINE		
CATCH BASIN	CATCH BASIN			SURVEY BAR	SURVEY BAR		
CATCH PIT	CATCH PIT			ELEVATION	ELEVATION (235.750)		
JUNCTIONS	JUNCTIONS			TREE	TREE		
CULVERT	CULVERT			SIDEWALK RAMP	SIDEWALK RAMP		
GAS	GAS			CONCRETE SIDEWALK	CONCRETE SIDEWALK		
				FENCE	FENCE		

LOCATION APPROVED UNDERGROUND STRUCTURES	DATE
SUPV. U/G STRUCTURES COMMITTEE	

B.M. ELEV.	DATE	BY

DESIGNED BY	BC	CHECKED BY	BC
DRAWN BY	SS	APPROVED BY	RC
HOR. SCALE:	1:250	ORIGINAL SIGNED BY:	
VERTICAL:	1:10		

ISSUED FOR TENDER	05/06/22	BC
ISSUED FOR REVIEW	04/28/22	BC
NO. REVISIONS		

**AECOM**

ENGINEER'S SEAL

**THE CITY OF WINNIPEG**  
PUBLIC WORKS DEPARTMENT  
ENGINEERING DIVISION

2022 INDUSTRIAL STREET  
RENEWAL PROGRAM

SASKATCHEWAN AVENUE - SHERWIN ROAD TO ST. JAMES AVENUE  
CONCRETE PAVEMENT RECONSTRUCTION  
STATION 1+810 TO ST. JAMES AVENUE

CITY DRAWING NUMBER  
SHEET 11 OF 11