

**TYPICAL CROSS SECTION**  
NTS

ITEM	RIM ELEV.	Sta	INVERT				CONNECTION	LEAD	FLOW RESTRICTOR		
			EAST	WEST	NORTH	SOUTH					
CB10	234.260	1+594	233.260	233.260	233.210		CB	9.3m			
CB11	234.260	1+594	233.260	233.260		232.810	232.610	229.975±	1200 CS	3.5m	150mmØ
CB12	233.925	1+670	232.925	232.925	232.875				CB	9.3m	
CB13	233.925	1+670	232.925	232.925		232.475	232.275	230.195±	1200 CS	3.5m	150mmØ

**REFERENCE NOTES:**

- A. PAVEMENT DIMENSIONS ARE TO BACK OF CURB
- B. BASELINE IS CENTRE LINE ROADWAY
- C. PROPERTY LINES OBTAINED FROM CITY OF WINNIPEG L.B.I.S., AND NO SCALE FACTOR WAS APPLIED
- D. REFER TO AECOM FIELD BOOK NO. 5111

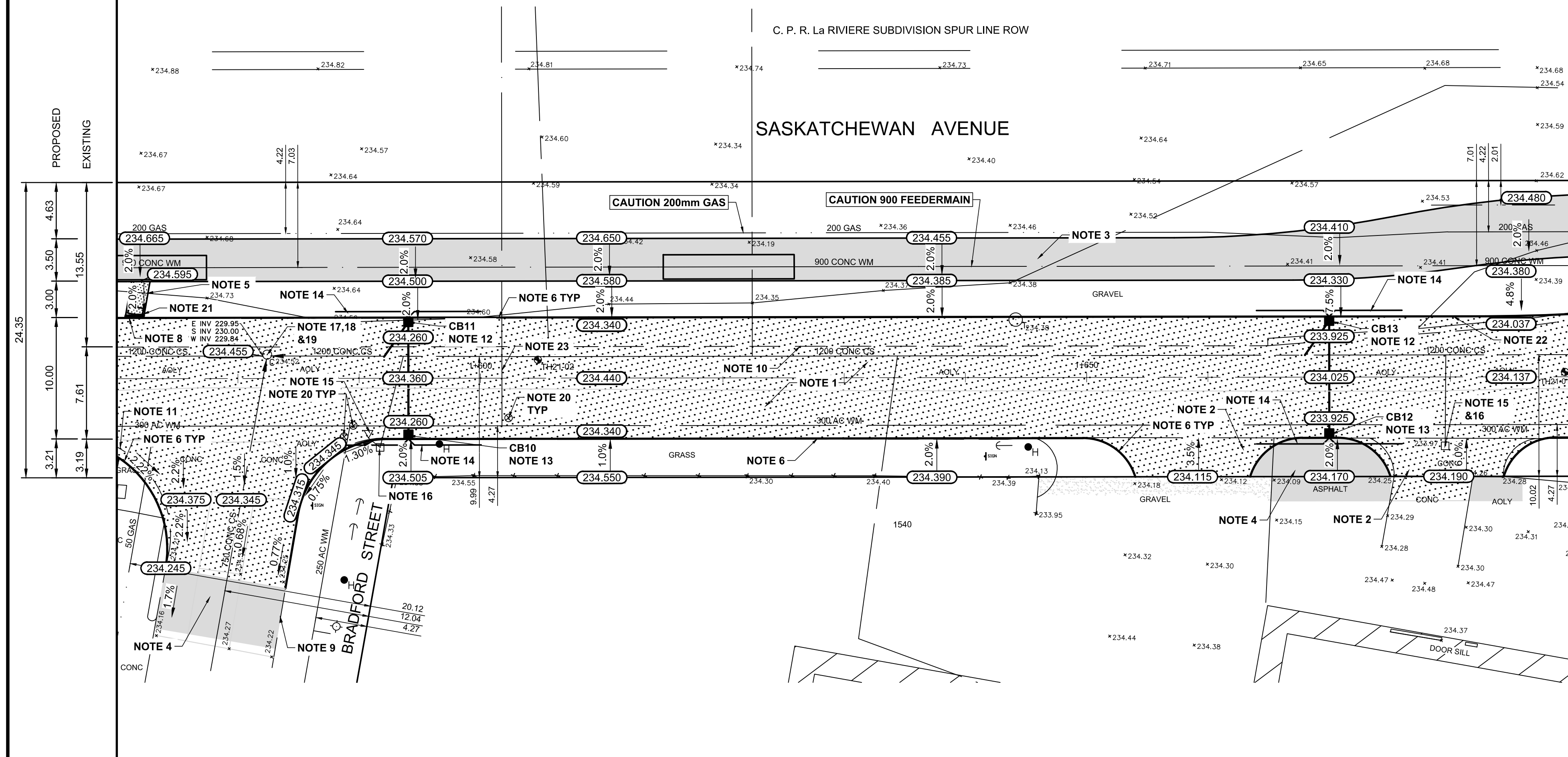
**CONSTRUCTION NOTES:**

1. REMOVE EXISTING PAVEMENT AND CONSTRUCT NEW 250mm PLAIN DOWELLED CONCRETE PAVEMENT
2. REMOVE EXISTING PAVEMENT AND CONSTRUCT NEW 200mm REINFORCED CONCRETE PAVEMENT
3. CONSTRUCT NEW ASPHALT MULTI-USE PATHWAY. REFER TO TYPICAL CROSS SECTION FOR DETAILS
4. REMOVE EXISTING ASPHALT PAVEMENT AND PLACE NEW ASPHALT PAVEMENT TYPE 1A
5. CONSTRUCT NEW 100mm CONCRETE SIDEWALK
6. CONSTRUCT NEW MODIFIED BARRIER CURB (180mm HT., INTEGRAL)
7. CONSTRUCT NEW BARRIER CURB (180mm HT., INTEGRAL)
8. CONSTRUCT NEW CURB RAMP (10mm HT., INTEGRAL)
9. RENEW EXISTING BARRIER CURB (150mm REVEAL HT., DOWELLED)
10. REMOVE EXISTING CONCRETE BARRIER CURB
11. REMOVE EXISTING MODIFIED BARRIER CURB
12. INSTALL NEW CURB AND GUTTER INLET c/w 1800mm CATCH BASIN (SD-024) AND CONNECT 250mm PVC LIDS TO EXISTING 1200mm COMBINED SEWER. INSTALL 150mm OUTLET FLOW RESTRICTOR (SD-025B)
13. INSTALL NEW CURB AND GUTTER INLET c/w 1200mm CATCH BASIN (SD-024) AND CONNECT 250mm PVC LIDS TO NEW CATCH BASIN
14. INSTALL NEW 150mm SUBDRAIN 6.0m ON EACH SIDE OF CATCH BASIN
15. REMOVE EXISTING CATCH PIT AND ABANDON LEAD
16. REMOVE EXISTING CATCH BASIN AND ABANDON LEAD
17. ADJUST EXISTING MANHOLE/CATCH BASIN TO GRADE
18. REMOVE EXISTING FRAME AND COVER AND PLACE NEW FRAME AND COVER (AP-006/AP-007)
19. INSTALL NEW CAST IRON RISER RING
20. ADJUST EXISTING WATER VALVE TO GRADE
21. INSTALL NEW DETECTABLE WARNING SURFACE TILE
22. CONSTRUCT NEW MOUNTABLE CURB (120mm., INTEGRAL) AND PLACE ASPHALT MILLINGS IN BOULEVARD
23. INSULATE EXISTING WATER SERVICE UNDER ROADWAY

**PRELIMINARY**  
NOT FOR CONSTRUCTION  
Date: 05/06/22

**ENGINEERS**  
**GEOSCIENTISTS**  
**MANITOBA**  
Certificate of Authorization  
AECOM Canada Ltd.  
No. 4671 Date: 05/06/22

**METRIC**  
WHOLE NUMBERS INDICATE MILLIMETRES  
DECIMALIZED NUMBERS INDICATE METRES



EXISTING	LEGEND - PLAN	PROPOSED	EXISTING	LEGEND - PLAN	PROPOSED	EXISTING	LEGEND - PROFILE	PROPOSED
150 mm W.M.	WATERMAIN	150 mm W.M.	HYDRO	M.T.S.	— x —	— x —	PROFILE	
300mm L.D.S.	LAND DRAINAGE SEWER	300mm L.D.S.	CONCRETE	CONCRETE	—	—	SOUTH GUTTER	
250mm W.W.S.	WASTEWATER SEWER	250mm W.W.S.	ASPHALT	ASPHALT	—	—	NORTH GUTTER	
	MANHOLE		PROPERTY LINE	PROPERTY LINE	—	—	NORTH TURN LANE	
	CATCH BASIN		SURVEY BAR	SURVEY BAR	—	—	S PROPERTY LINE	
	CATCH PIT		ELEVATION	ELEVATION (235.750)	—	—	N PROPERTY LINE	
	JUNCTIONS		TREE	TREE	—	—		
	CULVERT		SIDEWALK RAMP	SIDEWALK RAMP	—	—		
	GAS		CONCRETE SIDEWALK	CONCRETE SIDEWALK	—	—		
			FENCE	FENCE	—	—		

**LOCATION APPROVED UNDERGROUND STRUCTURES**  
SUPV. U/G STRUCTURES COMMITTEE DATE  
NOTE: LOCATION OF UNDERGROUND STRUCTURES AS SHOWN ARE BASED ON THE BEST INFORMATION AVAILABLE. BUT NO GUARANTEE IS GIVEN THAT ALL EXISTING UTILITIES ARE SHOWN OR THAT THE GIVEN LOCATIONS ARE EXACT. CONFIRMATION OF EXISTENCE AND EXACT LOCATION OF ALL SERVICES MUST BE OBTAINED FROM THE INDIVIDUAL UTILITIES BEFORE PROCEEDING WITH CONSTRUCTION.

B.M. ELEV.	NO.	REVISIONS	DATE	BY
	0	ISSUED FOR TENDER	05/06/22	BC
	A	ISSUED FOR REVIEW	04/28/22	BC

**AECOM**

DESIGNED BY	BC	CHECKED BY	BC
DRAWN BY	SS	APPROVED BY	RC
HOR. SCALE:	1:250	ORIGINAL SIGNED BY:	
VERTICAL:	1:10		

ENGINEER'S SEAL  
CONSULTANT DRAWING NO. CT-09

**THE CITY OF WINNIPEG**  
PUBLIC WORKS DEPARTMENT  
ENGINEERING DIVISION

2022 INDUSTRIAL STREET  
RENEWAL PROGRAM

SASKATCHEWAN AVENUE - SHERWIN ROAD TO ST. JAMES STREET  
CONCRETE PAVEMENT RECONSTRUCTION  
STATION 1+570 TO STATION 1+690

CITY DRAWING NUMBER  
SHEET 09 OF 11