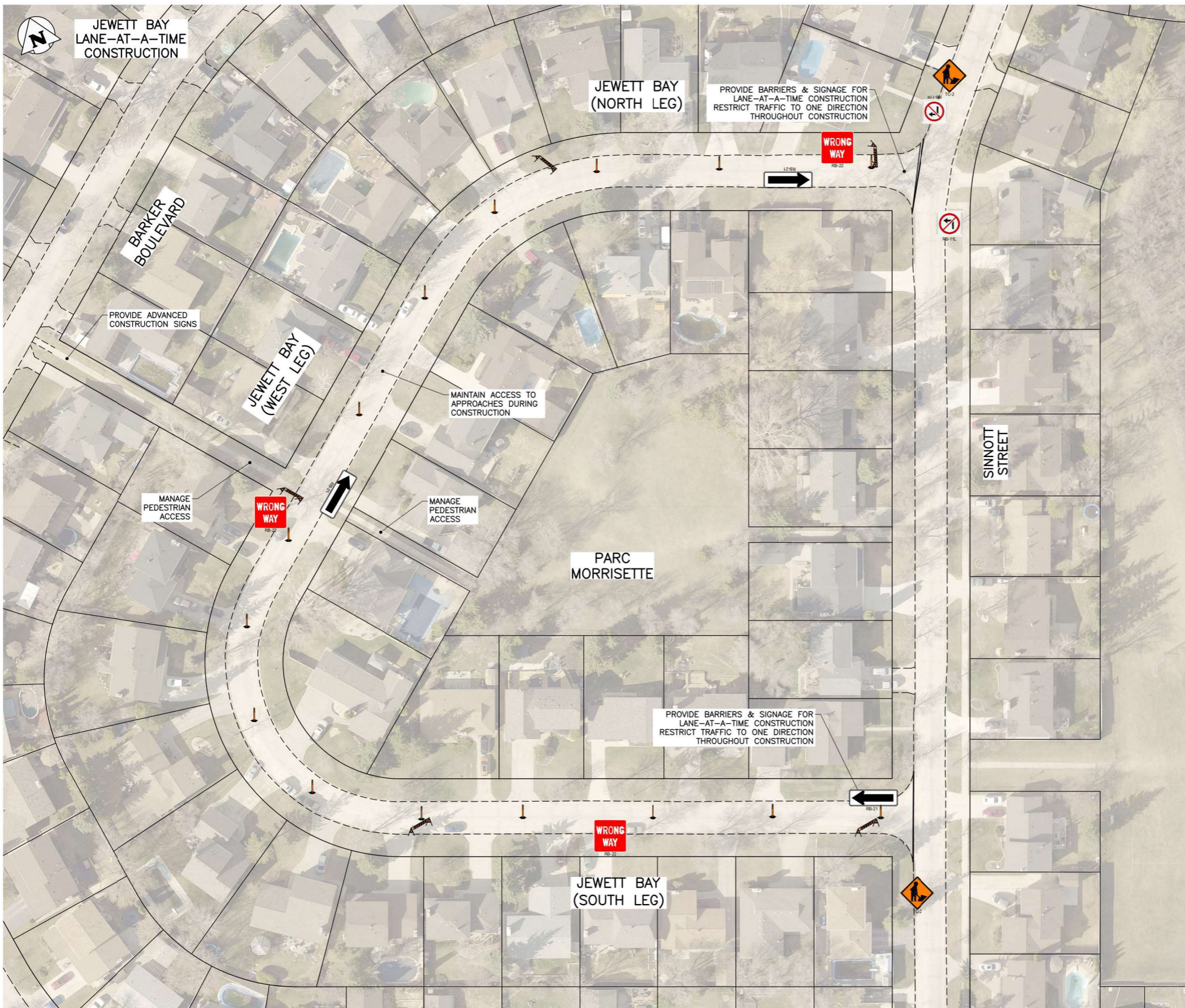


APPENDIX 'C'

PHASING & SIGNAGE PLAN



- NOTES:**
1. ALL TEMPORARY TRAFFIC CONTROL TO BE IN ACCORDANCE WITH THE LATEST MANUAL OF TEMPORARY TRAFFIC CONTROL ON CITY STREETS (MTTC).
 2. PERFORM WORK IN STAGES TO MINIMIZE IMPACT TO TRAFFIC FLOW AND ACCESS TO RESIDENCES.
 3. NOT ALL REQUIRED SIGNAGE IS SHOWN FOR EACH PHASE & SUB-PHASE.
 4. THE PERMANENT POSTED SPEED LIMIT OF THE APPLICABLE ROAD SHALL BE USED FOR ALL TAPER LENGTHS AND OTHER CRITERIA IN THE MTTC.
 5. CONTRACTOR SHALL SUBMIT THE ACCESSIBILITY PLAN FOR REVIEW AND ACCEPTANCE BY THE CONTRACT ADMINISTRATOR.
 6. CONTRACTOR SHALL BE RESPONSIBLE FOR THE SUPPLY, PLACEMENT AND MAINTENANCE OF ALL TEMPORARY TRAFFIC CONTROL SIGNAGE IN ACCORDANCE WITH THE CONTRACT.
 7. CONTRACTOR SHALL BE RESPONSIBLE FOR ALL PERMITS AND LANE CLOSURE REQUESTS.
 8. ALL LANE CLOSURES REQUIRE APPROVAL OF THE TRAFFIC MANAGEMENT BRANCH.
 9. CONTRACTOR TO PROVIDE FLAGPERSONS IN ACCORDANCE WITH THE MTTC WHEN MOVING MATERIALS OR EQUIPMENT INTO OR OUT OF TRAFFIC.
 10. CONTRACTOR SHALL PROVIDE FLAGPERSONS DURING ALL ASPHALT PLACEMENT TO MINIMIZE IMPACT TO TRAFFIC.
 11. WHEN FLAGPERSONS ARE PRESENT SIGNAGE MUST BE PLACED IN ACCORDANCE WITH THE MTTC.
 12. WHEN FLAGPERSONS ARE NOT PRESENT THE SIGNAGE MUST BE REMOVED OR HIDDEN.
 13. PROVIDE TEMPORARY RAMPS & CROSSING WHERE DIRECTED BY CONTRACT ADMINISTRATOR AND IN ACCORDANCE WITH THE ACCESSIBILITY PLAN FOR PEDESTRIAN CROSSINGS WHILE PERFORMING WORK IN THE INTERSECTIONS AND APPROACHES.
 14. INSTALL WARNING FLAGS IN ACCORDANCE WITH MTTC 3.07.04 ON THE FIRST WARNING SIGN IN EACH LANE DROP TAPER.
 15. PROVIDE SIGNAGE FOR CROSS STREETS IN ACCORDANCE WITH MTTC: FIGURE 17.

STAGING & SIGNAGE:
SCALE: NTS

P:\PROJECTS\2021\21-0107-016\DWG\MUN\21-0107-016_FALL_SIGNAGE.DWG
PLOT 1:1 (A-1) 2022-04-26

PROPERTY LIMITS DELINEATION
DELINEATION OF PROPERTY LIMITS AS SHOWN ON THIS DWG DOES NOT REPRESENT A "LEGAL SURVEY". KGS GROUP MAKES NO REPRESENTATION OR WARRANTY AS TO THE ACCURACY OF PROPERTY LIMITS DELINEATED ON THIS DWG, NOR ON THE DIMENSIONAL ACCURACY OF DWG FEATURES RELATIVE TO THOSE PROPERTY LIMITS.

METRIC
WHOLE NUMBERS INDICATE MILLIMETRES
DECIMALIZED NUMBERS INDICATE METRES

ISSUED FOR TENDER
NOT TO BE USED FOR CONSTRUCTION

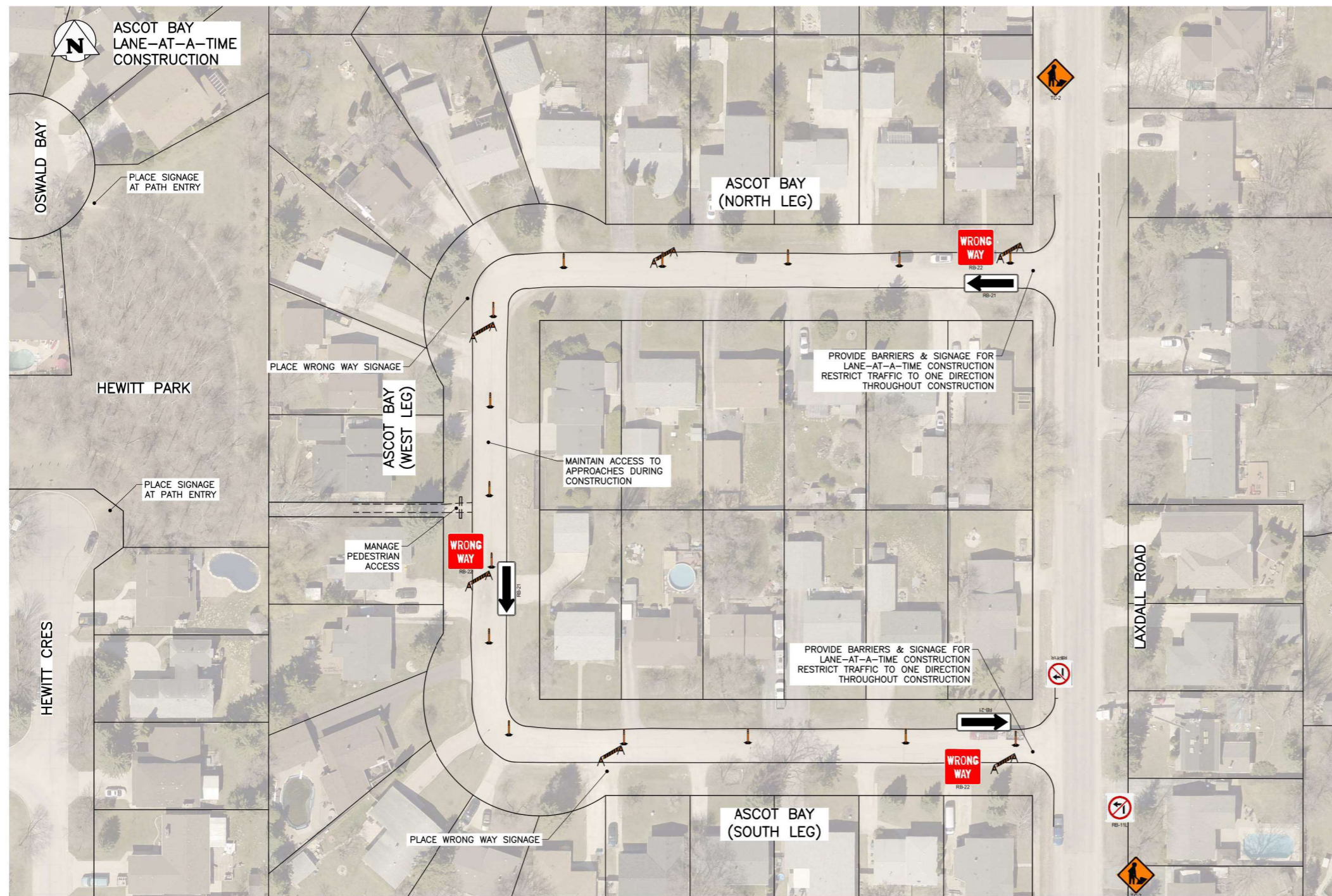
NO.	REVISIONS	DATE	BY
0	ISSUED FOR TENDER	22/04/26	GES

THE CITY OF WINNIPEG
PUBLIC WORKS DEPARTMENT
ENGINEERING DIVISION

KGS GROUP

PROJECT TITLE: 2022 LOCAL STREETS PACKAGE 22-R-04
JEWETT BAY MINOR REHABILITATION
PHASING & SIGNAGE PLAN

SHEET 1 OF 9
COMPUTER FILE NAME: 21-0107-016
FIGURE: F101



STAGING & SIGNAGE:
SCALE: NTS

NOTES:

1. ALL TEMPORARY TRAFFIC CONTROL TO BE IN ACCORDANCE WITH THE LATEST MANUAL OF TEMPORARY TRAFFIC CONTROL ON CITY STREETS (MTTC).
2. PERFORM WORK IN STAGES TO MINIMIZE IMPACT TO TRAFFIC FLOW AND ACCESS TO RESIDENCES.
3. NOT ALL REQUIRED SIGNAGE IS SHOWN FOR EACH PHASE & SUB-PHASE.
4. THE PERMANENT POSTED SPEED LIMIT OF THE APPLICABLE ROAD SHALL BE USED FOR ALL TAPER LENGTHS AND OTHER CRITERIA IN THE MTTC.
5. CONTRACTOR SHALL SUBMIT THE ACCESSIBILITY PLAN FOR REVIEW AND ACCEPTANCE BY THE CONTRACT ADMINISTRATOR.
6. CONTRACTOR SHALL BE RESPONSIBLE FOR THE SUPPLY, PLACEMENT AND MAINTENANCE OF ALL TEMPORARY TRAFFIC CONTROL SIGNAGE IN ACCORDANCE WITH THE CONTRACT.
7. CONTRACTOR SHALL BE RESPONSIBLE FOR ALL PERMITS AND LANE CLOSURE REQUESTS.
8. ALL LANE CLOSURES REQUIRE APPROVAL OF THE TRAFFIC MANAGEMENT BRANCH.
9. CONTRACTOR TO PROVIDE FLAGPERSONS IN ACCORDANCE WITH THE MTTC WHEN MOVING MATERIALS OR EQUIPMENT INTO OR OUT OF TRAFFIC.
10. CONTRACTOR SHALL PROVIDE FLAGPERSONS DURING ALL ASPHALT PLACEMENT TO MINIMIZE IMPACT TO TRAFFIC.
11. WHEN FLAGPERSONS ARE PRESENT SIGNAGE MUST BE PLACED IN ACCORDANCE WITH THE MTTC.
12. WHEN FLAGPERSONS ARE NOT PRESENT THE SIGNAGE MUST BE REMOVED OR HIDDEN.
13. PROVIDE TEMPORARY RAMPS & CROSSING WHERE DIRECTED BY CONTRACT ADMINISTRATOR AND IN ACCORDANCE WITH THE ACCESSIBILITY PLAN FOR PEDESTRIAN CROSSINGS WHILE PERFORMING WORK IN THE INTERSECTIONS AND APPROACHES.
14. INSTALL WARNING FLAGS IN ACCORDANCE WITH MTTC 3.07.04 ON THE FIRST WARNING SIGN IN EACH LANE DROP TAPER.
15. PROVIDE SIGNAGE FOR CROSS STREETS IN ACCORDANCE WITH MTTC: FIGURE 17.

P:\PROJECTS\2021\21-0107-016\MUN\21-0107-016_FALL_SIGNAGE.DWG
PLOT 1:1 (A-1) 2022-04-26

PROPERTY LIMITS DELINEATION

DELINEATION OF PROPERTY LIMITS AS SHOWN ON THIS DWG DOES NOT REPRESENT A "LEGAL SURVEY". KGS GROUP MAKES NO REPRESENTATION OR WARRANTY AS TO THE ACCURACY OF PROPERTY LIMITS DELINEATED ON THIS DWG, NOR ON THE DIMENSIONAL ACCURACY OF DWG FEATURES RELATIVE TO THOSE PROPERTY LIMITS.

METRIC

WHOLE NUMBERS INDICATE MILLIMETRES
DECIMALIZED NUMBERS INDICATE METRES

ISSUED FOR TENDER
NOT TO BE USED FOR CONSTRUCTION

NO.	REVISIONS	DATE	BY
0	ISSUED FOR TENDER	22/04/26	GES

THE CITY OF WINNIPEG
 PUBLIC WORKS DEPARTMENT
 ENGINEERING DIVISION

PROJECT TITLE	2022 LOCAL STREETS PACKAGE 22-R-04	SHEET	2	OF	9
	ASCOTT BAY AC RESURFACE	COMPUTER FILE NAME	21-0107-016		
	PHASING & SIGNAGE PLAN	FIGURE	F201		



- NOTES:**
1. ALL TEMPORARY TRAFFIC CONTROL TO BE IN ACCORDANCE WITH THE LATEST MANUAL OF TEMPORARY TRAFFIC CONTROL ON CITY STREETS (MTTC).
 2. PERFORM WORK IN STAGES TO MINIMIZE IMPACT TO TRAFFIC FLOW AND ACCESS TO RESIDENCES.
 3. NOT ALL REQUIRED SIGNAGE IS SHOWN FOR EACH PHASE & SUB-PHASE.
 4. THE PERMANENT POSTED SPEED LIMIT OF THE APPLICABLE ROAD SHALL BE USED FOR ALL TAPER LENGTHS AND OTHER CRITERIA IN THE MTTC.
 5. CONTRACTOR SHALL SUBMIT THE ACCESSIBILITY PLAN FOR REVIEW AND ACCEPTANCE BY THE CONTRACT ADMINISTRATOR.
 6. CONTRACTOR SHALL BE RESPONSIBLE FOR THE SUPPLY, PLACEMENT AND MAINTENANCE OF ALL TEMPORARY TRAFFIC CONTROL SIGNAGE IN ACCORDANCE WITH THE CONTRACT.
 7. CONTRACTOR SHALL BE RESPONSIBLE FOR ALL PERMITS AND LANE CLOSURE REQUESTS.
 8. ALL LANE CLOSURES REQUIRE APPROVAL OF THE TRAFFIC MANAGEMENT BRANCH.
 9. CONTRACTOR TO PROVIDE FLAGPERSONS IN ACCORDANCE WITH THE MTTC WHEN MOVING MATERIALS OR EQUIPMENT INTO OR OUT OF TRAFFIC.
 10. CONTRACTOR SHALL PROVIDE FLAGPERSONS DURING ALL ASPHALT PLACEMENT TO MINIMIZE IMPACT TO TRAFFIC.
 11. WHEN FLAGPERSONS ARE PRESENT SIGNAGE MUST BE PLACED IN ACCORDANCE WITH THE MTTC.
 12. WHEN FLAGPERSONS ARE NOT PRESENT THE SIGNAGE MUST BE REMOVED OR HIDDEN.
 13. PROVIDE TEMPORARY RAMPS & CROSSING WHERE DIRECTED BY CONTRACT ADMINISTRATOR AND IN ACCORDANCE WITH THE ACCESSIBILITY PLAN FOR PEDESTRIAN CROSSINGS WHILE PERFORMING WORK IN THE INTERSECTIONS AND APPROACHES.
 14. INSTALL WARNING FLAGS IN ACCORDANCE WITH MTTC 3.07.04 ON THE FIRST WARNING SIGN IN EACH LANE DROP TAPER.
 15. PROVIDE SIGNAGE FOR CROSS STREETS IN ACCORDANCE WITH MTTC: FIGURE 17.

STAGING & SIGNAGE:
SCALE: 1:250

P:\PROJECTS\2021\21-0107-016\DWG\MUN\21-0107-016_FALL_SIGNAGE.DWG
PLOT 1:1 (A-1) 2022-04-26

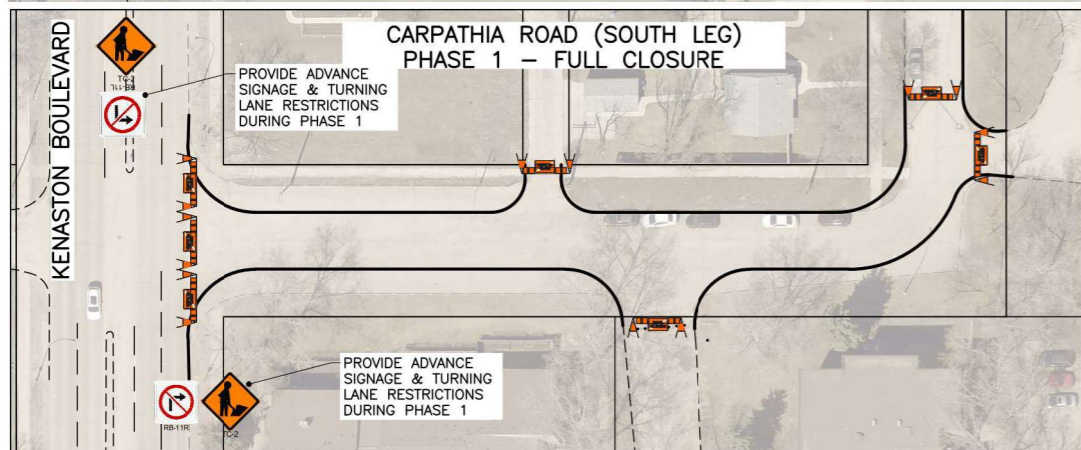
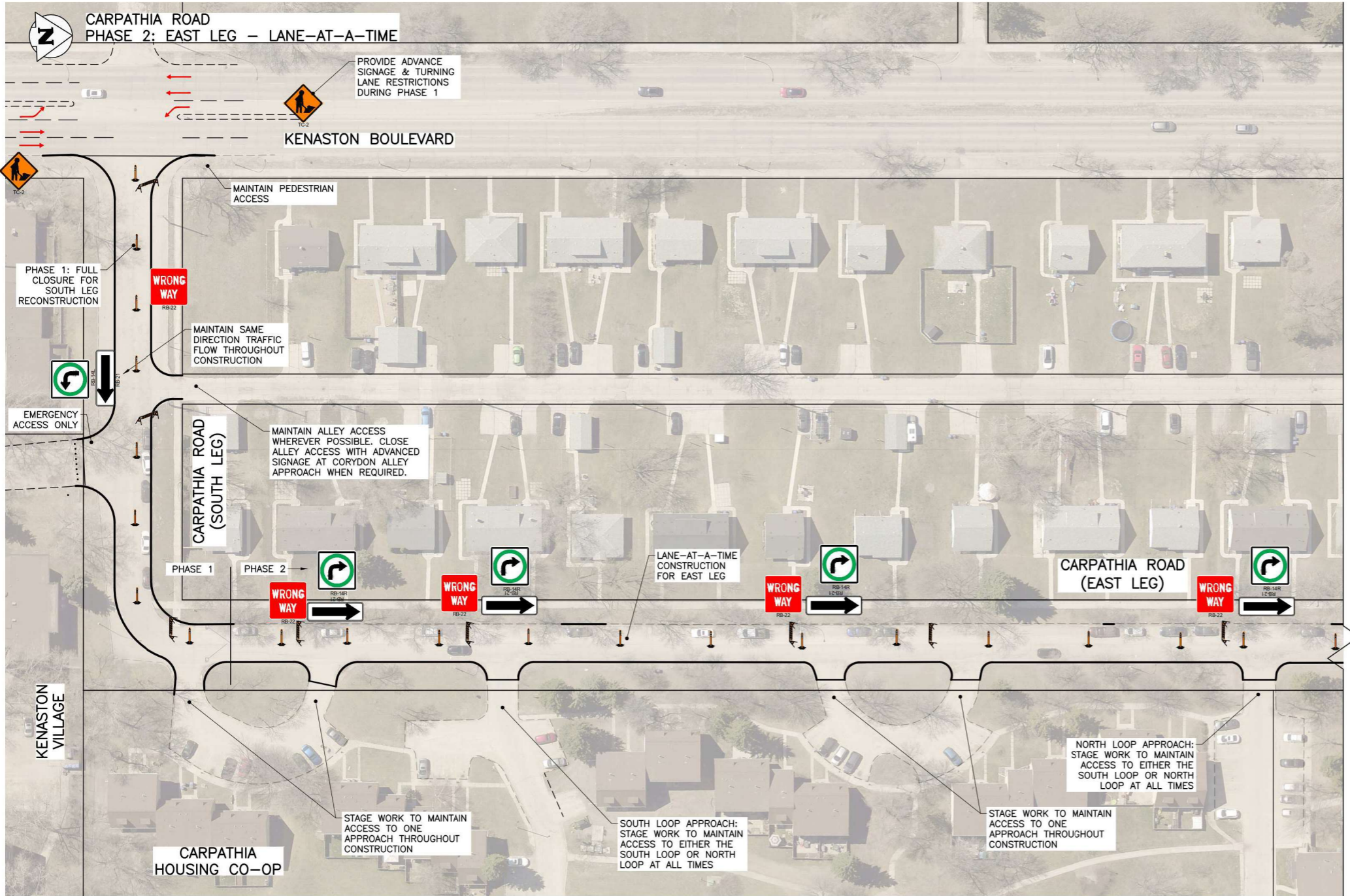
PROPERTY LIMITS DELINEATION
DELINEATION OF PROPERTY LIMITS AS SHOWN ON THIS DWG DOES NOT REPRESENT A "LEGAL SURVEY". KGS GROUP MAKES NO REPRESENTATION OR WARRANTY AS TO THE ACCURACY OF PROPERTY LIMITS DELINEATED ON THIS DWG, NOR ON THE DIMENSIONAL ACCURACY OF DWG FEATURES RELATIVE TO THOSE PROPERTY LIMITS.

METRIC
WHOLE NUMBERS INDICATE MILLIMETRES
DECIMALIZED NUMBERS INDICATE METRES

ISSUED FOR TENDER
NOT TO BE USED FOR CONSTRUCTION

NO.	REVISIONS	DATE	BY
0	ISSUED FOR TENDER	22/04/26	GES

THE CITY OF WINNIPEG PUBLIC WORKS DEPARTMENT ENGINEERING DIVISION		PROJECT TITLE	SHEET OF
		2022 LOCAL STREETS PACKAGE 22-R-04	3 OF 9
		LINTON LANE AC REHABILITATION	COMPUTER FILE NAME 21-0107-016
PHASING & SIGNAGE PLAN		FIGURE	F301



STAGING & SIGNAGE: EAST LEG
SCALE: NTS

- NOTES:**
1. ALL TEMPORARY TRAFFIC CONTROL TO BE IN ACCORDANCE WITH THE LATEST MANUAL OF TEMPORARY TRAFFIC CONTROL ON CITY STREETS (MTC).
 2. PERFORM WORK IN STAGES TO MINIMIZE IMPACT TO TRAFFIC FLOW AND ACCESS TO RESIDENCES.
 3. NOT ALL REQUIRED SIGNAGE IS SHOWN FOR EACH PHASE & SUB-PHASE. THE PERMANENT POSTED SPEED LIMIT OF THE APPLICABLE ROAD SHALL BE USED FOR ALL TAPER LENGTHS AND OTHER CRITERIA IN THE MTC.
 4. CONTRACTOR SHALL SUBMIT THE ACCESSIBILITY PLAN FOR REVIEW AND ACCEPTANCE BY THE CONTRACT ADMINISTRATOR.
 5. CONTRACTOR SHALL BE RESPONSIBLE FOR THE SUPPLY, PLACEMENT AND MAINTENANCE OF ALL TEMPORARY TRAFFIC CONTROL SIGNAGE IN ACCORDANCE WITH THE CONTRACT.
 6. CONTRACTOR SHALL BE RESPONSIBLE FOR ALL PERMITS AND LANE CLOSURE REQUESTS.
 7. ALL LANE CLOSURES REQUIRE APPROVAL OF THE TRAFFIC MANAGEMENT BRANCH.
 8. CONTRACTOR TO PROVIDE FLAGPERSONS IN ACCORDANCE WITH THE MTC WHEN MOVING MATERIALS OR EQUIPMENT INTO OR OUT OF TRAFFIC.
 9. CONTRACTOR SHALL PROVIDE FLAGPERSONS DURING ALL ASPHALT PLACEMENT TO MINIMIZE IMPACT TO TRAFFIC.
 10. WHEN FLAGPERSONS ARE PRESENT SIGNAGE MUST BE PLACED IN ACCORDANCE WITH THE MTC.
 11. WHEN FLAGPERSONS ARE NOT PRESENT THE SIGNAGE MUST BE REMOVED OR HIDDEN.
 12. PROVIDE TEMPORARY RAMPS & CROSSING WHERE DIRECTED BY CONTRACT ADMINISTRATOR AND IN ACCORDANCE WITH THE ACCESSIBILITY PLAN FOR PEDESTRIAN CROSSINGS WHILE PERFORMING WORK IN THE INTERSECTIONS AND APPROACHES.
 13. INSTALL WARNING FLAGS IN ACCORDANCE WITH MTC 3.07.04 ON THE FIRST WARNING SIGN IN EACH LANE DROP TAPER.
 14. PROVIDE SIGNAGE FOR CROSS STREETS IN ACCORDANCE WITH MTC: FIGURE 17.

STAGING & SIGNAGE: SOUTH LEG
SCALE: NTS

PROPERTY LIMITS DELINEATION
DELINEATION OF PROPERTY LIMITS AS SHOWN ON THIS DWG DOES NOT REPRESENT A "LEGAL SURVEY". KGS GROUP MAKES NO REPRESENTATION OR WARRANTY AS TO THE ACCURACY OF PROPERTY LIMITS DELINEATED ON THIS DWG, NOR ON THE DIMENSIONAL ACCURACY OF DWG FEATURES RELATIVE TO THOSE PROPERTY LIMITS.

METRIC
WHOLE NUMBERS INDICATE MILLIMETRES
DECIMALIZED NUMBERS INDICATE METRES

ISSUED FOR TENDER
NOT TO BE USED FOR CONSTRUCTION

NO.	REVISIONS	DATE	BY
0	ISSUED FOR TENDER	22/04/26	GES

THE CITY OF WINNIPEG
PUBLIC WORKS DEPARTMENT
ENGINEERING DIVISION

KGS GROUP

PROJECT TITLE
2022 LOCAL STREETS PACKAGE 22-R-04

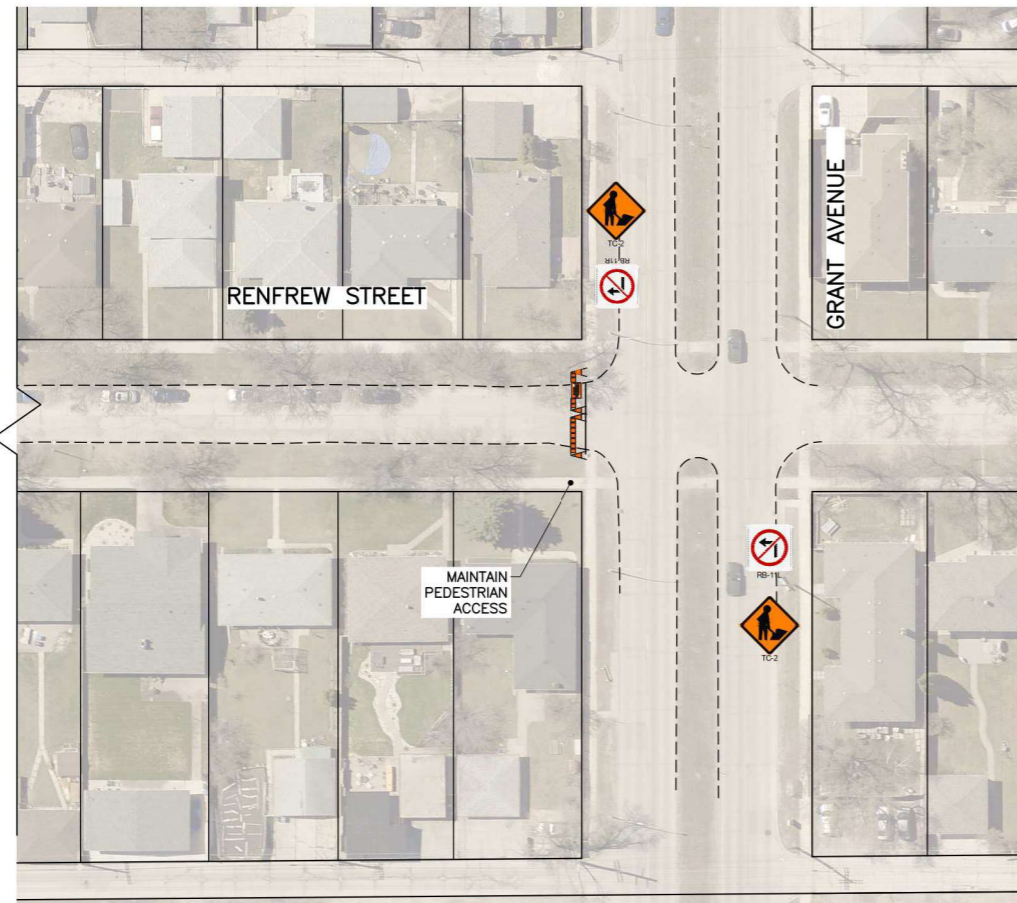
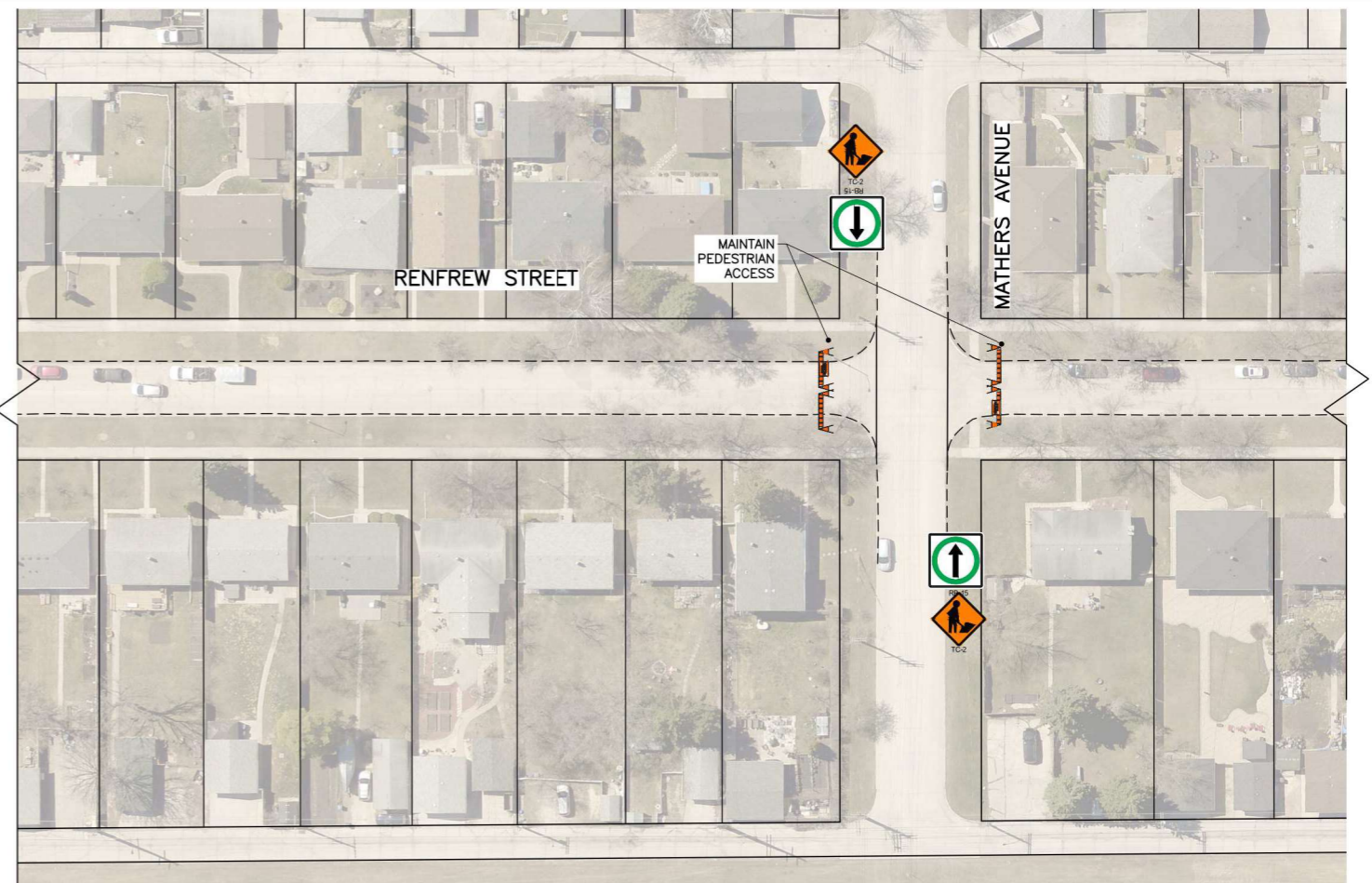
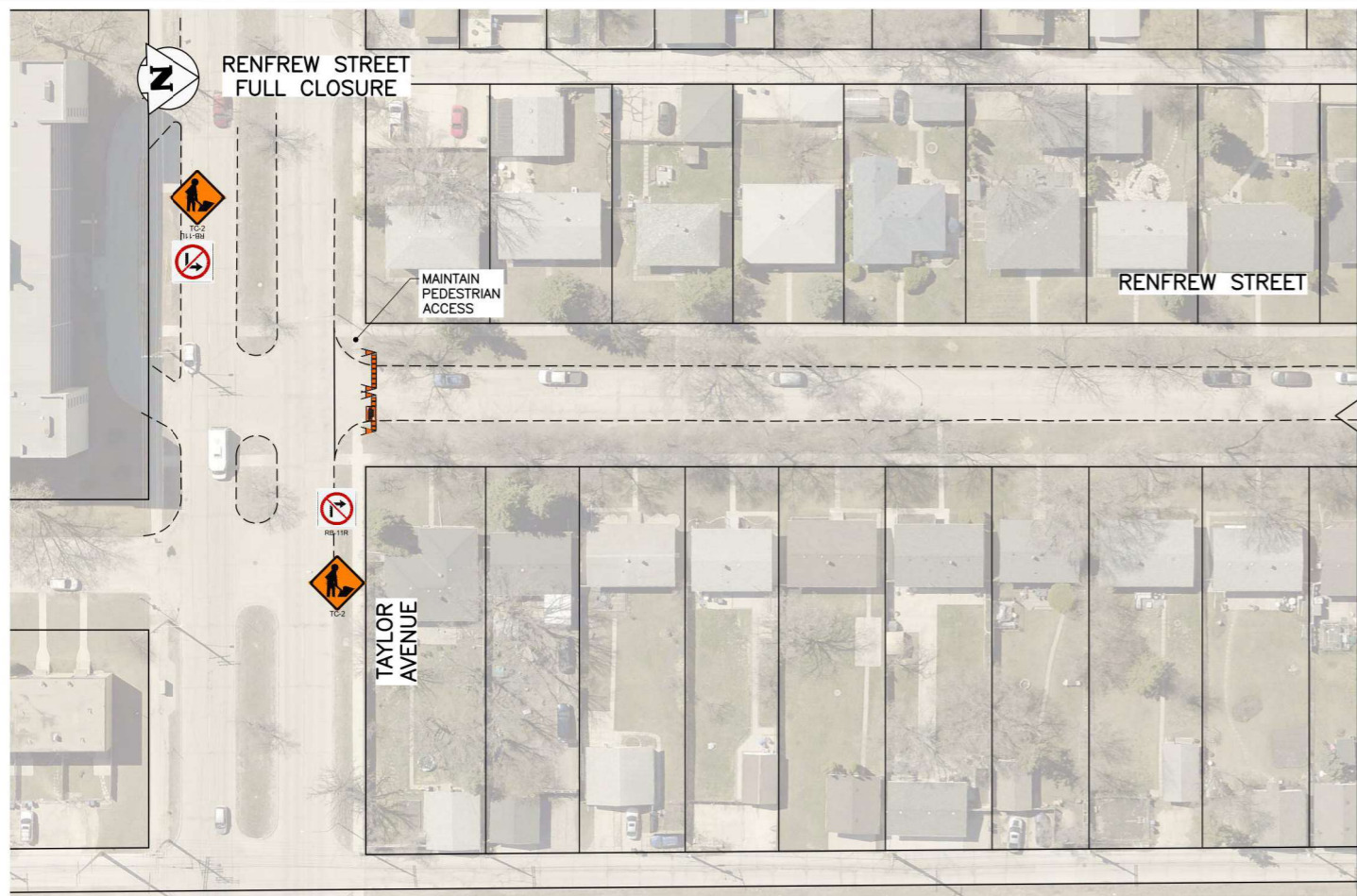
SHEET 4 OF 9

COMPUTER FILE NAME
21-0107-016

FIGURE
F401

CARPATHIA ROAD
SOUTH LEG: RECONSTRUCTION
EAST LEG: MAJOR REHABILITATION
PHASING & SIGNAGE PLAN

P:\PROJECTS\2021\21-0107-016\DWG\MUN\21-0107-016_FALL_SIGNAGE.DWG
PLOT 1:1 (A-1) 2022-04-26



NOTES:

1. ALL TEMPORARY TRAFFIC CONTROL TO BE IN ACCORDANCE WITH THE LATEST MANUAL OF TEMPORARY TRAFFIC CONTROL ON CITY STREETS (MTTC).
2. PERFORM WORK IN STAGES TO MINIMIZE IMPACT TO TRAFFIC FLOW AND ACCESS TO RESIDENCES.
3. NOT ALL REQUIRED SIGNAGE IS SHOWN FOR EACH PHASE & SUB-PHASE.
4. THE PERMANENT POSTED SPEED LIMIT OF THE APPLICABLE ROAD SHALL BE USED FOR ALL TAPER LENGTHS AND OTHER CRITERIA IN THE MTTC.
5. CONTRACTOR SHALL SUBMIT THE ACCESSIBILITY PLAN FOR REVIEW AND ACCEPTANCE BY THE CONTRACT ADMINISTRATOR.
6. CONTRACTOR SHALL BE RESPONSIBLE FOR THE SUPPLY, PLACEMENT AND MAINTENANCE OF ALL TEMPORARY TRAFFIC CONTROL SIGNAGE IN ACCORDANCE WITH THE CONTRACT.
7. CONTRACTOR SHALL BE RESPONSIBLE FOR ALL PERMITS AND LANE CLOSURE REQUESTS.
8. ALL LANE CLOSURES REQUIRE APPROVAL OF THE TRAFFIC MANAGEMENT BRANCH.
9. CONTRACTOR TO PROVIDE FLAGPERSONS IN ACCORDANCE WITH THE MTTC WHEN MOVING MATERIALS OR EQUIPMENT INTO OR OUT OF TRAFFIC.
10. CONTRACTOR SHALL PROVIDE FLAGPERSONS DURING ALL ASPHALT PLACEMENT TO MINIMIZE IMPACT TO TRAFFIC.
11. WHEN FLAGPERSONS ARE PRESENT SIGNAGE MUST BE PLACED IN ACCORDANCE WITH THE MTTC.
12. WHEN FLAGPERSONS ARE NOT PRESENT THE SIGNAGE MUST BE REMOVED OR HIDDEN.
13. PROVIDE TEMPORARY RAMPS & CROSSING WHERE DIRECTED BY CONTRACT ADMINISTRATOR AND IN ACCORDANCE WITH THE ACCESSIBILITY PLAN FOR PEDESTRIAN CROSSINGS WHILE PERFORMING WORK IN THE INTERSECTIONS AND APPROACHES.
14. INSTALL WARNING FLAGS IN ACCORDANCE WITH MTTC 3.07.04 ON THE FIRST WARNING SIGN IN EACH LANE DROP TAPER.
15. PROVIDE SIGNAGE FOR CROSS STREETS IN ACCORDANCE WITH MTTC: FIGURE 17.

P:\PROJECTS\2021\21-0107-016\DWG\MUN\21-0107-016_FALL_SIGNAGE.DWG
PLOT 1:1 (A-1) 2022-04-26

PROPERTY LIMITS DELINEATION
DELINEATION OF PROPERTY LIMITS AS SHOWN ON THIS DWG DOES NOT REPRESENT A "LEGAL SURVEY". KGS GROUP MAKES NO REPRESENTATION OR WARRANTY AS TO THE ACCURACY OF PROPERTY LIMITS DELINEATED ON THIS DWG, NOR ON THE DIMENSIONAL ACCURACY OF DWG FEATURES RELATIVE TO THOSE PROPERTY LIMITS.

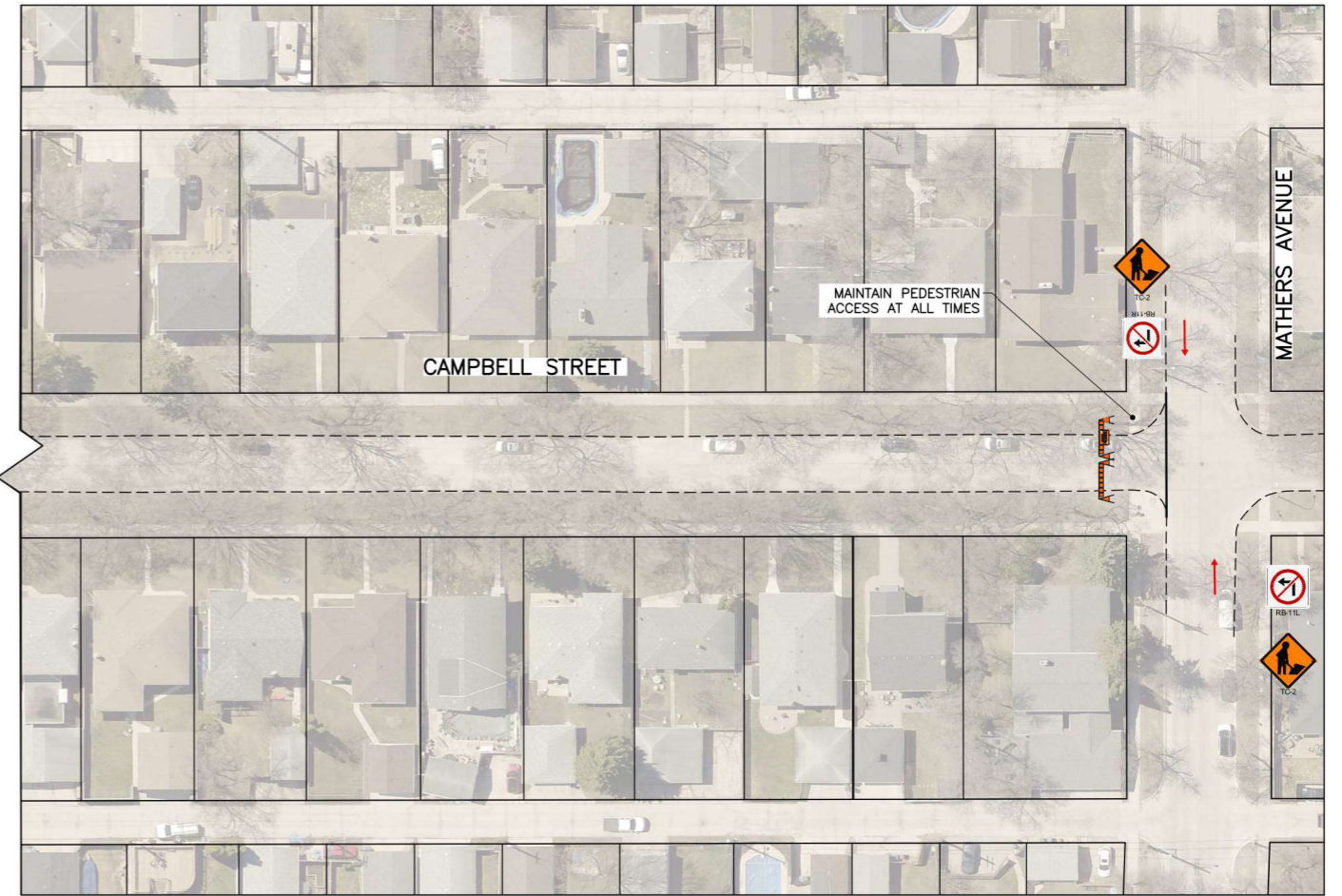
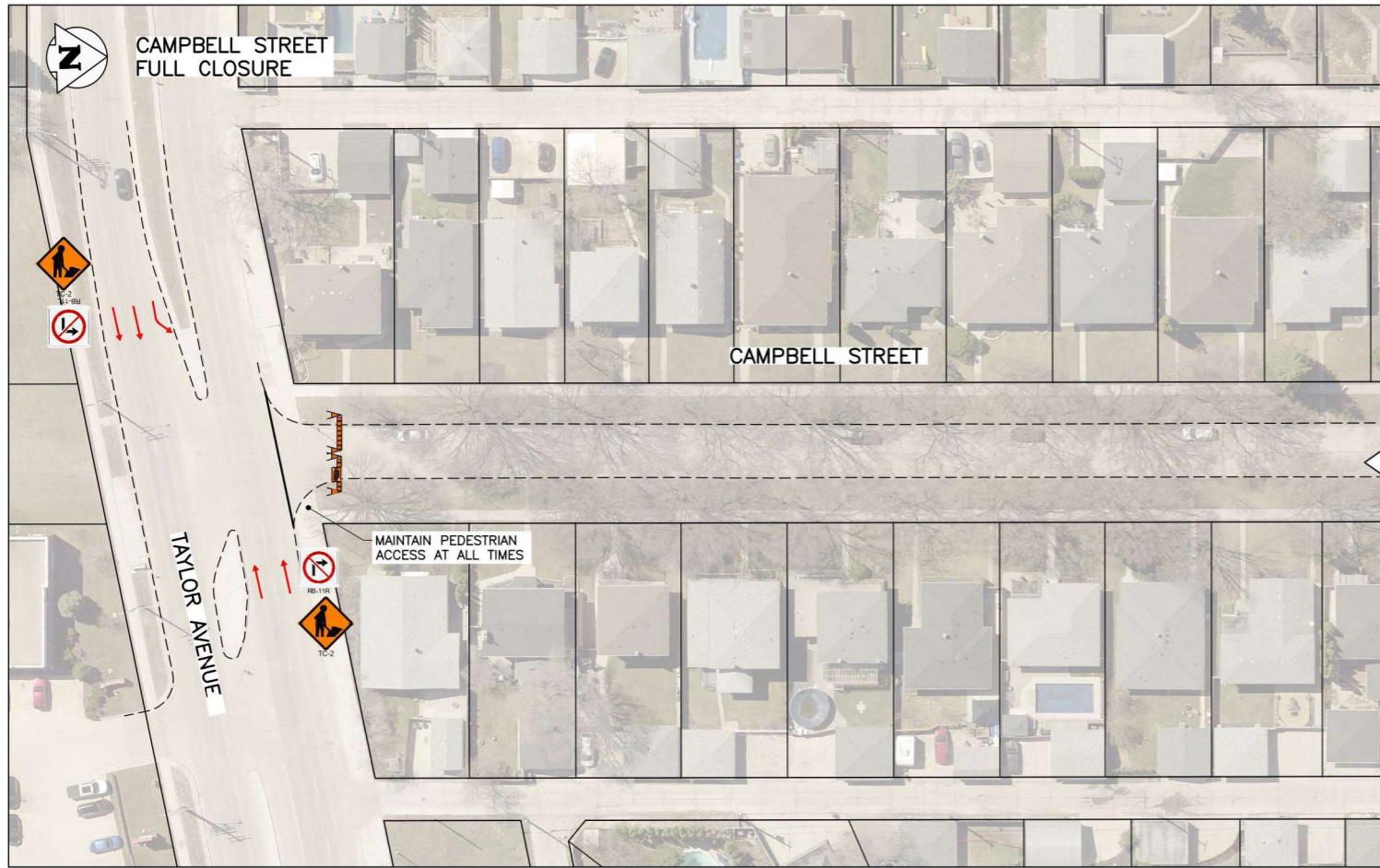
STAGING & SIGNAGE:
SCALE: NTS

METRIC
WHOLE NUMBERS INDICATE MILLIMETRES
DECIMALIZED NUMBERS INDICATE METRES

ISSUED FOR TENDER
NOT TO BE USED FOR CONSTRUCTION

NO.	REVISIONS	DATE	BY
0	ISSUED FOR TENDER	22/04/26	GES

THE CITY OF WINNIPEG PUBLIC WORKS DEPARTMENT ENGINEERING DIVISION		SHEET OF	5 OF 9
		PROJECT TITLE	2022 LOCAL STREETS PACKAGE 22-R-04
		COMPUTER FILE NAME	21-0107-016
RENFREW STREET MAJOR REHABILITATION PHASING & SIGNAGE PLAN		FIGURE	F501



STAGING & SIGNAGE:
SCALE: NTS

SPECIAL ACCESS NOTE:
PROVIDE ACCESS FOR GROUP HOME FOR TRANSIT PLUS OR STAFF FOR PICK-UP & DROP OFF AS DIRECTED.

NOTES:

1. ALL TEMPORARY TRAFFIC CONTROL TO BE IN ACCORDANCE WITH THE LATEST MANUAL OF TEMPORARY TRAFFIC CONTROL ON CITY STREETS (MTC).
2. PERFORM WORK IN STAGES TO MINIMIZE IMPACT TO TRAFFIC FLOW AND ACCESS TO RESIDENCES.
3. NOT ALL REQUIRED SIGNAGE IS SHOWN FOR EACH PHASE & SUB-PHASE.
4. THE PERMANENT POSTED SPEED LIMIT OF THE APPLICABLE ROAD SHALL BE USED FOR ALL TAPER LENGTHS AND OTHER CRITERIA IN THE MTC.
5. CONTRACTOR SHALL SUBMIT THE ACCESSIBILITY PLAN FOR REVIEW AND ACCEPTANCE BY THE CONTRACT ADMINISTRATOR.
6. CONTRACTOR SHALL BE RESPONSIBLE FOR THE SUPPLY, PLACEMENT AND MAINTENANCE OF ALL TEMPORARY TRAFFIC CONTROL SIGNAGE IN ACCORDANCE WITH THE CONTRACT.
7. CONTRACTOR SHALL BE RESPONSIBLE FOR ALL PERMITS AND LANE CLOSURE REQUESTS.
8. ALL LANE CLOSURES REQUIRE APPROVAL OF THE TRAFFIC MANAGEMENT BRANCH.
9. CONTRACTOR TO PROVIDE FLAGPERSONS IN ACCORDANCE WITH THE MTC WHEN MOVING MATERIALS OR EQUIPMENT INTO OR OUT OF TRAFFIC.
10. CONTRACTOR SHALL PROVIDE FLAGPERSONS DURING ALL ASPHALT PLACEMENT TO MINIMIZE IMPACT TO TRAFFIC.
11. WHEN FLAGPERSONS ARE PRESENT SIGNAGE MUST BE PLACED IN ACCORDANCE WITH THE MTC.
12. WHEN FLAGPERSONS ARE NOT PRESENT THE SIGNAGE MUST BE REMOVED OR HIDDEN.
13. PROVIDE TEMPORARY RAMPS & CROSSING WHERE DIRECTED BY CONTRACT ADMINISTRATOR AND IN ACCORDANCE WITH THE ACCESSIBILITY PLAN FOR PEDESTRIAN CROSSINGS WHILE PERFORMING WORK IN THE INTERSECTIONS AND APPROACHES.
14. INSTALL WARNING FLAGS IN ACCORDANCE WITH MTC 3.07.04 ON THE FIRST WARNING SIGN IN EACH LANE DROP TAPER.
15. PROVIDE SIGNAGE FOR CROSS STREETS IN ACCORDANCE WITH MTC: FIGURE 17.

P:\PROJECTS\2021\21-0107-016\DWG\MUN\21-0107-016_FALL_SIGNAGE.DWG
PLOT 1:1 (A-1) 2022-04-26

PROPERTY LIMITS DELINEATION



DELINEATION OF PROPERTY LIMITS AS SHOWN ON THIS DWG DOES NOT REPRESENT A "LEGAL SURVEY". KGS GROUP MAKES NO REPRESENTATION OR WARRANTY AS TO THE ACCURACY OF PROPERTY LIMITS DELINEATED ON THIS DWG, NOR ON THE DIMENSIONAL ACCURACY OF DWG FEATURES RELATIVE TO THOSE PROPERTY LIMITS.

METRIC

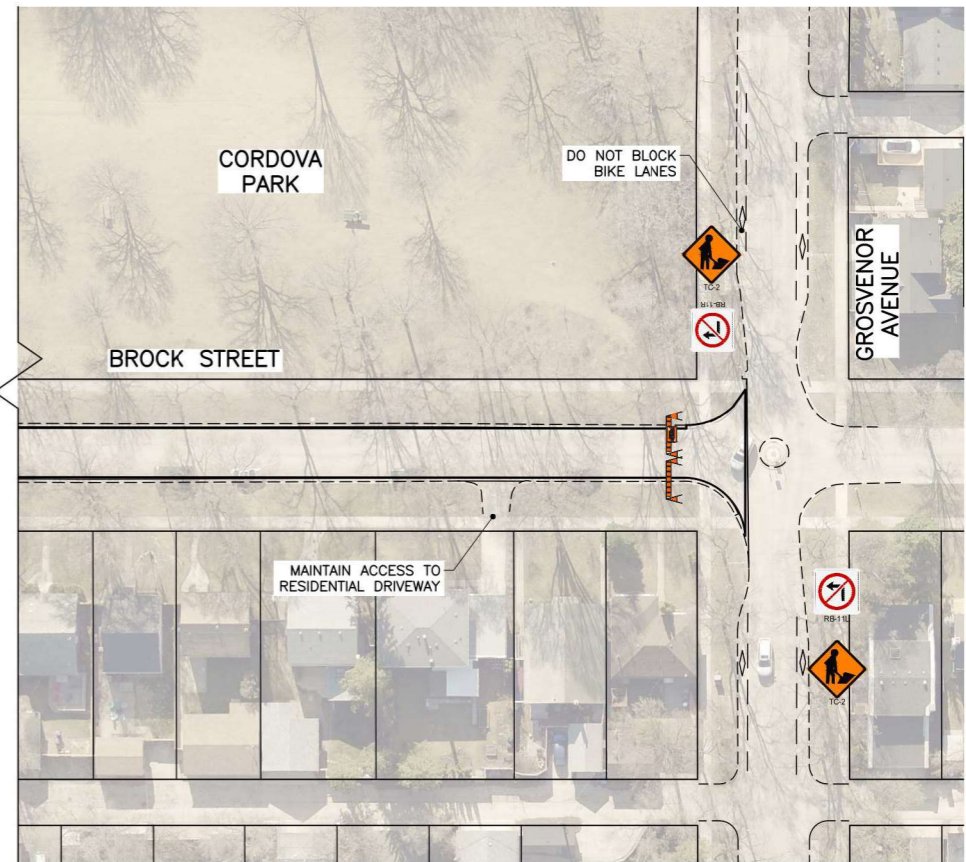
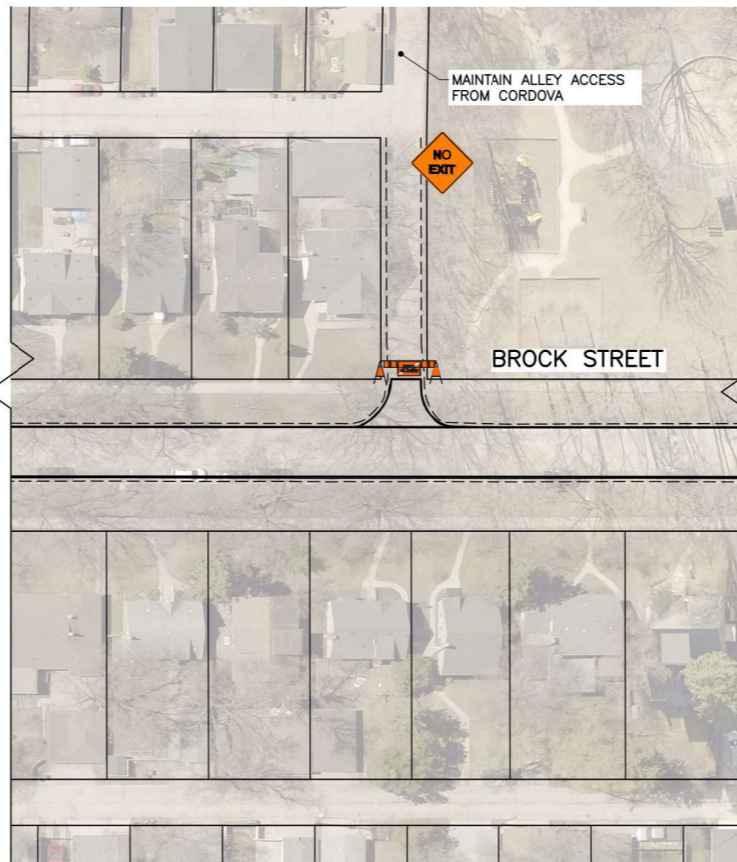
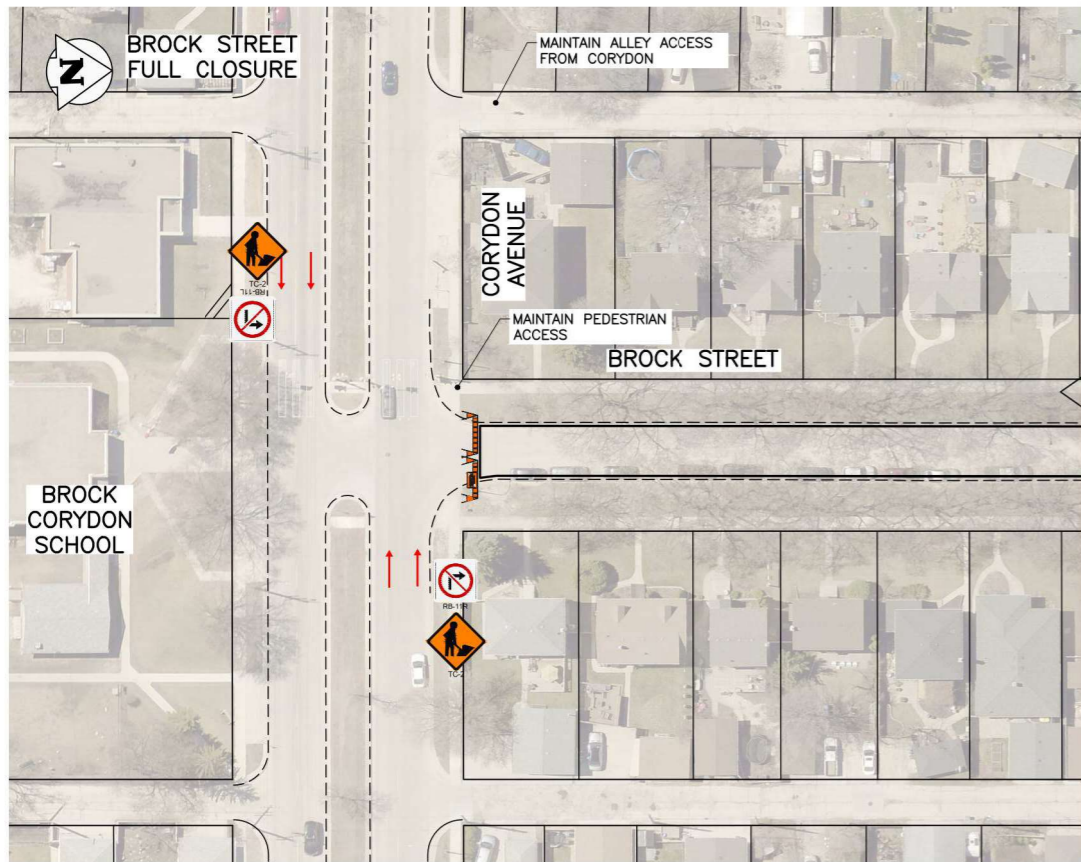
WHOLE NUMBERS INDICATE MILLIMETRES
DECIMALIZED NUMBERS INDICATE METRES

ISSUED FOR TENDER
NOT TO BE USED FOR CONSTRUCTION

NO.	REVISIONS	DATE	BY
0	ISSUED FOR TENDER	22/04/26	GES


THE CITY OF WINNIPEG
 PUBLIC WORKS DEPARTMENT
 ENGINEERING DIVISION
 

PROJECT TITLE	2022 LOCAL STREETS PACKAGE 22-R-04	SHEET OF	6 OF 9
	CAMPBELL ST MAJOR REHABILITATION	COMPUTER FILE NAME	21-0107-016
	PHASING & SIGNAGE PLAN	FIGURE	F601



STAGING & SIGNAGE:
SCALE: NTS

NOTES:

1. ALL TEMPORARY TRAFFIC CONTROL TO BE IN ACCORDANCE WITH THE LATEST MANUAL OF TEMPORARY TRAFFIC CONTROL ON CITY STREETS (MTTC).
2. PERFORM WORK IN STAGES TO MINIMIZE IMPACT TO TRAFFIC FLOW AND ACCESS TO RESIDENCES.
3. NOT ALL REQUIRED SIGNAGE IS SHOWN FOR EACH PHASE & SUB-PHASE.
4. THE PERMANENT POSTED SPEED LIMIT OF THE APPLICABLE ROAD SHALL BE USED FOR ALL TAPER LENGTHS AND OTHER CRITERIA IN THE MTTC.
5. CONTRACTOR SHALL SUBMIT THE ACCESSIBILITY PLAN FOR REVIEW AND ACCEPTANCE BY THE CONTRACT ADMINISTRATOR.
6. CONTRACTOR SHALL BE RESPONSIBLE FOR THE SUPPLY, PLACEMENT AND MAINTENANCE OF ALL TEMPORARY TRAFFIC CONTROL SIGNAGE IN ACCORDANCE WITH THE CONTRACT.
7. CONTRACTOR SHALL BE RESPONSIBLE FOR ALL PERMITS AND LANE CLOSURE REQUESTS.
8. ALL LANE CLOSURES REQUIRE APPROVAL OF THE TRAFFIC MANAGEMENT BRANCH.
9. CONTRACTOR TO PROVIDE FLAGPERSONS IN ACCORDANCE WITH THE MTTC WHEN MOVING MATERIALS OR EQUIPMENT INTO OR OUT OF TRAFFIC.
10. CONTRACTOR SHALL PROVIDE FLAGPERSONS DURING ALL ASPHALT PLACEMENT TO MINIMIZE IMPACT TO TRAFFIC.
11. WHEN FLAGPERSONS ARE PRESENT SIGNAGE MUST BE PLACED IN ACCORDANCE WITH THE MTTC.
12. WHEN FLAGPERSONS ARE NOT PRESENT THE SIGNAGE MUST BE REMOVED OR HIDDEN.
13. PROVIDE TEMPORARY RAMPS & CROSSING WHERE DIRECTED BY CONTRACT ADMINISTRATOR AND IN ACCORDANCE WITH THE ACCESSIBILITY PLAN FOR PEDESTRIAN CROSSINGS WHILE PERFORMING WORK IN THE INTERSECTIONS AND APPROACHES.
14. INSTALL WARNING FLAGS IN ACCORDANCE WITH MTTC 3.07.04 ON THE FIRST WARNING SIGN IN EACH LANE DROP TAPER.
15. PROVIDE SIGNAGE FOR CROSS STREETS IN ACCORDANCE WITH MTTC: FIGURE 17.

P:\PROJECTS\2021\21-0107-016\DWG\MUN\21-0107-016_FALL_SIGNAGE.DWG
PLOT 1:1 (A-1) 2022-04-26

PROPERTY LIMITS DELINEATION
DELINEATION OF PROPERTY LIMITS AS SHOWN ON THIS DWG DOES NOT REPRESENT A "LEGAL SURVEY". KGS GROUP MAKES NO REPRESENTATION OR WARRANTY AS TO THE ACCURACY OF PROPERTY LIMITS DELINEATED ON THIS DWG, NOR ON THE DIMENSIONAL ACCURACY OF DWG FEATURES RELATIVE TO THOSE PROPERTY LIMITS.

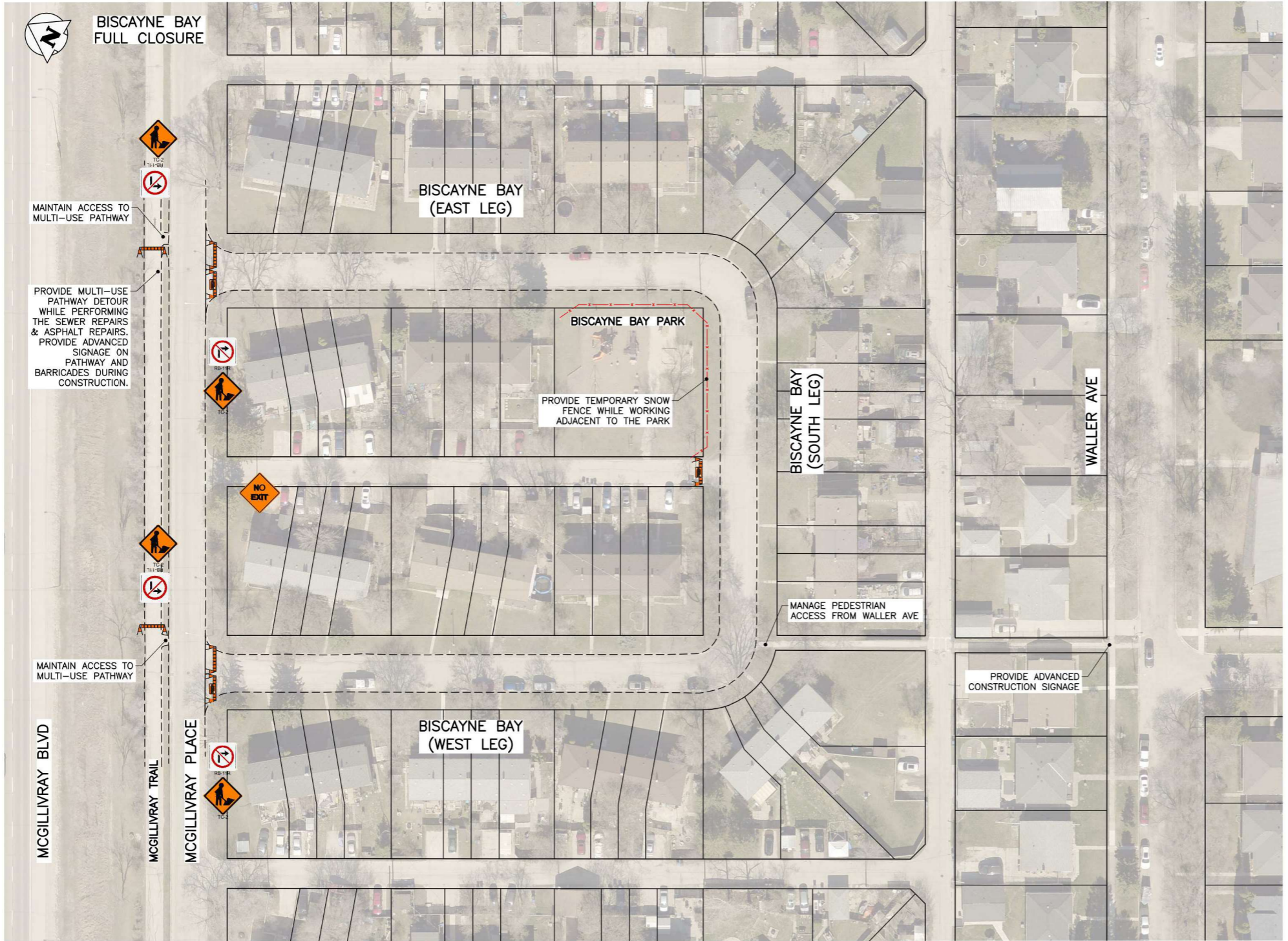
METRIC
WHOLE NUMBERS INDICATE MILLIMETRES
DECIMALIZED NUMBERS INDICATE METRES

ISSUED FOR TENDER
NOT TO BE USED FOR CONSTRUCTION

NO.	REVISIONS	DATE	BY
0	ISSUED FOR TENDER	22/04/26	GES

THE CITY OF WINNIPEG PUBLIC WORKS DEPARTMENT ENGINEERING DIVISION		SHEET	7	OF	9
		PROJECT TITLE	2022 LOCAL STREETS PACKAGE 22-R-04		
BROCK ST AC RESURFACE PHASING & SIGNAGE PLAN					
COMPUTER FILE NAME					21-0107-016
FIGURE					F701

BISCAYNE BAY FULL CLOSURE



- NOTES:**
1. ALL TEMPORARY TRAFFIC CONTROL TO BE IN ACCORDANCE WITH THE LATEST MANUAL OF TEMPORARY TRAFFIC CONTROL ON CITY STREETS (MTTC).
 2. PERFORM WORK IN STAGES TO MINIMIZE IMPACT TO TRAFFIC FLOW AND ACCESS TO RESIDENCES.
 3. NOT ALL REQUIRED SIGNAGE IS SHOWN FOR EACH PHASE & SUB-PHASE.
 4. THE PERMANENT POSTED SPEED LIMIT OF THE APPLICABLE ROAD SHALL BE USED FOR ALL TAPER LENGTHS AND OTHER CRITERIA IN THE MTTC.
 5. CONTRACTOR SHALL SUBMIT THE ACCESSIBILITY PLAN FOR REVIEW AND ACCEPTANCE BY THE CONTRACT ADMINISTRATOR.
 6. CONTRACTOR SHALL BE RESPONSIBLE FOR THE SUPPLY, PLACEMENT AND MAINTENANCE OF ALL TEMPORARY TRAFFIC CONTROL SIGNAGE IN ACCORDANCE WITH THE CONTRACT.
 7. CONTRACTOR SHALL BE RESPONSIBLE FOR ALL PERMITS AND LANE CLOSURE REQUESTS.
 8. ALL LANE CLOSURES REQUIRE APPROVAL OF THE TRAFFIC MANAGEMENT BRANCH.
 9. CONTRACTOR TO PROVIDE FLAGPERSONS IN ACCORDANCE WITH THE MTTC WHEN MOVING MATERIALS OR EQUIPMENT INTO OR OUT OF TRAFFIC.
 10. CONTRACTOR SHALL PROVIDE FLAGPERSONS DURING ALL ASPHALT PLACEMENT TO MINIMIZE IMPACT TO TRAFFIC.
 11. WHEN FLAGPERSONS ARE PRESENT SIGNAGE MUST BE PLACED IN ACCORDANCE WITH THE MTTC.
 12. WHEN FLAGPERSONS ARE NOT PRESENT THE SIGNAGE MUST BE REMOVED OR HIDDEN.
 13. PROVIDE TEMPORARY RAMPS & CROSSING WHERE DIRECTED BY CONTRACT ADMINISTRATOR AND IN ACCORDANCE WITH THE ACCESSIBILITY PLAN FOR PEDESTRIAN CROSSINGS WHILE PERFORMING WORK IN THE INTERSECTIONS AND APPROACHES.
 14. INSTALL WARNING FLAGS IN ACCORDANCE WITH MTTC 3.07.04 ON THE FIRST WARNING SIGN IN EACH LANE DROP TAPER.
 15. PROVIDE SIGNAGE FOR CROSS STREETS IN ACCORDANCE WITH MTTC: FIGURE 17.

STAGING & SIGNAGE:
SCALE: NTS

P:\PROJECTS\2021\21-0107-016\DWG\MUN\21-0107-016_FALL_SIGNAGE.DWG
PLOT 1:1 (A-1) 2022-04-26

PROPERTY LIMITS DELINEATION
DELINEATION OF PROPERTY LIMITS AS SHOWN ON THIS DWG DOES NOT REPRESENT A "LEGAL SURVEY". KGS GROUP MAKES NO REPRESENTATION OR WARRANTY AS TO THE ACCURACY OF PROPERTY LIMITS DELINEATED ON THIS DWG, NOR ON THE DIMENSIONAL ACCURACY OF DWG FEATURES RELATIVE TO THOSE PROPERTY LIMITS.

METRIC
WHOLE NUMBERS INDICATE MILLIMETRES
DECIMALIZED NUMBERS INDICATE METRES

ISSUED FOR TENDER
NOT TO BE USED FOR CONSTRUCTION

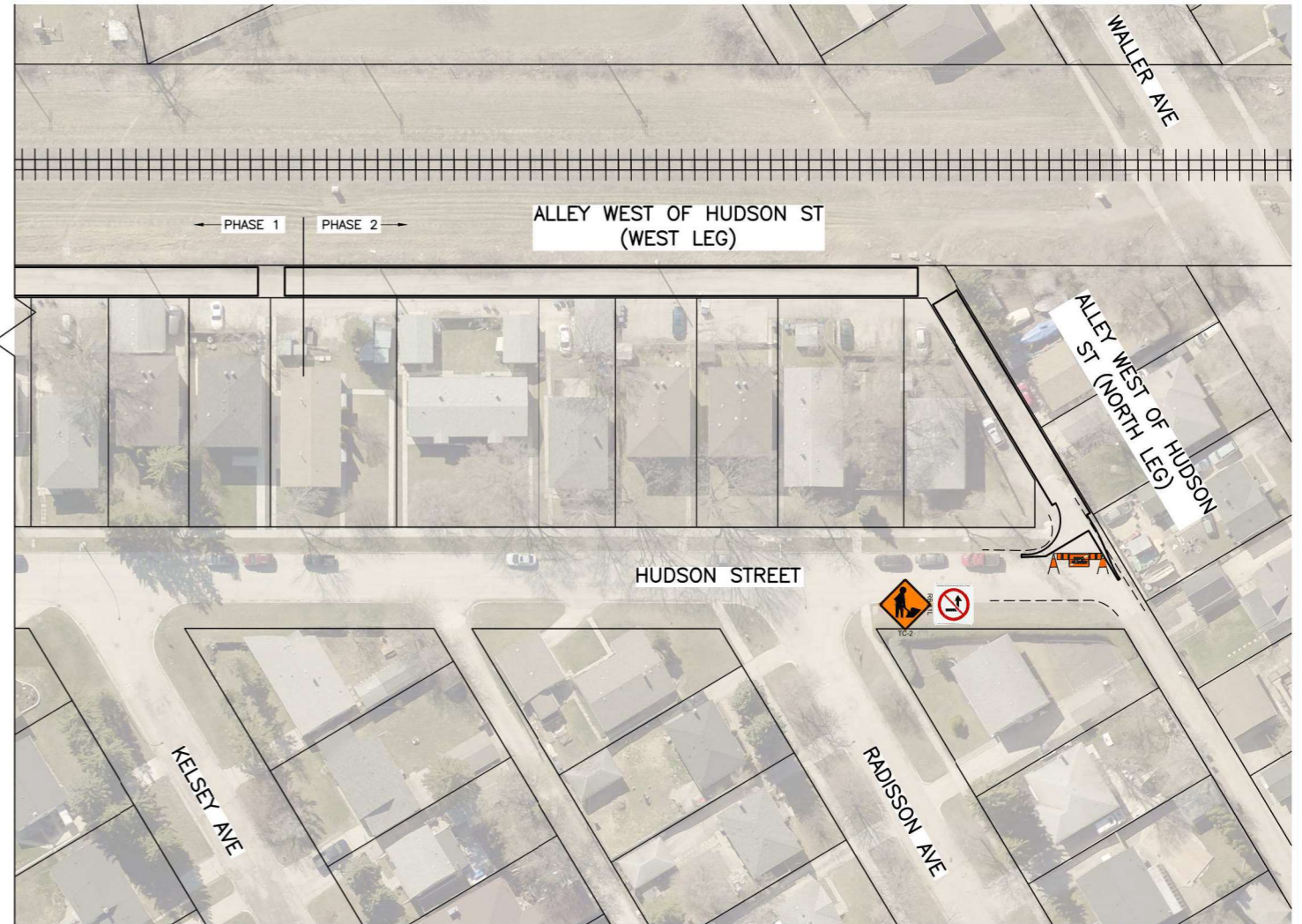
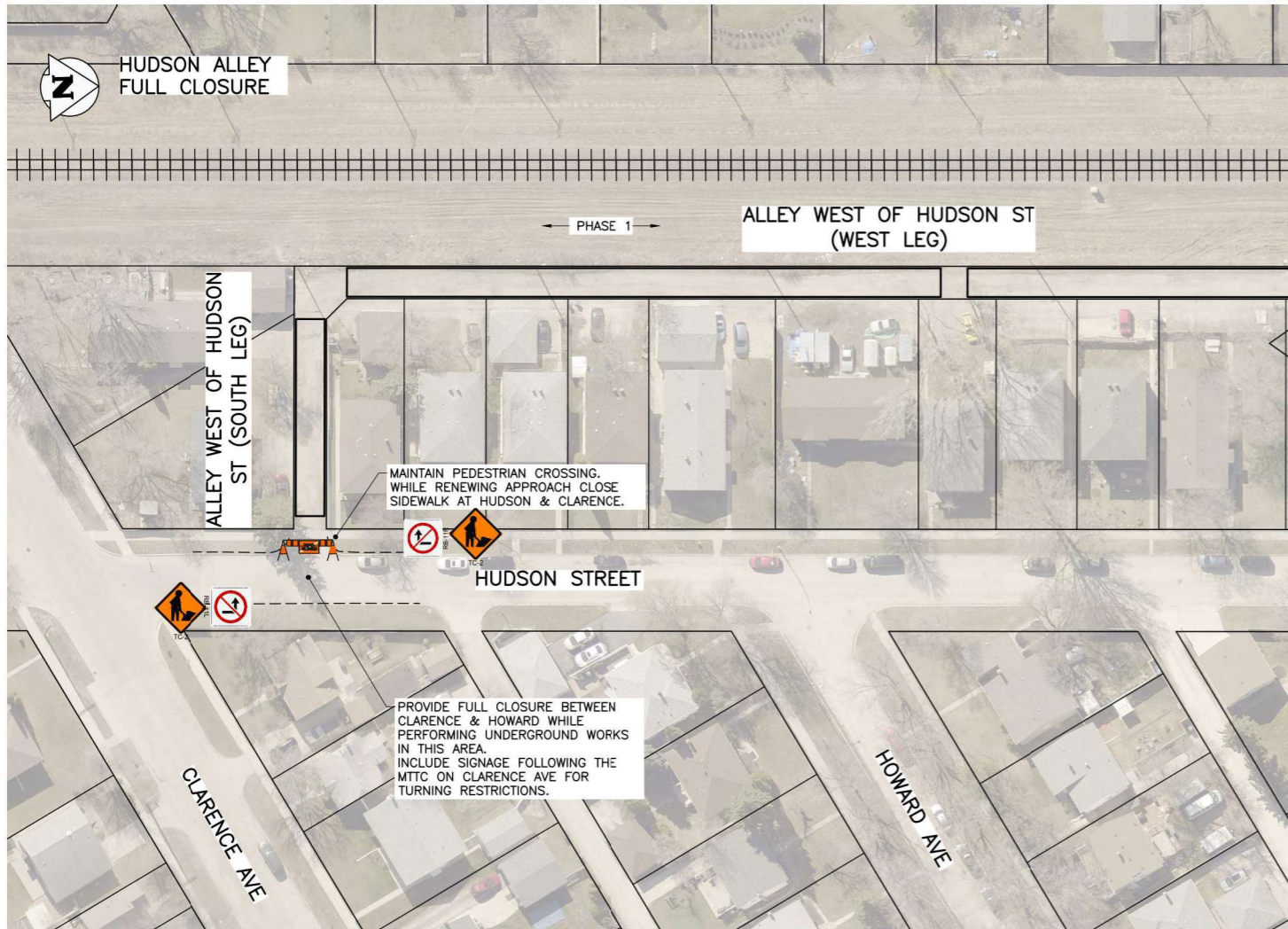
NO.	REVISIONS	DATE	BY
0	ISSUED FOR TENDER	22/04/26	GES

THE CITY OF WINNIPEG
PUBLIC WORKS DEPARTMENT
ENGINEERING DIVISION

Winnipeg **KGS GROUP**

PROJECT TITLE: 2022 LOCAL STREETS PACKAGE 22-R-04
BISCAYNE BAY AC REHABILITATION
PHASING & SIGNAGE PLAN

SHEET 8 OF 9
COMPUTER FILE NAME: 21-0107-016
FIGURE: F801



STAGING & SIGNAGE:
SCALE: NTS

- NOTES:**
1. ALL TEMPORARY TRAFFIC CONTROL TO BE IN ACCORDANCE WITH THE LATEST MANUAL OF TEMPORARY TRAFFIC CONTROL ON CITY STREETS (MTTC).
 2. PERFORM WORK IN STAGES TO MINIMIZE IMPACT TO TRAFFIC FLOW AND ACCESS TO RESIDENCES.
 3. NOT ALL REQUIRED SIGNAGE IS SHOWN FOR EACH PHASE & SUB-PHASE.
 4. THE PERMANENT POSTED SPEED LIMIT OF THE APPLICABLE ROAD SHALL BE USED FOR ALL TAPER LENGTHS AND OTHER CRITERIA IN THE MTTC.
 5. CONTRACTOR SHALL SUBMIT THE ACCESSIBILITY PLAN FOR REVIEW AND ACCEPTANCE BY THE CONTRACT ADMINISTRATOR.
 6. CONTRACTOR SHALL BE RESPONSIBLE FOR THE SUPPLY, PLACEMENT AND MAINTENANCE OF ALL TEMPORARY TRAFFIC CONTROL SIGNAGE IN ACCORDANCE WITH THE CONTRACT.
 7. CONTRACTOR SHALL BE RESPONSIBLE FOR ALL PERMITS AND LANE CLOSURE REQUESTS.
 8. ALL LANE CLOSURES REQUIRE APPROVAL OF THE TRAFFIC MANAGEMENT BRANCH.
 9. CONTRACTOR TO PROVIDE FLAGPERSONS IN ACCORDANCE WITH THE MTTC WHEN MOVING MATERIALS OR EQUIPMENT INTO OR OUT OF TRAFFIC.
 10. CONTRACTOR SHALL PROVIDE FLAGPERSONS DURING ALL ASPHALT PLACEMENT TO MINIMIZE IMPACT TO TRAFFIC.
 11. WHEN FLAGPERSONS ARE PRESENT SIGNAGE MUST BE PLACED IN ACCORDANCE WITH THE MTTC.
 12. WHEN FLAGPERSONS ARE NOT PRESENT THE SIGNAGE MUST BE REMOVED OR HIDDEN.
 13. PROVIDE TEMPORARY RAMPS & CROSSING WHERE DIRECTED BY CONTRACT ADMINISTRATOR AND IN ACCORDANCE WITH THE ACCESSIBILITY PLAN FOR PEDESTRIAN CROSSINGS WHILE PERFORMING WORK IN THE INTERSECTIONS AND APPROACHES.
 14. INSTALL WARNING FLAGS IN ACCORDANCE WITH MTTC 3.07.04 ON THE FIRST WARNING SIGN IN EACH LANE DROP TAPER.
 15. PROVIDE SIGNAGE FOR CROSS STREETS IN ACCORDANCE WITH MTTC: FIGURE 17.

P:\PROJECTS\2021\21-0107-016\DWG\MUN\21-0107-016_FALL_SIGNAGE.DWG
PLOT 1:1 (A-1) 2022-04-26

PROPERTY LIMITS DELINEATION
DELINEATION OF PROPERTY LIMITS AS SHOWN ON THIS DWG DOES NOT REPRESENT A "LEGAL SURVEY". KGS GROUP MAKES NO REPRESENTATION OR WARRANTY AS TO THE ACCURACY OF PROPERTY LIMITS DELINEATED ON THIS DWG, NOR ON THE DIMENSIONAL ACCURACY OF DWG FEATURES RELATIVE TO THOSE PROPERTY LIMITS.

METRIC
WHOLE NUMBERS INDICATE MILLIMETRES
DECIMALIZED NUMBERS INDICATE METRES

ISSUED FOR TENDER
NOT TO BE USED FOR CONSTRUCTION

NO.	REVISIONS	DATE	BY
0	ISSUED FOR TENDER	22/04/26	GES

THE CITY OF WINNIPEG
PUBLIC WORKS DEPARTMENT
ENGINEERING DIVISION

KGS GROUP

PROJECT TITLE
2022 LOCAL STREETS PACKAGE 22-R-04

SHEET 9 OF 9

COMPUTER FILE NAME
21-0107-016

FIGURE
F901

ALLEY WEST OF HUDSON
AC RECONSTRUCTION
PHASING & SIGNAGE PLAN