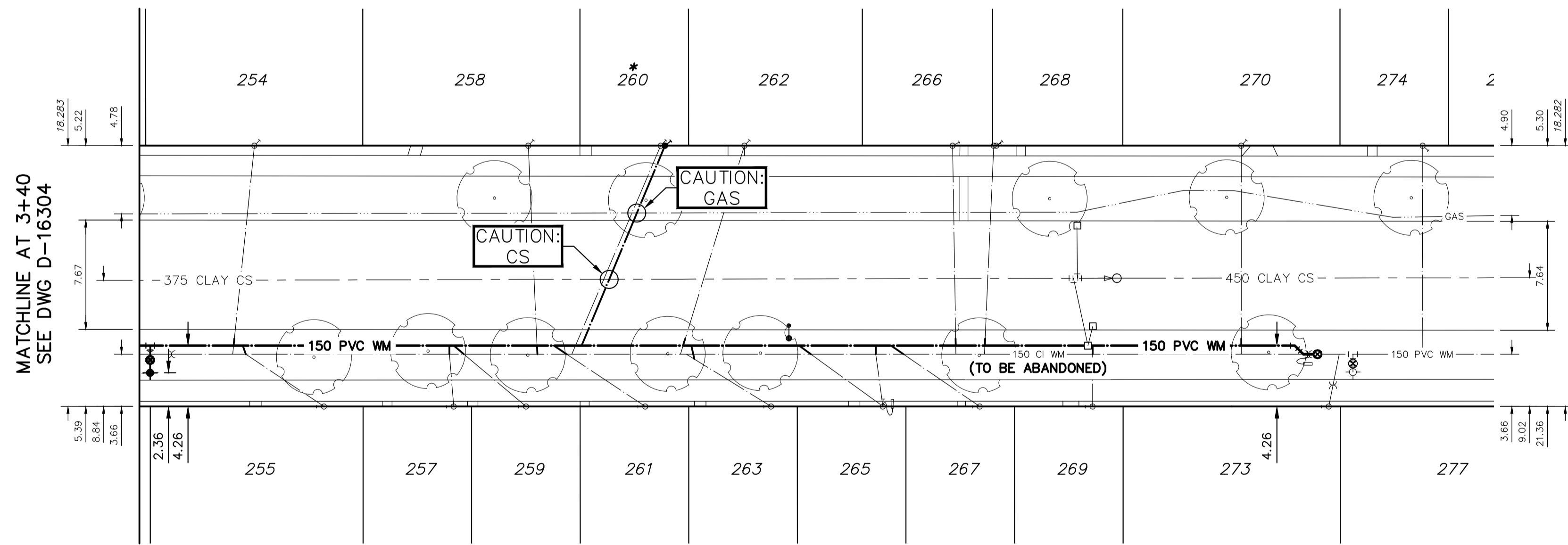


NOTE: CHAINAGES SHOWN ARE ALONG E. P. OF COLLEGIATE STREET

COLLEGIATE STREET



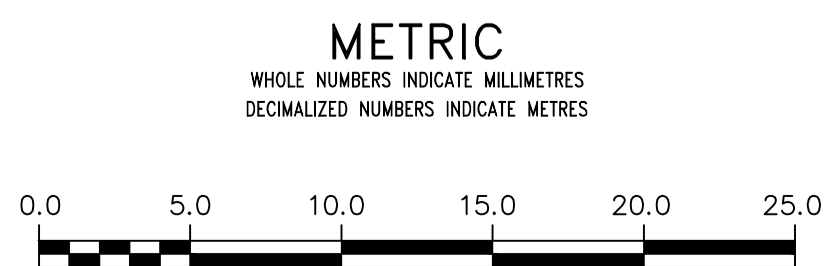
WATER SERVICE INFORMATION

ADDRESS	SIZE (mm) MATERIAL (STREET)	SIZE (mm) MATERIAL (PROP.)	SHORT & LONG MEASUREMENT	CORP. LOCATION	REMARKS
254 COLLEGIATE ST	20 CU	20 CU	4'S N/SIDE BLDG	5' S OF S/C	RECONNECT SERVICE
255 COLLEGIATE ST	UNKN CU	UNKN CU	32'N 3RD HYD N PORTAGE	30' FROM HYDT	RECONNECT SERVICE
257 COLLEGIATE ST	UNKN CU	UNKN CU	48' N 3RD HYD N PORTAGE	UNKN	RECONNECT SERVICE
258 COLLEGIATE ST	UNKN CU	UNKN CU	2' SNL BLDG	UNKN	RECONNECT SERVICE
258 COLLEGIATE ST	UNKN CU	UNKN CU	76.5' N 3RD HYD N PORTAGE	UNKN	RECONNECT SERVICE
258 COLLEGIATE ST	UNKN CU	UNKN CU	5' S N SIDE BLDG	UNKN	RECONNECT SERVICE
259 COLLEGIATE ST	UNKN CU	UNKN CU	9'N OF SL BLDG	80' FROM HYDT	RECONNECT SERVICE
260 COLLEGIATE ST	UNKN LEAD	UNKN LEAD	16.5' N S SIDE BLDG	105' FROM HYDT	RENEW SERVICE
261 COLLEGIATE ST	UNKN UNKN	UNKN UNKN	7.5' S N SIDE BLDG	105' FROM HYDT	RECONNECT SERVICE
262 COLLEGIATE ST	UNKN UNKN	UNKN UNKN	7.5' S N SIDE BLDG	130' FROM HYDT	RECONNECT SERVICE
263 COLLEGIATE ST	UNKN UNKN	UNKN UNKN	3'S OF N/SIDE BLDG	130' FROM HYDT	RECONNECT SERVICE
265 COLLEGIATE ST	UNKN CU	UNKN CU	5.0m NSBL #265	0.5m S OF S/C	RECONNECT SERVICE
266 COLLEGIATE ST	UNKN CU	UNKN CU	6.0m NSBL #265 COLLEGIATE	28.1m S HYD OPP #274	RECONNECT SERVICE
267 COLLEGIATE ST	UNKN UNKN	UNKN UNKN	1.5m SNBL	180' FROM HYD	RECONNECT SERVICE
268 COLLEGIATE ST	UNKN UNKN	UNKN UNKN	5' S N SIDE BLDG	26.1m S HYD OPP #274	RECONNECT SERVICE
269 COLLEGIATE ST	UNKN UNKN	UNKN UNKN	1.1m SSBL	UNKN	RECONNECT SERVICE
270 COLLEGIATE ST	UNKN CU	UNKN CU	4' SNL BLDG	OPP S/C	RECONNECT SERVICE
270 COLLEGIATE ST	UNKN UNKN	UNKN UNKN	7.5' N S SIDE HSE	UNKN	RECONNECT SERVICE

\*SERVICES TO BE RENEWED TO P. ALL OTHERS TO BE RECONNECTED



NOTE: ALL VALVES TO BE INSTALLED COUNTERCLOCKWISE TO CLOSE



**WARNING**  
IF POWER EQUIPMENT OR EXPLOSIVES ARE TO BE USED FOR EXCAVATION ON THIS PROJECT THE CONTRACTOR MUST:  
1) NOTIFY THE GAS COMPANY OF THE PROPOSED LOCATION OF EXCAVATION.  
2) TAKE PRECAUTION TO AVOID DAMAGE TO GAS COMPANY INSTALLATIONS.  
SEE PROVINCIAL REGULATION 210/72 FOR DETAILS

**LOCATION APPROVED UNDERGROUND STRUCTURES**  
SUPV. U/G STRUCTURES COMMITTEE DATE  
NOTE:  
LOCATION OF UNDERGROUND STRUCTURES AS SHOWN ARE BASED ON THE BEST INFORMATION AVAILABLE BUT NO GUARANTEE IS GIVEN THAT ALL EXISTING UTILITIES ARE SHOWN OR THAT THE GIVEN LOCATIONS ARE EXACT. CONFIRMATION OF EXISTENCE AND EXACT LOCATION OF ALL SERVICES MUST BE OBTAINED FROM THE INDIVIDUAL UTILITIES BEFORE PROCEEDING WITH CONSTRUCTION.

B.M. ELEV.	NO.	REVISIONS	DATE	BY
	C	ISSUED FOR TENDER	14/04/22	K.G.
	B	DETAILED DESIGN SUBMISSION	08/04/22	K.G.
	A	PRELIMINARY DESIGN SUBMISSION	07/03/22	K.G.

**wsp**  
1600 Buffalo Place  
Winnipeg, Manitoba  
R3T 6B8 Canada  
Phone: 204-477-6650  
wsp.com

DESIGNED BY: K.G. CHECKED BY: S.M.  
DRAWN BY: K.G. APPROVED BY: S.M.  
RELEASED FOR CONSTRUCTION  
DATE: 2022 04 14

ENGINEER'S SEAL  
S.C. MINTY  
PROFESSIONAL ENGINEER  
2022-04-14  
CONSULTANT DRAWING NUMBER  
221-01146-00-07

**THE CITY OF WINNIPEG**  
WATER AND WASTE DEPARTMENT  
ENGINEERING DIVISION  
2022 WATER MAIN RENEWALS – CONTRACT 9  
COLLEGIATE STREET  
240.0M NNL PORTAGE AVENUE  
322.6.0M NNL PORTAGE AVENUE

SHEET 07 OF 11  
CITY DRAWING NUMBER  
D-16305