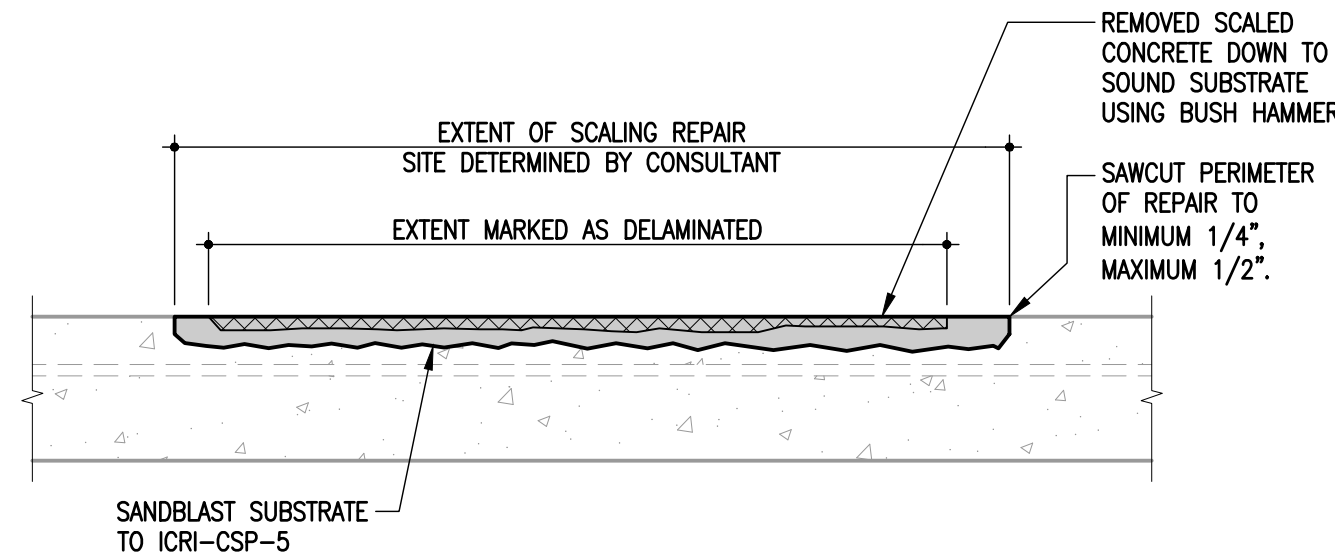


**1 SECTION**

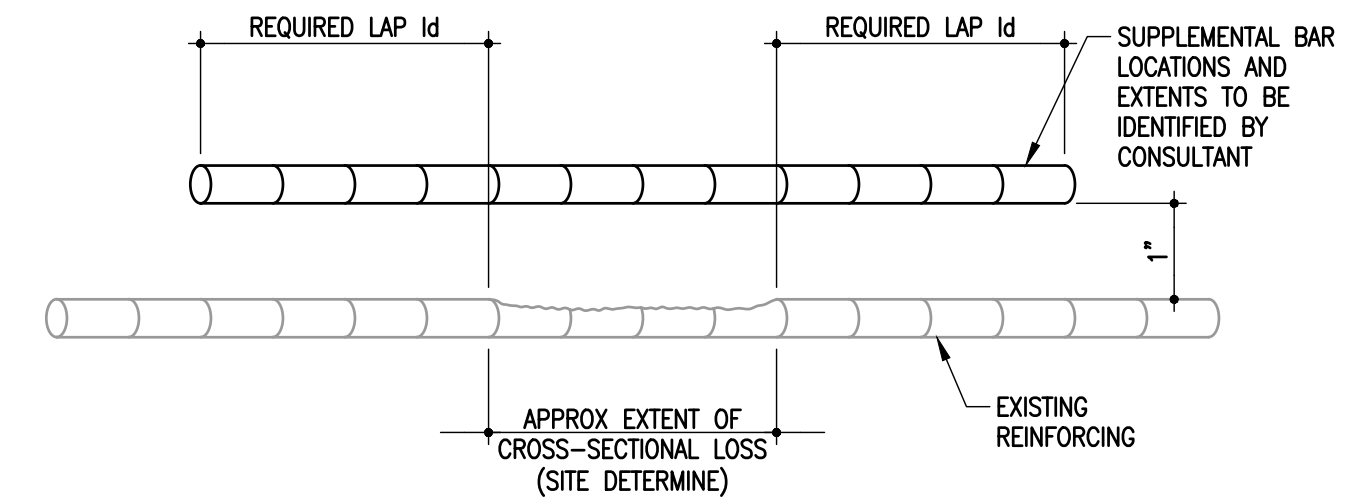
S2.1 S4.1 N.T.S. (FIXED PRICE)

- PRIOR TO DEMO, CONFIRM PRESENCE OF ANY EXISTING CONDUITS
- COMPLETE FULL DEPTH SAWCUTTING OF SLAB REPLACEMENT AREA.
- EXISTING DETERIORATED SLAB TO REMAIN IN PLACE UNTIL SLAB IS PLANNED TO BE INFILLED.
- LOCALIZED REMOVAL OF SLAB ON GRADE SECTION, GRADE PREPARATION, AND INFILL OF SLAB TO TAKE PLACE OVERNIGHT.
- COMPACTION TESTING TO BE COMPLETED UNDER MATERIALS TESTING CASH ALLOWANCE.



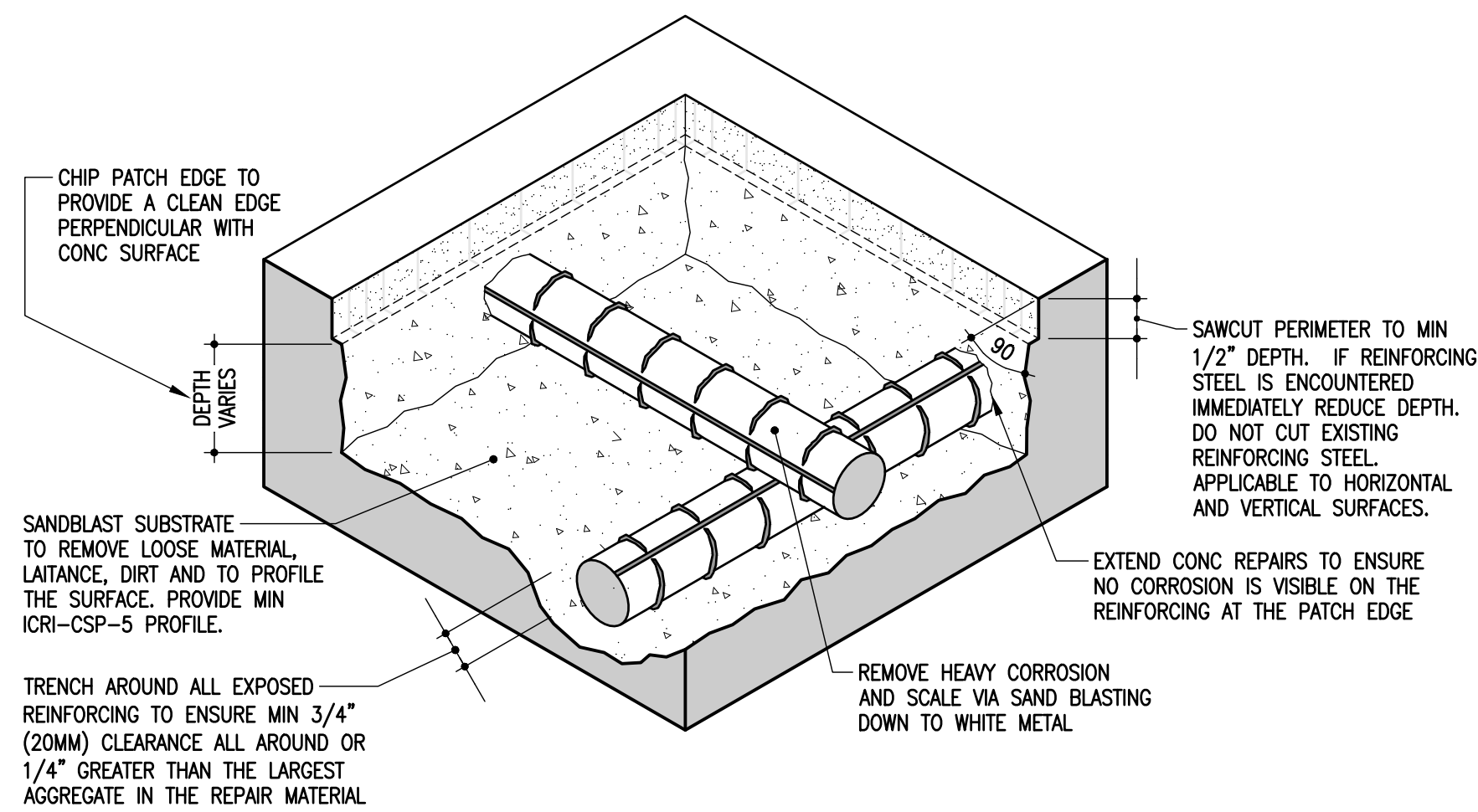
**2 TYPICAL SCALING REPAIR DETAIL**

- S4.1 N.T.S. (UNIT PRICE PER SQ. FT.)



**3 REINFORCING BAR SPLICE DETAIL**

- S4.1 N.T.S. (UNIT PRICE PER LB.)



**4 TYPICAL SURFACE PREPARATION OF DELAMINATED CONCRETE**

- S4.1 N.T.S.

The General Contractor shall check & verify all dimensions and report any errors or omissions to the designers.

A	2022-04-28	ISSUED FOR CLIENT REVIEW	PDG
No.	Date	Issue/Revision	By

**ENGINEERS GEOSCIENTISTS MANITOBA**  
 Certificate of Authorization  
 Crosier Kilgour & Partners Ltd.  
 No. 235



Consultant

300-275 Carlton Street  
 Winnipeg, Manitoba R3C 5R6  
 T 204-943-7501  
 F 204-943-7507

**Crosier Kilgour & Partners Ltd.**  
 CONSULTING STRUCTURAL ENGINEERS

Project  
**WINNIPEG TRANSIT**  
 PARKING GARAGE  
 2022 SLAB REPAIRS  
 421 OSBORNE STREET  
 WINNIPEG, MB

Sheet Title  
 TYPICAL REPAIR DETAILS

File 2021-1422 Date 2022-06-08

Design PDG Drawn MAS

Revision 0 Sheet No. S4.1