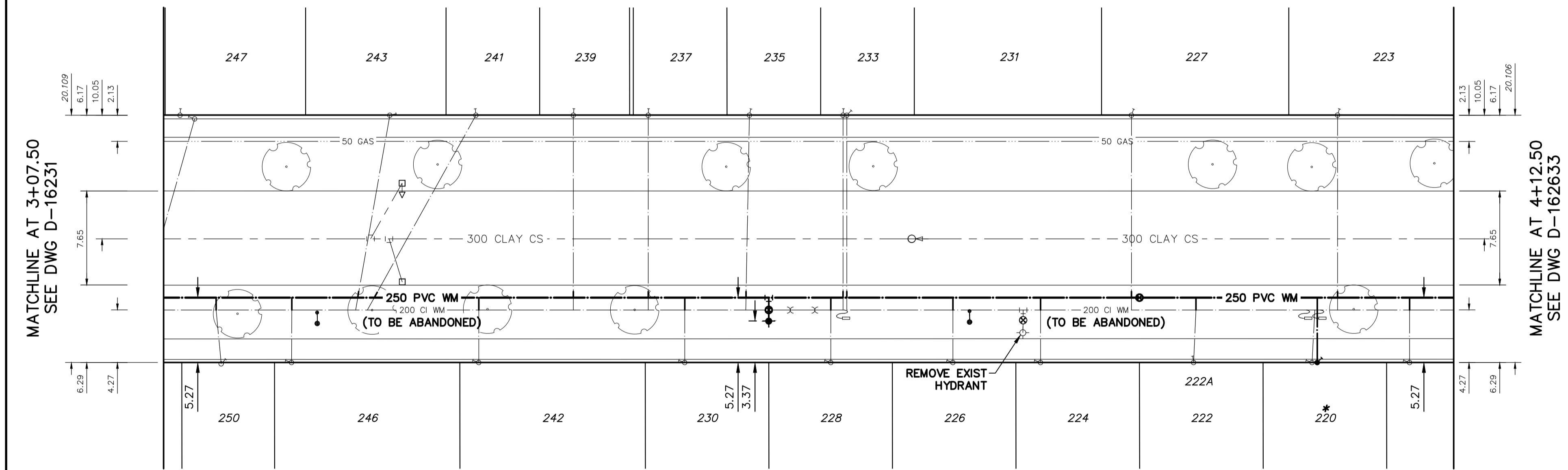


NOTE: CHAINAGES SHOWN ARE ALONG S. R. OF HARTFORD AVE

HARTFORD AVENUE

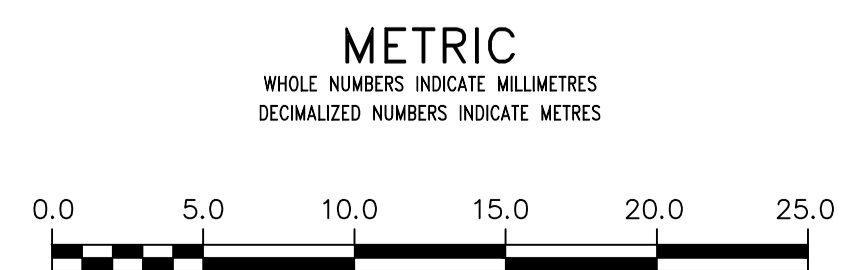


WATER SERVICE INFORMATION

ADDRESS	SIZE (mm) MATERIAL (STREET)	SIZE (mm) MATERIAL (PROP.)	SHORT & LONG MEASUREMENT	CORP. LOCATION	REMARKS
*220 HARTFORD AVE RESIDENTIAL	12 UNKN	8.1' WEL OF HSE	300' WWL OF MAIN	OPP OF S/C	RENEW SERVICE
222 HARTFORD AVE RESIDENTIAL	20 CU	20 UNKN	4.4m EWLL	4.6m EWLL	RECONNECT SERVICE
223 HARTFORD AVE RESIDENTIAL	20 CU	20 UNKN	11' E/WHL	OPP OF S/C	RECONNECT SERVICE
224 HARTFORD AVE RESIDENTIAL	UNKN UNKN	UNKN UNKN	4.1' EWL OF HSE 254' EEL OF AIKINS	UNKN	RECONNECT SERVICE
226 HARTFORD AVE RESIDENTIAL	UNKN UNKN	20 UNKN	1.7 M E/WBL 4.9 M E/WLL	UNKN	RECONNECT SERVICE
227 HARTFORD AVE RESIDENTIAL	UNKN UNKN	12 UNKN	2.2' WWL OF HSE 308' EEL OF AIKINS	UNKN	RECONNECT SERVICE
228 HARTFORD AVE RESIDENTIAL	UNKN UNKN	UNKN UNKN	7.5' WEL OF HSE 198' EEL OF AIKINS	UNKN	RECONNECT SERVICE
230 HARTFORD AVE RESIDENTIAL	UNKN UNKN	20 UNKN	2' EWL OF HSE 159' EEL OF AIKINS	OPP OF S/C	RECONNECT SERVICE
231 HARTFORD AVE RESIDENTIAL	UNKN UNKN	20 UNKN	6' EWL OF HSE 231' EEL OF AIKINS	OPP OF S/C	RECONNECT SERVICE
233 HARTFORD AVE RESIDENTIAL	UNKN UNKN	20 UNKN	5.5' EWL OF HSE 231' EEL OF AIKINS	OPP OF S/C	RECONNECT SERVICE
235 HARTFORD AVE RESIDENTIAL	UNKN UNKN	20 UNKN	1.0' WEL OF HSE 1.0' W OF S/C	1.0' W OF S/C	RECONNECT SERVICE
237 HARTFORD AVE RESIDENTIAL	UNKN UNKN	UNKN UNKN	1' EWL OF HSE 179' EEL OF AIKINS	UNKN	RECONNECT SERVICE
239 HARTFORD AVE RESIDENTIAL	UNKN UNKN	UNKN UNKN	6.2' EWL OF HSE 159' EEL OF AIKINS	UNKN	RECONNECT SERVICE
241 HARTFORD AVE RESIDENTIAL	UNKN UNKN	20 UNKN	4' EWL OF HSE 133' EEL OF AIKINS	104' EEL AIKINS	RECONNECT SERVICE
242 HARTFORD AVE RESIDENTIAL	UNKN UNKN	UNKN UNKN	2.1' EWL OF HSE 104' EEL OF AIKINS	UNKN	RECONNECT SERVICE
243 HARTFORD AVE RESIDENTIAL	UNKN UNKN	20 UNKN	7' EWL OF HSE 110' EEL OF AIKINS	UNKN	RECONNECT SERVICE
246 HARTFORD AVE RESIDENTIAL	UNKN UNKN	20 UNKN	2.2' EWL OF HSE 54' EEL OF AIKINS	UNKN	RECONNECT SERVICE
247 HARTFORD AVE RESIDENTIAL	UNKN UNKN	20 UNKN	UNKN UNKN	UNKN	RECONNECT SERVICE
250 HARTFORD AVE RESIDENTIAL	UNKN UNKN	20 UNKN	3.2m E/WLL UNKN	2.8m E/WLL	RECONNECT SERVICE

*SERVICES TO BE RENEWED TO R. ALL OTHERS TO BE RECONNECTED

NOTE: ALL VALVES TO BE INSTALLED COUNTERCLOCKWISE TO CLOSE



WARNING
IF POWER EQUIPMENT OR EXPLOSIVES ARE TO BE USED FOR EXCAVATION ON THIS PROJECT THE CONTRACTOR MUST:
1) NOTIFY THE GAS COMPANY OF THE PROPOSED LOCATION OF EXCAVATION.
2) TAKE PRECAUTION TO AVOID DAMAGE TO GAS COMPANY INSTALLATIONS.
SEE PROVINCIAL REGULATION 21072 FOR DETAILS

LOCATION APPROVED UNDERGROUND STRUCTURES
SUPV. U/G STRUCTURES COMMITTEE DATE
NOTE:
LOCATION OF UNDERGROUND STRUCTURES AS SHOWN ARE BASED ON THE BEST INFORMATION AVAILABLE BUT NO GUARANTEE IS GIVEN THAT ALL EXISTING UTILITIES ARE SHOWN OR THAT THE GIVEN LOCATIONS ARE EXACT. CONFIRMATION OF EXISTENCE AND EXACT LOCATION OF ALL SERVICES MUST BE OBTAINED FROM THE INDIVIDUAL UTILITIES BEFORE PROCEEDING WITH CONSTRUCTION.

B.M. ELEV.	NO.	REVISIONS	DATE	BY
	C	ISSUED FOR TENDER	11/04/22	KG
	B	DETAILED DESIGN SUBMISSION	25/03/22	KG
	A	PRELIMINARY DESIGN SUBMISSION	01/03/22	KG

wsp
1600 Buffalo Place
Winnipeg, Manitoba
R3T 6B8 Canada
Phone: 204-477-6650
wsp.com

DESIGNED BY: K.G.	CHECKED BY: S.M.
DRAWN BY: K.G.	APPROVED BY: S.M.
DATE: 2022 04 11	RELEASED FOR CONSTRUCTION DATE:

ENGINEER'S SEAL
S.C. MINTY
PROFESSIONAL ENGINEER
2022-04-12
CONSULTANT DRAWING NUMBER
221-00922-00-05

THE CITY OF WINNIPEG
WATER AND WASTE DEPARTMENT
ENGINEERING DIVISION
2022 WATER MAIN RENEWALS - CONTRACT 6
SHEET 05 OF 12
CITY DRAWING NUMBER
D-16232
HARTFORD AVENUE
6.0M EEL OF AIKINS STREET TO
80.0M WWL OF MAIN STREET