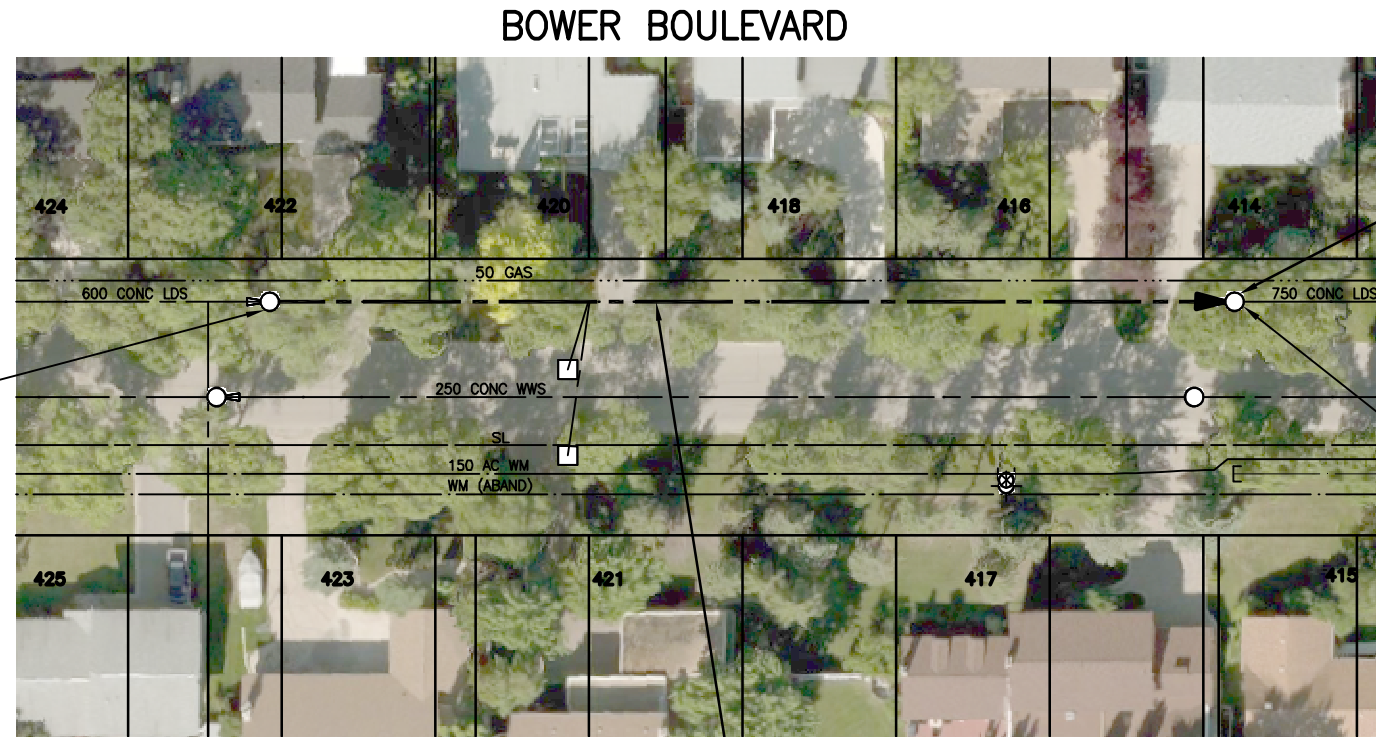




SEWER JUNCTION INFORMATION FROM SEWER VIDEO INSPECTION		
SEWER ID S-MA60004428		
DISTANCE FROM MH60003222		
DISTANCE	DIAMETER	CLOCK
2.1	150	2:00
7.1	150	10:00
12.7	150	9:00
24.7	150	2:00
28.7	150	2:00
29.8	150	2:00
34.8	150	10:00
48.0	150	10:00
54.5	150	2:00
66.3	150	10:00
79.5	150	2:00
94.5	150	10:00

S-MH60003222
RIM 234.446
INV N 231.366
INV S 231.366



INSTALL NEW MANHOLE FRAME

S-MH60003227
RIM 234.717
INV N 231.057
INV S 231.057

95.8 OF 750 CONC LDS TO BE LINED
S-MA60004428
(FULLY DETERIORATED)

WARNING

IF POWER EQUIPMENT OR EXPLOSIVES ARE TO BE USED FOR EXCAVATION ON THIS PROJECT THE CONTRACTOR MUST:

- 1) NOTIFY THE GAS COMPANY OF THE PROPOSED LOCATION OF EXCAVATION.
- 2) TAKE PRECAUTION TO AVOID DAMAGE TO GAS COMPANY INSTALLATIONS.

SEE PROVINCIAL REGULATION 140/92 FOR DETAILS



Certificate of Authorization
Stantec Consulting Ltd.

No. 1301

METRIC

WHOLE NUMBERS INDICATE MILLIMETRES
DECIMALIZED NUMBERS INDICATE METRES



TENDER NO. 213-2022

FOR INDEX SEE
13054

LOCATION APPROVED UNDERGROUND STRUCTURES

SUPV. U/G STRUCTURES COMMITTEE DATE

NOTE:
LOCATION OF UNDERGROUND STRUCTURES AS SHOWN ARE BASED ON THE BEST INFORMATION AVAILABLE BUT NO GUARANTEE IS GIVEN THAT ALL EXISTING UTILITIES ARE SHOWN OR THAT THE GIVEN LOCATIONS ARE EXACT. CONFIRMATION OF EXISTENCE AND EXACT LOCATION OF ALL SERVICES MUST BE OBTAINED FROM THE INDIVIDUAL UTILITIES BEFORE PROCEEDING WITH CONSTRUCTION.

NO.	REVISIONS	DATE	BY
2	ISSUED FOR TENDER	22.05.06	RS
1	ISSUED FOR REVIEW	22.04.29	RS



DESIGNED BY	RS	CHECKED BY	RS
DRAWN BY	OS	APPROVED BY	RS
HOR. SCALE:	1:750	RELEASED FOR CONSTRUCTION:	SC
VERTICAL:		DATE	22.05.04
DATE	22.03.15		

ENGINEER'S SEAL

CONSULTANT DRAWING NO.
C-101



THE CITY OF WINNIPEG
WATER AND WASTE DEPARTMENT

2022 SEWER RENEWALS BY CIPP LINING (LARGE DIAMETER)

CONTRACT 4

BOWER BOULEVARD
1st MH N OF MOUNTBATTEN AV
TO 2nd MH N OF MOUNTBATTEN AV

SHEET	OF
03	10
CAD FILE DRAWING NUMBER	
20593c-101.dwg	
CITY DRAWING NUMBER	
13055	