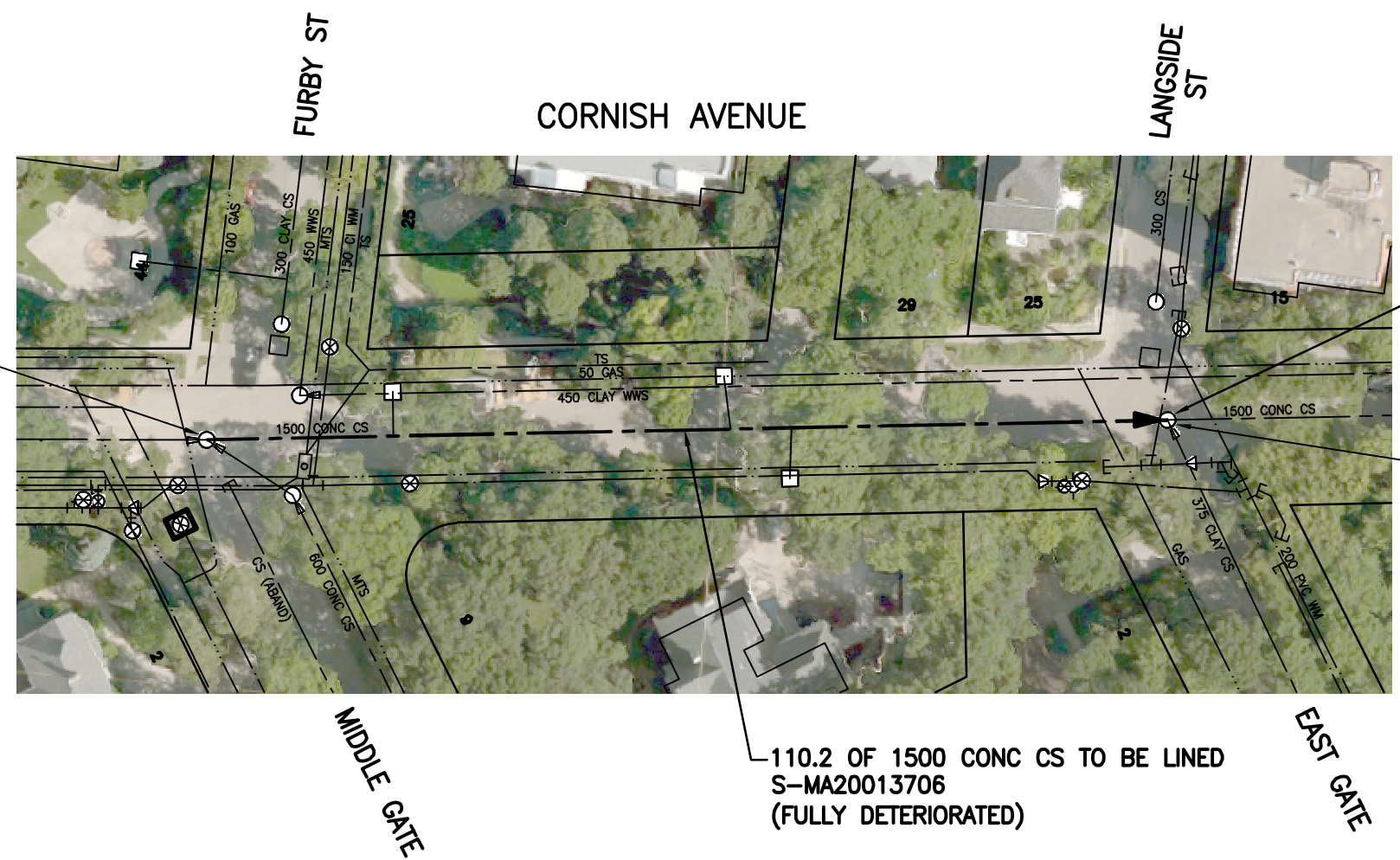




SEWER JUNCTION INFORMATION FROM SEWER VIDEO INSPECTION		
SEWER ID S-MA20013706		
DISTANCE FROM MH20012418		
DISTANCE	DIAMETER	CLOCK
0.6	300	4:00
10.1	150	2:00
12.8	150	2:00
33.1	150	10:00
58.0	200	11:00
59.5	150	1:00
59.5	150	11:00
64.2	200	1:00
77.8	150	1:00
82.7	150	11:00
94.5	150	1:00
97.8	150	11:00

S-MH20012418  
 RIM 232.268  
 INV W 224.118  
 INV E 224.118  
 INV SE 224.410



GROUT UNDER  
 MANHOLE FRAME

S-MH20012417  
 RIM 231.523  
 INV W 223.973  
 INV E 223.923  
 INV S 224.140

110.2 OF 1500 CONC CS TO BE LINED  
 S-MA20013706  
 (FULLY DETERIORATED)

# WARNING

IF POWER EQUIPMENT OR EXPLOSIVES ARE TO BE USED FOR EXCAVATION ON THIS PROJECT THE CONTRACTOR MUST:

- 1) NOTIFY THE GAS COMPANY OF THE PROPOSED LOCATION OF EXCAVATION.
- 2) TAKE PRECAUTION TO AVOID DAMAGE TO GAS COMPANY INSTALLATIONS.

SEE PROVINCIAL REGULATION 140/92 FOR DETAILS

**ENGINEERS  
 GEOSCIENTISTS  
 MANITOBA**  
 Certificate of Authorization  
 Stantec Consulting Ltd.  
 No. 1301

**METRIC**  
 WHOLE NUMBERS INDICATE MILLIMETRES  
 DECIMALIZED NUMBERS INDICATE METRES

TENDER NO. 212-2022

FOR INDEX SEE  
 13042

V:\112\active\11220592\0300\_drawing\0302\_sheet\_files\02\_civil\20592c-101.dwg

<b>LOCATION APPROVED UNDERGROUND STRUCTURES</b>  SUPV. U/G STRUCTURES COMMITTEE _____ DATE _____  <b>NOTE:</b> LOCATION OF UNDERGROUND STRUCTURES AS SHOWN ARE BASED ON THE BEST INFORMATION AVAILABLE BUT NO GUARANTEE IS GIVEN THAT ALL EXISTING UTILITIES ARE SHOWN OR THAT THE GIVEN LOCATIONS ARE EXACT. CONFIRMATION OF EXISTENCE AND EXACT LOCATION OF ALL SERVICES MUST BE OBTAINED FROM THE INDIVIDUAL UTILITIES BEFORE PROCEEDING WITH CONSTRUCTION.	B.M. ELEV.	 311 Portage Avenue, Winnipeg, Manitoba Tel 204-489-5900 Fax 204-453-9012	ENGINEER'S SEAL	 <b>THE CITY OF WINNIPEG</b> <b>WATER AND WASTE DEPARTMENT</b>		
			DESIGNED BY RS		CHECKED BY RS	
			DRAWN BY OS		APPROVED BY RS	
	2 ISSUED FOR TENDER 22.05.06 RS 1 ISSUED FOR REVIEW 22.04.29 RS		HOR. SCALE: 1:750		RELEASED FOR CONSTRUCTION: SC	2022 SEWER RENEWALS BY CIPP LINING (LARGE DIAMETER) CONTRACT 3 <b>CORNISH AVENUE</b> MH AT MIDDLE GATE TO MH AT EAST GATE
NO. REVISIONS	DATE	BY	DATE 22.03.15	DATE 22.05.04	CONSULTANT DRAWING NO. <b>C-105</b>	SHEET OF <b>07 12</b> CAD FILE DRAWING NUMBER <b>20592c-101.dwg</b> CITY DRAWING NUMBER <b>13047</b>