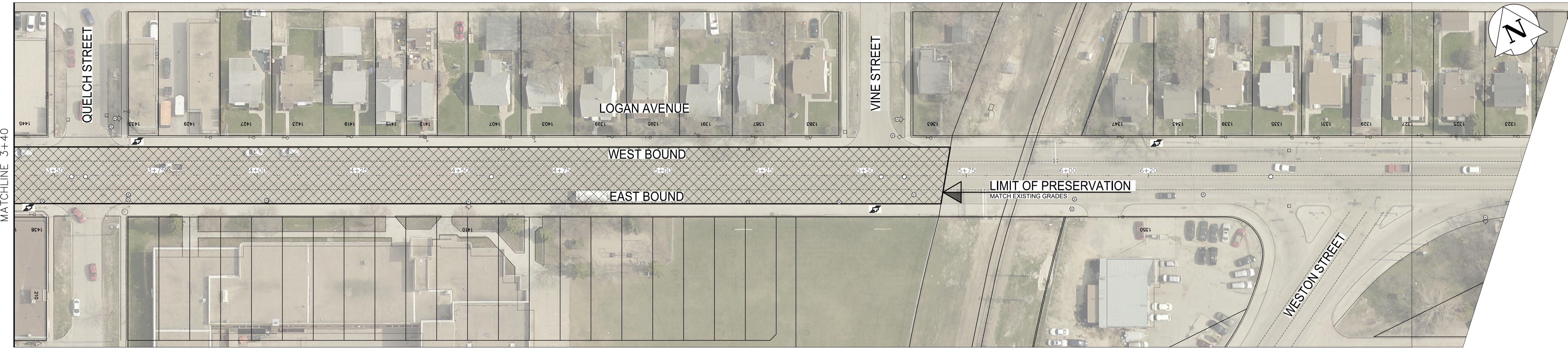
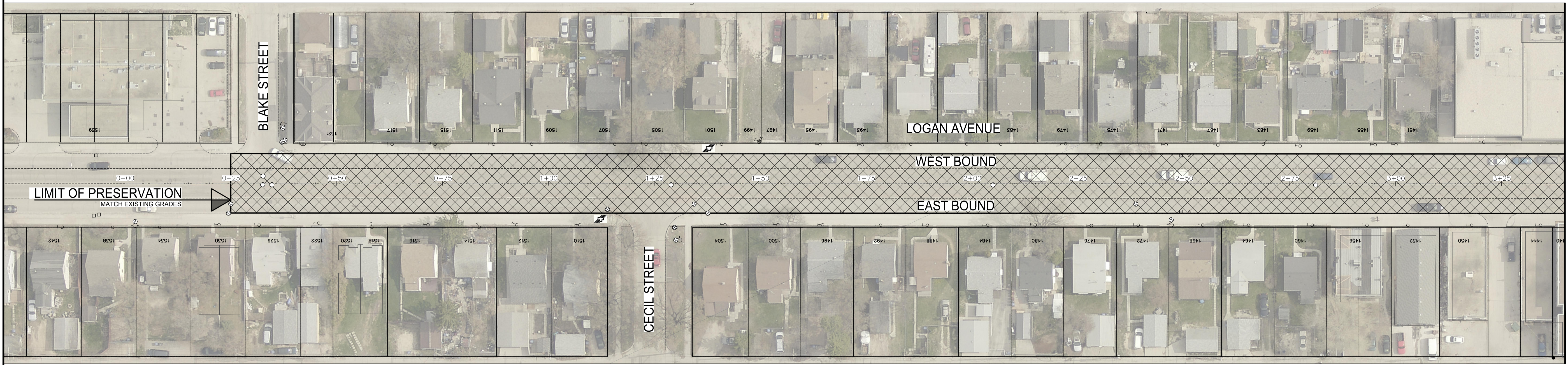


Apr 22, 2022 - 8:12am P:\2022\221-02142-00 - Prof Services\14.11 Highways\_Bridges\14.11.06 Drawings\03 Working Dwg\EB\_WB\_ Logan Ave.dwg - tab:199-2022\_EB\_WB Logan Ave\_221-02142-00-09-RB



- NOTES:**
1. ALL WORK AND MATERIALS TO BE IN ACCORDANCE WITH THE LATEST REVISION OF THE CITY OF WINNIPEG STANDARD CONSTRUCTION SPECIFICATIONS.
  2. CONTRACTOR TO CONFIRM THE LOCATION OF ALL UTILITIES/SERVICES IN THE FIELD PRIOR TO CONSTRUCTION.
  3. RENEW CURB, SPLASH STRIP, BULLNOSE, AND SIDEWALK AS IDENTIFIED BY CONTRACT ADMINISTRATOR.
  4. ALL PRIVATE WALKWAYS TO BE ADJUSTED TO NEW SIDEWALK OR TOP OF CURB ELEVATION, AS REQUIRED.
  5. ADJUST MH FRAMES, CB RIMS, CURB INLETS, AND VALVES TO NEW GRADES, AS REQUIRED.
  6. MODIFIED BARRIER CURBS TO BE CONSTRUCTED AT ALL INTERSECTION RADI AND BACK LANE RADI.
  7. LAMP STANDARDS, HYDRO POLES, AND ANCHORS THAT REQUIRE TEMPORARY SUPPORT, REMOVAL OR REPLACEMENT, TO BE DONE SO AT THE EXPENSE OF THE CONTRACTOR AS NECESSARY.
  8. CONTRACTORS TO TAKE PRECAUTIONARY STEPS TO PROTECT EXISTING TREES WITHIN THE LIMITS OF CONSTRUCTION FROM DAMAGE FROM CONSTRUCTION ACTIVITIES AS OUTLINED IN THE SPECIFICATIONS.
  9. ALL BOULEVARDS TO BE SODDED UNLESS OTHERWISE NOTED.
  10. FULL AND PARTIAL DEPTH JOINT REPAIRS, AND SLAB RENEWALS TO BE FINALIZED IN THE FIELD PRIOR TO CONSTRUCTION. THE REPAIRS IDENTIFIED ON THIS DRAWING ARE FOR TENDER PURPOSE ONLY.
  11. ALL JOINTS AND CRACKS TO BE SEALED AFTER DIAMOND GRINDING IS COMPLETED.
  12. DIAMOND GRINDING LIMITS TO BE FINALIZED IN THE FIELD PRIOR TO CONSTRUCTION, AS DIRECTED BY CONTRACT ADMINISTRATOR.

EXISTING	LEGEND-PLAN	PROPOSED	EXISTING	LEGEND-PLAN	PROPOSED
	TRANSIT STOP			EDGE OF SIDEWALK	
	HYDRO POLE			FENCE	
	MANHOLE			PROPERTY LINE	
	CATCH BASIN			EDGE OF CONCRETE & ASPHALT	
	CURB INLET			SIDEWALK RENEWAL	
	HYDRANT			DIAMOND GRINDING LIMITS	
	VALVE			FULL DEPTH REPAIRS	
	CURB STOP			ASPHALT RENEWAL	
	ANCHOR			CONCRETE PRESERVATION	
	CIVIC ADDRESS			BOULEVARD GRADING	

**METRIC**  
WHOLE NUMBERS INDICATE MILLIMETRES  
DECIMALIZED NUMBERS INDICATE METRES

**ENGINEERS  
GEOSCIENTISTS  
MANITOBA**  
Certificate of Authorization  
WSP Canada Inc.  
No. 5750

**PRELIMINARY  
NOT FOR CONSTRUCTION**

G.M.	N/A		WSP Canada Inc. 1600 Buffalo Place Winnipeg, MB R3T 6B8 t. 204.477.6658 f. 204.474.2864 www.wsp.com		
ELEV.					
H		DESIGNED BY	JM	CHECKED BY	SS
G		DRAWN BY	SB	APPROVED BY	VM
F		HOR. SCALE	1:500	RELEASED FOR	CONSTRUCTION
E		VERTICAL	N/A	DATE	
D		NO.	REVISIONS	DATE	BY
C		DATE	03/24/2022	DATE	
B	ISSUED FOR TENDER	04/22/22	JM		
A	ISSUED FOR DETAIL DESIGN REVIEW	04/19/22	JM		

ENGINEER'S SEAL  
PROVINCE OF MANITOBA  
**J.S.F. MAGNE**  
REGISTERED PROFESSIONAL ENGINEER  
MEMBER 31236  
CONSULTANT ACAD. DWG. NO.  
221-02142-00-09

**THE CITY OF WINNIPEG**  
PUBLIC WORKS DEPARTMENT  
ENGINEERING SERVICES DIVISION

**2022 STREETS MAINTENANCE  
PRESERVATION PROGRAM**  
LOGAN AVENUE EAST AND WEST BOUND  
DIAMOND GRINDING  
BLAKE STREET TO WEST PROPERTY LIMIT OF RAILWAY

CITY DRAWING NUMBER  
N/A  
SHEET 09 OF 13  
TENDER NO.  
199-2022