

APPENDIX 'E'

SITE PHOTOS

2022 Trenchless Rehabilitation of Non-Circular Combined Sewers - Contract 2,
Tender 190-2022 - Appendix E – Site Photos



Figure 1: S-MA50013611 – Sharp Bend



Figure 2: S-MA50013611 – Surface Spalling

2022 Trenchless Rehabilitation of Non-Circular Combined Sewers - Contract 2,
Tender 190-2022 - Appendix E – Site Photos



Figure 3: S-MA50013611 - Existing Liner at Downstream MH

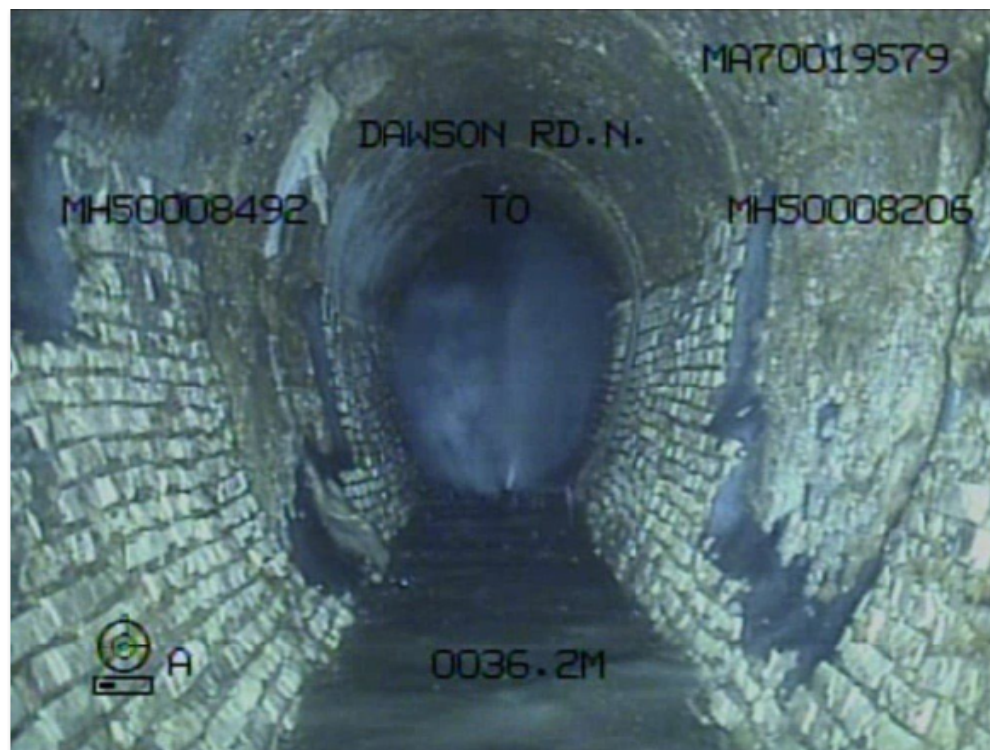


Figure 4: S-MA70019579 – Missing Bricks

2022 Trenchless Rehabilitation of Non-Circular Combined Sewers - Contract 2,
Tender 190-2022 - Appendix E – Site Photos



Figure 5: S-MA70019579 – Missing Bricks, Large Service

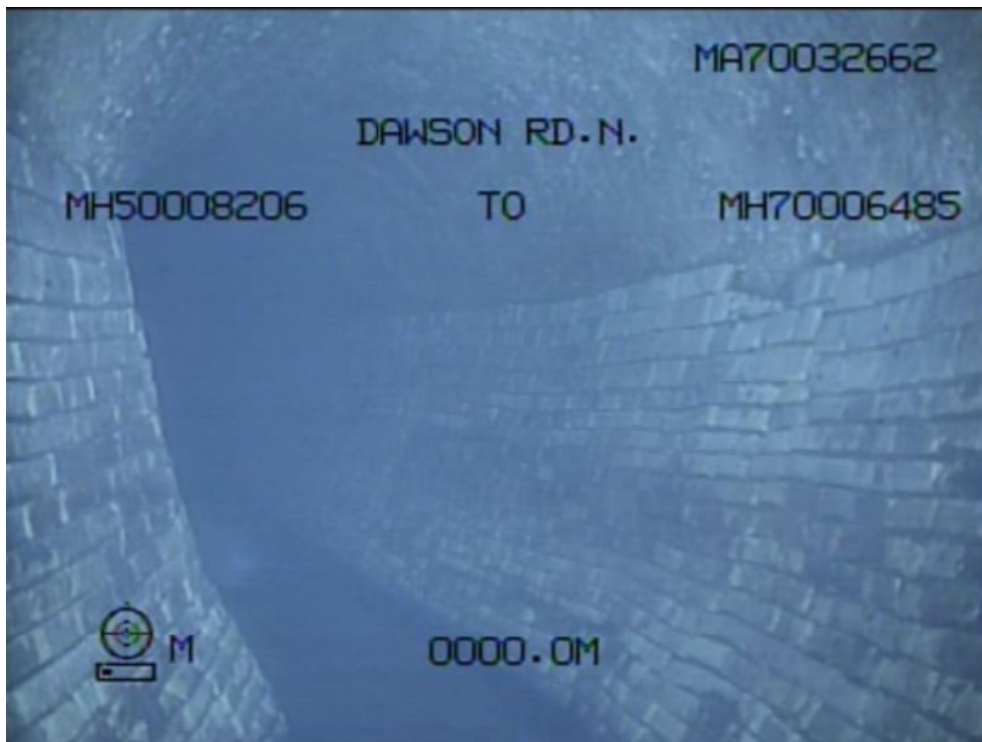


Figure 6: S-MA70032662 – Bend

2022 Trenchless Rehabilitation of Non-Circular Combined Sewers - Contract 2,
Tender 190-2022 - Appendix E – Site Photos



Figure 7: S-MA70032662 – Bend



Figure 8: S-MA70032662 – Large Branch

2022 Trenchless Rehabilitation of Non-Circular Combined Sewers - Contract 2,
Tender 190-2022 - Appendix E – Site Photos



Figure 9: S-MA50013486 – Missing Bricks



Figure 10: S-MA50013486 – Bulging Walls

2022 Trenchless Rehabilitation of Non-Circular Combined Sewers - Contract 2,
Tender 190-2022 - Appendix E – Site Photos



Figure 11: S-MA40011001 – Encrustation and Surface Spalling

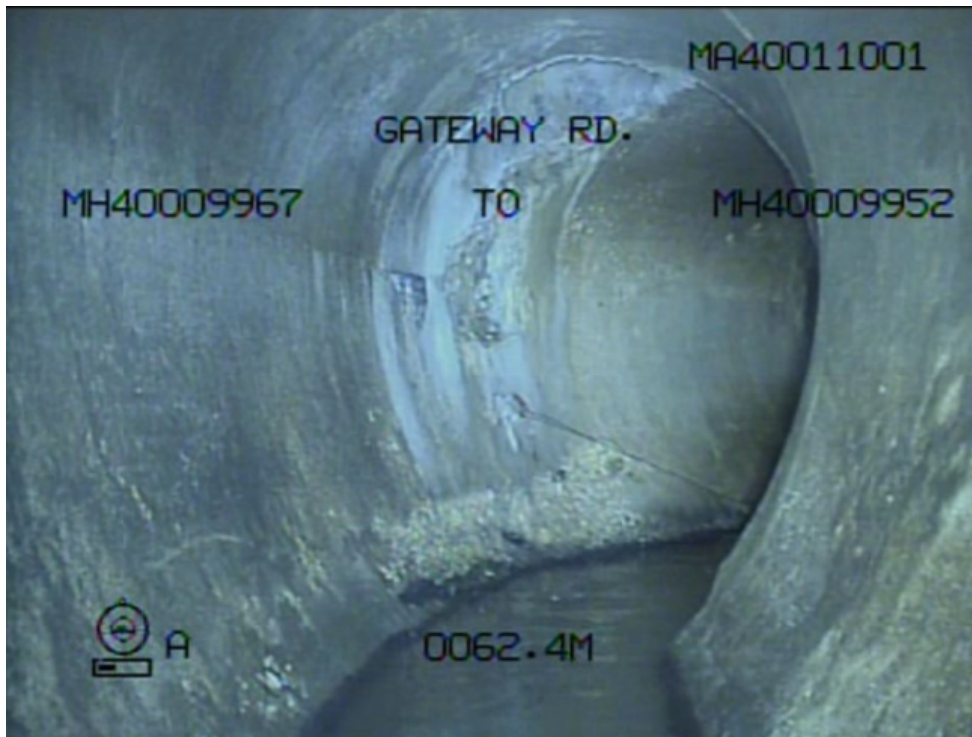


Figure 12: S-MA40011001 – Bend at DS MH