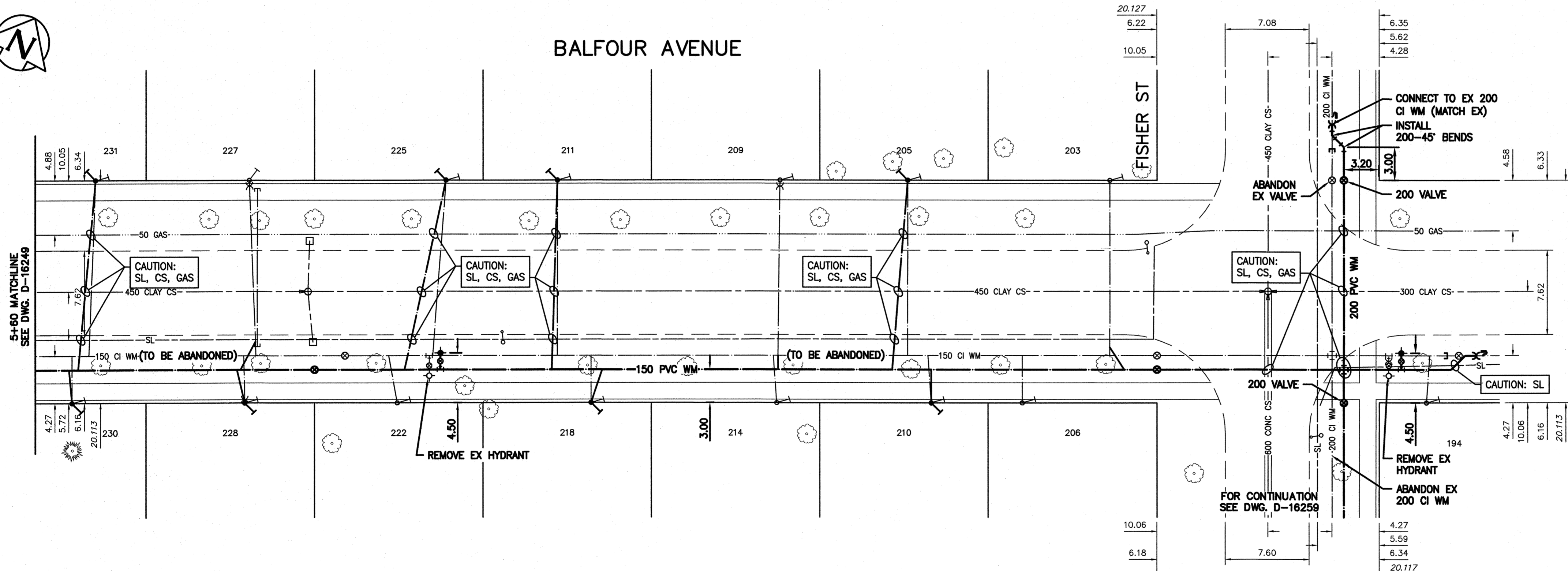
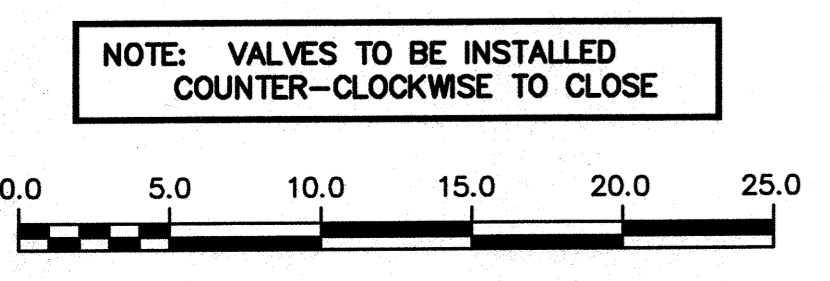


NOTE: CHAINAGES SHOWN ARE ALONG CENTRE LINE OF ROW



WATER SERVICE INFORMATION					
ADDRESS	PIPE SIZE & MATERIAL (STREET)	PIPE SIZE & MATERIAL (PROP.)	SHORT & LONG MEASUREMENT	CORP. LOCATION	REMARKS
* 231 BALFOUR AVE	LEAD	LEAD	1.00 EEL CELLAR	2.0 W S/C	RENEW SERVICE
RESIDENTIAL	12	12	185.00 EEL CASEY		
* 230 BALFOUR AVE	LEAD	LEAD	11.00 WEL HSE	OPP S/C	RENEW SERVICE
RESIDENTIAL	12	12	178.00 EEL CASEY		
* 228 BALFOUR AVE	-	LEAD	6.50 E/WBL	0.9 W CS	RENEW SERVICE
RESIDENTIAL	-	12	10.00 E/WBL		
227 BALFOUR AVE	CU	LEAD	5.90 WELL	0.6m E CS	RECONNECT SERVICE
RESIDENTIAL	20	12	5.30 WEBL		
* 225 BALFOUR AVE	LEAD	LEAD	3.00 WWL DOOR	215.0 WWL FISHER	RENEW SERVICE
RESIDENTIAL	12	12	211.00 WWL FISHER		
222 BALFOUR AVE	CU	CU	4.57 E/WHL	0.8 W OF S/C	RECONNECT SERVICE
RESIDENTIAL	20	20	-		
* 218 BALFOUR AVE	CU	CU	7.00 WEL HSE	OPP S/C	RENEW SERVICE
RESIDENTIAL	20	20	168.00 W FISHER		
214 BALFOUR AVE	CU	CU	5.00 WEL HSE	1.0 W S/C	RECONNECT SERVICE
RESIDENTIAL	20	20	73.00 WWL FISHER		
* 211 BALFOUR AVE	LEAD	LEAD	2.13 EWL HOUSE	SAME AS S/C	RENEW SERVICE
RESIDENTIAL	12	12	178.00 WWL FISHER		
* 210 BALFOUR AVE	LEAD	LEAD	8.00 WEL HSE	1.0 W S/C	RECONNECT SERVICE
RESIDENTIAL	20	20	67.00 WWL FISHER		
209 BALFOUR AVE	-	CU	3.60 WELL	OPP S/C	RECONNECT SERVICE
RESIDENTIAL	-	20	1.80 WEBL		
206 BALFOUR AVE	CU	LEAD	6.00 EWL FOUNDATION	OPP S/C	RECONNECT SERVICE
RESIDENTIAL	12	12	40.00 WWL FISHER		
* 205 BALFOUR AVE	LEAD	LEAD	2.00 EEL HSE	SAME AS S/C	RENEW SERVICE
RESIDENTIAL	12	12	74.00 WWL FISHER		
203 BALFOUR AVE	CU	LEAD	2.74 W OF E/HL	OPP. S/C.	RECONNECT SERVICE
RESIDENTIAL	20	12	14.00 WWL FISHER		
194 BALFOUR AVE	CU	CU	OPP WL HSE	1.0 E S/C	RECONNECT SERVICE
RESIDENTIAL	20	20	14.00 EEL FISHER		

* SERVICES TO BE RENEWED TO r



NOTE: VALVES TO BE INSTALLED COUNTER-CLOCKWISE TO CLOSE

FOR INDEX SEE D-16245

METRIC
WHOLE NUMBERS INDICATE MILLIMETRES
DECIMALIZED NUMBERS INDICATE METRES

ENGINEERS GEOSCIENTISTS MANITOBA
Certificate of Authorization
Stantec Consulting Ltd.
No. 1301

LOCATION APPROVED UNDERGROUND STRUCTURES

SUPV. U/G STRUCTURES COMMITTEE DATE

NOTE:
LOCATION OF UNDERGROUND STRUCTURES AS SHOWN ARE BASED ON THE BEST INFORMATION AVAILABLE BUT NO GUARANTEE IS GIVEN THAT ALL EXISTING UTILITIES ARE SHOWN OR THAT THE GIVEN LOCATIONS ARE EXACT. CONFIRMATION OF EXISTENCE AND EXACT LOCATION OF ALL UTILITIES MUST BE OBTAINED FROM THE INDIVIDUAL UTILITIES BEFORE PROCEEDING WITH CONSTRUCTION.

B.M. 53-31 ELEV. 232.097	N.W. Cor. Baltimore Rd. & Hay St. Brass plug in 14.8m Conc. pile, 2.4m E. of W.L. Hay St., 2.4m S. of N.L. Baltimore Rd.		
01	ISSUED FOR TENDER	2022.04.22	RS
NO.	REVISIONS	DATE	BY

Stantec

DESIGNED BY: RS
CHECKED BY: RS
DRAWN BY: OS
APPROVED BY: RS

SCALE:
HORIZONTAL: 1:250
VERTICAL: 1:50

RELEASED FOR CONTRIBUTION
DATE: 2022.03.01

PLANT DATE: 2022 04 21

ENGINEER'S SEAL

PROVINCE OF MANITOBA
2022-04-22
SHERLOCK
Member
24045
REGISTERED PROFESSIONAL ENGINEER

CONSULTANT DRAWING NUMBER
C-205

THE CITY OF WINNIPEG
WATER AND WASTE DEPARTMENT
ENGINEERING DIVISION

2022 WATERMAIN RENEWALS
CONTRACT 5
BALFOUR AVENUE
50.9 E OF CASEY STREET
8.8 E OF FISHER STREET

SHEET 07 OF 16
CITY DRAWING NUMBER
D-16250