



Photo 1 - Air Release Chamber (ARC) #6 (ID Unknown) at Water Treatment Plant Facility looking Southwest.



Photo 2 - ARC #6 (ID Unknown) Blind Flange and Piping, From Bottom of Ladder Access looking North.



Photo 3 - ARC #6 (ID Unknown) Piping looking Northeast.



Photo 4 - ARC #6 (ID Unknown) Piping at Connection to Vent Piping at South Wall.



Photo 5 - ARC #6 (ID Unknown) General Access Hatch (Left) and Roof Slab (Right) from Top of Pipe at Ladder Access.



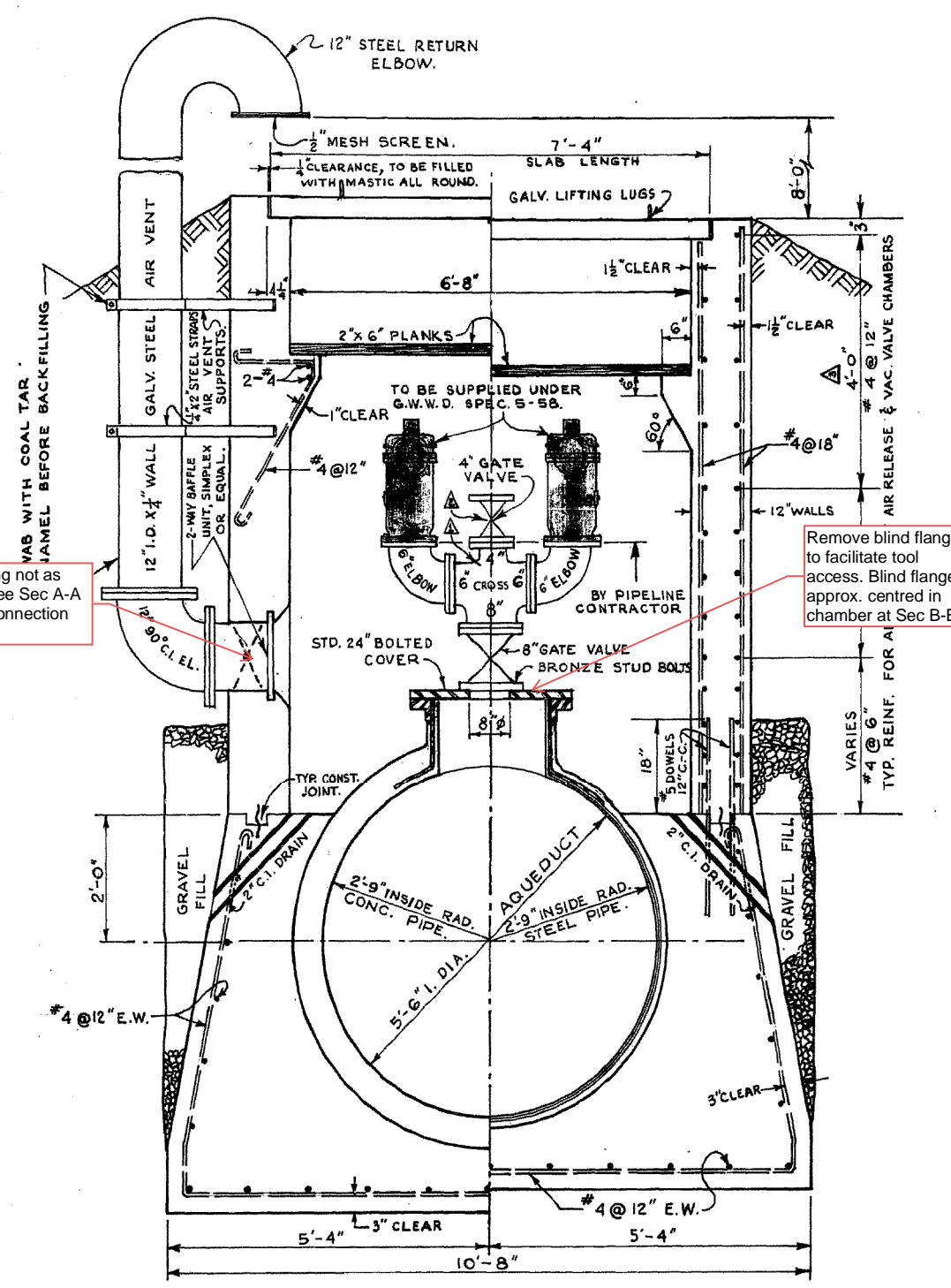
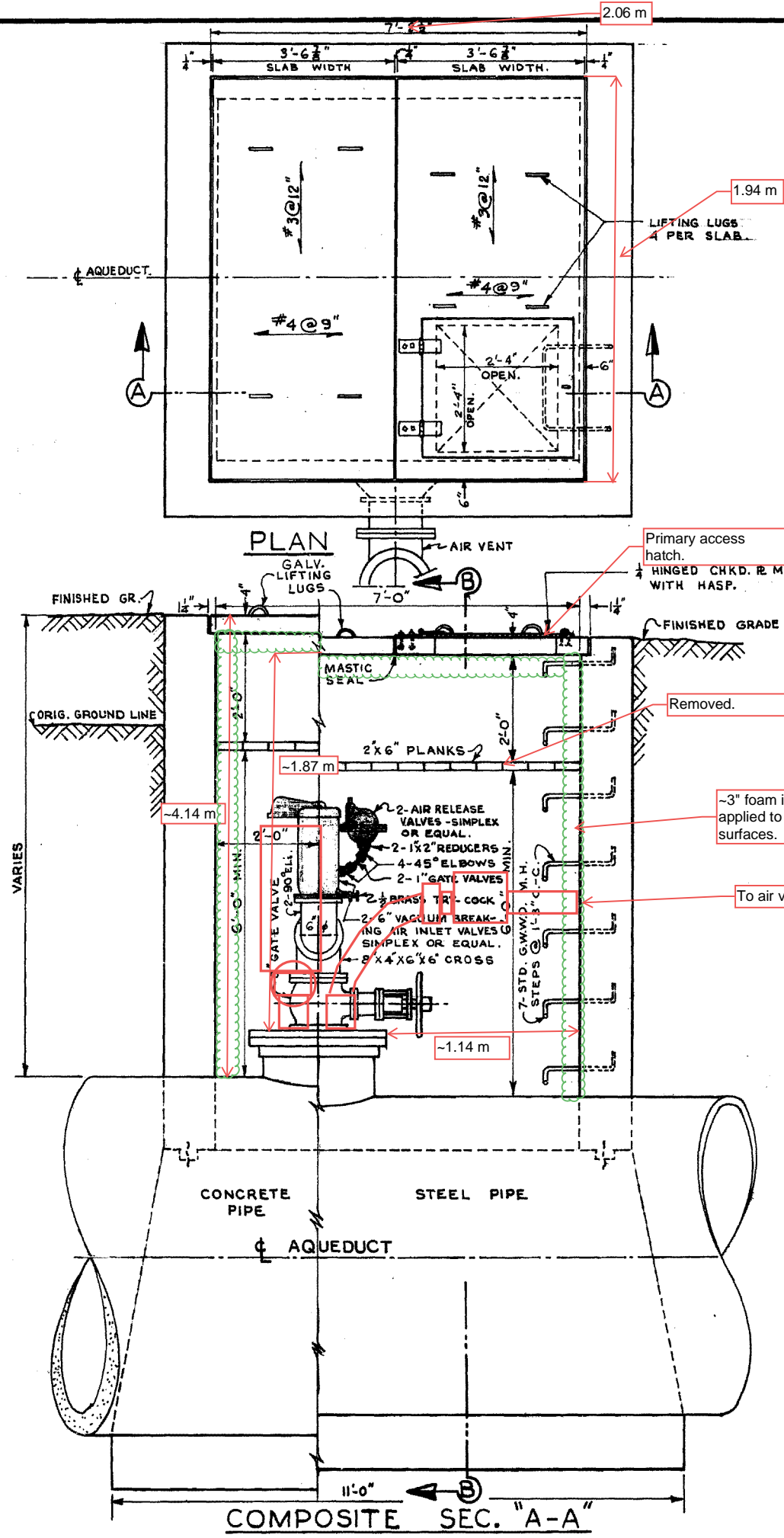
Photo 6 - General Chamber Roof Layout of ARC #2007A (W-VP0000657) and ARC #2007B (W-VP0000660) at the Floodway from Grade.



Photo 7 - General Piping Layout of ARC #2007A (W-VP0000657) and ARC #2007B (W-VP0000660) at the Floodway from Grade



Photo 8 - Typical Pressure Manhole and Pressure Hatch from Grade.



1.94 m

2.06 m

LIFTING LUGS 4 PER SLAB

Primary access hatch. HINGED CHKD. R. M.H. COVER WITH HASP.

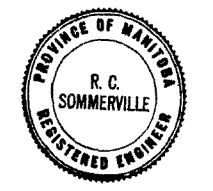
Vent piping not as shown. See Sec A-A for vent connection details.

Removed.

~3" foam insulation applied to all interior surfaces.

To air vent piping

Remove blind flange to facilitate tool access. Blind flange approx. centred in chamber at Sec B-B.



REVISIONS			
NO.	DESCRIPTION	DATE	BY
1	8x6x6 TEE CHANGED TO 8x4x6x6 CROSS	17 OCT 58	HB
2	4" GATE VALVE.	5 DEC 58	SK
3	DIMENSION CHANGED FROM 8'-9" TO 4'-9"	8 DEC 58	HB

**GREATER WINNIPEG WATER DISTRICT
SECOND BRANCH AQUEDUCT**

TITLE:
**AIR RELEASE VALVE &
VACUUM VALVE CHAMBER**

APPROVED BY: *[Signature]* CHIEF ENGINEER
DESIGNED BY: *[Signature]* E.C.S.
CHECKED BY: *[Signature]* E.C.S.
DATE: 23 SEP 58
SCALE: 3/4" = 1'-0"

DRAWING NO. **D-803**