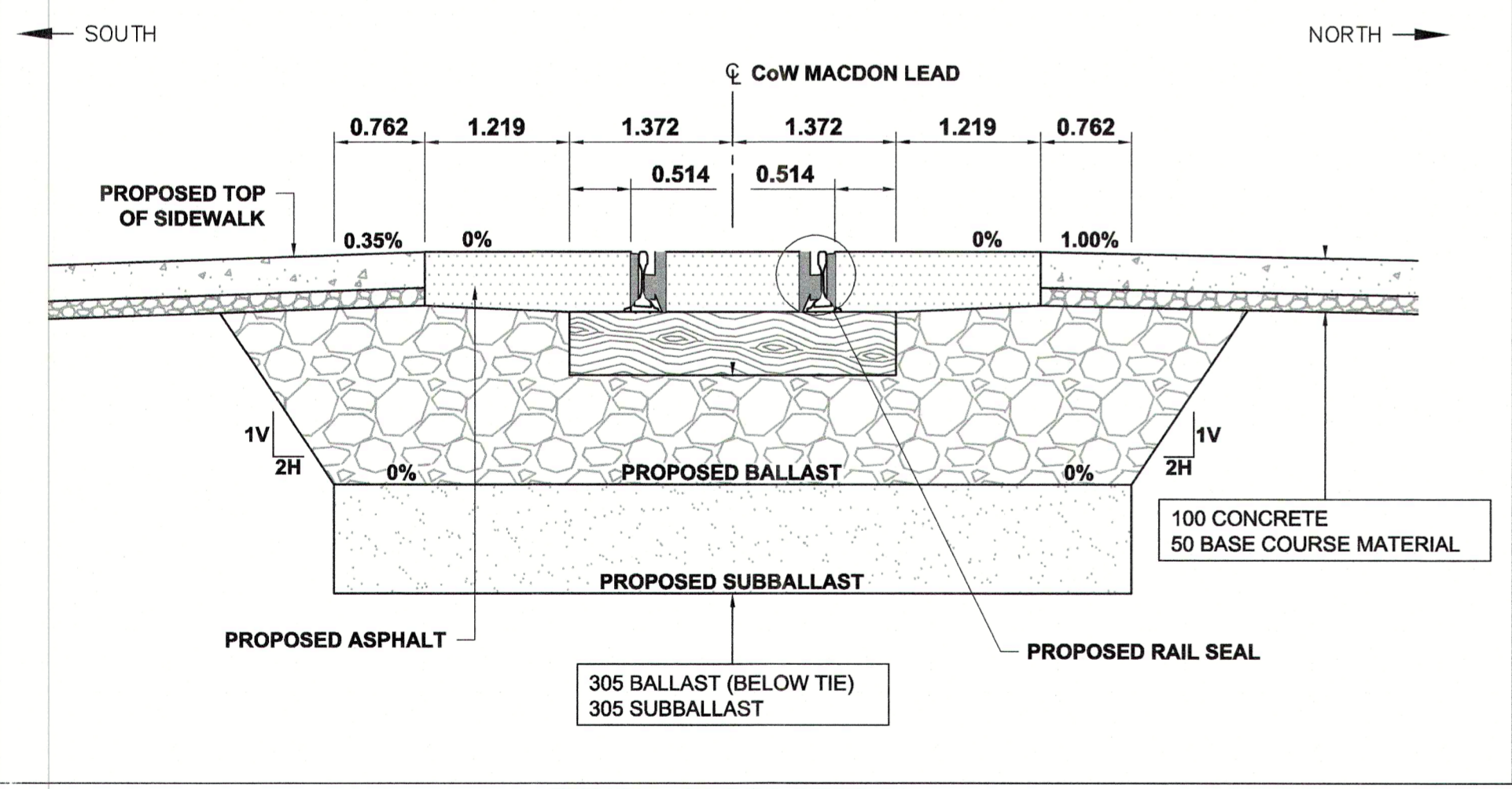
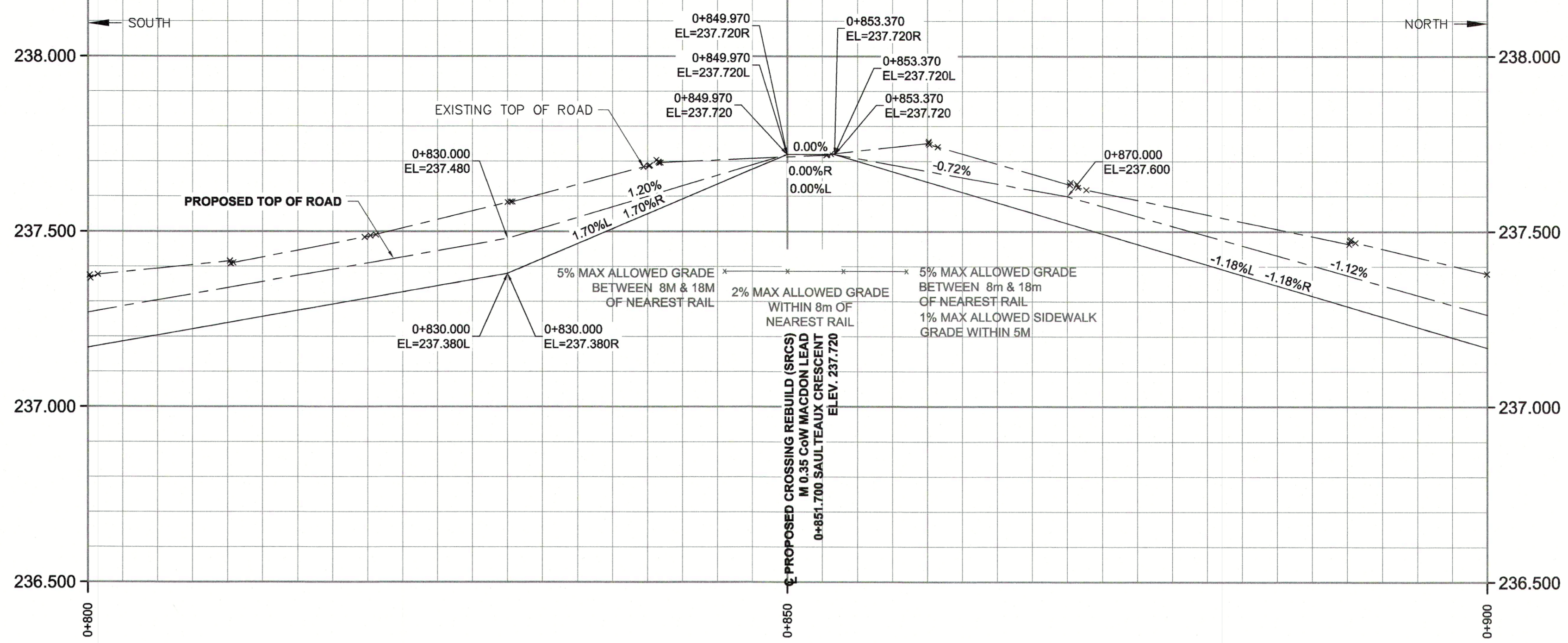
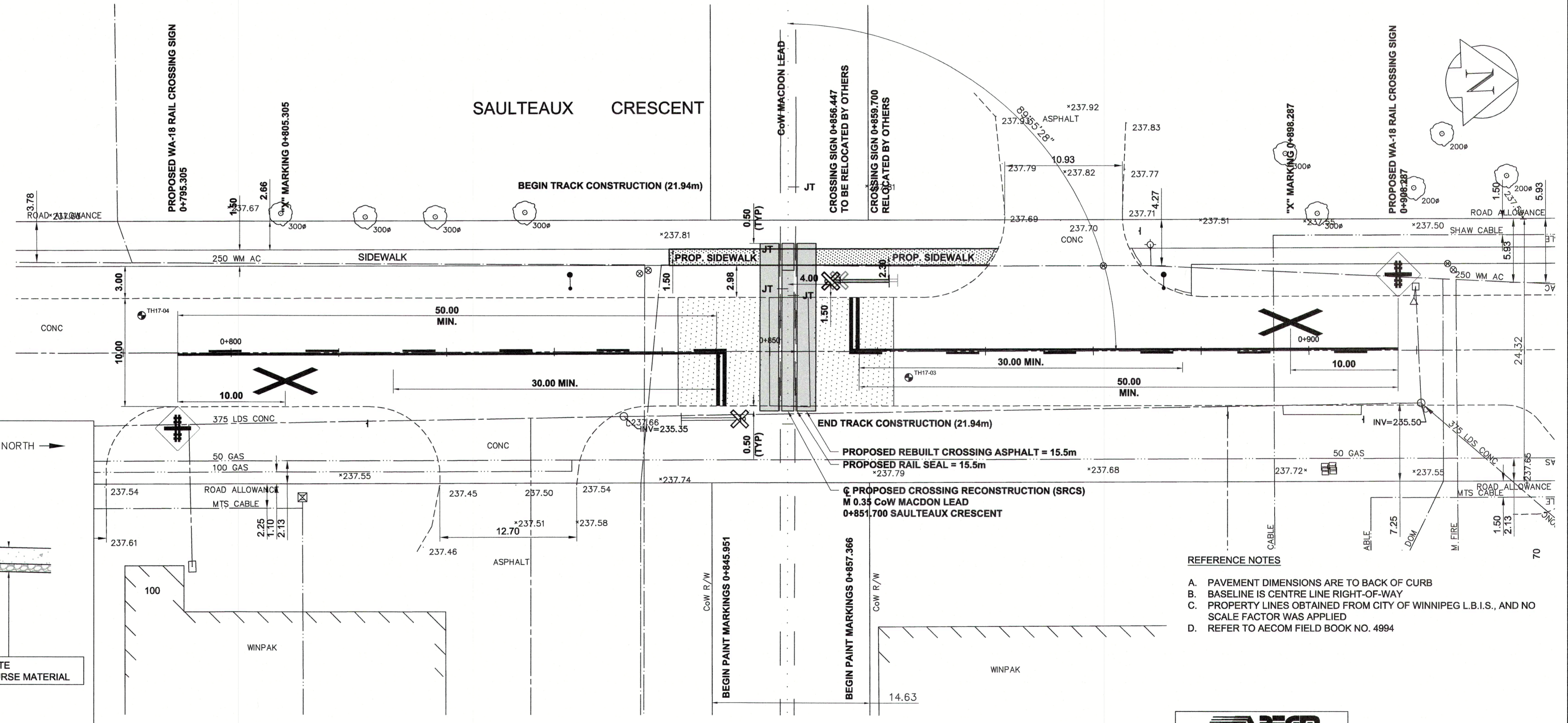


TYPICAL CROSS SECTION
SAULTEAUX STREET RAIL CROSSING RECONSTRUCTION



TYPICAL CROSS SECTION
PROPOSED NEW SIDEWALK RAIL CROSSING



- REFERENCE NOTES
- A. PAVEMENT DIMENSIONS ARE TO BACK OF CURB
 - B. BASELINE IS CENTRE LINE RIGHT-OF-WAY
 - C. PROPERTY LINES OBTAINED FROM CITY OF WINNIPEG L.B.I.S., AND NO SCALE FACTOR WAS APPLIED
 - D. REFER TO AECOM FIELD BOOK NO. 4994

AECOM
Certificate of Authorization
AECOM Canada Ltd.
No. 4671 Date: MW 15/22

METRIC
WHOLE NUMBERS INDICATE MILLIMETRES
DECIMALIZED NUMBERS INDICATE METRES

EXISTING	LEGEND - PLAN	PROPOSED	EXISTING	LEGEND - PLAN	PROPOSED	EXISTING	LEGEND - PROFILE	PROPOSED
150 mm W.M.	WATERMAIN	150 mm W.M.	---	HYDRO	---	---	☒	☒
150 mm W.M.	HYDRANT	150 mm W.M.	---	M.T.S.	---	---	☒	☒
150 mm W.M.	VALVE	150 mm W.M.	---	CONCRETE	---	---	☒	☒
300mm L.D.S.	LAND DRAINAGE SEWER	300mm L.D.S.	---	ASPHALT	---	---	☒	☒
250mm W.W.S.	WASTEWATER SEWER	250mm W.W.S.	---	PROPERTY LINE	---	---	☒	☒
○	MANHOLE	○	---	SURVEY BAR	---	---	☒	☒
□	CATCH BASIN	□	---	ELEVATION	---	---	☒	☒
▽	CATCH PIT	▽	---	TREE	---	---	☒	☒
+	JUNCTIONS	+	---	SIDEWALK RAMP	---	---	☒	☒
▭	CULVERT	▭	---	CONCRETE SIDEWALK	---	---	☒	☒
---	GAS	---	---	FENCE	---	---	☒	☒

LOCATION APPROVED
UNDERGROUND STRUCTURES

SUPV. U/G STRUCTURES COMMITTEE DATE

NOTE:
LOCATION OF UNDERGROUND STRUCTURES AS SHOWN ARE BASED ON THE BEST INFORMATION AVAILABLE. BUT NO GUARANTEE IS GIVEN THAT ALL EXISTING UTILITIES ARE SHOWN OR THAT THE GIVEN LOCATIONS ARE EXACT. CONFIRMATION OF EXISTENCE AND EXACT LOCATION OF ALL SERVICES MUST BE OBTAINED FROM THE INDIVIDUAL UTILITIES BEFORE PROCEEDING WITH CONSTRUCTION.

NO.	REVISIONS	DATE	BY
0	ISSUED FOR TENDER	03/15/2022	BC
A	ISSUED FOR REVIEW	03/09/2022	BC

AECOM

DESIGNED BY: GME
DRAWN BY: GME
HOR. SCALE: 1:250
VERTICAL: 1:10

CHECKED BY: BC/R/C
APPROVED BY:
RELEASED FOR CONSTRUCTION BY:

ENGINEER'S SEAL
PROVINCE OF MANITOBA
R.T. CUNNINGHAM
Member
24711
REGISTERED PROFESSIONAL ENGINEER

THE CITY OF WINNIPEG
PUBLIC WORKS DEPARTMENT
ENGINEERING DIVISION

2022 INDUSTRIAL STREET
RENEWAL PROGRAM

SAULTEAUX CRESCENT EAST LEG - MORAY ST TO MORAY ST
PROP. CROSSING RECONSTRUCTION M 0.35 CoW MACDON LEAD
PLAN, PROFILE & TYPICAL SECTIONS

CITY DRAWING NUMBER
SHEET 20 OF 20