

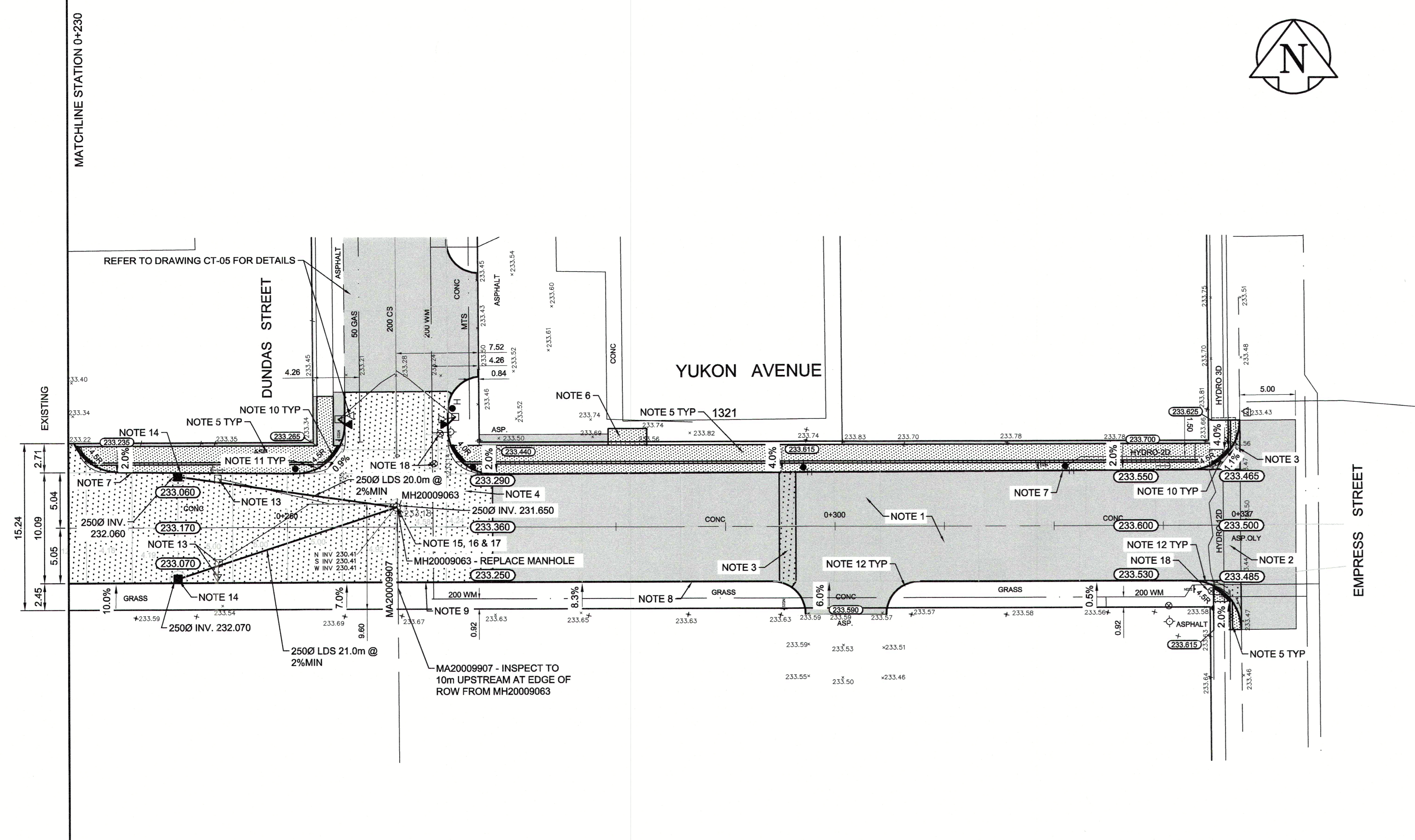
100mm CONCRETE SIDEWALK WITH PAVING BAND
NTS

REFERENCE NOTES:

- A. PAVEMENT DIMENSIONS ARE TO BACK OF CURB
- B. BASELINE IS CENTRE LINE ROADWAY
- C. PROPERTY LINES OBTAINED FROM CITY OF WINNIPEG L.B.I.S., AND NO SCALE FACTOR WAS APPLIED
- D. REFER TO AECOM FIELD BOOK NO. 5111

CONSTRUCTION NOTES:

1. CONSTRUCT NEW ASPHALT PAVEMENT OVERLAY TYPE 1A (100mm AVG. THICKNESS)
2. REMOVE EXISTING ASPHALT PAVEMENT AND CONSTRUCT NEW ASPHALT PAVEMENT OVERLAY TYPE 1A (100mm AVG. THICKNESS)
3. REMOVE EXISTING CONCRETE PAVEMENT AND CONSTRUCT NEW 200mm REINFORCED CONCRETE PAVEMENT c/w ASPHALT OVERLAY TYPE 1A
4. REMOVE EXISTING PAVEMENT AND CONSTRUCT NEW 200mm REINFORCED CONCRETE PAVEMENT
5. REMOVE EXISTING SIDEWALK AND CONSTRUCT NEW MONOLITHIC BARRIER CURB (100mm REVEAL HT.) AND 100mm CONCRETE SIDEWALK c/w BLOCKOUT AND PAVING STONES
6. RENEW EXISTING 100mm CONCRETE SIDEWALK
7. REMOVE EXISTING CONCRETE BARRIER CURB
8. RENEW EXISTING CONCRETE BARRIER CURB (150mm REVEAL HT., DOWELLED SD-205)
9. CONSTRUCT NEW CONCRETE BARRIER CURB (150mm REVEAL HT., SEPARATE SD-203A)
10. RENEW CONCRETE CURB RAMP (10-12mm REVEAL HT., MONOLITHIC SD-229A)
11. CONSTRUCT NEW MODIFIED BARRIER CURB (100mm HT., INTEGRAL)
12. CONSTRUCT NEW MODIFIED BARRIER CURB (100mm HT., MONOLITHIC)
13. REMOVE EXISTING CATCHBASIN/CATCHPIT AND ABANDON EXISTING LEAD
14. INSTALL NEW CURB AND GUTTER INLET c/w 1200mm CATCHBASIN (SD-024) AND CONNECT NEW 250mm LEAD TO EXISTING MANHOLE
15. ADJUST EXISTING MANHOLE / CATCH BASIN TO GRADE
16. INSTALL NEW CAST IRON RISER RING
17. REMOVE EXISTING FRAME AND COVER AND PLACE NEW FRAME AND COVER (AP-006 / AP-007)
18. ADJUST EXIST WATER VALVE TO GRADE



**ENGINEERS
GEOLOGISTS
MANITOBA**
Certificate of Authorization
AECOM Canada Ltd.
No. 4671 Date: Apr 15/22

METRIC
WHOLE NUMBERS INDICATE MILLIMETRES
DECIMALIZED NUMBERS INDICATE METRES

150 mm W.M.	WATERMAIN	150 mm W.M.	HYDRO	— x —	Q PROFILE
300mm L.D.S.	HYDRANT	300mm L.D.S.	M.T.S.	— o —	EAST GUTTER
250mm W.W.S.	VALVE	250mm W.W.S.	CONCRETE	— □ —	WEST GUTTER
	LAND DRAINAGE SEWER		ASPHALT	— ○ —	S PROPERTY LINE
	WASTEWATER SEWER		PROPERTY LINE	— ◇ —	N PROPERTY LINE
	MANHOLE		SURVEY BAR		
	CATCH BASIN		ELEVATION		
	CATCH PIT		(235.750)		
	JUNCTIONS		TREE		
	CULVERT		SIDEWALK RAMP		
	GAS		CONCRETE SIDEWALK		
			FENCE		
EXISTING	LEGEND - PLAN	PROPOSED	EXISTING	LEGEND - PLAN	PROPOSED
			EXISTING	LEGEND - PROFILE	PROPOSED

LOCATION APPROVED UNDERGROUND STRUCTURES

SUPV. U/G STRUCTURES COMMITTEE DATE

NOTE:
LOCATION OF UNDERGROUND STRUCTURES AS SHOWN ARE BASED ON THE BEST INFORMATION AVAILABLE. BUT NO GUARANTEE IS GIVEN THAT ALL EXISTING UTILITIES ARE SHOWN OR THAT THE GIVEN LOCATIONS ARE EXACT. CONFIRMATION OF EXISTENCE AND EXACT LOCATION OF ALL SERVICES MUST BE OBTAINED FROM THE INDIVIDUAL UTILITIES BEFORE PROCEEDING WITH CONSTRUCTION.

B.M. ELEV.	#23 - S. side of Ellice Ave. E. of Empress St., Tbt in Concrete foundation of No. 1320 Ellice Ave, 1m E. & 0.3m EL: 233.965
0	ISSUED FOR TENDER 03/15/22 BC
A	ISSUED FOR REVIEW 02/11/22 BC
NO.	REVISIONS DATE BY

AECOM

DESIGNED BY	BC	CHECKED BY	RC
DRAWN BY	JT	APPROVED BY	RC
HOR. SCALE:	1:250	RELEASED FOR CONSTRUCTION BY:	
VERTICAL:	1:10	DATE	02/11/22

ENGINEER'S SEAL
PROVINCE OF MANITOBA
R.T. CUNNINGHAM
Member
24711
REGISTERED PROFESSIONAL ENGINEER

THE CITY OF WINNIPEG
PUBLIC WORKS DEPARTMENT
ENGINEERING DIVISION

2022 INDUSTRIAL STREET RENEWAL PROGRAM

YUKON AVENUE - STATION 0+230 TO EMPRESS STREET
PAVEMENT REHABILITATION
PLAN/PROFILE

CITY DRAWING NUMBER
SHEET 08 OF 20

CONSULTANT DRAWING NO. CT-08