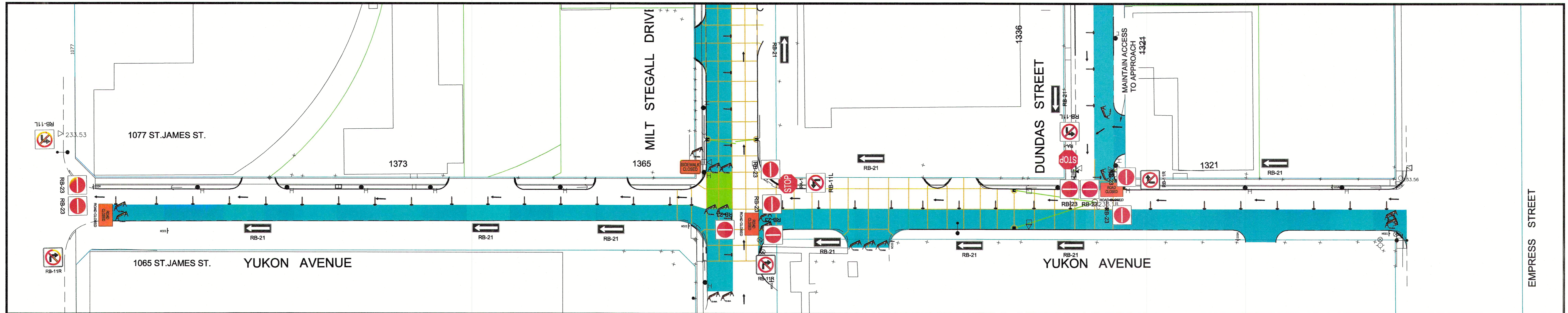
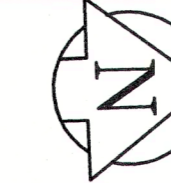


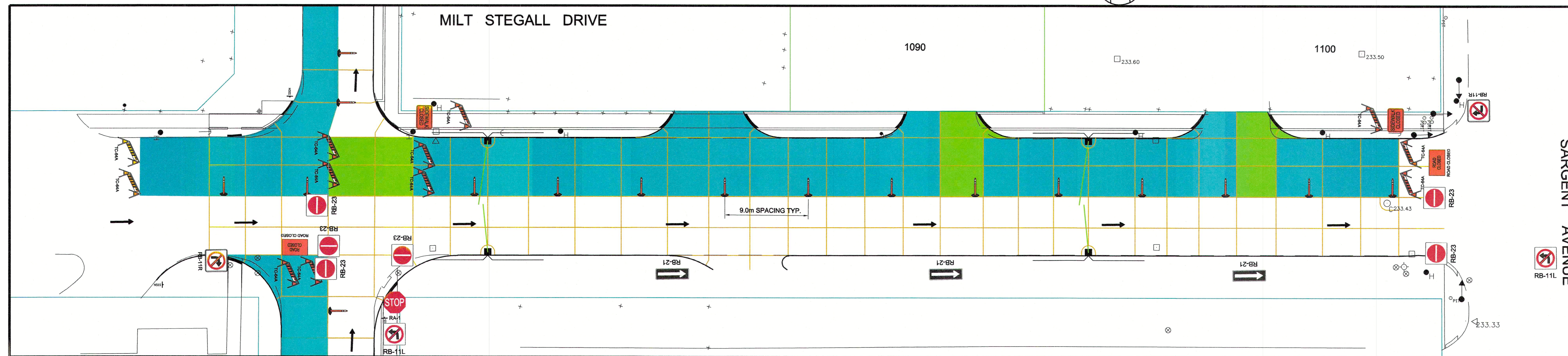
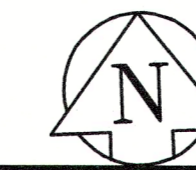
DUNDAS STREET - PLAN VIEW - STAGE 1

Scale 1:250



YUKON AVENUE - PLAN VIEW - STAGE 1

Scale 1:500



MILT STEGALL DRIVE - PLAN VIEW - STAGE 1

Scale 1:250



- NOTES:**
1. ALL TEMPORARY SIGNAGE AND TRAFFIC CONTROL TO BE IN ACCORDANCE WITH THE LATEST EDITION OF THE MANUAL OF TEMPORARY TRAFFIC CONTROL ON CITY STREETS. CONTRACTOR TO MAINTAIN VEHICLE ACCESS TO ALL SIDE STREETS, PRIVATE APPROACHES AT ALL TIMES UNLESS NOTED BY THE CONTRACT ADMINISTRATOR. ANY DISRUPTION TO BE APPROVED BY THE CONTRACT ADMINISTRATOR AND CONTRACTOR TO ADVISE OWNER.
 2. PROPERLY EQUIPPED FLAG PERSONS ARE REQUIRED WHEN MOVING ANY CONSTRUCTION VEHICLES INTO OR OUT OF TRAFFIC.
 3. CONTRACTOR TO INSTALL AND MAINTAIN ALL REQUIRED SIGNAGE. CONTRACTOR IS RESPONSIBLE FOR TRAFFIC CONTROL SIGNAGE AND REGULATORY SIGNAGE, WHICH INCLUDES POSTING PARKING RESTRICTIONS FOR CONSTRUCTION ACCESS.

LOCATION APPROVED UNDERGROUND STRUCTURES

SUPV. U/G STRUCTURES COMMITTEE DATE

NOTE:
LOCATION OF UNDERGROUND STRUCTURES AS SHOWN ARE BASED ON THE BEST INFORMATION AVAILABLE. BUT NO GUARANTEE IS GIVEN THAT ALL EXISTING UTILITIES ARE SHOWN OR THAT THE GIVEN LOCATIONS ARE EXACT. CONFIRMATION OF EXISTENCE AND EXACT LOCATION OF ALL SERVICES MUST BE OBTAINED FROM THE INDIVIDUAL UTILITIES BEFORE PROCEEDING WITH CONSTRUCTION.

B.M. #23 - et: 233.965 - S. side of Ellice Ave. E. of Empress St., Tbt ELEV. in Concrete foundation of No. 1320 Ellice Ave, 1m E. & 0.3m

NO.	REVISIONS	DATE	BY
0	ISSUED FOR TENDER	03/15/2022	BC
A	ISSUED FOR REVIEW	02/18/2022	BC



DESIGNED BY	BC	CHECKED BY	RC
DRAWN BY	RAM	APPROVED BY	RC
HOR. SCALE:	1:250	RELEASED FOR CONSTRUCTION BY:	
VERTICAL:	N/A	DATE	02/18/2022

ENGINEER'S SEAL

CONSULTANT DRAWING NO. CT-03

THE CITY OF WINNIPEG
PUBLIC WORKS DEPARTMENT
ENGINEERING DIVISION

2022 INDUSTRIAL STREET RENEWAL PROGRAM

DUNDAS STREET, YUKON STREET AND MILT STEGALL DRIVE
CONSTRUCTION SIGNAGE ANG STAGING
STAGE 1

CITY DRAWING NUMBER
SHEET 03 OF 20