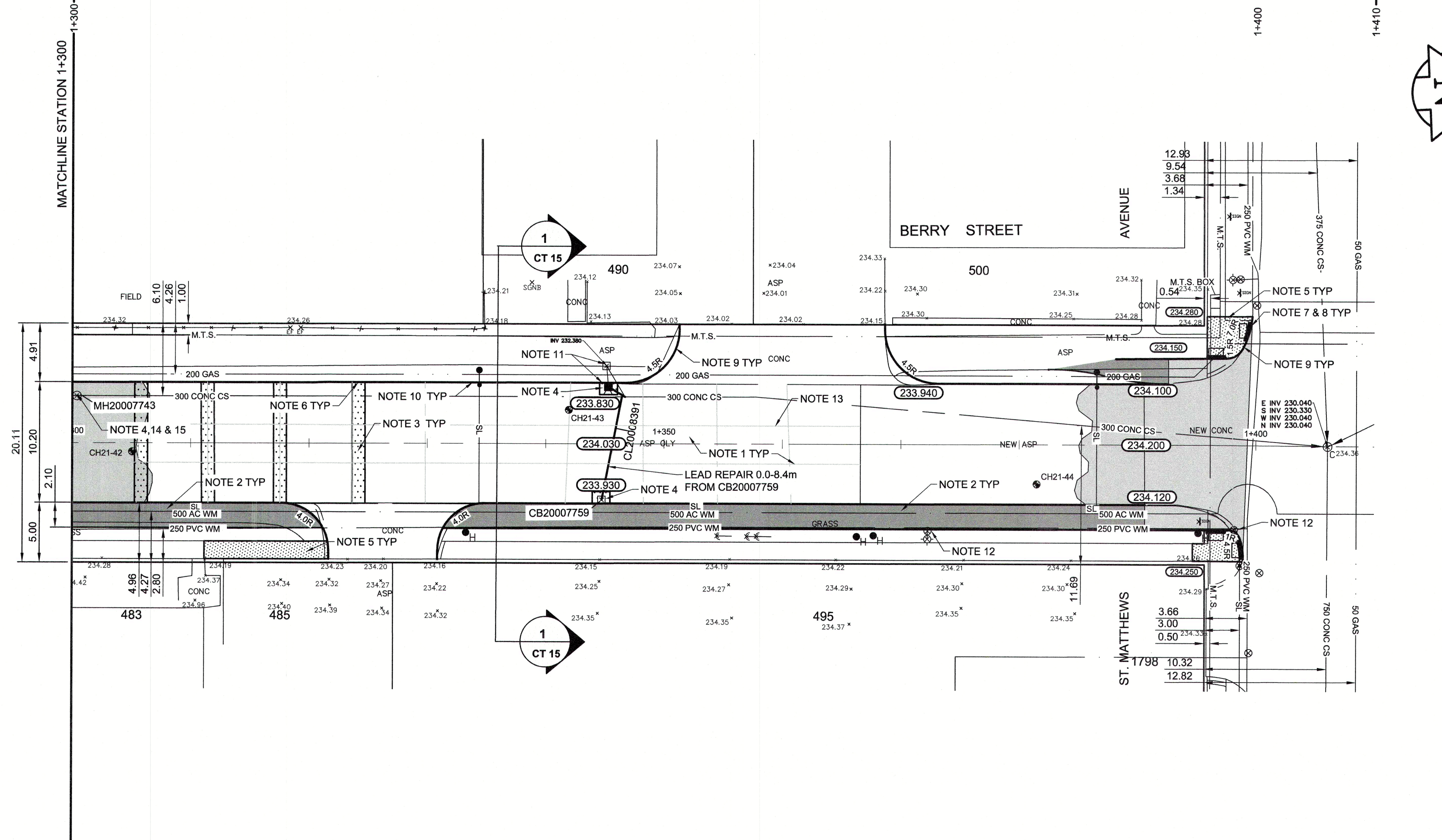
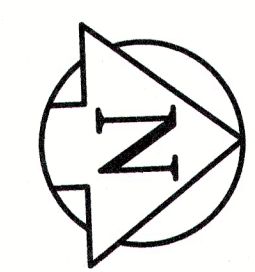


**1 CT 15 ASPHALT PATH TYPICAL CROSS SECTION-3**  
Scale NTS



- REFERENCE NOTES:**
- A. PAVEMENT DIMENSIONS ARE TO BACK OF CURB
  - B. BASELINE IS CENTRE LINE ROADWAY
  - C. PROPERTY LINES OBTAINED FROM CITY OF WINNIPEG L.B.I.S., AND NO SCALE FACTOR WAS APPLIED
  - D. REFER TO AECOM FIELD BOOK NO. 5113
- CONSTRUCTION NOTES:**
1. CONSTRUCT NEW ASPHALT PAVEMENT OVERLAY TYPE 1A (100mm AVG. THICKNESS)
  2. CONSTRUCT NEW ASPHALT BIKE PATHWAY PAVEMENT TYPE 1A (75mm THICKNESS) C/W COMPACTED 125mm OF LIMESTONE BASE COURSE, GEOGRID, 150mm OF 50mm LIMESTONE SUB-BASE AND SEPARATION/FILTRATION GEOTEXTILE
  3. REMOVE EXISTING CONCRETE PAVEMENT AND CONSTRUCT NEW 150mm REINFORCED CONCRETE PAVEMENT
  4. ADJUST EXISTING MANHOLE / CATCH BASIN TO GRADE
  5. RENEW EXISTING CONCRETE SIDEWALK
  6. INSTALL CONCRETE BARRIER CURB (SEPARATE SD-203A 150mm REVEAL)
  7. CONSTRUCT NEW CONCRETE CURB RAMP (10-12mm REVEAL, MONOLITHIC)
  8. INSTALL NEW DETECTABLE WARNING TILE
  9. REMOVE EXISTING BARRIER CURB AND CONSTRUCT NEW MODIFIED BARRIER CURB (150mm REVEAL)
  10. REMOVE EXISTING BARRIER CURB AND CONSTRUCT NEW CONCRETE BARRIER CURB (75mm REVEAL HT. DOWELED)
  11. REMOVE AND RELOCATE EXISTING CATCH BASIN AND CONNECT TO EXISTING 300 CONCRETE COMBINED SEWER
  12. ADJUST EXISTING WATER VALVE TO GRADE
  13. CONTRACT ADMINISTRATOR TO DETERMINE LOCATIONS FOR INSTALLATION OF PAVEMENT REPAIR FABRIC PRIOR TO ASPHALT PAVING
  14. INSTALL NEW CAST IRON RISER RING
  15. MH20007743 - REPLACE RISER TO 0.5m



**ENGINEERS GEOSCIENTISTS MANTOBA**  
Certificate of Authorization  
AECOM Canada Ltd.  
No. 4671 Date: 2022/02/17

**METRIC**  
WHOLE NUMBERS INDICATE MILLIMETRE  
DECIMALIZED NUMBERS INDICATE METRE

EXISTING	LEGEND - PLAN	PROPOSED	EXISTING	LEGEND - PLAN	PROPOSED	EXISTING	LEGEND - PROFILE	PROPOSED
150 mm W.M.	WATERMAIN	150 mm W.M.	---	HYDRO	---	---	Q PROFILE	---
300mm L.D.S.	LAND DRAINAGE SEWER	300mm L.D.S.	---	CONCRETE	---	---	WEST GUTTER	---
250mm W.W.S.	WASTEWATER SEWER	250mm W.W.S.	---	ASPHALT	---	---	EAST GUTTER	---
○	MANHOLE	○	---	PROPERTY LINE	---	---	WEST PROPERTY LINE	---
□	CATCH BASIN	□	---	SURVEY BAR	---	---	EAST PROPERTY LINE	---
▽	CATCH PIT	▽	---	ELEVATION	(235.750)	---		
+	JUNCTIONS	+	---	TREE	---	---		
---	CULVERT	---	---	SIDEWALK RAMP	---	---		
---	GAS	---	---	CONCRETE SIDEWALK	---	---		
---		---	---	FENCE	---	---		

**LOCATION APPROVED UNDERGROUND STRUCTURES**

SUPV. U/G STRUCTURES COMMITTEE DATE

**NOTE:**  
LOCATION OF UNDERGROUND STRUCTURES AS SHOWN ARE BASED ON THE BEST INFORMATION AVAILABLE, BUT NO GUARANTEE IS GIVEN THAT THE GIVEN LOCATIONS ARE EXACT. CONFIRMATION OF EXISTENCE AND EXACT LOCATION OF ALL SERVICES MUST BE OBTAINED FROM THE INDIVIDUAL UTILITIES BEFORE PROCEEDING WITH CONSTRUCTION.

B.M. #30 N.W. Corn. Queen St. & Silver Ave., Tdb. in S. Corn. foundation No. 424 Queen St., 1m E. & 0.2m below. ELEV. ELEVATION: 234.449m. BOOK # 5113.

**ISSUED FOR TENDER** 02/17/2022 BC

**ISSUED FOR REVIEW** 01/28/2022 BC

NO. REVISIONS DATE BY

**AECOM**

DESIGNED BY: BC CHECKED BY: BC/TF

DRAWN BY: AA APPROVED BY:

HOR. SCALE: 1=250  
VERTICAL: 1=10

RELEASED FOR CONSTRUCTION BY:

DATE: 02/17/2022

ENGINEER'S SEAL

PROVINCE OF MANITOBA

REGISTERED PROFESSIONAL ENGINEER

CONSULTANT DRAWING NO. CT-15

**THE CITY OF WINNIPEG**  
PUBLIC WORKS DEPARTMENT  
ENGINEERING DIVISION

2022 LOCAL AND INDUSTRIAL STREET RENEWAL PROGRAM

BERRY STREET - PORTAGE AVENUE TO ELLICE AVENUE ASPHALT PAVEMENT REHABILITATION STATION 1+300 TO ST. MATTHEWS AVENUE

CITY DRAWING NUMBER SHEET 15 OF 19