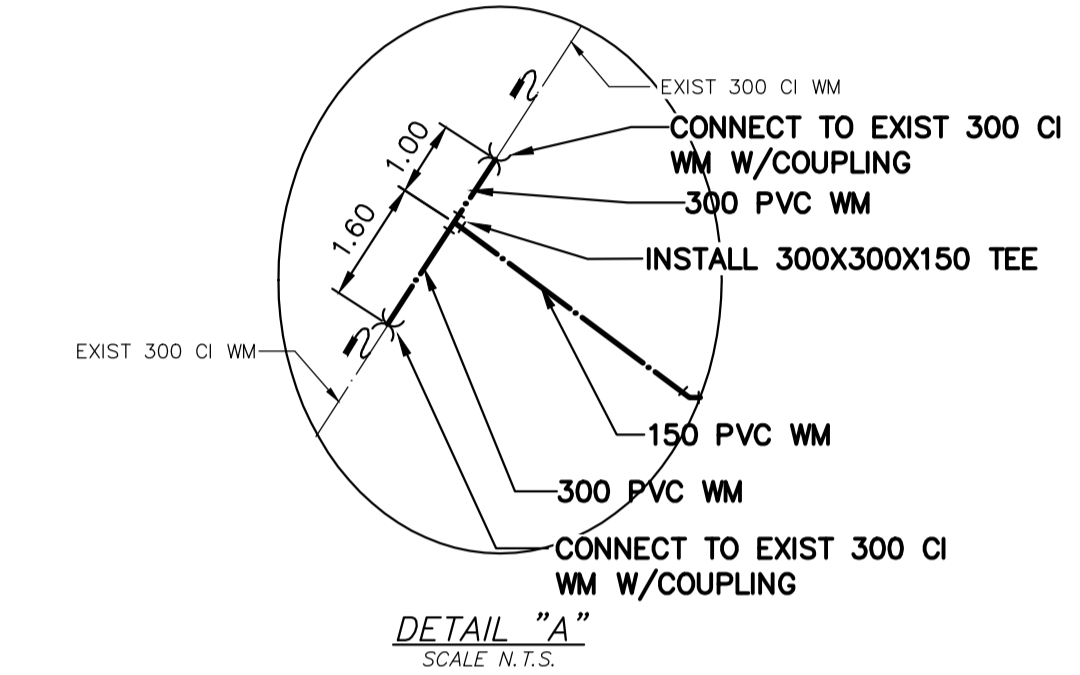


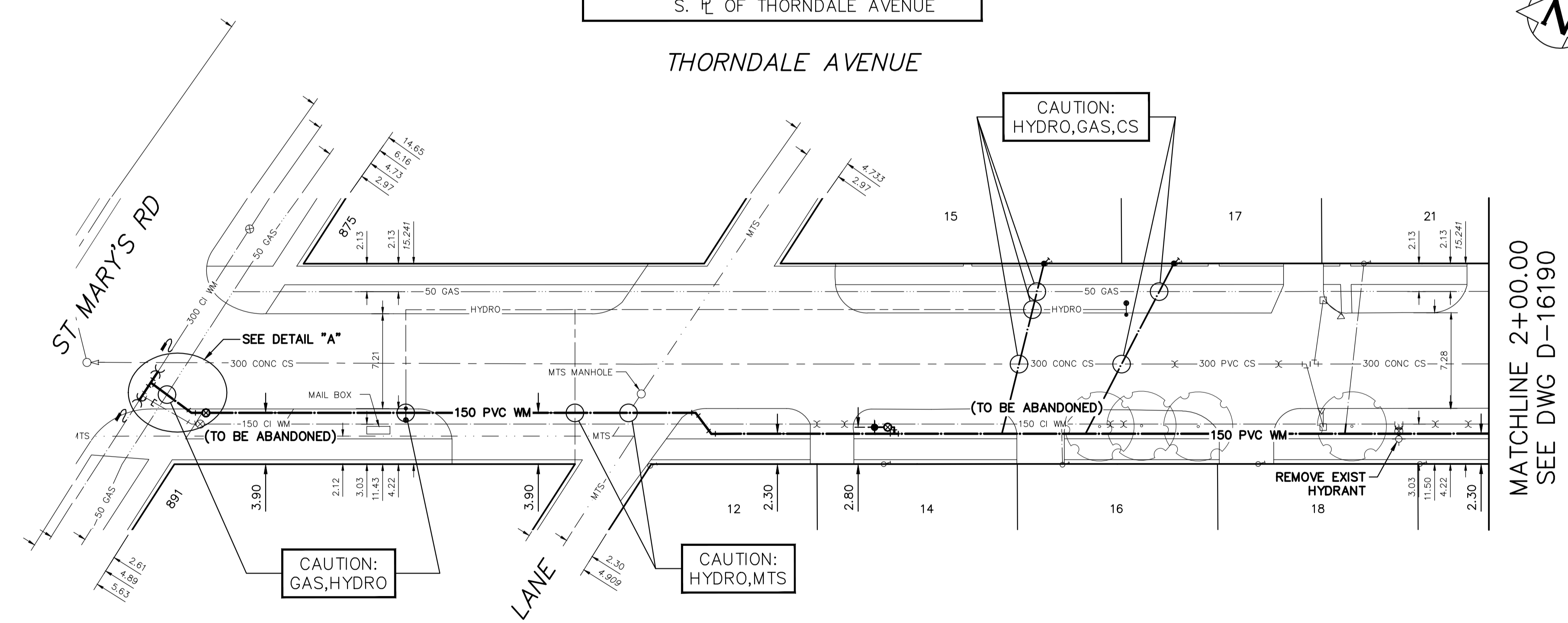
WATER SERVICE INFORMATION

ADDRESS	SIZE (mm) MATERIAL (STREET)	SIZE (mm) MATERIAL (PROP.)	SHORT & LONG MEASUREMENT	LINEAR DISTANCE (1) CORP LOCATION (2)	REMARKS
12 THORNDALE AVE RESIDENTIAL	12	CU	3.84 WWL HSE	-	RECONNECT SERVICE
14 THORNDALE AVE RESIDENTIAL	20	CU	36.232 EEL THORNDALE AVE	-	RECONNECT SERVICE
16 THORNDALE AVE RESIDENTIAL	20	CU	2.09 EWL HSE	-	RECONNECT SERVICE
16 THORNDALE AVE RESIDENTIAL	20	CU	53.876 EEL THORNDALE AVE	-	RECONNECT SERVICE
* 15 THORNDALE AVE RESIDENTIAL	20	CU	3.88 WEL HSE	-	RENEW TO P W/20 CU PREVIOUSLY FROZEN
15 THORNDALE AVE RESIDENTIAL	20	CU	66.194 EEL THORNDALE AVE	-	RECONNECT SERVICE
17 THORNDALE AVE RESIDENTIAL	20	CU	0.40 WWL HSE	OPP OF S/C	RECONNECT SERVICE
17 THORNDALE AVE RESIDENTIAL	20	CU	67.590 EEL THORNDALE AVE	-	RECONNECT SERVICE
* 17 THORNDALE AVE RESIDENTIAL	20	CU	7.79 WEL HSE	-	RENEW TO P W/20 CU PREVIOUSLY FROZEN
18 THORNDALE AVE RESIDENTIAL	12	CU	76.201 EEL THORNDALE AVE	-	RECONNECT SERVICE
18 THORNDALE AVE RESIDENTIAL	12	CU	1.10 WEL HSE	-	RECONNECT SERVICE
18 THORNDALE AVE RESIDENTIAL	12	CU	82.540 EEL THORNDALE AVE	-	RECONNECT SERVICE
20 THORNDALE AVE RESIDENTIAL	20	CU	2.97 WWL HSE	-	RECONNECT SERVICE
20 THORNDALE AVE RESIDENTIAL	20	CU	94.750 EEL THORNDALE AVE	-	RECONNECT SERVICE
21 THORNDALE AVE RESIDENTIAL	20	CU	1.20 EWL HSE	1.4 W OF S/C	RECONNECT SERVICE
21 THORNDALE AVE RESIDENTIAL	20	CU	90.589 EEL THORNDALE AVE	-	RECONNECT SERVICE

(1) LINEAR DISTANCE FROM THE S/C TO THE CORP USED ALONG BENDS & CURVED R.O.W.
 (2) DIRECTION FROM S/C
 * SERVICES TO BE RENEWED TO P. ALL OTHERS TO BE RECONNECTED

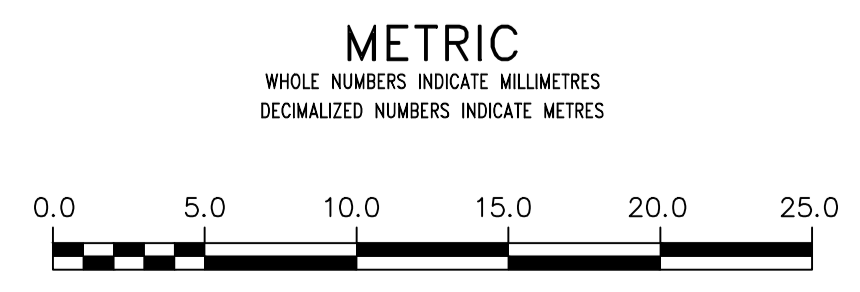


NOTE: CHAINAGES SHOWN ARE ALONG S. P. OF THORNDALE AVENUE



FOR INDEX SEE D-16187

NOTE: ALL VALVES TO BE INSTALLED CLOCKWISE TO CLOSE



WARNING
 IF POWER EQUIPMENT OR EXPLOSIVES ARE TO BE USED FOR EXCAVATION ON THIS PROJECT THE CONTRACTOR MUST:
 1) NOTIFY THE GAS COMPANY OF THE PROPOSED LOCATION OF EXCAVATION.
 2) TAKE PRECAUTION TO AVOID DAMAGE TO GAS COMPANY INSTALLATIONS.
 SEE PROVINCIAL REGULATION 210/72 FOR DETAILS

LOCATION APPROVED UNDERGROUND STRUCTURES
 SUPV. U/G STRUCTURES COMMITTEE DATE
 NOTE:
 LOCATION OF UNDERGROUND STRUCTURES AS SHOWN ARE BASED ON THE BEST INFORMATION AVAILABLE BUT NO GUARANTEE IS GIVEN THAT ALL EXISTING UTILITIES ARE SHOWN OR THAT THE GIVEN LOCATIONS ARE EXACT. CONFIRMATION OF EXISTENCE AND EXACT LOCATION OF ALL SERVICES MUST BE OBTAINED FROM THE INDIVIDUAL UTILITIES BEFORE PROCEEDING WITH CONSTRUCTION.

VERTICAL DATUM: CGVD28 (HT2.0 Geoid)
 HORIZONTAL DATUM: NAD83 (June 1990), Zone 14

NO.	REVISIONS	DATE	BY

DESIGNED BY	RG	CHECKED BY	SC
DRAWN BY	RS/AOM	APPROVED BY	KZ
SCALE:		RELEASED FOR CONSTRUCTION	
HORIZONTAL	1:250		
VERTICAL	1:50		
DATE	2022 03 08	DATE	
PLOT DATE:	2022 03 08		

ENGINEER'S SEAL
 CONSULTANT DRAWING NUMBER

THE CITY OF WINNIPEG
 WATER AND WASTE DEPARTMENT
 ENGINEERING DIVISION

2022 WATER MAIN RENEWALS
 CONTRACT 11
 THORNDALE AVENUE
 ST. MARY'S ROAD TO
 100 E ST. MARY'S ROAD

SHEET 4 OF 13
 CITY DRAWING NUMBER
 D-16189