

WATER SERVICE INFORMATION

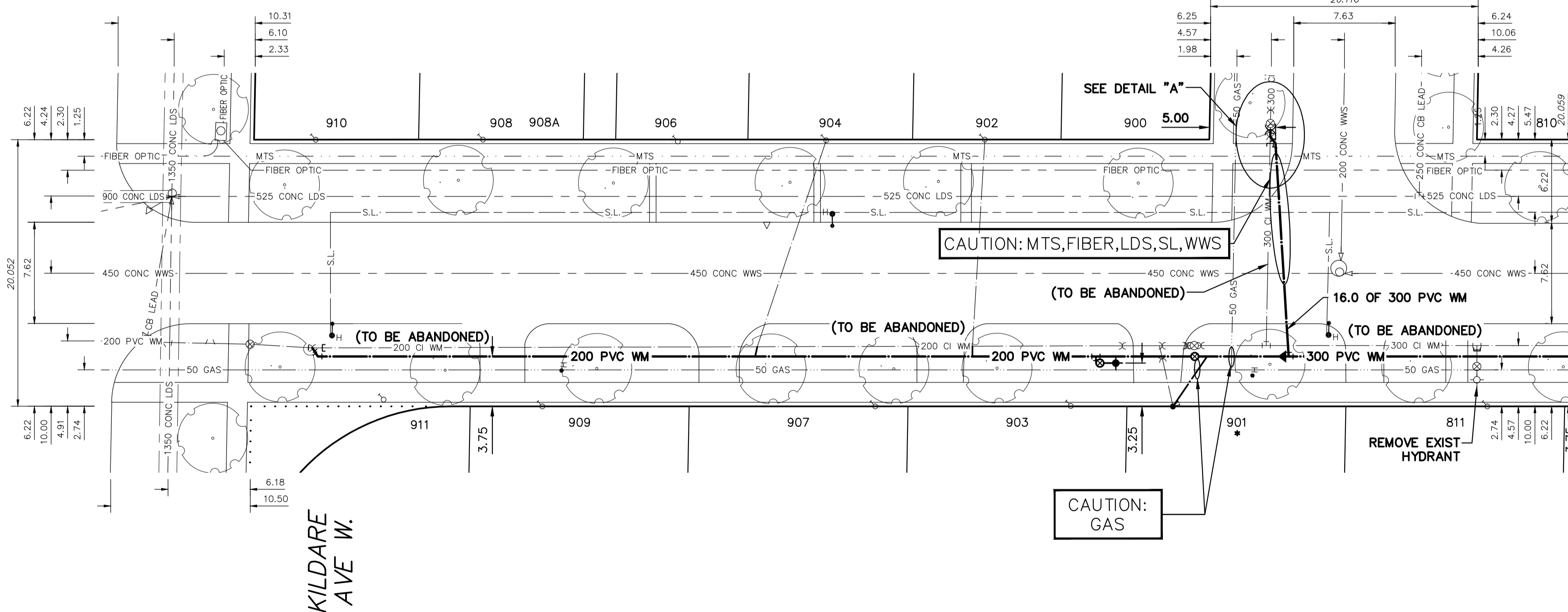
ADDRESS	SIZE (mm) MATERIAL (STREET)	SIZE (mm) (PROP.)	SHORT & LONG MEASUREMENT	CORP LOCATION	REMARKS
810 HOKA ST RESIDENTIAL	12 CU	12 LEAD	7.86 EWL BLDG	0.5 E OF S/C	OUTSIDE WORK LIMITS SERVICED OF WHITTIER AVE
811 HOKA ST RESIDENTIAL	- CU	20	4.00 SNL BLDG	-	RECONNECT SERVICE
900 HOKA ST RESIDENTIAL	20 CU	12 LEAD	20.900 SNL WHITTIER AVE W	0.4 W OF S/C	OUTSIDE WORK LIMITS SERVICED OF WHITTIER AVE
901 HOKA ST RESIDENTIAL	20 CU	12 LEAD	11.72 NSL BLDG	-	RENEW TO R W/20 CU
902 HOKA ST RESIDENTIAL	20 CU	20	2.740>NNL WHITTIER AVE W	0.9 N OF S/C	RECONNECT SERVICE
903 HOKA ST RESIDENTIAL	- CU	20	4.93 NSL BLDG	-	RECONNECT SERVICE
904 HOKA ST RESIDENTIAL	- CU	20	16.880>NNL WHITTIER AVE W	-	RECONNECT SERVICE
906 HOKA ST RESIDENTIAL	- CU	20	2.84 NSL BLDG	-	RECONNECT SERVICE
907 HOKA ST RESIDENTIAL	- CU	20	10.420>NNL WHITTIER AVE W	-	RECONNECT SERVICE
908 HOKA ST RESIDENTIAL	- CU	20	5.75 NSL BLDG	-	RECONNECT SERVICE
909 HOKA ST RESIDENTIAL	- CU	20	28.810>NNL WHITTIER AVE W	5.1 N OF S/C	RECONNECT SERVICE
910 HOKA ST RESIDENTIAL	- CU	12	4.22 NSL BLDG	-	RECONNECT SERVICE
911 HOKA ST RESIDENTIAL	- CU	12	39.960>NNL WHITTIER AVE W	-	RECONNECT SERVICE
908A HOKA ST RESIDENTIAL	- LEAD	12	46.910 SSL KILDARE AVE W	-	RECONNECT SERVICE
909A HOKA ST RESIDENTIAL	- LEAD	12	6.57 NSL BLDG	-	RECONNECT SERVICE
910A HOKA ST RESIDENTIAL	- LEAD	12	17.220 SSL KILDARE AVE W	-	RECONNECT SERVICE
911A HOKA ST RESIDENTIAL	- LEAD	12	17.220 SSL KILDARE AVE W	-	RECONNECT SERVICE
909 HOKA ST RESIDENTIAL	- LEAD	12	9.60 NSL BLDG	-	RECONNECT SERVICE
910 HOKA ST RESIDENTIAL	- LEAD	12	21.880 SSL KILDARE AVE W	-	RECONNECT SERVICE
911 HOKA ST RESIDENTIAL	- LEAD	12	6.90 NSL BLDG	-	RECONNECT SERVICE
912 HOKA ST RESIDENTIAL	- LEAD	12	4.640 SSL KILDARE AVE W	-	RECONNECT SERVICE
913 HOKA ST RESIDENTIAL	- LEAD	12	4.17 NSL BLDG	-	RECONNECT SERVICE
914 HOKA ST RESIDENTIAL	- LEAD	12	9.960 SSL KILDARE AVE W	-	RECONNECT SERVICE

* SERVICES TO BE RENEWED TO R. ALL OTHERS TO BE RECONNECTED

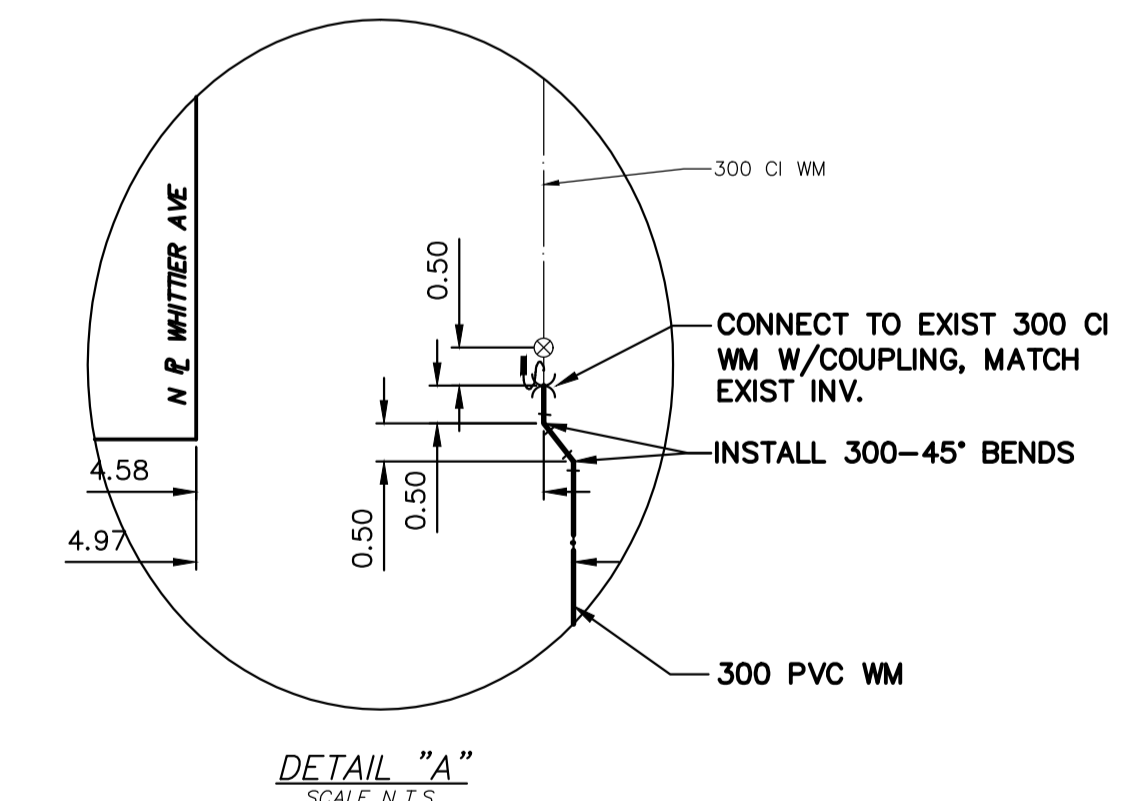
NOTE: CHAINAGES SHOWN ARE ALONG W. R. OF HOKA STREET

HOKA STREET

WHITTIER AVE



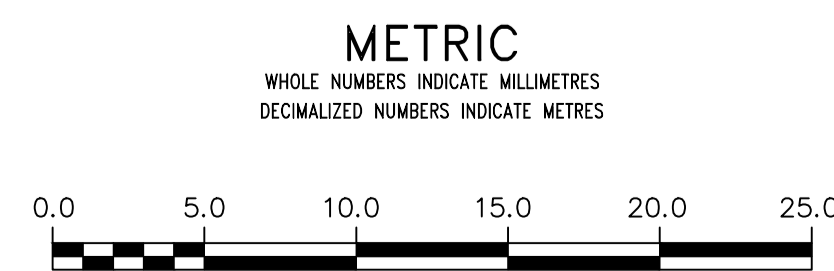
MATCHLINE 2+00.00
SEE DWG D-16172



DETAIL "A"
SCALE N.T.S.

FOR INDEX SEE
D-16167

NOTE: ALL VALVES TO BE INSTALLED
CLOCKWISE TO CLOSE



WARNING
IF POWER EQUIPMENT OR EXPLOSIVES ARE TO BE USED FOR EXCAVATION ON THIS PROJECT THE CONTRACTOR MUST:
1) NOTIFY THE GAS COMPANY OF THE PROPOSED LOCATION OF EXCAVATION.
2) TAKE PRECAUTION TO AVOID DAMAGE TO GAS COMPANY INSTALLATIONS.
SEE PROVINCIAL REGULATION 210/72 FOR DETAILS

LOCATION APPROVED
UNDERGROUND STRUCTURES
SUPV. U/G STRUCTURES COMMITTEE DATE
NOTE:
LOCATION OF UNDERGROUND STRUCTURES AS SHOWN ARE BASED ON THE BEST INFORMATION AVAILABLE BUT NO GUARANTEE IS GIVEN THAT ALL EXISTING UTILITIES ARE SHOWN OR THAT THE GIVEN LOCATIONS ARE EXACT. CONFIRMATION OF EXISTENCE AND EXACT LOCATION OF ALL SERVICES MUST BE OBTAINED FROM THE INDIVIDUAL UTILITIES BEFORE PROCEEDING WITH CONSTRUCTION.

VERTICAL DATUM: CGVD28 (HT2.0 Geoid)	
HORIZONTAL DATUM: NAD83 (June 1990), Zone 14	
DESIGNED BY	JB
CHECKED BY	SC
DRAWN BY	AJ
APPROVED BY	KZ
SCALE:	
HORIZONTAL	1:250
VERTICAL	1:50
RELEASED FOR CONSTRUCTION	
DATE	2022 03 14
PLOT DATE:	2022 03 14

ENGINEER'S SEAL	
CONSULTANT DRAWING NUMBER	

ENGINEER'S SEAL
CONSULTANT DRAWING NUMBER

THE CITY OF WINNIPEG
WATER AND WASTE DEPARTMENT
ENGINEERING DIVISION

2022 WATER MAIN RENEWALS
CONTRACT 1
HOKA STREET
KILDARE AVENUE WEST TO
8 S OF WHITTIER AVENUE

SHEET 6 OF 11
CITY DRAWING NUMBER
D-16171