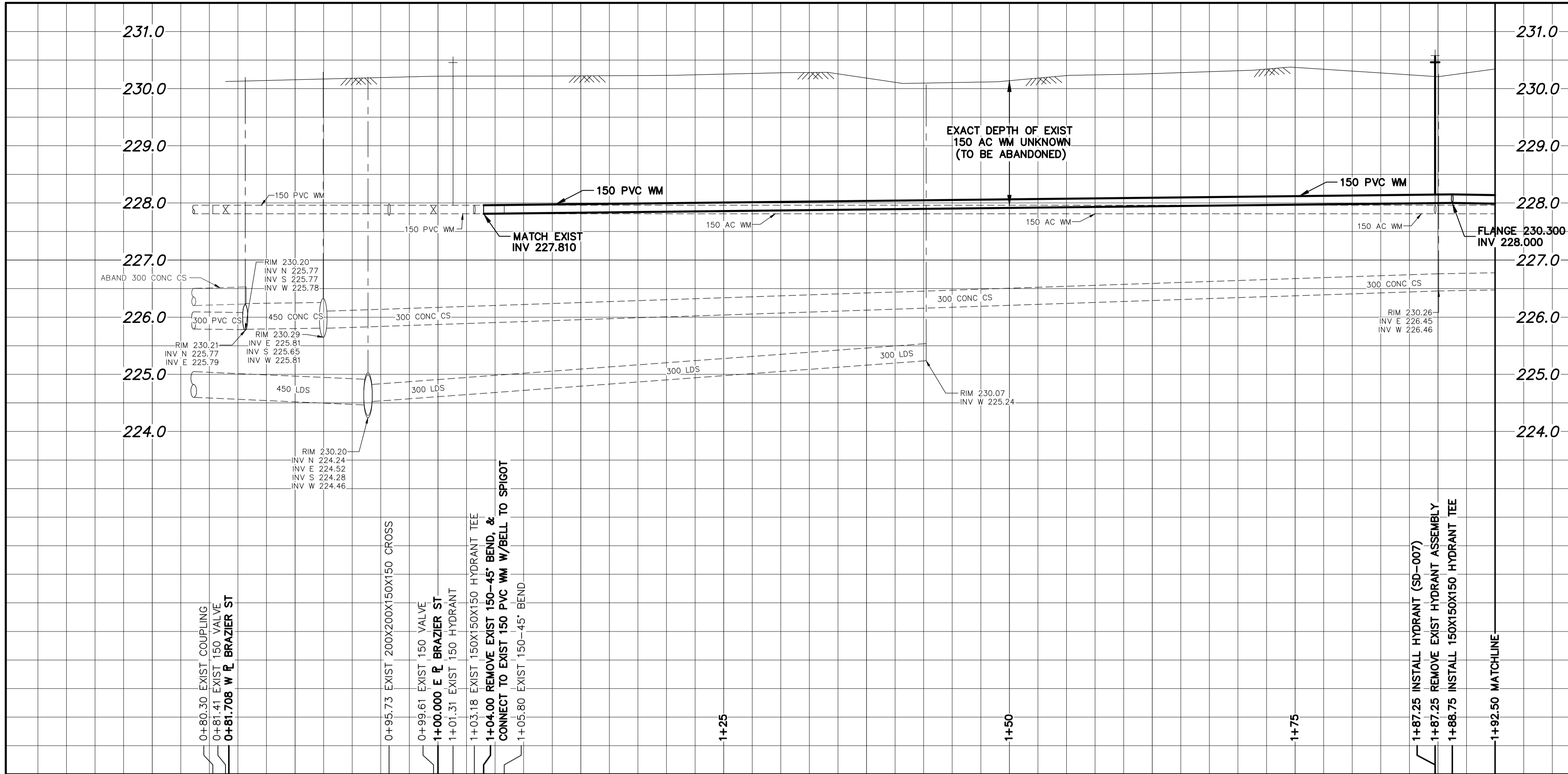


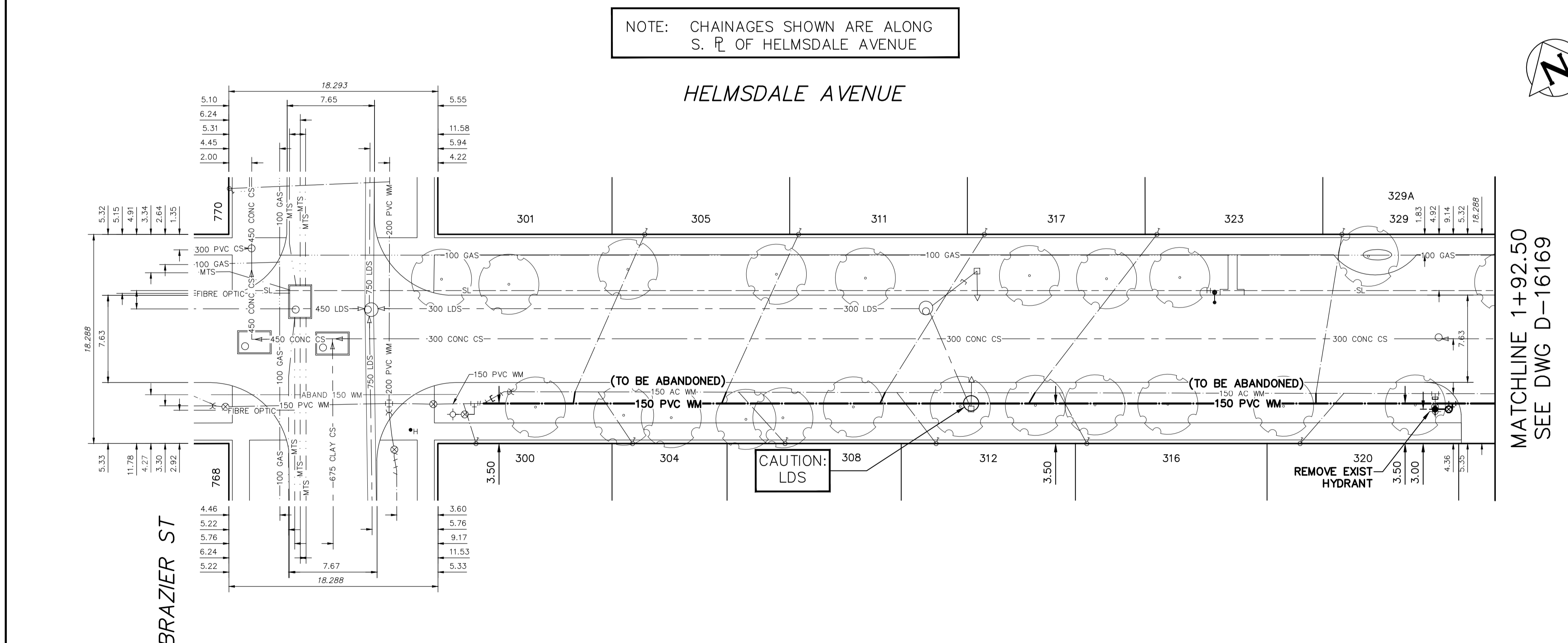
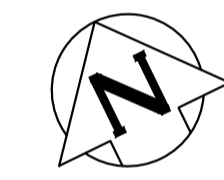
WATER SERVICE INFORMATION

ADDRESS	SIZE (mm) MATERIAL (STREET)	SIZE (mm) MATERIAL (PROP.)	SHORT & LONG MEASUREMENT	CORP LOCATION	REMARKS
300 HELMSDALE AVE	12	12	2.69 EWL HSE	1.1 W OF S/C	RECONNECT SERVICE
301 HELMSDALE AVE	20	20	3.330 EEL BRAZIER ST	0.2 N OF S/C	SERVICED OF BRAZIER ST
304 HELMSDALE AVE	20	20	1.60 NSL HSE		
305 HELMSDALE AVE	20	12	13.180>NNL HELMSDALE AVE		RECONNECT SERVICE
308 HELMSDALE AVE	20	20	1.08 EWL HSE		
311 HELMSDALE AVE	20	12	17.040 EEL BRAZIER ST	3.0 W OF S/C	RECONNECT SERVICE
312 HELMSDALE AVE	20	12	0.96 EWL HSE		
316 HELMSDALE AVE	20	12	18.100 EEL BRAZIER ST	6.1 W OF S/C	RECONNECT SERVICE
317 HELMSDALE AVE	12	12	3.53 EWL HSE		
323 HELMSDALE AVE	12	12	30.380 EEL BRAZIER ST	4.0 W OF S/C	RECONNECT SERVICE
329 HELMSDALE AVE	12	12	1.14 WWL HSE		
	12	12	31.560 EEL BRAZIER ST	6.3 W OF S/C	RECONNECT SERVICE
	12	12	0.55 EWL HSE		
	12	12	43.600 EEL BRAZIER ST	3.4 W OF S/C	RECONNECT SERVICE
	12	12	1.27 WWL BLDG		
	12	12	56.780 EEL BRAZIER ST	2.4 W OF S/C	RECONNECT SERVICE
	12	12	1.01 WWL BLDG		
	12	12	47.810 EEL BRAZIER ST	8.7 W OF S/C	RECONNECT SERVICE
	12	12	1.18 EWL HSE		
	12	12	75.450 EEL BRAZIER ST	3.8 E OF S/C	RECONNECT SERVICE
	12	12	1.20 WWL HSE		
	12	12	62.920 EEL BRAZIER ST	10.6 W OF S/C	RECONNECT SERVICE
	12	12	0.35 EWL HSE		
	12	12	79.110 EEL BRAZIER ST	2.3 W OF S/C	RECONNECT SERVICE

* SERVICES TO BE RENEWED TO R. ALL OTHERS TO BE RECONNECTED



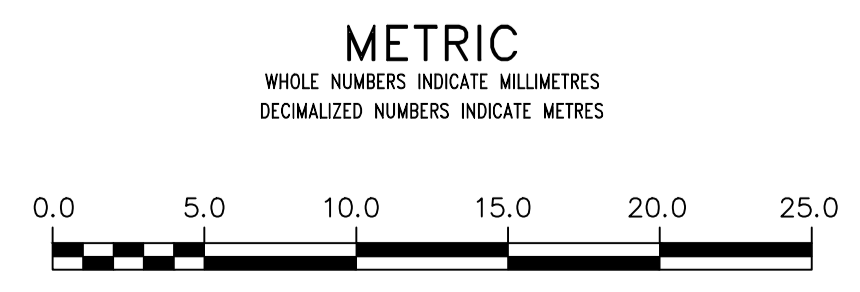
NOTE: CHAINAGES SHOWN ARE ALONG S. R. OF HELMSDALE AVENUE



MATCHLINE 1+92.50
SEE DWG D-16169

FOR INDEX SEE D-16167

NOTE: ALL VALVES TO BE INSTALLED COUNTERCLOCKWISE TO CLOSE



WARNING
IF POWER EQUIPMENT OR EXPLOSIVES ARE TO BE USED FOR EXCAVATION ON THIS PROJECT THE CONTRACTOR MUST:
1) NOTIFY THE GAS COMPANY OF THE PROPOSED LOCATION OF EXCAVATION.
2) TAKE PRECAUTION TO AVOID DAMAGE TO GAS COMPANY INSTALLATIONS.
SEE PROVINCIAL REGULATION 210/72 FOR DETAILS

LOCATION APPROVED
UNDERGROUND STRUCTURES
SUPV. U/G STRUCTURES COMMITTEE DATE
NOTE:
LOCATION OF UNDERGROUND STRUCTURES AS SHOWN ARE BASED ON THE BEST INFORMATION AVAILABLE BUT NO GUARANTEE IS GIVEN THAT ALL EXISTING UTILITIES ARE SHOWN OR THAT THE GIVEN LOCATIONS ARE EXACT. CONFIRMATION OF EXISTENCE AND EXACT LOCATION OF ALL SERVICES MUST BE OBTAINED FROM THE INDIVIDUAL UTILITIES BEFORE PROCEEDING WITH CONSTRUCTION.

VERTICAL DATUM: CGVD28 (HT2.0 Geoid)
HORIZONTAL DATUM: NAD83 (June 1990), Zone 14

NO.	REVISIONS	DATE	BY

DESIGNED BY	JB	CHECKED BY	SC
DRAWN BY	AJ	APPROVED BY	KZ
SCALE:		RELEASED FOR CONSTRUCTION	
HORIZONTAL	1:250		
VERTICAL	1:50		
DATE	2022 03 14	DATE	

ENGINEER'S SEAL
CONSULTANT DRAWING NUMBER

THE CITY OF WINNIPEG
WATER AND WASTE DEPARTMENT
ENGINEERING DIVISION

2022 WATER MAIN RENEWALS
CONTRACT 1
HELMSDALE AVENUE
BRAZIER STREET TO
92.5 E OF BRAZIER STREET

SHEET 3 OF 11
CITY DRAWING NUMBER
D-16168