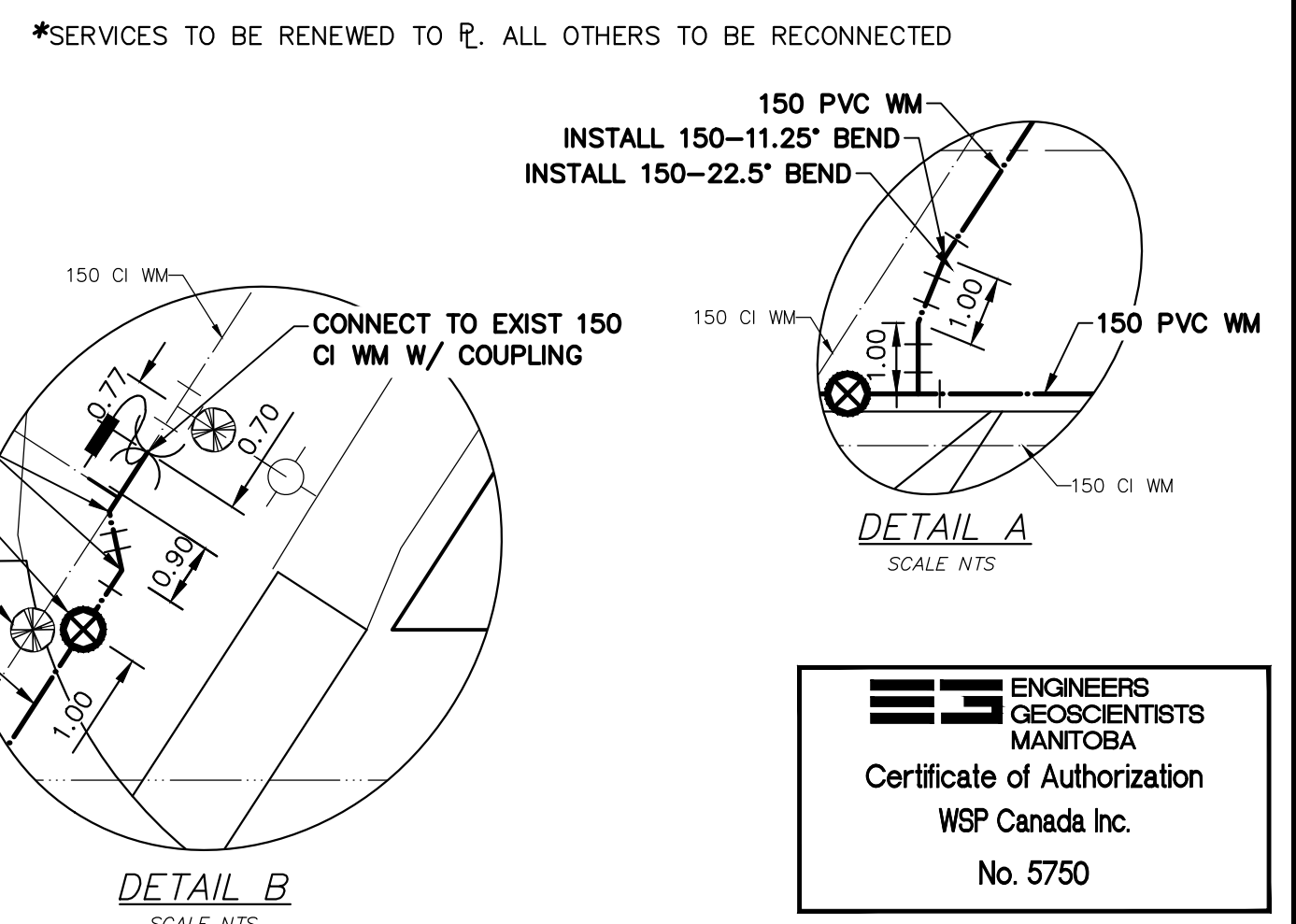


**WATER SERVICE INFORMATION**

ADDRESS	SIZE (mm) MATERIAL (STREET)	SIZE (mm) MATERIAL (PROP.)	SHORT & LONG MEASUREMENT	CORP. LOCATION	REMARKS
*894 & 896 PALMERSTON AVE	16	12	13' EEL HOME	9' EEL HOME	RENEW SERVICE
RESIDENTIAL	LEAD	LEAD	13' EEL HOME		
897 PALMERSTON AVE	20	20	12' SNL HSE	OPP OF S/C	RECONNECT SERVICE
RESIDENTIAL	CU	CU	41' NNL PALMERSTON		
*898 & 900 PALMERSTON AVE	20	12	4.5' EEL #900	18' EWL HOME	RENEW SERVICE
RESIDENTIAL	LEAD	LEAD	33' EWL HOME		
899 PALMERSTON AVE	20	20	14' W/EHL	OPP OF S/C	RECONNECT SERVICE
RESIDENTIAL	CU	CU	UNKN		
*902 PALMERSTON AVE	12	20	4.88m E/W PL	OPP OF S/C	RENEW SERVICE
RESIDENTIAL	LEAD	CU	15' WWL HOME		
*903 PALMERSTON AVE	12	20	1.2m WEEL #309	OPP OF S/C	RENEW SERVICE
RESIDENTIAL	CU	CU	2.2m WELL #309		
*905 PALMERSTON AVE	12	12	2' WEL CELLAR	3' W OF S/C	RENEW SERVICE
RESIDENTIAL	LEAD	LEAD	127' WWL HOME		
*906 PALMERSTON AVE	12	12	4' WEL BASEMENT	OPP OF S/C	RENEW SERVICE
RESIDENTIAL	LEAD	LEAD	44' WWL HOME		
907 PALMERSTON AVE	20	12	10' WEL HSE	18.5' W OF S/C	RECONNECT SERVICE
RESIDENTIAL	CU	CU	77' EEL ARLINGTON		
*908 PALMERSTON AVE	20	20	20' WEL HSE	8' W OF S/C	RENEW SERVICE
RESIDENTIAL	LEAD	LEAD	97' WWL HOME		
909 PALMERSTON AVE	20	20	OPP EL OF HSE	3' E OF S/C	RECONNECT SERVICE
RESIDENTIAL	CU	CU	36' EEL ARLINGTON		
910 PALMERSTON AVE	20	20	15' TWL HSE	1' E OF S/C	RECONNECT SERVICE
RESIDENTIAL	CU	CU	94' EEL ARLINGTON		
*912 PALMERSTON AVE	12	12	OPP EL FRONT DOOR	1' E OF S/C	RENEW SERVICE
RESIDENTIAL	CU	CU	30' EEL ARLINGTON		



NOTE: ALL VALVES TO BE INSTALLED COUNTERCLOCKWISE TO CLOSE

**METRIC**  
WHOLE NUMBERS INDICATE MILLIMETRES  
DECIMALIZED NUMBERS INDICATE METRES

**WARNING**

IF POWER EQUIPMENT OR EXPLOSIVES ARE TO BE USED FOR EXCAVATION ON THIS PROJECT THE CONTRACTOR MUST:

- 1) NOTIFY THE GAS COMPANY OF THE PROPOSED LOCATION OF EXCAVATION.
- 2) TAKE PRECAUTION TO AVOID DAMAGE TO GAS COMPANY INSTALLATIONS.

SEE PROVINCIAL REGULATION 21072 FOR DETAILS

**LOCATION APPROVED UNDERGROUND STRUCTURES**

SUPV. U/G STRUCTURES COMMITTEE DATE

NOTE:  
LOCATION OF UNDERGROUND STRUCTURES AS SHOWN ARE BASED ON THE BEST INFORMATION AVAILABLE BUT NO GUARANTEE IS GIVEN THAT ALL EXISTING UTILITIES ARE SHOWN OR THAT THE GIVEN LOCATIONS ARE EXACT. CONFIRMATION OF EXISTENCE AND EXACT LOCATION OF ALL SERVICES MUST BE OBTAINED FROM THE INDIVIDUAL UTILITIES BEFORE PROCEEDING WITH CONSTRUCTION.

B.M. ELEV.	NO.	REVISIONS	DATE	BY
	C	ISSUED FOR TENDER	06/04/22	K.G.
	B	DETAILED DESIGN SUBMISSION	01/04/22	K.G.
	A	PRELIMINARY DESIGN SUBMISSION	01/03/22	K.G.

**wsp**

1600 Buffalo Place  
Winnipeg, Manitoba  
R3T 6B8 Canada  
Phone: 204-477-6650  
wsp.com

DESIGNED BY	K.G.	CHECKED BY	S.M.
DRAWN BY	K.G.	APPROVED BY	S.M.
DATE	2022 04 06	RELEASED FOR CONSTRUCTION	

ENGINEER'S SEAL

CONSULTANT DRAWING NUMBER  
**221-01146-00-04**

**THE CITY OF WINNIPEG**  
WATER AND WASTE DEPARTMENT  
ENGINEERING DIVISION

2022 WATER MAIN RENEWALS - CONTRACT 9

**PALMERSTON AVENUE**  
ARLINGTON STREET  
115.0M EEL ARLINGTON STREET

SHEET **04** OF **07**  
CITY DRAWING NUMBER  
**D-16309**

ENGINEERS GEOSCIENTISTS MANITOBA  
Certificate of Authorization  
WSP Canada Inc.  
No. 5750