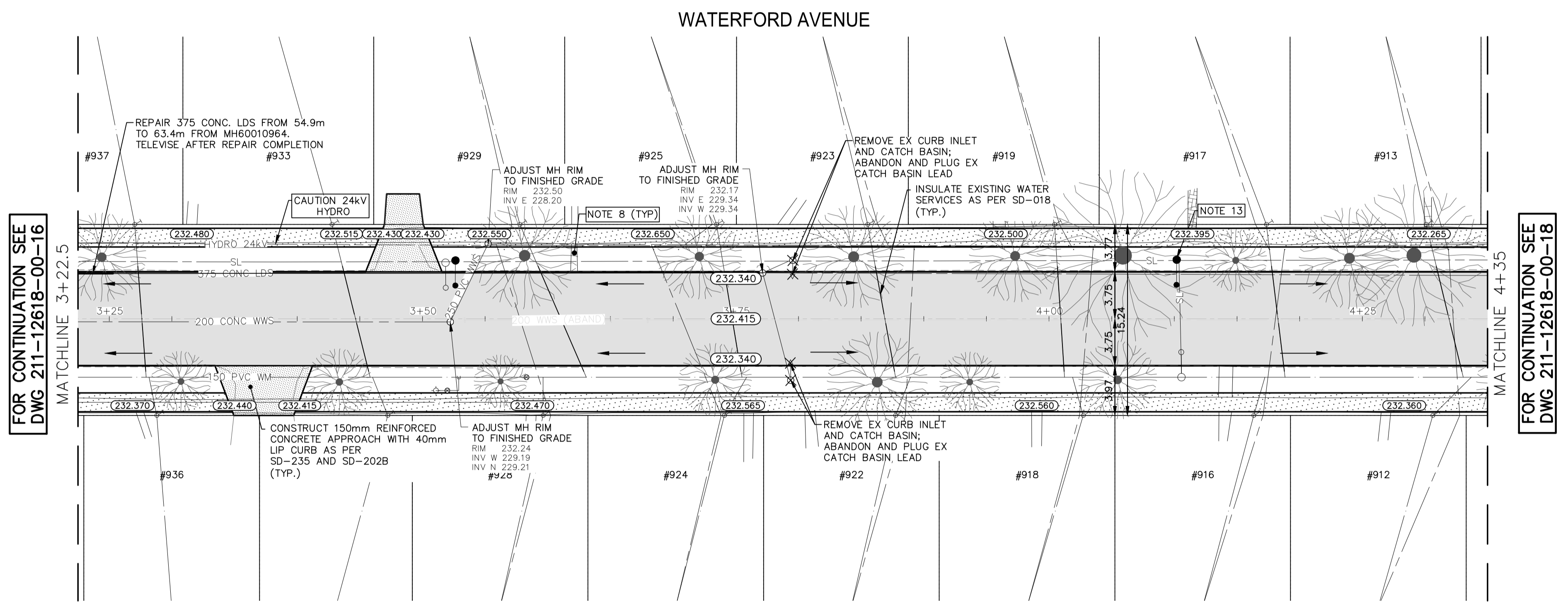
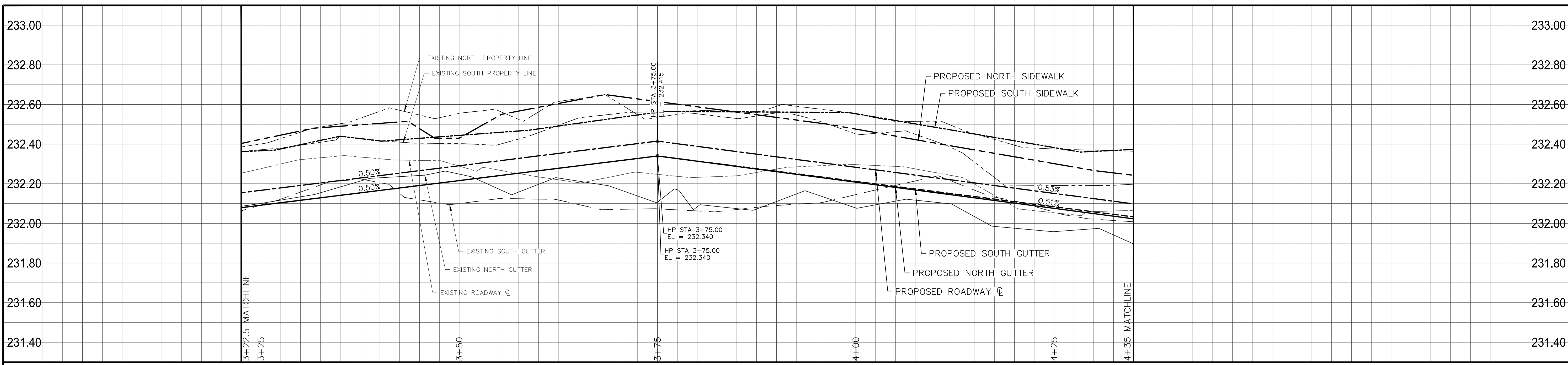
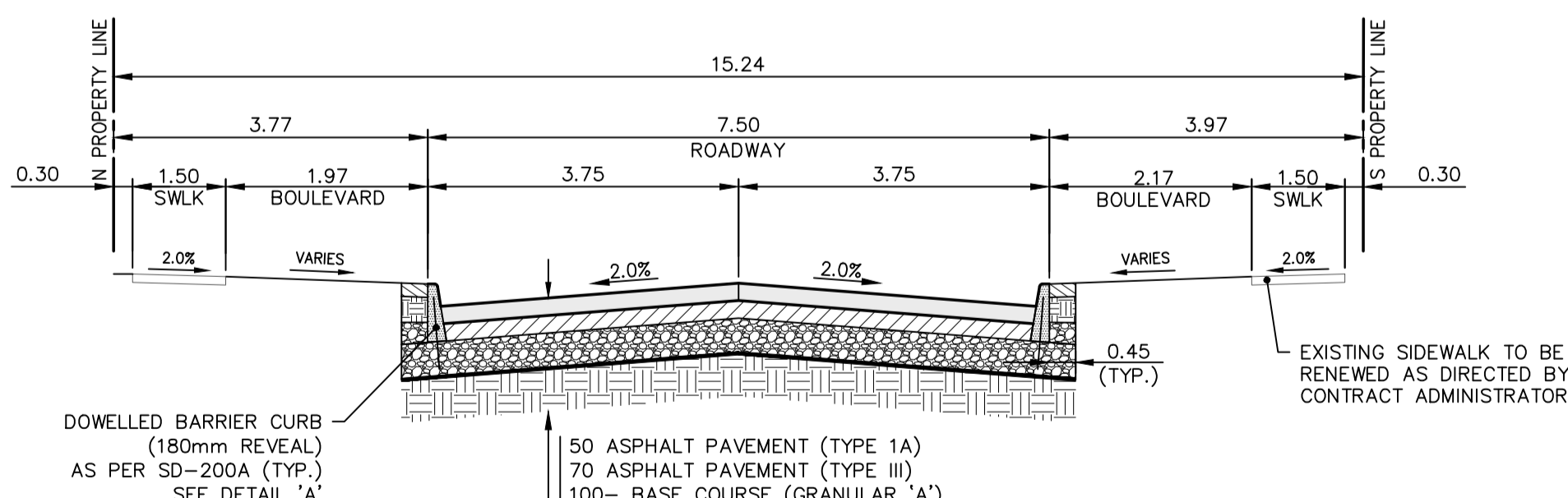
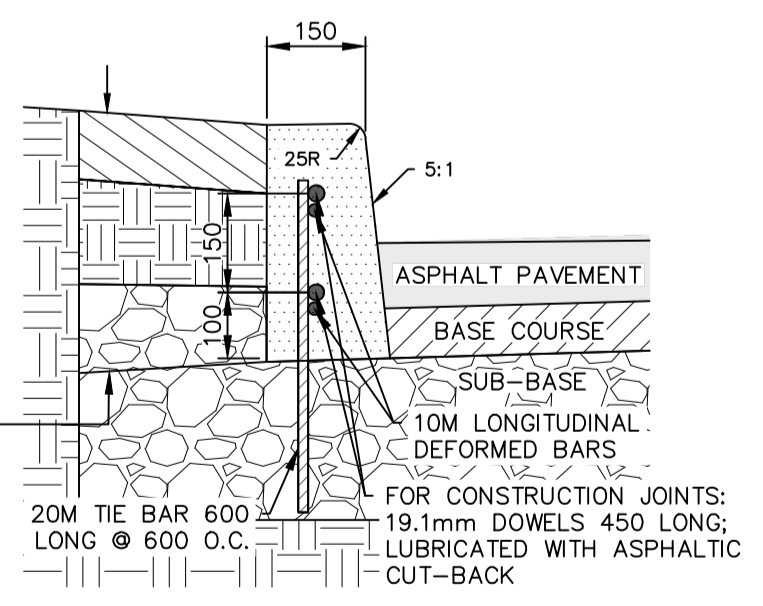


Mar 10, 2022 - 11:01am P:\2021\211-12618-00 - 2022 Street Program Package 22-R-03\1-0 Tech + Prof Services\4.11 Highways_Bridges\4.11.06 Drawings\03 Working Dwg\211-12618-00-Waterford Ave_Plan&Profile.dwg - Job:17 884--2021_Drawing-211-12618-00-17-RB



- NOTES:**
- ALL WORK AND MATERIALS TO BE IN ACCORDANCE WITH THE LATEST REVISION OF THE CITY OF WINNIPEG STANDARD CONSTRUCTION SPECIFICATIONS.
 - CONTRACTOR TO CONFIRM THE LOCATION OF ALL UTILITIES/SERVICES IN THE FIELD PRIOR TO CONSTRUCTION.
 - ALL ROADWAY DIMENSIONS SHOWN ARE TO BACK OF CURB.
 - EXISTING ASPHALT TO BE PLANED AS SHOWN OR AS DIRECTED BY CONTRACT ADMINISTRATOR.
 - EXISTING CURB AND SIDEWALK TO BE RENEWED AS DIRECTED BY CONTRACT ADMINISTRATOR.
 - MODIFIED BARRIER CURB TO BE CONSTRUCTED AT ALL INTERSECTION RADII AND ALLEY RADII.
 - INSTALL 40mm LIP CURB THROUGH ALL RESIDENTIAL APPROACHES.
 - ALL PRIVATE WALKWAYS TO BE ADJUSTED TO NEW SIDEWALK OR TOP OF CURB ELEVATION, AS DIRECTED BY THE CONTRACT ADMINISTRATOR.
 - CONTRACTORS TO TAKE PRECAUTIONARY STEPS TO PROTECT EXISTING TREES WITHIN THE LIMITS OF CONSTRUCTION FROM DAMAGE FROM CONSTRUCTION ACTIVITIES AS OUTLINED IN THE SPECIFICATIONS.
 - LAMP STANDARDS, HYDRO POLES, AND ANCHORS THAT REQUIRE TEMPORARY SUPPORT, REMOVAL OR REPLACEMENT, TO BE DONE SO AT THE EXPENSE OF THE CONTRACTOR AS NECESSARY.
 - ALL BOULEVARDS TO BE SODDED UNLESS OTHERWISE NOTED.
 - ADJUST ALL WATER VALVES, HYDRANTS, MANHOLES, AND CATCH BASINS IN WORK AREA TO GRADE.
 - RENEW STREET LIGHTING AS PER E24 AND 2021 Drawing 04707-DE-50000 IRON BAR



EXISTING	LEGEND-PLAN	PROPOSED	EXISTING	LEGEND-PLAN	PROPOSED	EXISTING	LEGEND-PROFILE	PROPOSED
---	LAND DRAINAGE SEWER	---	---	HYDRO POLE & LIGHT STANDARD	---	---	NORTH OR WEST SIDEWALK	---
---	WASTE WATER SEWER	---	---	LIGHT STANDARD OR TRAFFIC SIGNAL	---	---	SOUTH OR EAST SIDEWALK	---
---	HYDRO	---	---	HYDRO POLE	---	---	ROADWAY CENTRELINE	---
---	BELL/MTS	---	---	CURB RAMP	---	---	NORTH OR WEST GUTTER	---
---	GAS	---	---	DETECTABLE WARNING SURFACE TILE	---	---	SOUTH OR EAST GUTTER	---
---	SIGNALS	---	---	EDGE OF SIDEWALK	---	---		
---	MANHOLE	---	---	FENCE	---	---		
---	CATCH BASIN	---	---	PROPERTY LINE	---	---		
---	CURB INLET	---	---	EDGE OF ASPHALT	---	---		
---	UTILITIES ADJUSTED	---	---	EDGE OF CONCRETE	---	---		
---	PLUG	---	---	MODIFIED BARRIER CURB	---	---		
---	HYDRANT	---	---	BARRIER CURB	---	---		
---	VALVE	---	---	BARRIER CURB AND GUTTER	---	---		
---	CURB STOP	---	---	CONC SIDEWALK	---	---		
---	GROUND GRADE	---	---	CONCRETE SLAB	---	---		
---	PAVEMENT GRADE	---	---	ASPHALT	---	---		
---	ANCHOR	---	---	MILLED SURFACE	---	---		
---	CIVIC ADDRESS	---	---	PAVEMENT REPAIR FABRIC	---	---		

LOCATIONS APPROVED UNDERGROUND STRUCTURES

G.S.M. TOH @ SE CORNER WATERFORD AVENUE AND PEMBINA HIGHWAY
ELEV. 233.981

DESIGNED BY: RH/EL
DRAWN BY: RB/AG
CHECKED BY: LV
APPROVED BY: SM

WSP Canada Inc.
1600 Buffalo Place
Winnipeg, MB R3T 6B8
t. 204.477.6650
f. 204.474.2864
www.wsp.com

ENGINEER'S SEAL

FOR TENDER PURPOSES ONLY
NOT FOR CONSTRUCTION

THE CITY OF WINNIPEG
PUBLIC WORKS DEPARTMENT
ENGINEERING SERVICES DIVISION

2022 LOCAL STREET RENEWALS
WATERFORD AVENUE
ASPHALT RECONSTRUCTION
STA. 3+22.5 TO STA. 4+35

CITY DRAWING NUMBER
SHEET 17 OF 21
TENDER NO. 884-2021

CONSULTANT ACAD DWG. NO.
211-12618-00-17

METRIC
WHOLE NUMBERS INDICATE MILLIMETRES
DECIMALIZED NUMBERS INDICATE METRES

ENGINEERS GEOSCIENTISTS MANITOBA
Certificate of Authorization
WSP Canada Inc.
No. 5750