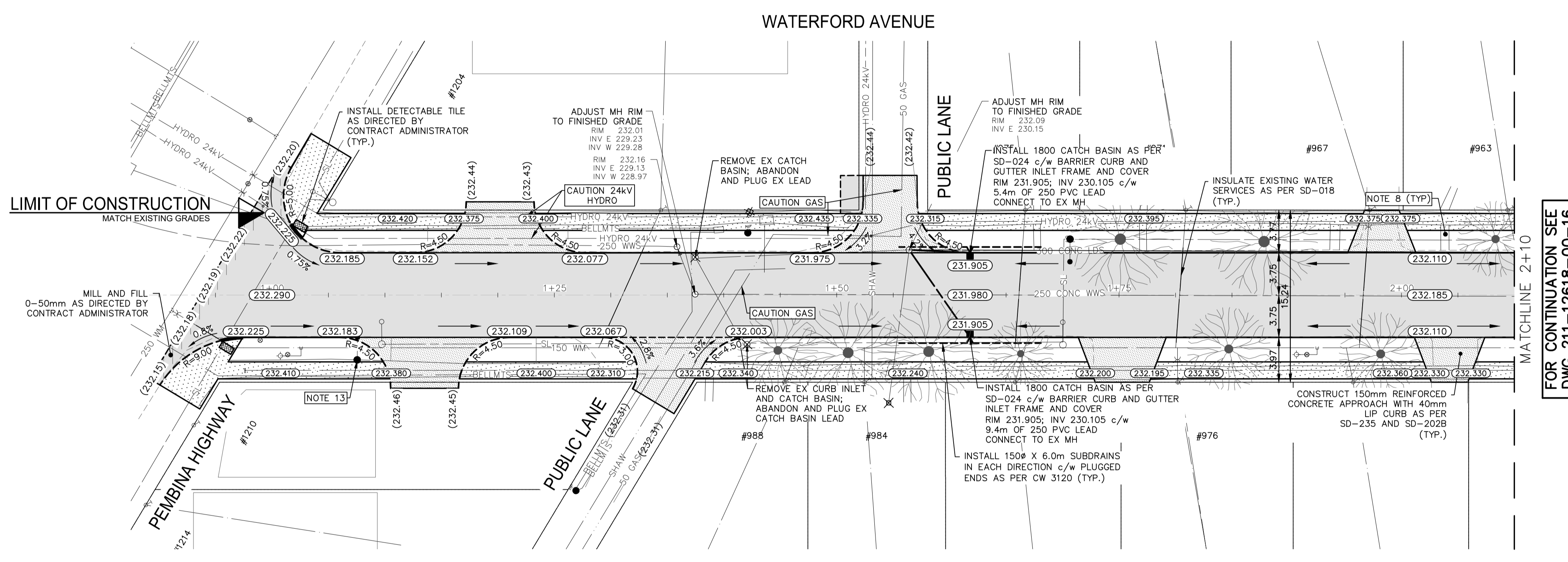
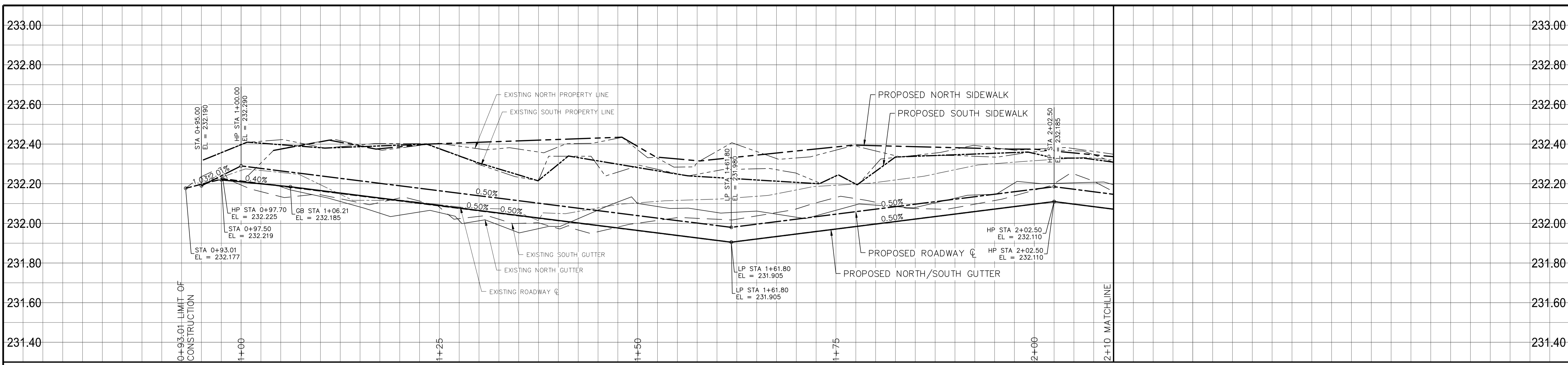
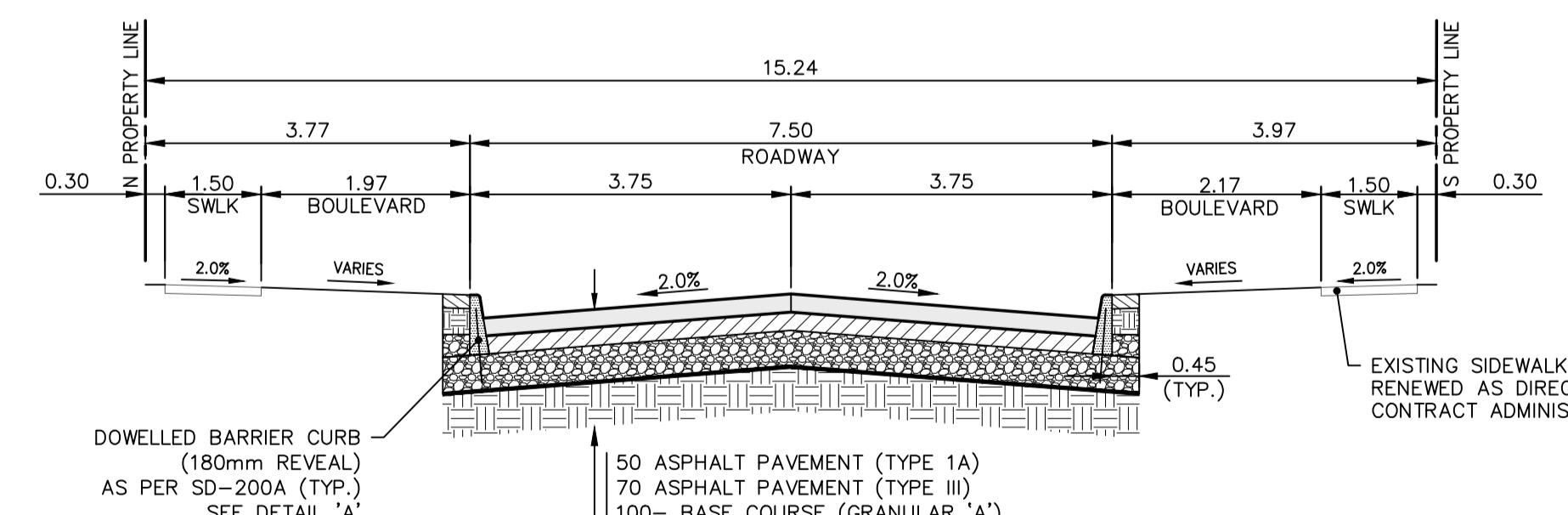
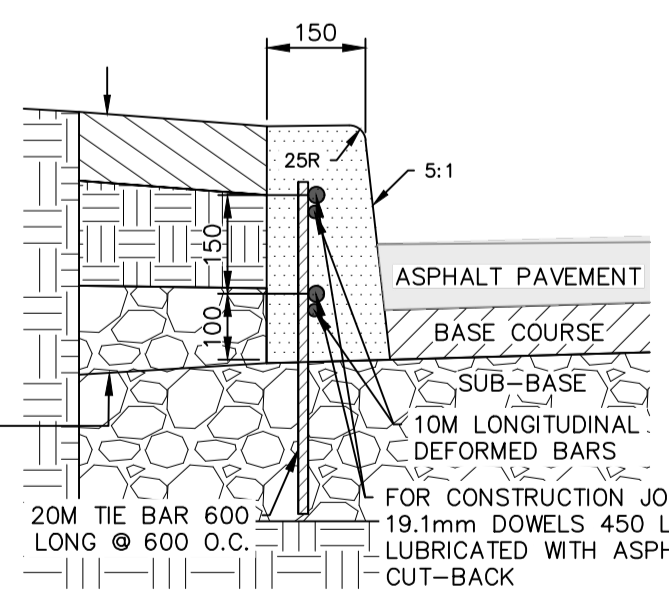


Mar 10, 2022 - 11:04am
 P:\2021\211-12618-00 - 2022 Street Program Package 22-RQ-03\4.0 Tech + Prof Services\4.11 Highways_Bridges\4.11.06 Drawings\03 Working Dwg\211-12618-00-Waterford Ave_Plan&Profile.dwg - Job:15 884--2021_Drawing-211-12618-00-15-RB



- NOTES:**
1. ALL WORK AND MATERIALS TO BE IN ACCORDANCE WITH THE LATEST REVISION OF THE CITY OF WINNIPEG STANDARD CONSTRUCTION SPECIFICATIONS.
 2. CONTRACTOR TO CONFIRM THE LOCATION OF ALL UTILITIES/SERVICES IN THE FIELD PRIOR TO CONSTRUCTION.
 3. ALL ROADWAY DIMENSIONS SHOWN ARE TO BACK OF CURB.
 4. EXISTING ASPHALT TO BE PLANNED AS SHOWN OR AS DIRECTED BY CONTRACT ADMINISTRATOR.
 5. EXISTING CURB AND SIDEWALK TO BE RENEWED AS DIRECTED BY CONTRACT ADMINISTRATOR.
 6. MODIFIED BARRIER CURB TO BE CONSTRUCTED AT ALL INTERSECTION RADII AND ALLEY RADII.
 7. INSTALL 40mm LIP CURB THROUGH ALL RESIDENTIAL APPROACHES.
 8. ALL PRIVATE WALKWAYS TO BE ADJUSTED TO NEW SIDEWALK OR TOP OF CURB ELEVATION, AS DIRECTED BY THE CONTRACT ADMINISTRATOR.
 9. CONTRACTORS TO TAKE PRECAUTIONARY STEPS TO PROTECT EXISTING TREES WITHIN THE LIMITS OF CONSTRUCTION FROM DAMAGE FROM CONSTRUCTION ACTIVITIES AS OUTLINED IN THE SPECIFICATIONS.
 10. LAMP STANDARDS, HYDRO POLES, AND ANCHORS THAT REQUIRE TEMPORARY SUPPORT, REMOVAL OR REPLACEMENT, TO BE DONE SO AT THE EXPENSE OF THE CONTRACTOR AS NECESSARY.
 11. ALL BOULEVARDS TO BE SODDED UNLESS OTHERWISE NOTED.
 12. ADJUST ALL WATER VALVES, HYDRANTS, MANHOLES, AND CATCH BASINS IN WORK AREA TO GRADE.
 13. RENEW STREET LIGHTING AS PER E24 AND 2021_Drawing_1-04707-DE-50000-P36541.



EXISTING	LEGEND-PLAN	PROPOSED	EXISTING	LEGEND-PLAN	PROPOSED	EXISTING	LEGEND-PROFILE	PROPOSED
---	WATER MAIN	---	---	IRON BAR	---	---	---	---
---	LAND DRAINAGE SEWER	---	---	HYDRO POLE & LIGHT STANDARD	---	---	---	---
---	WASTE WATER SEWER	---	---	LIGHT STANDARD OR TRAFFIC SIGNAL	---	---	---	---
---	HYDRO	---	---	HYDRO POLE	---	---	---	---
---	BELL/MTS	---	---	CURB RAMP	---	---	---	---
---	GAS	---	---	DETECTABLE WARNING SURFACE TILE	---	---	---	---
---	SIGNALS	---	---	EDGE OF SIDEWALK	---	---	---	---
---	MANHOLE	---	---	FENCE	---	---	---	---
---	CATCH BASIN	---	---	PROPERTY LINE	---	---	---	---
---	CURB INLET	---	---	EDGE OF ASPHALT	---	---	---	---
---	UTILITIES ADJUSTED	---	---	EDGE OF CONCRETE	---	---	---	---
---	PLUG	---	---	MODIFIED BARRIER CURB	---	---	---	---
---	HYDRANT	---	---	BARRIER CURB	---	---	---	---
---	VALVE	---	---	BARRIER CURB AND GUTTER	---	---	---	---
---	CURB STOP	---	---	CONC SIDEWALK	---	---	---	---
---	GROUND GRADE	---	---	CONCRETE SLAB	---	---	---	---
---	PAVEMENT GRADE	---	---	ASPHALT	---	---	---	---
---	ANCHOR	---	---	MILLED SURFACE	---	---	---	---
---	#111 CIVIC ADDRESS	---	---	PAVEMENT REPAIR FABRIC	---	---	---	---
---	EXISTING LEGEND-PLAN	---	---	PROPOSED LEGEND-PLAN	---	---	---	---
---	PROPOSED LEGEND-PLAN	---	---	EXISTING LEGEND-PROFILE	---	---	---	---
---	EXISTING LEGEND-PROFILE	---	---	PROPOSED LEGEND-PROFILE	---	---	---	---

LOCATIONS APPROVED UNDERGROUND STRUCTURES

G.M. TOH @ SE CORNER WATERFORD AVENUE AND PEMBINA HIGHWAY
ELEV. 233.981

SIGNED BY: _____ DATE: _____

LOCATION OF UNDERGROUND STRUCTURES AS SHOWN ARE BASED ON THE BEST INFORMATION AVAILABLE BUT NO GUARANTEE IS GIVEN THAT ALL EXISTING UTILITIES ARE SHOWN OR THAT THE GIVEN LOCATIONS ARE EXACT CONFIRMATION OF EXISTENCE AND EXACT LOCATION OF ALL SERVICES MUST BE OBTAINED FROM THE INDIVIDUAL UTILITIES BEFORE PROCEEDING

NO.	REVISIONS	DATE	BY
A	DETAILED DESIGN REVIEW	20220309	RB
B	ISSUED FOR TENDER	20220309	RB

WSP

DESIGNED BY: RH/EL
CHECKED BY: LV

DRAWN BY: RB/AG
APPROVED BY: SM

HOR. SCALE: 1:250
VERTICAL SCALE: 1:10

RELEASED FOR CONSTRUCTION: _____ DATE: _____

NO. REVISIONS: _____ DATE: _____

FOR TENDER PURPOSES ONLY
NOT FOR CONSTRUCTION

THE CITY OF WINNIPEG
PUBLIC WORKS DEPARTMENT
ENGINEERING SERVICES DIVISION

2022 LOCAL STREET RENEWALS
WATERFORD AVENUE
ASPHALT RECONSTRUCTION
STA. 0+94.90 TO STA. 2+10

WSP Canada Inc.
1600 Buffalo Place
Winnipeg, MB R3T 6B8
t. 204.477.6650
f. 204.474.2864
www.wsp.com

ENGINEER'S SEAL

CITY DRAWING NUMBER: _____
SHEET 15 OF 21
TENDER NO. 884-2021

CONSULTANT ACAD DWG. NO. 211-12618-00-15

METRIC
WHOLE NUMBERS INDICATE MILLIMETRES
DECIMALIZED NUMBERS INDICATE METRES

ENGINEERS
GEOSCIENTISTS
MANITOBA

Certificate of Authorization
WSP Canada Inc.
No. 5750