

**WATER SERVICE INFORMATION**

| ADDRESS                          | SIZE (mm)<br>MATERIAL<br>(STREET) | SIZE (mm)<br>MATERIAL<br>(PROP.) | SHORT & LONG<br>MEASUREMENT                 | LINEAR DISTANCE (1)<br>CORP LOCATION (2) | REMARKS           |
|----------------------------------|-----------------------------------|----------------------------------|---|--|-------------------|
| 1486 CHEVRIER BLVD<br>COMMERCIAL | 50<br>CU                          | 50<br>CU                         | 21.03 WVL BLDG<br>41.472 EEL NEWMARKET BLVD | OPP S/C                                  | RECONNECT SERVICE |
| 1501 CHEVRIER BLVD<br>COMMERCIAL | 25<br>CU                          | 25<br>CU                         | 39.63 WEL BLDG<br>53.178 EEL NEWMARKET BLVD | OPP S/C                                  | RECONNECT SERVICE |
| 1501 CHEVRIER BLVD<br>SPRINKLER  | 250<br>PVC                        | 250<br>PVC                       | 39.63 WEL BLDG<br>53.178 EEL NEWMARKET BLVD | OPP S/C                                  | RECONNECT SERVICE |

(1) LINEAR DISTANCE FROM THE S/C TO THE CORP USED ALONG BENDS & CURVED R.O.W.  
(2) DIRECTION FROM S/C

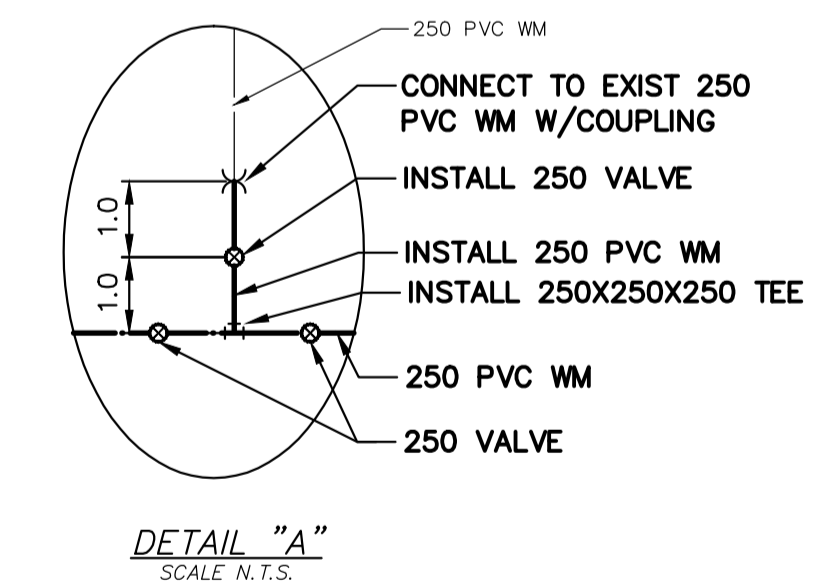
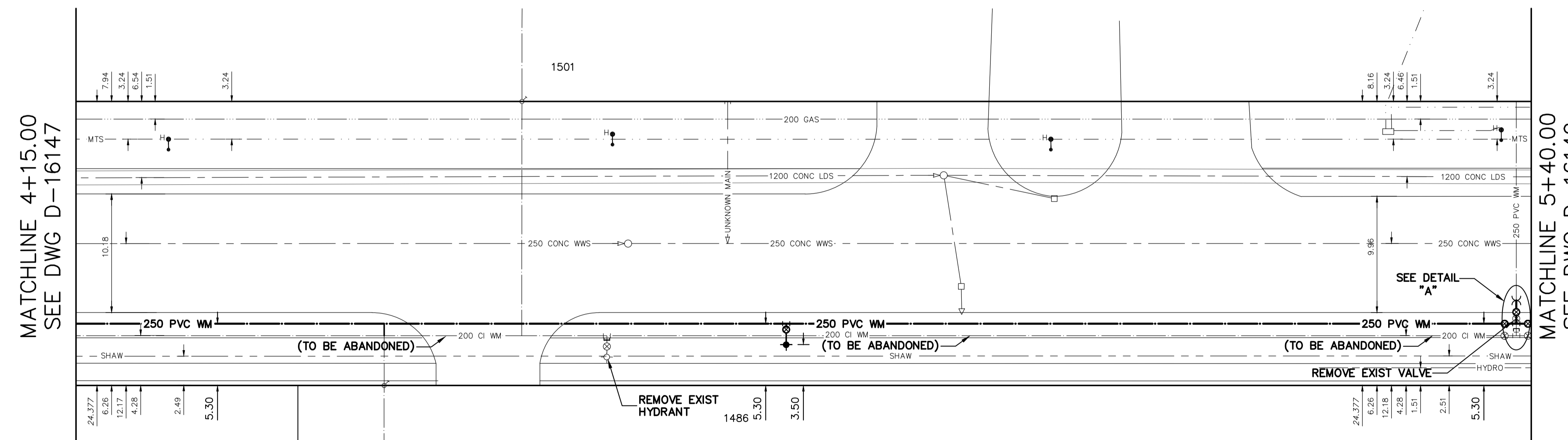
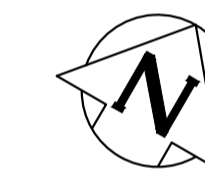
• SERVICES TO BE RENEWED TO R. ALL OTHERS TO BE RECONNECTED

**CONSTRUCTION NOTES**

- Permanent restoration of the asphalt active transportation path, separate concrete splash strip and concrete sidewalk to be in accordance with E5.

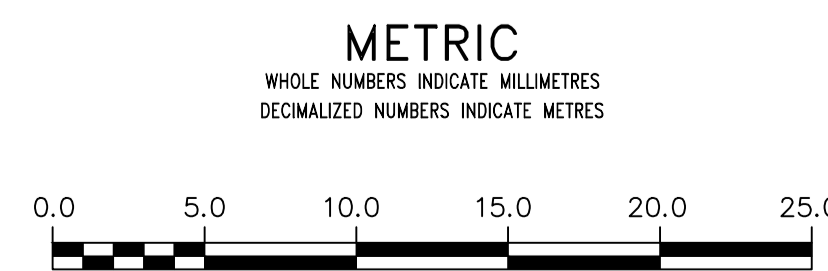
NOTE: CHAINAGES SHOWN ARE ALONG S. R. OF CHEVRIER BOULEVARD

**CHEVRIER BOULEVARD**



FOR INDEX SEE D-16144

NOTE: ALL VALVES TO BE INSTALLED CLOCKWISE TO CLOSE



**WARNING**  
IF POWER EQUIPMENT OR EXPLOSIVES ARE TO BE USED FOR EXCAVATION ON THIS PROJECT THE CONTRACTOR MUST:  
1) NOTIFY THE GAS COMPANY OF THE PROPOSED LOCATION OF EXCAVATION.  
2) TAKE PRECAUTION TO AVOID DAMAGE TO GAS COMPANY INSTALLATIONS.  
SEE PROVINCIAL REGULATION 210/72 FOR DETAILS

**LOCATION APPROVED**  
UNDERGROUND STRUCTURES  
SUPV. U/G STRUCTURES COMMITTEE DATE  
NOTE:  
LOCATION OF UNDERGROUND STRUCTURES AS SHOWN ARE BASED ON THE BEST INFORMATION AVAILABLE BUT NO GUARANTEE IS GIVEN THAT ALL EXISTING UTILITIES ARE SHOWN OR THAT THE GIVEN LOCATIONS ARE EXACT. CONFIRMATION OF EXISTENCE AND EXACT LOCATION OF ALL SERVICES MUST BE OBTAINED FROM THE INDIVIDUAL UTILITIES BEFORE PROCEEDING WITH CONSTRUCTION.

VERTICAL DATUM: CGVD28 (HT2.0 Geoid)  
HORIZONTAL DATUM: NAD83 (June 1990), Zone 14

| NO. | REVISIONS | DATE | BY |
|-----|-----------|------|----|
|     |           |      |    |

|             |            |                           |    |
|-------------|------------|---------------------------|----|
| DESIGNED BY | RG         | CHECKED BY                | SC |
| DRAWN BY    | RS         | APPROVED BY               | KZ |
| SCALE:      |            | RELEASED FOR CONSTRUCTION |    |
| HORIZONTAL  | 1:250      |                           |    |
| VERTICAL    | 1:50       |                           |    |
| DATE        | 2022 05 12 | DATE                      |    |

ENGINEER'S SEAL  
CONSULTANT DRAWING NUMBER

**THE CITY OF WINNIPEG**  
WATER AND WASTE DEPARTMENT  
ENGINEERING DIVISION

2022 WATER MAIN RENEWALS  
CONTRACT 13  
**CHEVRIER BOULEVARD**  
15.0 E OF NEWMARKET BOULEVARD TO  
140 E OF NEWMARKET BOULEVARD

SHEET 6 OF 11  
CITY DRAWING NUMBER  
D-16148