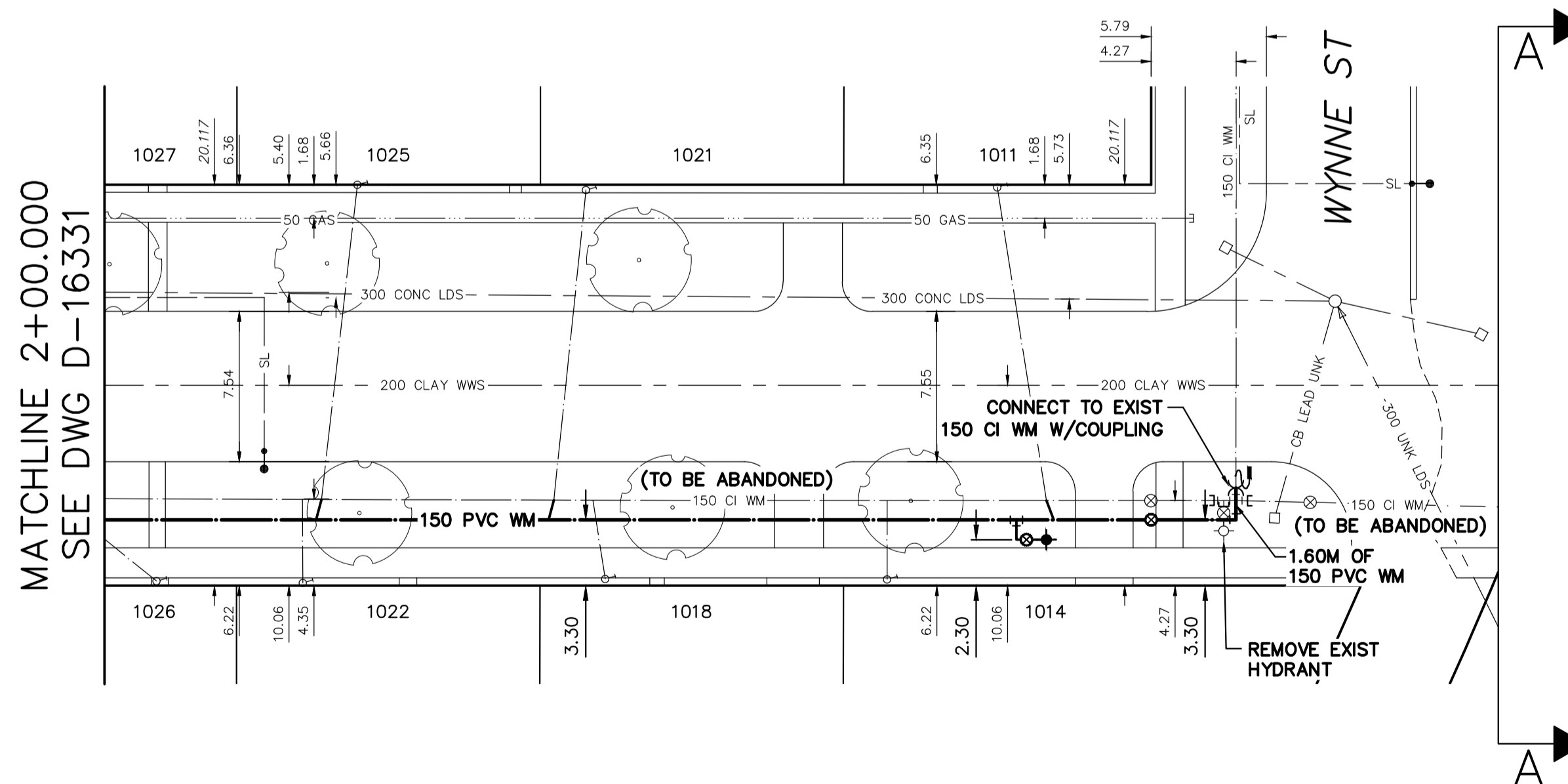
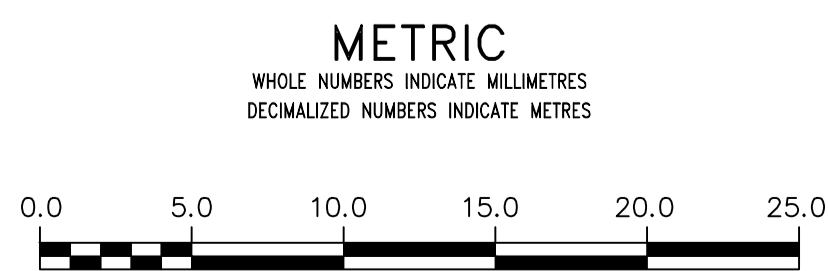


NOTE: CHAINAGES SHOWN ARE ALONG S. R. OF EDDERTON STREET

EDDERTON AVENUE



MATCHLINE 2+00.000
SEE DWG D-16331



WARNING
IF POWER EQUIPMENT OR EXPLOSIVES ARE TO BE USED FOR EXCAVATION ON THIS PROJECT THE CONTRACTOR MUST:
1) NOTIFY THE GAS COMPANY OF THE PROPOSED LOCATION OF EXCAVATION.
2) TAKE PRECAUTION TO AVOID DAMAGE TO GAS COMPANY INSTALLATIONS.
SEE PROVINCIAL REGULATION 210/72 FOR DETAILS

UNDERGROUND STRUCTURES
SUPV. U/G STRUCTURES COMMITTEE DATE
NOTE:
LOCATION OF UNDERGROUND STRUCTURES AS SHOWN ARE BASED ON THE BEST INFORMATION AVAILABLE BUT NO GUARANTEE IS GIVEN THAT ALL EXISTING UTILITIES ARE SHOWN OR THAT THE GIVEN LOCATIONS ARE EXACT. CONFIRMATION OF EXISTENCE AND EXACT LOCATION OF ALL SERVICES MUST BE OBTAINED FROM THE INDIVIDUAL UTILITIES BEFORE PROCEEDING WITH CONSTRUCTION.

VERTICAL DATUM: CGVD28 (HT2.0 Geoid)	
HORIZONTAL DATUM: NAD83 (June 1990), Zone 14	
NO.	REVISIONS

DESIGNED BY	RG	CHECKED BY	SC
DRAWN BY	AOM	APPROVED BY	KZ
SCALE:		RELEASED FOR CONSTRUCTION	
HORIZONTAL	1:250		
VERTICAL	1:50		
DATE	2022 07 14	DATE	
PLOT DATE:	2022 07 14		

ENGINEER'S SEAL
CONSULTANT DRAWING NUMBER

THE CITY OF WINNIPEG
WATER AND WASTE DEPARTMENT
ENGINEERING DIVISION

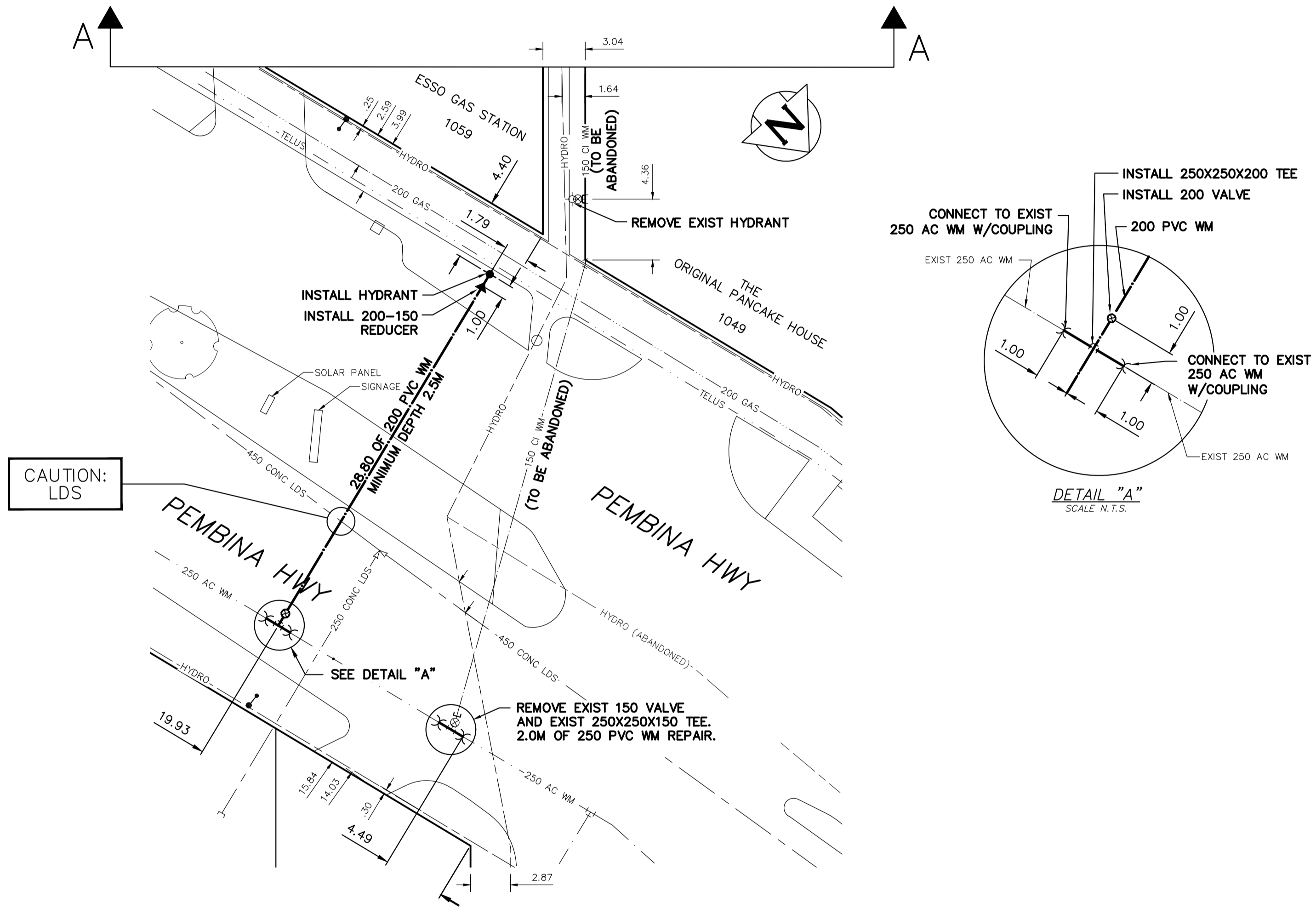
2022 WATER MAIN RENEWALS
CONTRACT 12
EDDERTON AVENUE
87 E OF ROCKMAN STREET TO WYNNE STREET
PEMBINA HIGHWAY TO 14 W OF PEMBINA HIGHWAY

SHEET 5 OF 14
CITY DRAWING NUMBER
D-16332

WATER SERVICE INFORMATION

ADDRESS	SIZE (mm) MATERIAL (STREET)	SIZE (mm) MATERIAL (PROP.)	SHORT & LONG MEASUREMENT	CORP LOCATION	REMARKS
1011 EDDERTON AVENUE RESIDENTIAL	20 CU	20	2.43 EWL HSE	144.835 EEL ROCKMAN STREET	2.5 E OF S/C RECONNECT SERVICE
1014 EDDERTON AVENUE RESIDENTIAL	20 CU	20	8.67 EWL HSE	139.300 EEL ROCKMAN STREET	OPP OF S/C RECONNECT SERVICE
1018 EDDERTON AVENUE RESIDENTIAL	20 CU	20	1.48 EWL HSE	125.142 EEL ROCKMAN STREET	0.6 W OF S/C RECONNECT SERVICE
1021 EDDERTON AVENUE RESIDENTIAL	20 CU	20	1.24 EWL HSE	124.186 EEL ROCKMAN STREET	1.6 W OF S/C RECONNECT SERVICE
1022 EDDERTON AVENUE RESIDENTIAL	20 CU	20	1.30 EWL HSE	109.953 EEL ROCKMAN STREET	OFF OF S/C RECONNECT SERVICE
1025 EDDERTON AVENUE RESIDENTIAL	20 CU	20	1.56 EWL HSE	112.702 EEL ROCKMAN STREET	1.8 W OF S/C RECONNECT SERVICE
1026 EDDERTON AVENUE RESIDENTIAL	20 CU	20	3.00 WEL HSE	102.635 WEL ROCKMAN STREET	5.1 W OF S/C RECONNECT SERVICE

* SERVICES TO BE RENEWED TO R. ALL OTHERS TO BE RECONNECTED



FOR INDEX SEE D-16133

NOTE: ALL VALVES TO BE INSTALLED CLOCKWISE TO CLOSE