

WATER SERVICE INFORMATION

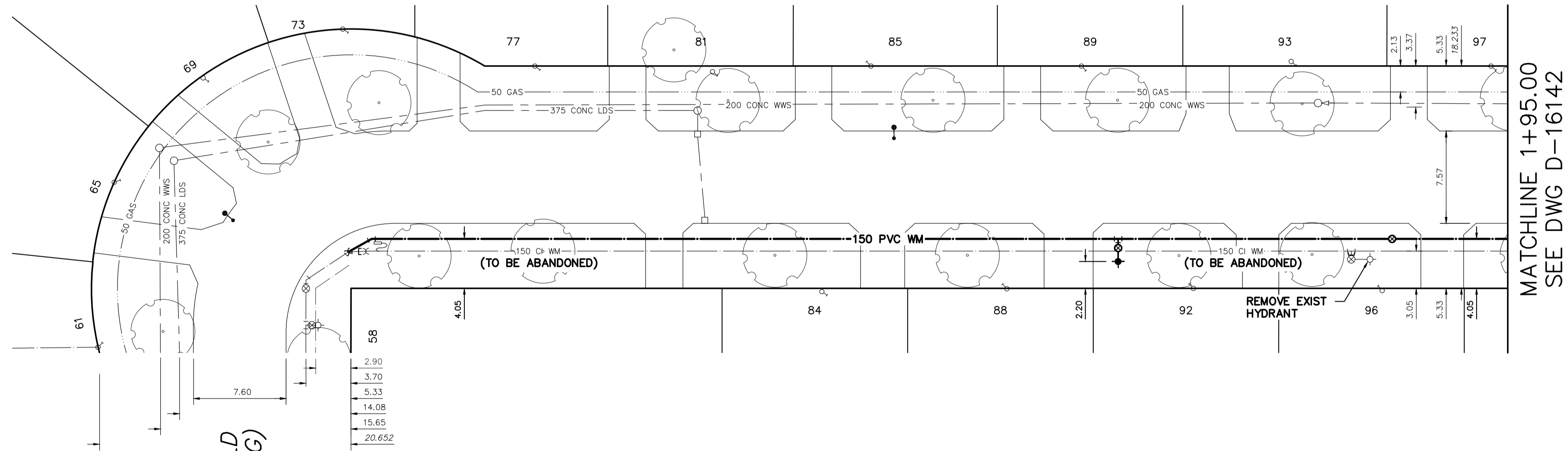
ADDRESS	SIZE (mm) MATERIAL (STREET)	SIZE (mm) MATERIAL (PROP.)	SHORT & LONG MEASUREMENT	CORP. LOCATION	REMARKS
61 SUMMERFIELD WAY	-	20	3.36 WEL HSE	N/A	OUTSIDE LIMITS
RESIDENTIAL	-	CU	4.832 SSL OF SUMMERFIELD WAY (N-LEG)	-	-
65 SUMMERFIELD WAY	-	20	5.63 NSL HSE	N/A	OUTSIDE LIMITS
RESIDENTIAL	-	CU	8.696 NSL OF SUMMERFIELD WAY (N-LEG)	-	-
69 SUMMERFIELD WAY	-	20	5.05 EWL HSE	-	RECONNECT SERVICE
RESIDENTIAL	-	CU	17.270 WEL OF SUMMERFIELD WAY (W-LEG)	-	-
73 SUMMERFIELD WAY	-	20	3.84 WEL HSE	-	RECONNECT SERVICE
RESIDENTIAL	-	CU	3.054 NNL OF SUMMERFIELD WAY (N-LEG)	-	-
77 SUMMERFIELD WAY	-	20	4.00 WEL HSE	N/A	RECONNECT SERVICE
RESIDENTIAL	-	CU	15.110 EEL OF SUMMERFIELD WAY (W-LEG)	-	-
81 SUMMERFIELD WAY	-	20	4.77 WEL HSE	N/A	RECONNECT SERVICE
RESIDENTIAL	-	CU	29.698 EEL OF SUMMERFIELD WAY (W-LEG)	-	-
84 SUMMERFIELD WAY	-	20	3.64 WEL HSE	N/A	RECONNECT SERVICE
RESIDENTIAL	-	CU	38.669 EEL OF SUMMERFIELD WAY (W-LEG)	-	-
88 SUMMERFIELD WAY	-	20	3.79 EWL HSE	N/A	RECONNECT SERVICE
RESIDENTIAL	-	CU	42.709 EEL OF SUMMERFIELD WAY (W-LEG)	-	-
89 SUMMERFIELD WAY	-	20	3.70 WEL HSE	N/A	RECONNECT SERVICE
RESIDENTIAL	-	CU	53.868 EEL OF SUMMERFIELD WAY (W-LEG)	-	-
89 SUMMERFIELD WAY	-	20	3.98 EWL HSE	N/A	RECONNECT SERVICE
RESIDENTIAL	-	CU	59.991 EEL OF SUMMERFIELD WAY (W-LEG)	-	-
92 SUMMERFIELD WAY	-	20	3.77 WEL HSE	N/A	RECONNECT SERVICE
RESIDENTIAL	-	CU	69.187 EEL OF SUMMERFIELD WAY (W-LEG)	-	-
93 SUMMERFIELD WAY	-	20	6.56 WEL HSE	N/A	RECONNECT SERVICE
RESIDENTIAL	-	CU	77.880 EEL OF SUMMERFIELD WAY (W-LEG)	-	-
96 SUMMERFIELD WAY	-	20	3.77 WEL HSE	N/A	RECONNECT SERVICE
RESIDENTIAL	-	CU	84.586 EEL OF SUMMERFIELD WAY (W-LEG)	-	-
97 SUMMERFIELD WAY	-	20	5.44 EWL HSE	N/A	RECONNECT SERVICE
RESIDENTIAL	-	CU	93.622 EEL OF SUMMERFIELD WAY (W-LEG)	-	-

(1) LINEAR DISTANCE FROM THE S/C TO THE CORP USED ALONG BENDS & CURVED R.O.W.
 (2) DIRECTION FROM S/C

★ SERVICES TO BE RENEWED TO R. ALL OTHERS TO BE RECONNECTED

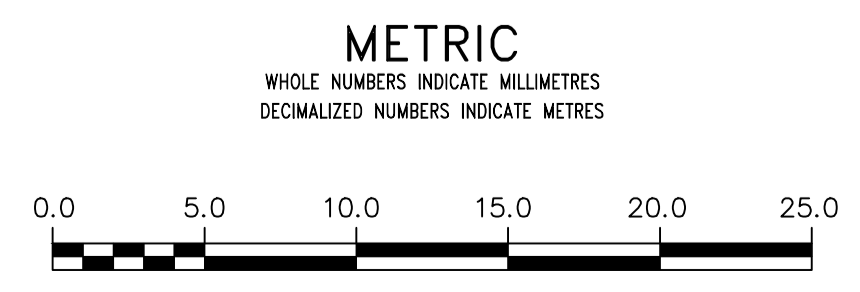
NOTE: CHAINAGES SHOWN ARE ALONG N. R. OF SUMMERFIELD WAY (N-LEG)

SUMMERFIELD WAY (N LEG)



FOR INDEX SEE D-16133

NOTE: ALL VALVES TO BE INSTALLED COUNTERCLOCKWISE TO CLOSE



WARNING
 IF POWER EQUIPMENT OR EXPLOSIVES ARE TO BE USED FOR EXCAVATION ON THIS PROJECT THE CONTRACTOR MUST:
 1) NOTIFY THE GAS COMPANY OF THE PROPOSED LOCATION OF EXCAVATION.
 2) TAKE PRECAUTION TO AVOID DAMAGE TO GAS COMPANY INSTALLATIONS.
 SEE PROVINCIAL REGULATION 210/72 FOR DETAILS

LOCATION APPROVED UNDERGROUND STRUCTURES
 SUPV. U/G STRUCTURES COMMITTEE _____ DATE _____
 NOTE:
 LOCATION OF UNDERGROUND STRUCTURES AS SHOWN ARE BASED ON THE BEST INFORMATION AVAILABLE BUT NO GUARANTEE IS GIVEN THAT ALL EXISTING UTILITIES ARE SHOWN OR THAT THE GIVEN LOCATIONS ARE EXACT. CONFIRMATION OF EXISTENCE AND EXACT LOCATION OF ALL SERVICES MUST BE OBTAINED FROM THE INDIVIDUAL UTILITIES BEFORE PROCEEDING WITH CONSTRUCTION.

VERTICAL DATUM: CGVD28 (HT2.0 Geoid)
 HORIZONTAL DATUM: NAD83 (June 1990), Zone 14

NO.	REVISIONS	DATE	BY

DESIGNED BY: RG	CHECKED BY: SC
DRAWN BY: AOM	APPROVED BY: KZ
SCALE: HORIZONTAL: 1:250 VERTICAL: 1:50	RELEASED FOR CONSTRUCTION
DATE: 2022 07 14	DATE: _____

ENGINEER'S SEAL
 CONSULTANT DRAWING NUMBER

THE CITY OF WINNIPEG
 WATER AND WASTE DEPARTMENT
 ENGINEERING DIVISION

2022 WATER MAIN RENEWALS
 CONTRACT 12
SUMMERFIELD WAY (N-LEG)
 SUMMERFIELD WAY (W-LEG) TO
 97 E OF SUMMERFIELD WAY (W-LEG)

SHEET 12 OF 14
 CITY DRAWING NUMBER
D-16140