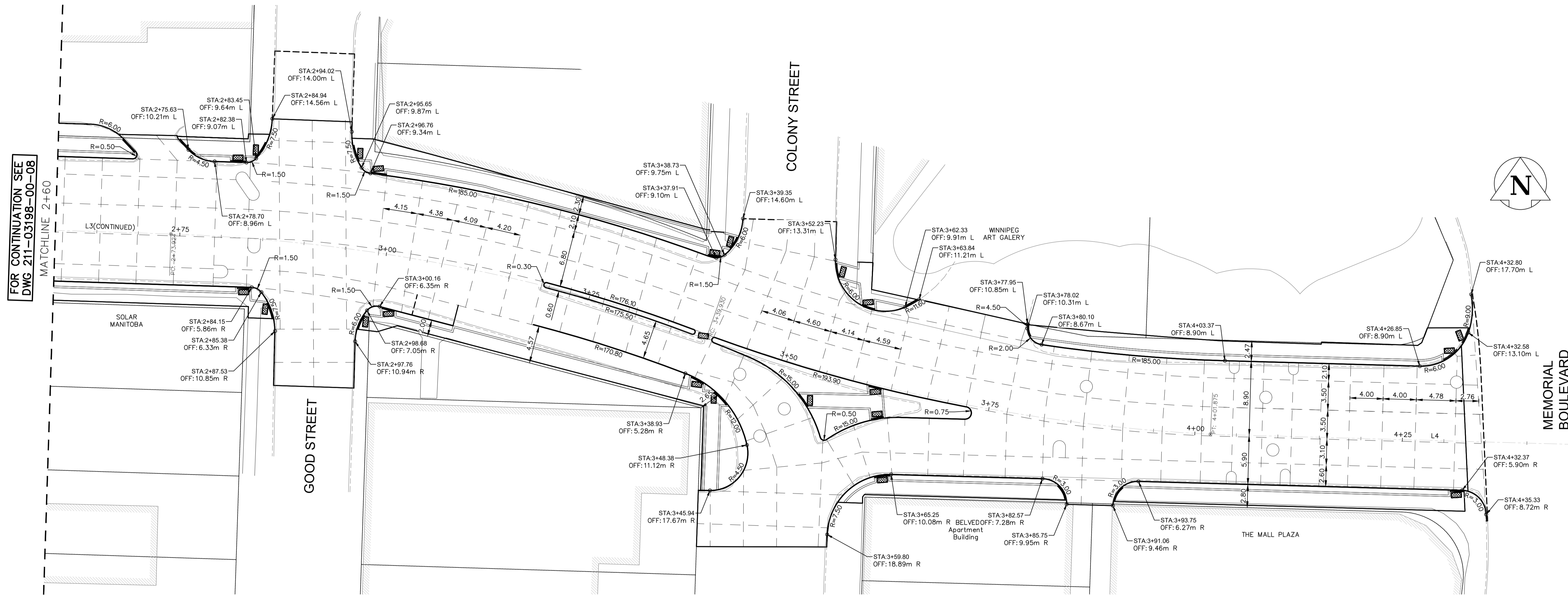
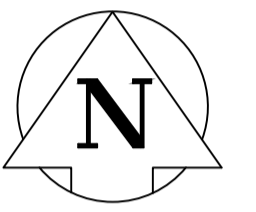


Feb 24, 2022 - 3:26pm - Pioneer_William Renewal Project\1.4.0 Tech & Professional Services\Drawings\04 Working Drawings\StMary_Geometry Plan.dwg - tab:807-2021_Drawing_211-03198-00-09-RA



FOR CONTINUATION SEE DWG 211-03198-00-08



Line Table: ST. MARY AVENUE ALIGNMENT

LINE #	LENGTH	START STATION	END STATION	START POINT	END POINT
L3	53.23	2+20.69	2+73.92	N 5527932.493, E 632681.848	N 5527930.769, E 632735.049
L4	83.50	4+01.88	4+85.38	N 5527906.670, E 632860.232	N 5527904.357, E 632943.705

LOCATIONS APPROVED UNDERGROUND STRUCTURES	
SIGNED BY:	DATE
SUPV UG STRUCTURES	

G.B.M. ELEV.		TOP NUT OF FIRE HYDRANT AT	
H			
G			
F			
E			
D			
C			
B	ISSUED FOR TENDER	25-02-2022	SS
A	ISSUED FOR PRELIMINARY DESIGN REVIEW	09-02-2022	SS
NO.	REVISIONS	DATE	BY

wsp

DESIGNED BY: MV/SS
 DRAWN BY: SB
 CHECKED BY: SS
 APPROVED BY: SM

WSP Canada Inc.
 1600 Buffalo Place
 Winnipeg, MB R3T 6B8
 t. 204.477.6650
 f. 204.474.2864
 www.wsp.com

DATE: AUGUST 2021

ENGINEER'S SEAL	
CONSULTANT ACAD DWG. NO.	211-03198-00-09

FOR TENDER PURPOSES ONLY
NOT FOR CONSTRUCTION

METRIC
 WHOLE NUMBERS INDICATE MILLIMETRES
 DECIMALIZED NUMBERS INDICATE METRES

ENGINEERS GEOSCIENTISTS MANITOBA
 Certificate of Authorization
 WSP Canada Inc.
 No. 5750

EXISTING	LEGEND-PLAN	PROPOSED	EXISTING	LEGEND-PLAN	PROPOSED	EXISTING	LEGEND-PROFILE	PROPOSED
	WATER MAIN			IRON BAR			HYDRO POLE & LIGHT STANDARD	
	LAND DRAINAGE SEWER			LIGHT STANDARD OR TRAFFIC SIGNAL			HYDRO POLE	
	WASTE WATER SEWER			CURB RAMP			DETECTABLE WARNING SURFACE TILE	
	HYDRO			EDGE OF SIDEWALK			FENCE	
	BELL/MTS			PROPERTY LINE			EDGE OF ASPHALT	
	GAS			EDGE OF CONCRETE			MODIFIED BARRIER CURB	
	SIGNALS			BARRIER CURB			BARRIER CURB AND GUTTER	
	MANHOLE			CONC SIDEWALK			NORTH OR WEST SIDEWALK	
	CATCH BASIN			CONCRETE SLAB			SOUTH OR EAST SIDEWALK	
	CURB INLET			ASPHALT			ROADWAY CENTRELINE	
	UTILITIES ADJUSTED			MILLED SURFACE			NORTH OR WEST GUTTER	
	PLUG			PAVEMENT REPAIR FABRIC			SOUTH OR EAST GUTTER	
	HYDRANT							
	VALVE							
	CURB STOP							
	GROUND GRADE							
	PAVEMENT GRADE							
	ANCHOR							
	CIVIC ADDRESS							

THE CITY OF WINNIPEG
 PUBLIC WORKS DEPARTMENT
 ENGINEERING SERVICES DIVISION

2021-2022 PIONEER, WILLIAM STEPHENSON,
 COLONY & ST.MARY RENOVALS PROJECT

ST. MARY AVENUE - HORIZONTAL GEOMETRY
 CONCRETE RECONSTRUCTION
 STA. 2+60 TO STA. 4+35.40

CITY DRAWING NUMBER: P-3546-09
 SHEET: 09 OF 19
 TENDER NO.: 807-2021