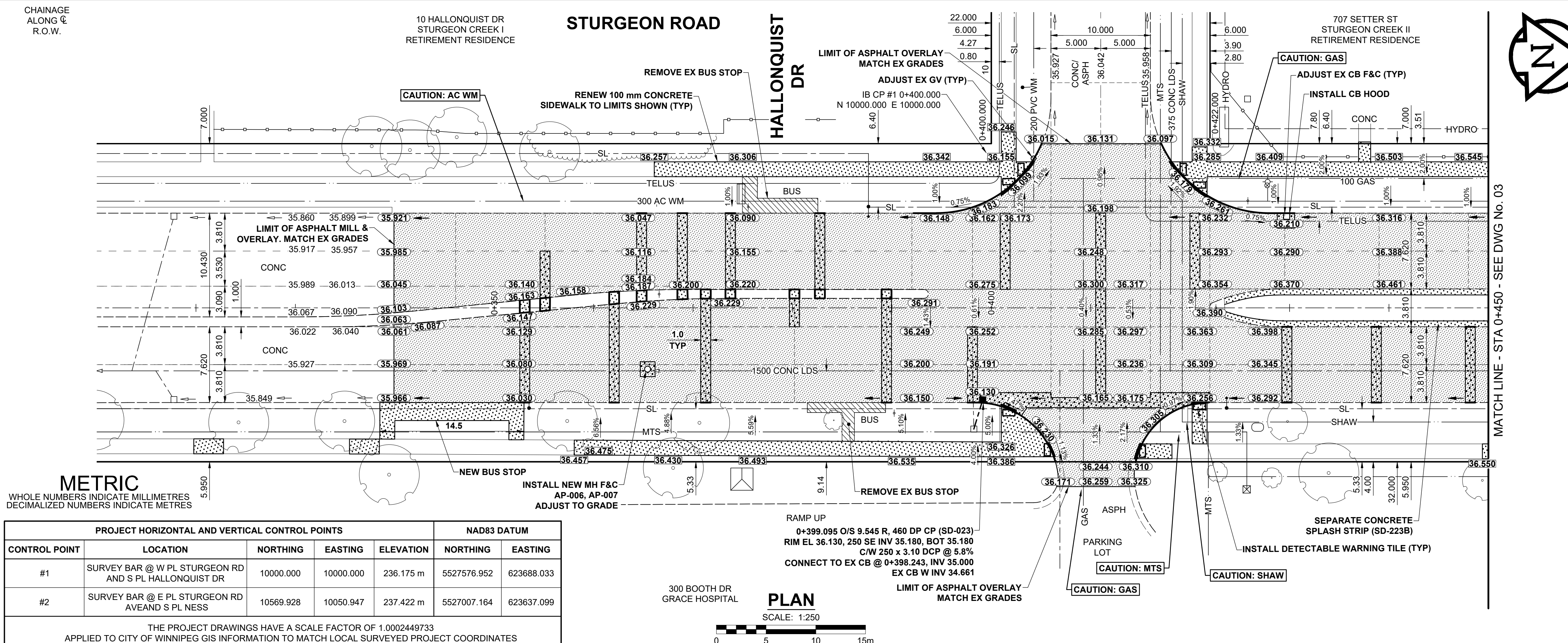
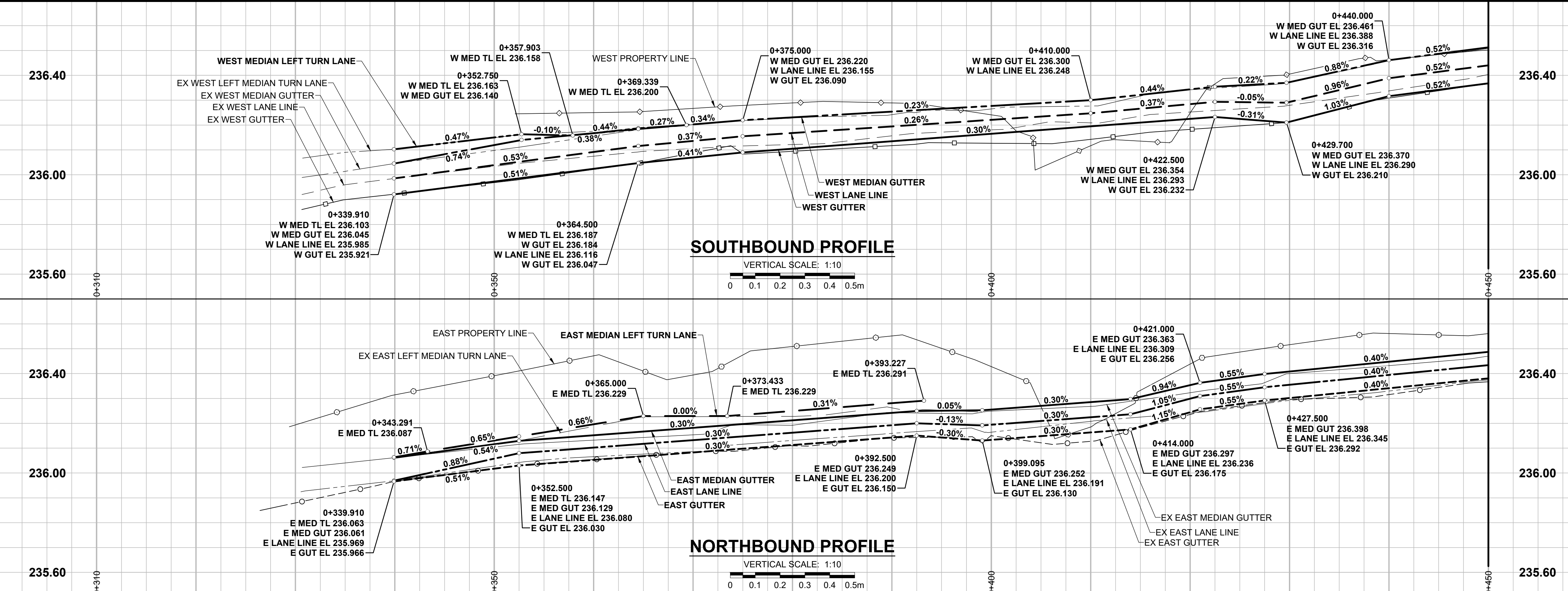


ISO A1 - 594mm x 841mm
X:\P\02\121054800\2022\Sturgeon Road Rehab\09_CAD\07 Sheets\210548-Sturgeon-PP-01.dwg
Last Saved: 12/22/2022 9:37 AM by Dulane
Plotted: 18/2022 11:47 AM by Dave Lane



METRIC
WHOLE NUMBERS INDICATE MILLIMETRES
DECIMAL NUMBERS INDICATE METRES

PROJECT HORIZONTAL AND VERTICAL CONTROL POINTS					NAD83 DATUM	
CONTROL POINT	LOCATION	NORTHING	EASTING	ELEVATION	NORTHING	EASTING
#1	SURVEY BAR @ W PL STURGEON RD AND S PL HALLONQUIST DR	10000.000	10000.000	236.175 m	5527576.952	623688.033
#2	SURVEY BAR @ E PL STURGEON RD AND S PL NESS	10569.928	10050.947	237.422 m	5527007.164	623637.099

THE PROJECT DRAWINGS HAVE A SCALE FACTOR OF 1.0002449733
APPLIED TO CITY OF WINNIPEG GIS INFORMATION TO MATCH LOCAL SURVEYED PROJECT COORDINATES

EXISTING	LEGEND - PLAN	NEW	EXISTING	LEGEND - PLAN	NEW	EXISTING	LEGEND - PLAN	NEW
---	GAS	○	MANHOLE	●	CONCRETE PAVEMENT	▨	CONCRETE PAVEMENT	▨
○	MTS HANDWELL/PEDESTAL	□	CATCH BASIN/CATCH PIT	■	CONC SIDEWALK/MEDIAN	▨	CONC SIDEWALK/MEDIAN	▨
○	HYDRO HANDWELL/CABINET	△	CURB INLET WITH BOX	▲	ASPHALT PAVEMENT	▨	ASPHALT PAVEMENT	▨
○	CATV/FIBRE OPTIC	⊙	TREE	▲	PAVING STONE	▨	PAVING STONE	▨
○	TRAFFIC SIGNALS/PIT	⊕	TEST HOLE	▲	GRAVEL	▨	GRAVEL	▨
○	LAND DRAINAGE SEWER	⊕	PROPERTY LINE	▲	RAMP CURB	▨	RAMP CURB	▨
○	SANITARY/COMBINED SEWER	⊕	SURVEY BAR	▲	PLANING/REMOVAL	▨	PLANING/REMOVAL	▨
○	CB LEAD/SSP/DCP	⊕	FENCE	▲				
○	WATERMAIN	⊕	BOC/EDGE OF PAVEMENT	▲				
○	SUBDRAIN	33.000	ELEVATION	(33.333)				
○	DITCH	+	TRAFFIC SIGN					

PLAN
SCALE: 1:250

RAMP UP
0+399.095 O/S 9.545 R, 460 DP CP (SD-023)
RIM EL 36.130, 250 SE INV 35.180, BOT 35.180
C/W 250 x 3.10 DCP @ 5.8%
CONNECT TO EX CB @ 0+398.243, INV 35.000
EX CB W INV 34.661

300 BOOTH DR GRACE HOSPITAL

LIMIT OF ASPHALT OVERLAY MATCH EX GRADES

CAUTION: GAS
CAUTION: MTS
CAUTION: SHAW

LOCATION APPROVED
UNDERGROUND STRUCTURES

DATE: _____

NOTE:
LOCATION OF UNDERGROUND STRUCTURES AS SHOWN ARE BASED ON THE BEST INFORMATION AVAILABLE BUT NO GUARANTEE IS GIVEN THAT ALL EXISTING UTILITIES ARE SHOWN OR THAT THE GIVEN LOCATIONS ARE EXACT. CONFIRMATION OF EXISTENCE AND EXACT LOCATION OF ALL SERVICES MUST BE OBTAINED FROM THE INDIVIDUAL UTILITIES BEFORE PROCEEDING WITH CONSTRUCTION.

B	ISSUED FOR TENDER	22/01/05	ACK
A	ISSUED FOR CLIENT REVIEW	21/11/30	ACK
No.	REVISIONS	Y/M/D	BY

HOR SCALE: 1:250
VERT SCALE: 1:10

RELEASED FOR CONSTRUCTION
DATE: NOVEMBER 30, 2021

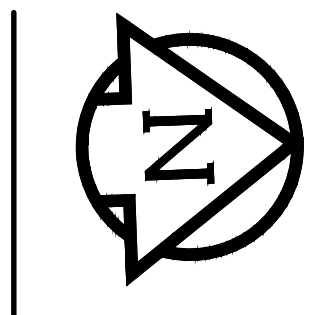
DESIGNED BY: ACK
CHECKED BY: WRJ
DRAWN BY: DML
APPROVED BY: RPB

PROFESSIONAL'S SEAL
ORIGINAL DRAWING REV No. B
SEALED BY: A.C. KAUFMANN
Member 34804
January 5, 2022

CONSULTANT FILE NAME
2105498-Sturgeon-PP-01.dwg

- AC WATERMAIN NOTES**
- USE OF VIBRATORY HEAVY EQUIPMENT WITHIN 3.0 METERS HORIZONTALLY OF THE ASBESTOS-CONCRETE WATER MAIN CENTERLINE IS PROHIBITED. THIS RESTRICTION DOES NOT APPLY TO THE USE OF VIBRATORY ROLLERS ON THE PAVEMENT SURFACE LAYER.
 - CONCRETE DEMOLITION AND REMOVAL WITHIN 3.0 METERS HORIZONTALLY OF THE ASBESTOS-CONCRETE WATER MAIN SHALL BE COMPLETED BY SAW CUTTING OR USE OF HAND-HELD JACKHAMMERS. USE OF MACHINE MOUNTED CONCRETE BREAKERS ABOVE ASBESTOS-CONCRETE WATER MAINS IS PROHIBITED.

- NOTES**
- ADJUST MH AND CB RIMS TO NEW GRADES.
 - LAMP STANDARDS, HYDRO POLES, AND ANCHORS THAT REQUIRE TEMPORARY SUPPORT, REMOVAL OR REPLACEMENT, TO BE DONE SO AT THE EXPENSE OF THE CONTRACTOR AS NECESSARY.
 - CONTRACTOR TO REGRADE/RENEW EXISTING PRIVATE SIDEWALKS TO LIMITS AS SHOWN. SIDEWALKS TO BE RENEWED WITH CONCRETE UNLESS NOTED OTHERWISE.
 - CONTRACTOR TO TAKE PRECAUTIONARY STEPS TO PROTECT EXISTING TREES WITHIN THE LIMITS OF CONSTRUCTION FROM DAMAGE FROM CONSTRUCTION ACTIVITIES AS OUTLINED IN THE SPECIFICATIONS.
 - CONTRACTOR TO CONFIRM THE LOCATION OF ALL UTILITIES/SERVICES IN THE FIELD PRIOR TO CONSTRUCTION.
 - MODIFIED BARRIER CURB TO BE USED AT ALL INTERSECTION RADII, BACK LANE RADII AND BULLNOSES.
 - CONTRACTOR TO OVERLAY DRIVEWAYS TO ENSURE POSITIVE DRAINAGE TO NEW STREET GRADES. FINAL LIMITS TO BE DETERMINED IN THE FIELD BY CONTRACT ADMINISTRATOR.
 - CB SD-023 & SD-024 OFFSETS ARE DIMENSIONED TO BOC. CB SD-025 OFFSETS ARE DIMENSIONED O/C.
 - REFER TO TENDER FOR DETAILS REGARDING TRAFFIC MANAGEMENT.
 - ADJUST EXISTING WATER VALVES AND WATER SERVICE CURB STOPS TO GRADE.
 - ADD 200.000 m TO ABBREVIATED ELEVATIONS TO OBTAIN GEODETIC ELEVATIONS.



TENDER No. 714-2021

THE CITY OF WINNIPEG
PUBLIC WORKS DEPARTMENT
ENGINEERING DIVISION

2022 REGIONAL STREET RENEWAL PROGRAM
STURGEON ROAD REHABILITATION
HALLONQUIST DR TO NESS AVE
STURGEON ROAD
PAVING AND GRADING
HALLONQUIST DR TO STA 0+450

CITY DRAWING NUMBER: P-3553-02
SHEET OF: 02 OF 06
DRAWING NUMBER: 02