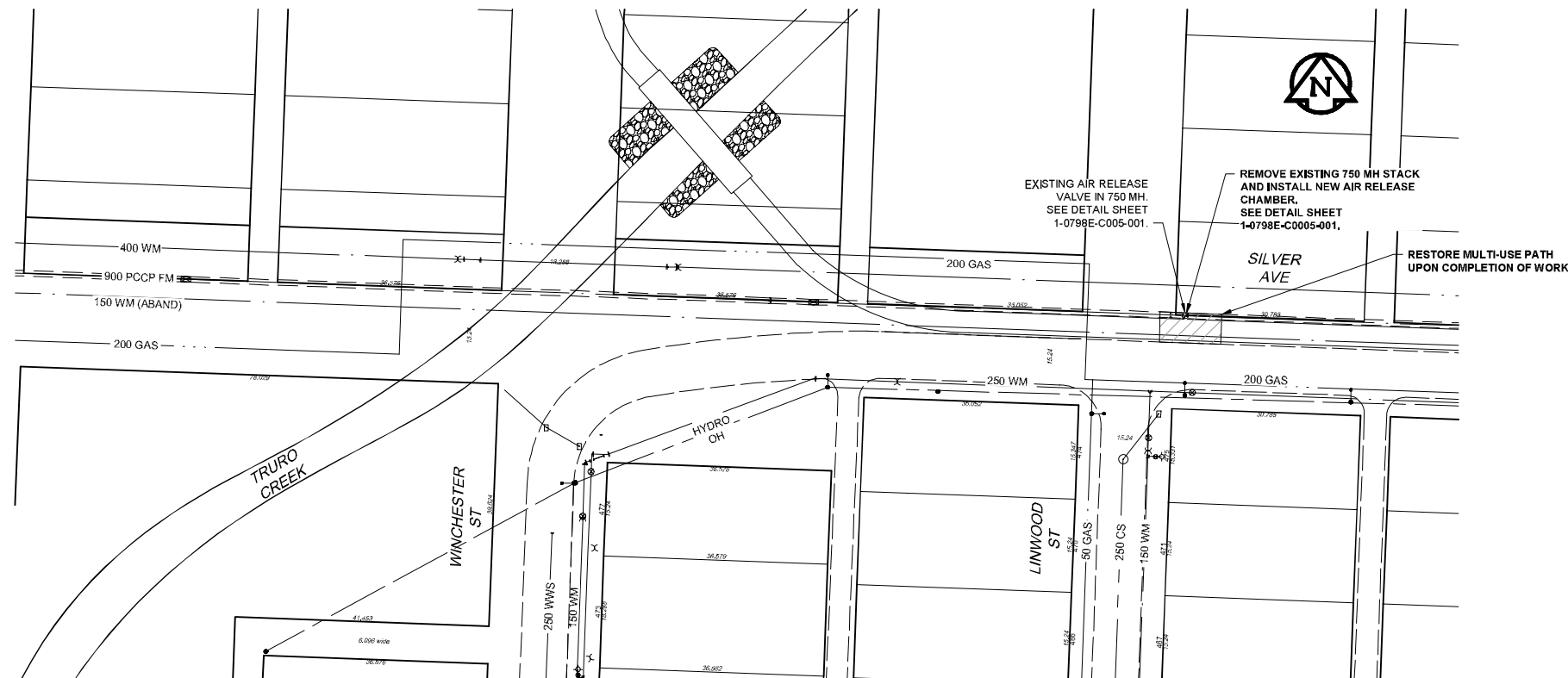


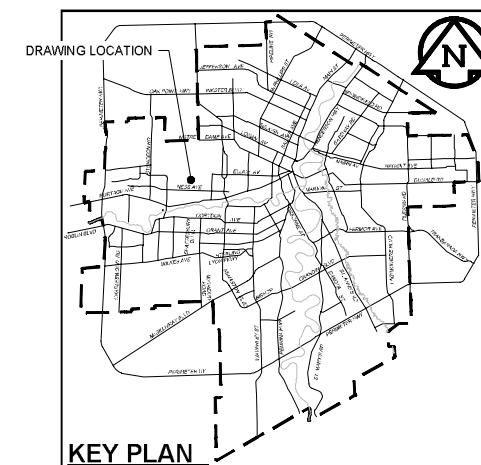
SITE PLAN

Scale 1:1500
 0 37.5 75
 m
 1:1500



PLAN

Scale 1:500
 0 12.5 25
 m

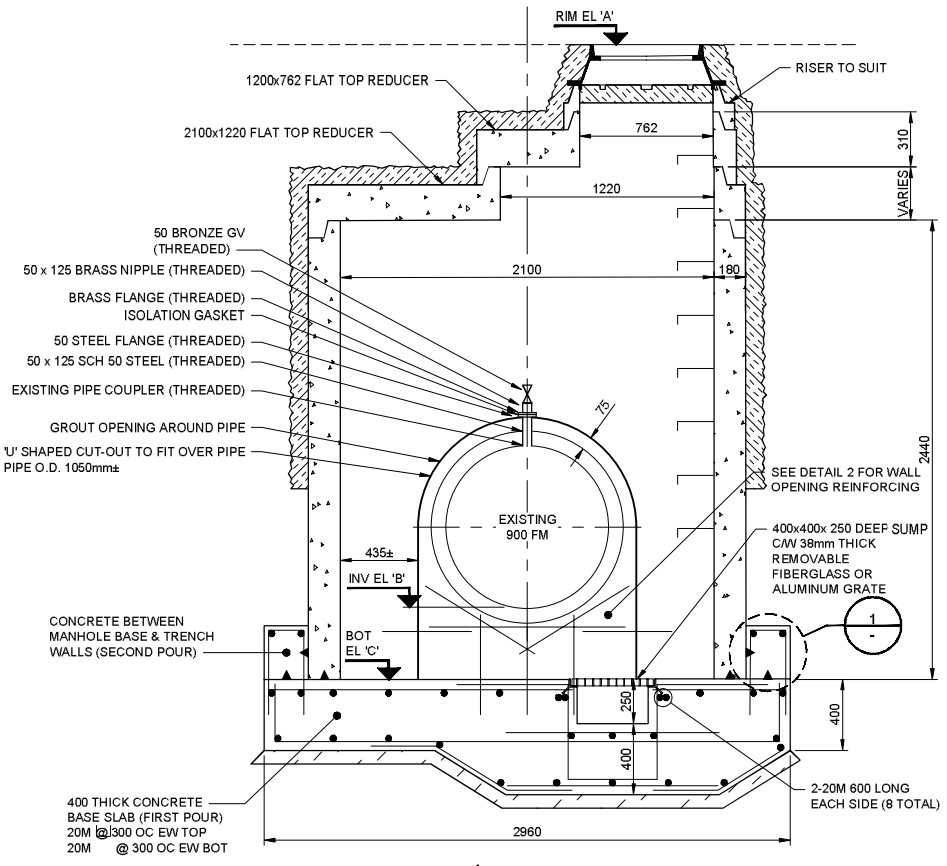


KEY PLAN

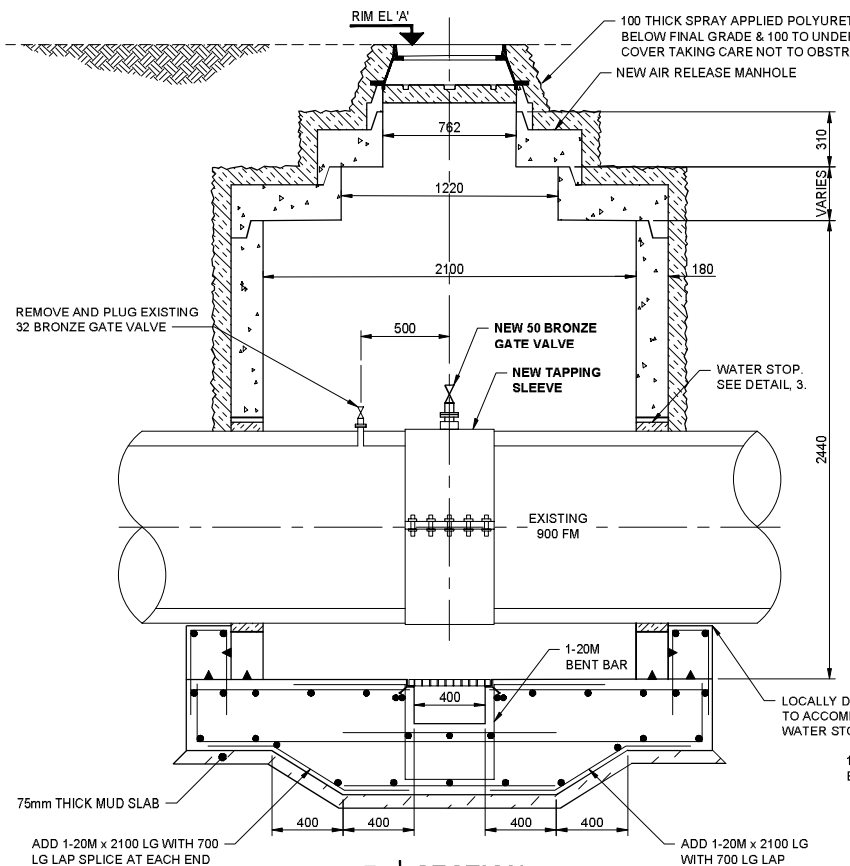
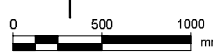
ENGINEERS
GEOSCIENTISTS
MANITOBA
 Certificate of Authorization
 AECOM Canada Ltd.
 No. 4671 Date: June 21, 2022

METRIC
 WHOLE NUMBERS INDICATE MILLIMETRES
 DECIMALIZED NUMBERS INDICATE METRES

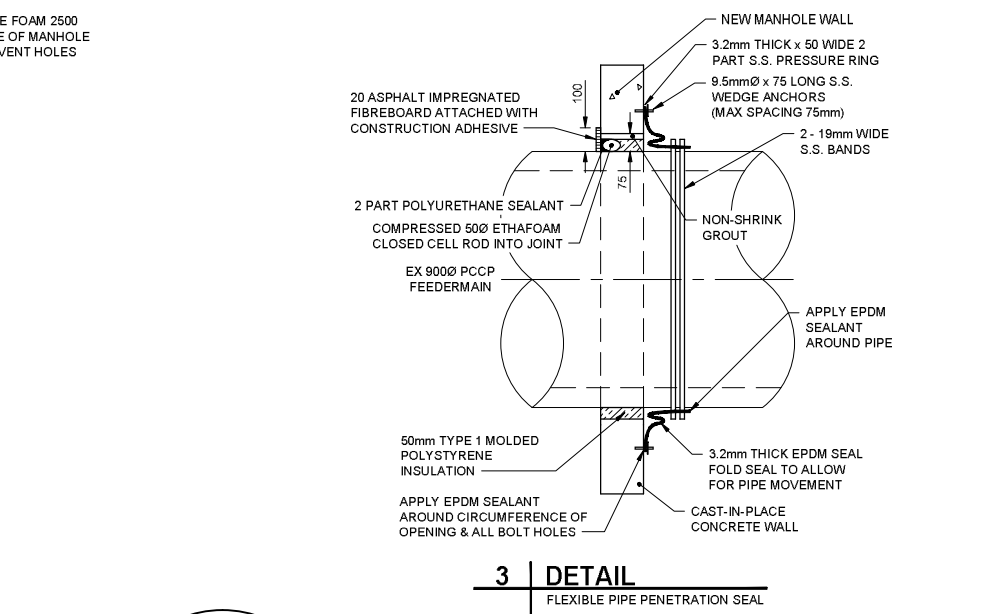
| | | | | | | | | |
|---|---|--|---------------------|--|---|--|--|---|
| <p>WARNING</p> <p>IF POWER EQUIPMENT OR EXPLOSIVES ARE TO BE USED FOR EXCAVATION ON THIS PROJECT THE CONTRACTOR MUST:</p> <p>1) NOTIFY THE GAS COMPANY OF THE PROPOSED LOCATION OF EXCAVATION.</p> <p>2) TAKE PRECAUTION TO AVOID DAMAGE TO GAS COMPANY INSTALLATIONS.</p> <p>SEE PROVINCIAL REGULATION 210/72 FOR DETAILS</p> | <p>LOCATION APPROVED UNDERGROUND STRUCTURES</p> <p>SUPV. U/G STRUCTURES COMMITTEE DATE</p> <p>NOTE: LOCATION OF UNDERGROUND STRUCTURES AS SHOWN ARE BASED ON THE BEST INFORMATION AVAILABLE BUT NO GUARANTEE IS GIVEN THAT ALL EXISTING UTILITIES ARE SHOWN OR THAT THE GIVEN LOCATIONS ARE EXACT. CONFIRMATION OF EXISTENCE AND EXACT LOCATION OF ALL SERVICES MUST BE OBTAINED FROM THE INDIVIDUAL UTILITIES BEFORE PROCEEDING WITH CONSTRUCTION.</p> | <p>B.M. 84R505 N.W. Cor. Saskatchewan Ave. & Midland St. Tbt. on top of 0.05 m dia. x 1.2 m iron pipe 10.2 m S. of N.L. of Saskatchewan Ave. & 5.6 m E. of W.L. of Midland St.</p> <p>CONSTRUCTION COMPLETION DATE: YYYY MM DD</p> | <p>AECOM</p> | | <p>ENGINEER'S SEAL</p> <p>ORIGINAL SIGNED BY J. Thompson June 21, 2022</p> | <p>THE CITY OF WINNIPEG WATER AND WASTE DEPARTMENT ENGINEERING DIVISION</p> | <p>PROVISION OF PIPELINE ACCESS MODIFICATIONS, CLEANING AND SUPPORT SERVICES FOR RIVER CROSSING INSPECTIONS - PHASE THREE SITE 9 WEST END FEEDER MAIN (at TRURO CREEK)</p> | <p>SHEET 08 OF 11 CITY DRAWING NUMBER 1-0798E-C0004-001</p> |
| | | | | | | | | |



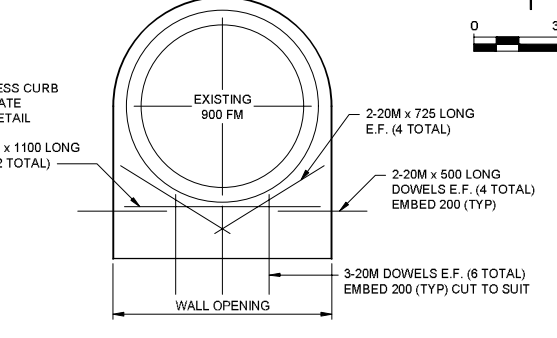
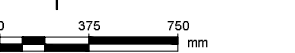
A SECTION



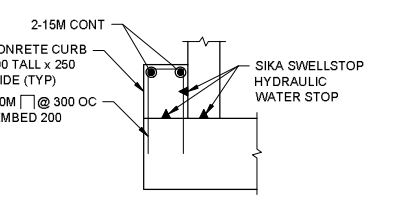
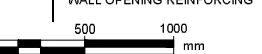
B SECTION



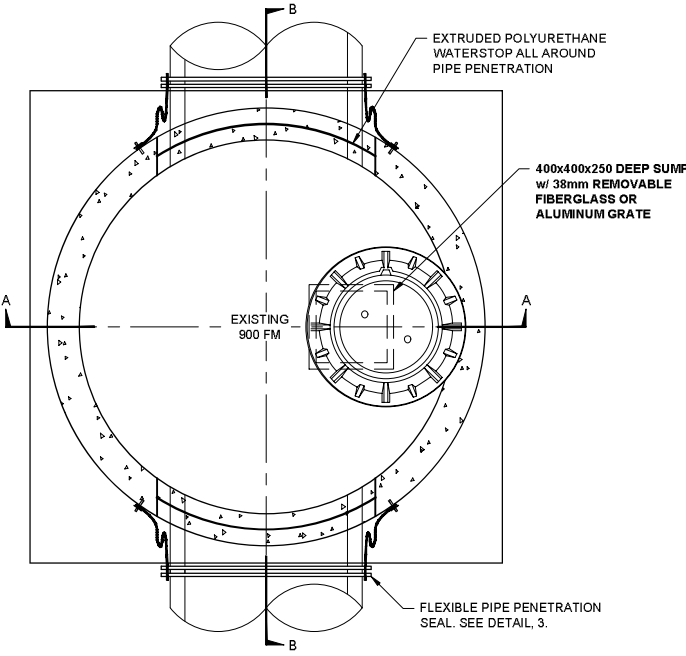
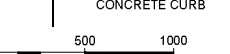
3 DETAIL
FLEXIBLE PIPE PENETRATION SEAL



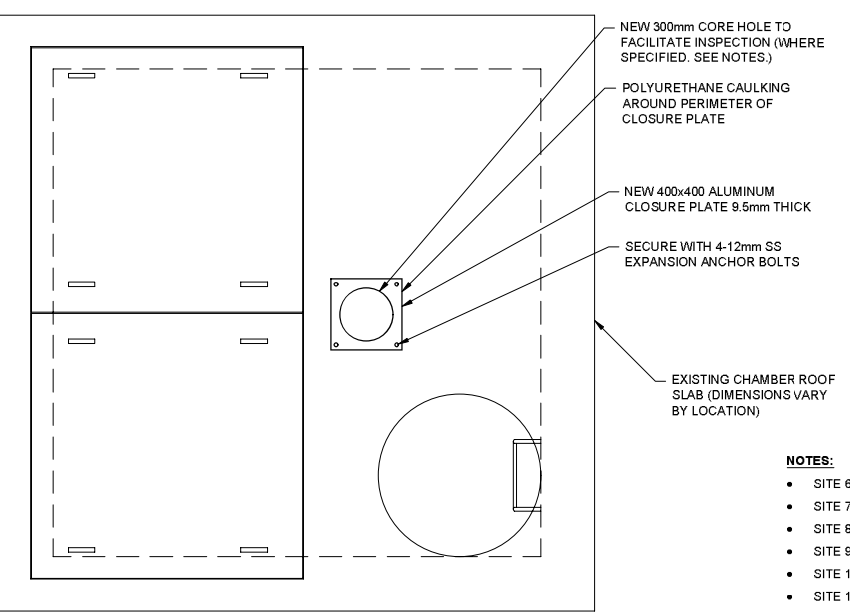
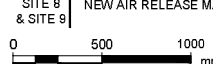
2 DETAIL
WALL OPENING REINFORCING



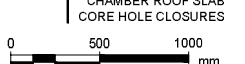
1 DETAIL
CONCRETE CURB



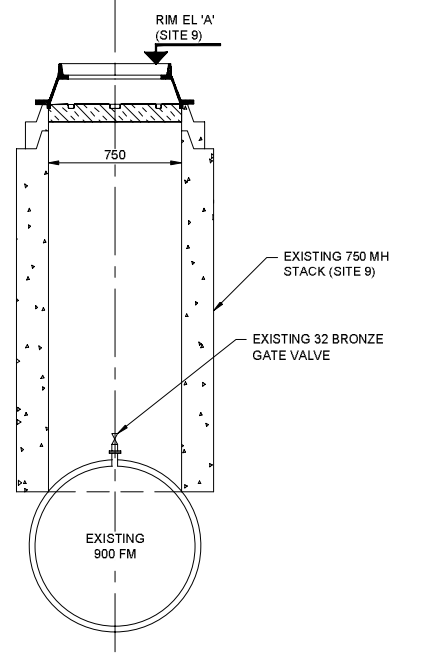
PLAN
SITE 8 & SITE 9
NEW AIR RELEASE MANHOLE



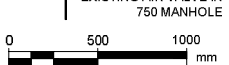
DETAIL
CHAMBER ROOF SLAB
CORE HOLE CLOSURES



- NOTES:**
- SITE 6 DAKOTA FEEDER MAIN: UTILIZE EXISTING CORE HOLE.
 - SITE 7 ROUGE ROAD FEEDER MAIN: NEW CORE HOLE REQUIRED.
 - SITE 8 WEST END FEEDER MAIN (OMAND'S CREEK): CORE HOLE NOT REQUIRED.
 - SITE 9 WEST END FEEDER MAIN (TRURO CREEK): CORE HOLE NOT REQUIRED.
 - SITE 10 HANEY-MORAY FEEDER MAIN: UTILIZE EXISTING CORE HOLE.
 - SITE 11 MURRAY AVENUE FEEDER MAIN: NEW CORE HOLE REQUIRED.



SECTION
SITE 9
EXISTING AIR VALVE IN
750 MANHOLE



AIR RELEASE VALVE MANHOLE ELEVATIONS (m)

| MANHOLE LOCATION | SITE 8 - WEST END FM @ OMAND'S CREEK | SITE 9 - WEST END FM @ TRURO CREEK |
|---------------------------------|--------------------------------------|------------------------------------|
| 'A' - RIM ELEVATION | 233.700 | 234.712 |
| 'B' - EX 900 FEEDER MAIN INVERT | 229.900 | 231.100 |
| 'C' - BOTTOM ELEVATION | 229.500 | 230.700 |

WARNING

IF POWER EQUIPMENT OR EXPLOSIVES ARE TO BE USED FOR EXCAVATION ON THIS PROJECT THE CONTRACTOR MUST:

- 1) NOTIFY THE GAS COMPANY OF THE PROPOSED LOCATION OF EXCAVATION.
- 2) TAKE PRECAUTION TO AVOID DAMAGE TO GAS COMPANY INSTALLATIONS.

SEE PROVINCIAL REGULATION 210/172 FOR DETAILS

LOCATION APPROVED UNDERGROUND STRUCTURES

SUPV. U/C STRUCTURES COMMITTEE DATE

NOTE: LOCATION OF UNDERGROUND STRUCTURES AS SHOWN ARE BASED ON THE BEST INFORMATION AVAILABLE BUT NO GUARANTEE IS GIVEN THAT ALL EXISTING UTILITIES ARE SHOWN OR THAT THE GIVEN LOCATIONS ARE EXACT. CONFIRMATION OF EXISTENCE AND EXACT LOCATION OF ALL SERVICES MUST BE OBTAINED FROM THE INDIVIDUAL UTILITIES BEFORE PROCEEDING WITH CONSTRUCTION.

B.M. 84R505 N.W. Cor. Saskatchewan Ave. & Midland St. Tbt. on top of 0.05 m dia. x 1.2 m iron pipe 10.2 m S. of N.L. of Saskatchewan Ave. & 5.6 m E. of W.L. of Midland St.

CONSTRUCTION COMPLETION DATE: YYYY MM DD

| NO. | ISSUED FOR TENDER | REVISIONS | DATE | BY |
|-----|-------------------|-----------|----------|-----|
| 0 | ISSUED FOR TENDER | | 22/06/15 | ADL |

AECOM

DESIGNED BY: TJB
DRAWN BY: ADL
SCALE: HORIZONTAL AS NOTED
VERTICAL: N/A

CHECKED BY: MGM
APPROVED BY: KWF
RELEASED FOR CONSTRUCTION: Paul Bortoluzzi

DATE: 2022 06 21
DATE: Jun 21/22

ENGINEER'S SEAL

ORIGINAL SIGNED BY J. Thompson
June 21, 2022

CONSULTANT DRAWING NUMBER: C-4002

THE CITY OF WINNIPEG
WATER AND WASTE DEPARTMENT
ENGINEERING DIVISION

PROVISION OF PIPELINE ACCESS MODIFICATIONS, CLEANING AND SUPPORT SERVICES FOR RIVER CROSSING INSPECTIONS - PHASE THREE MISCELLANEOUS DETAILS WATER SITES

SHEET 10 OF 11
CITY DRAWING NUMBER
1-0798E-C0005-001

ENGINEERS & GEOSCIENTISTS MANITOBA

Certificate of Authorization
AECOM Canada Ltd.
No. 4671 Date: June 21, 2022

METRIC
WHOLE NUMBERS INDICATE MILLIMETRES
DECIMALIZED NUMBERS INDICATE METRES