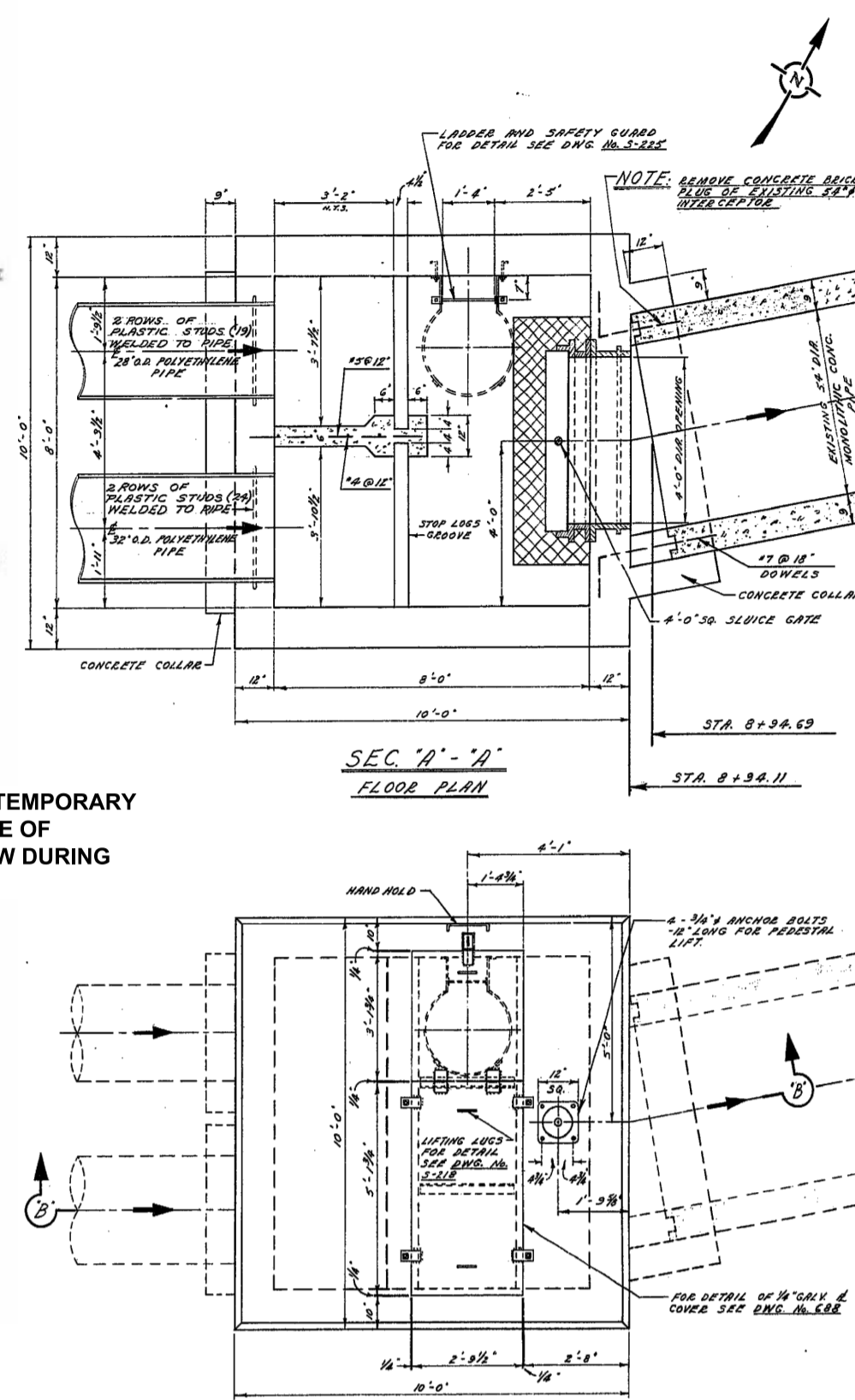
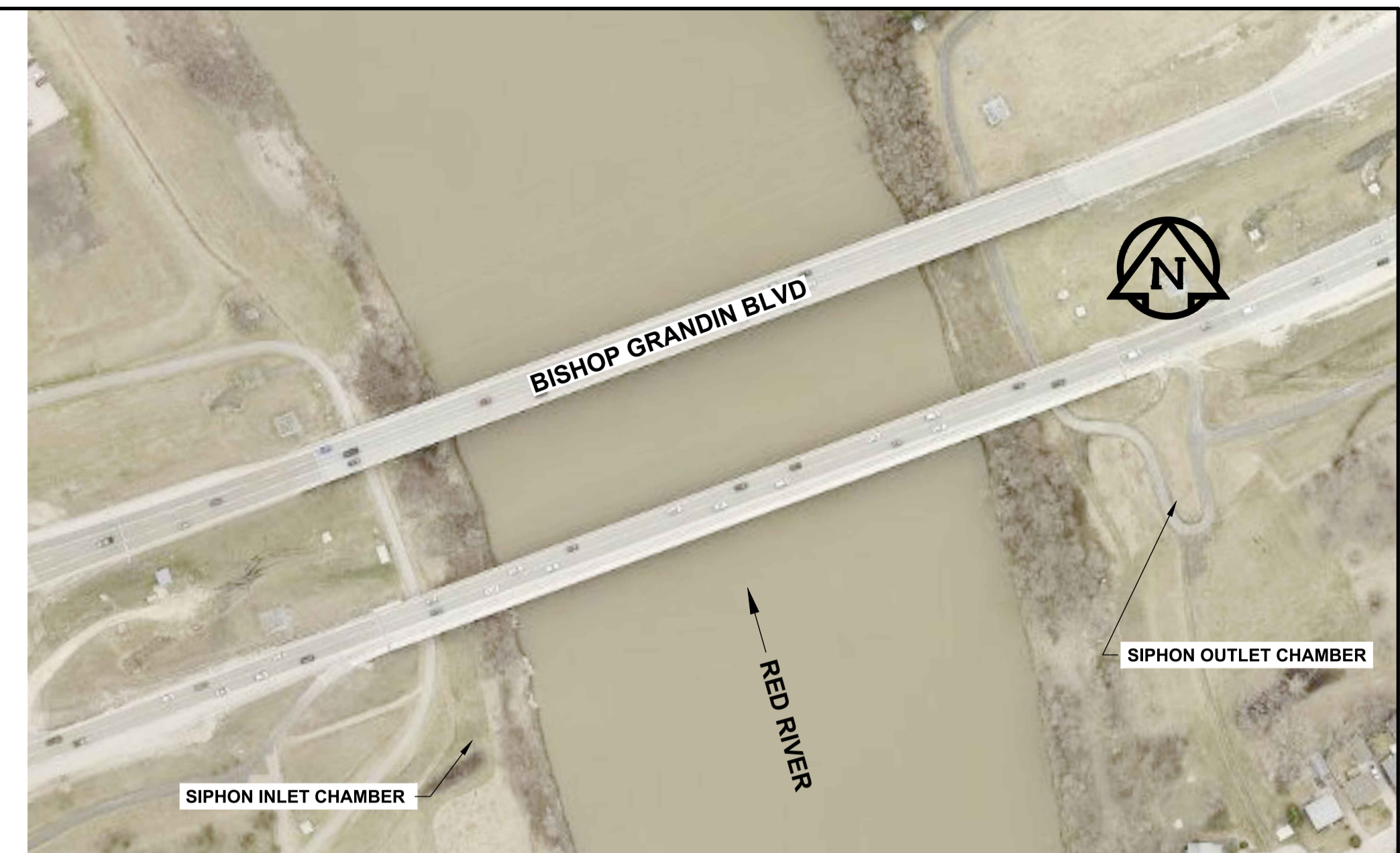
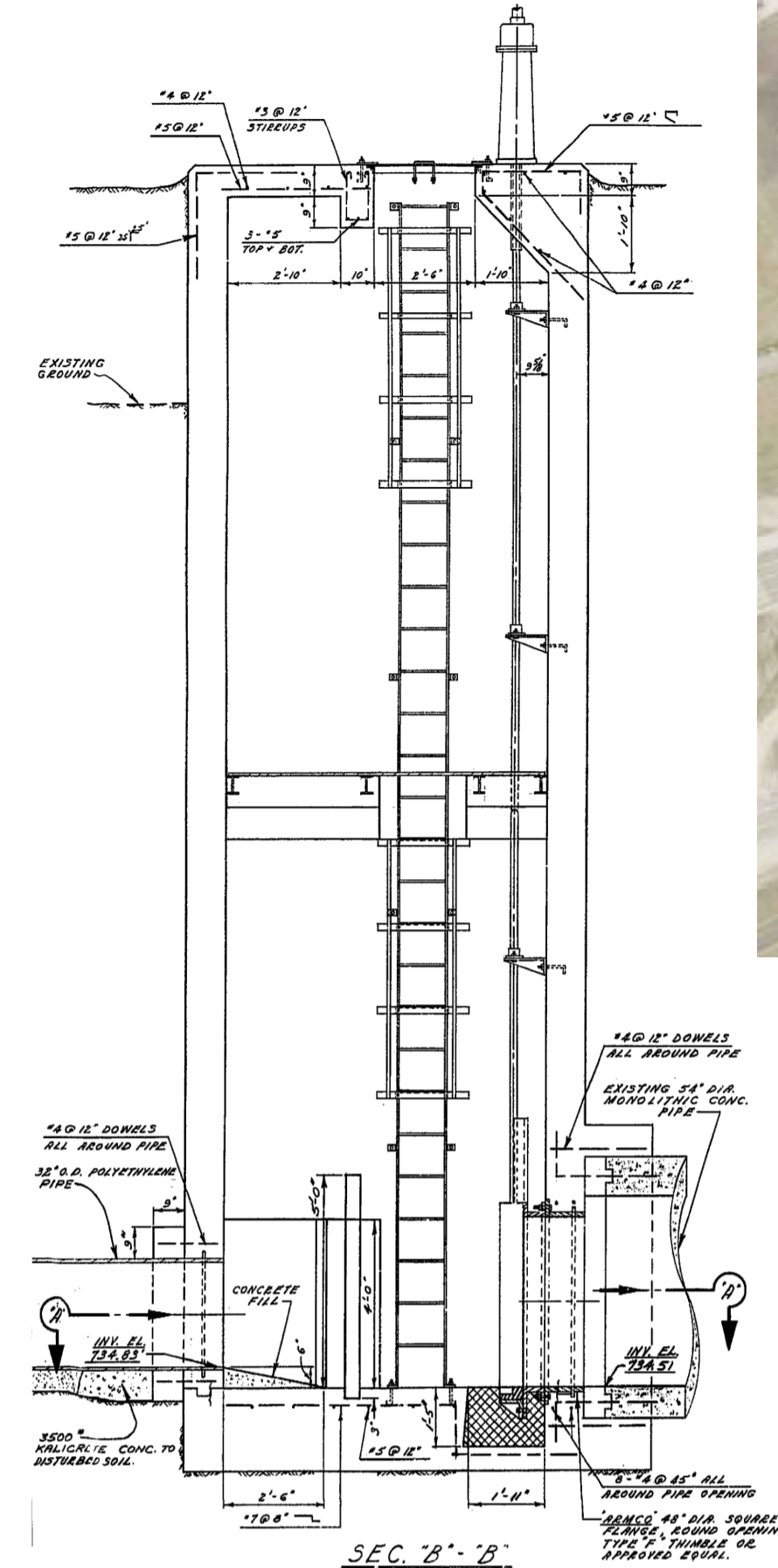


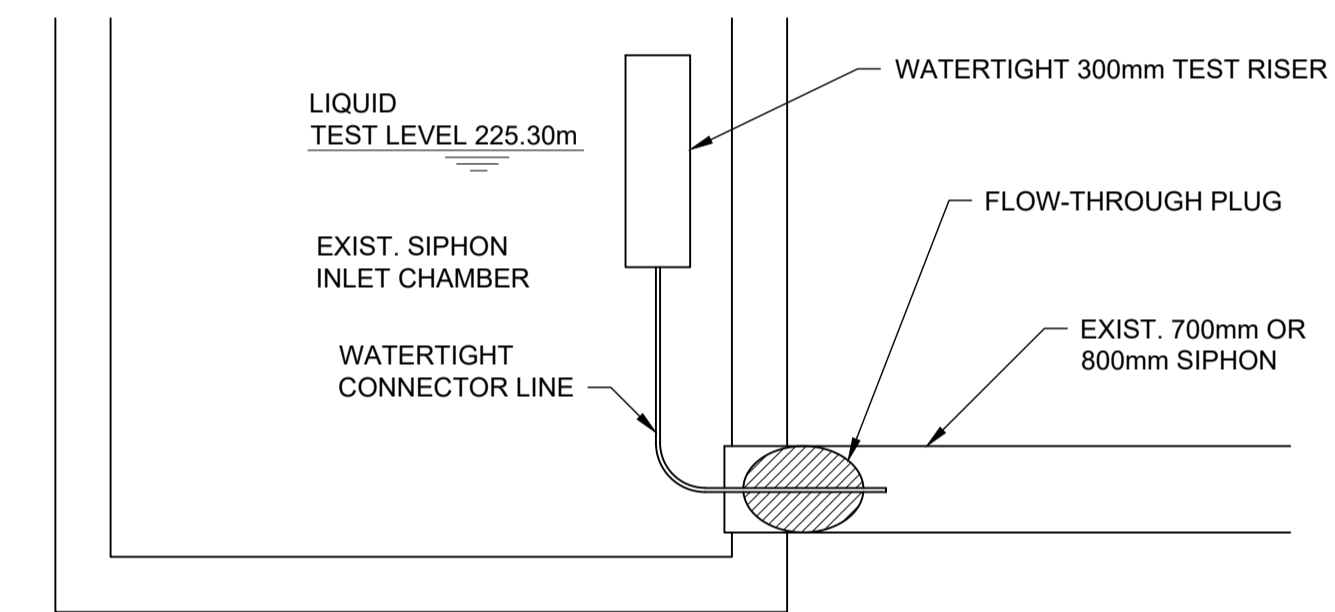
**SIPHON INLET AND OVERFLOW CHAMBERS**  
Scale N.T.S.



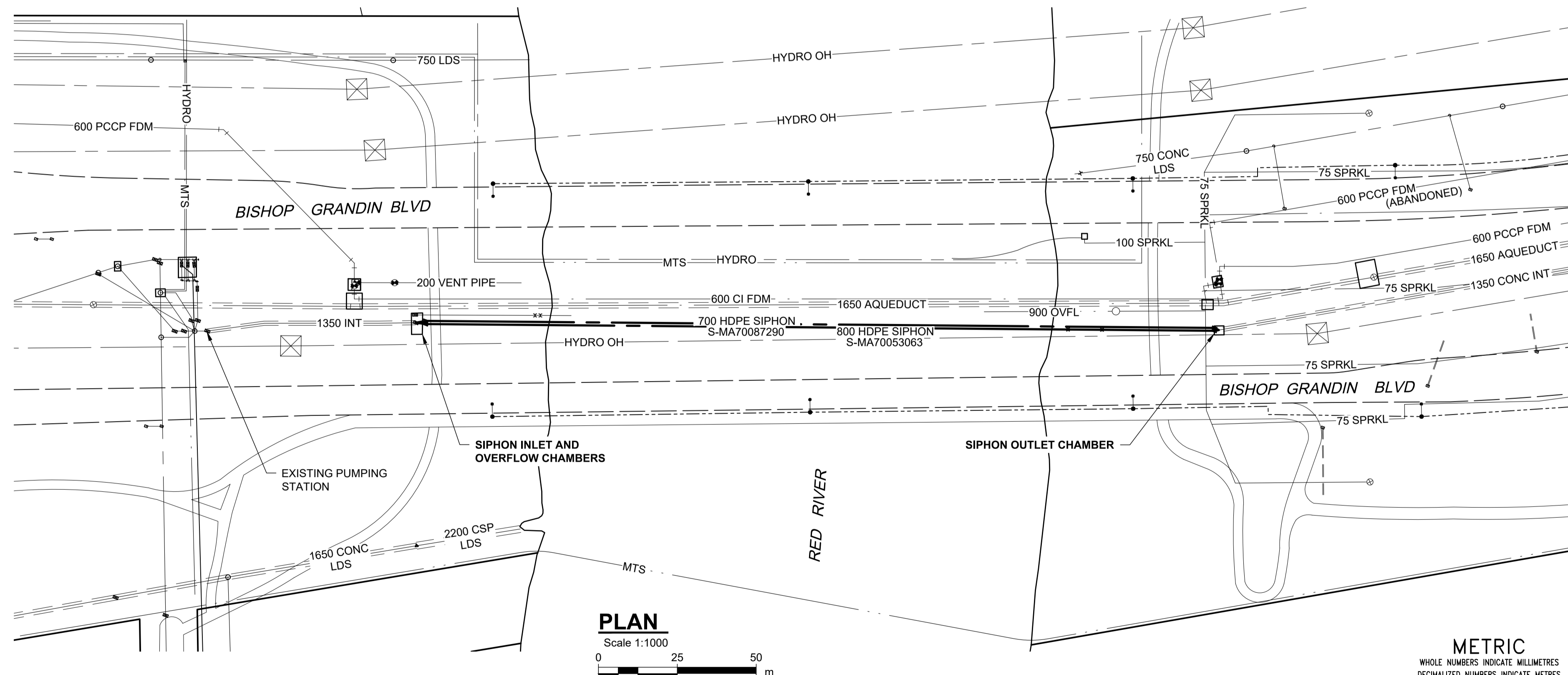
**SIPHON OUTLET CHAMBER**  
Scale N.T.S.



**SITE PLAN**  
Scale 1:1750  
0 43.75 87.50 m

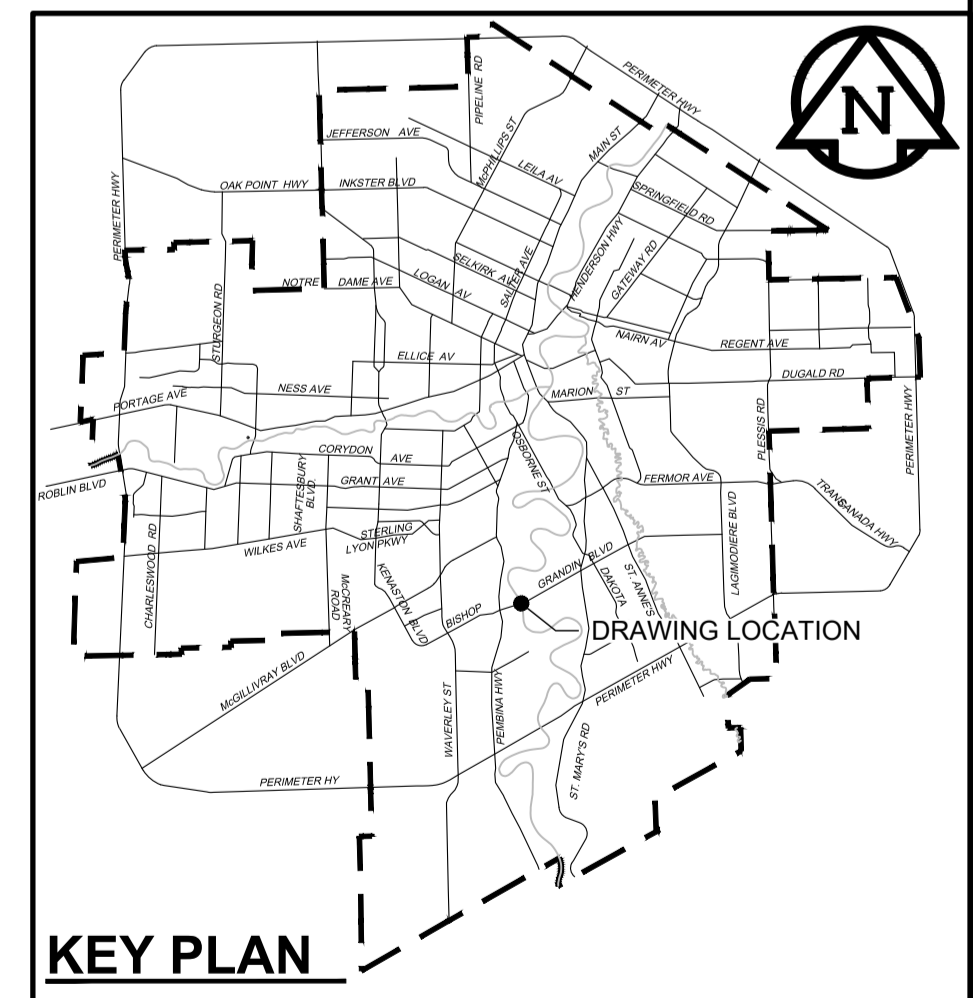


**LOW HEAD LEAKAGE TEST GENERAL SETUP**  
Scale N.T.S.



**PLAN**  
Scale 1:1000  
0 25 50 m

- NOTES:**
- LOW HEAD LEAKAGE TEST NOTES:**
- MONITOR LEVELS IN UPSTREAM CHAMBER THROUGH DURATION OF LEAKAGE TEST.
  - ABANDON TEST AND REMOVE INFLATABLE PLUGS IF LEVELS IN UPSTREAM CHAMBER EXCEED 226.7m
  - UPSTREAM INFLATABLE PLUG TO BE EQUIPPED WITH PORT SUITABLE TO ALLOW ADDITION OF WATER TO THE SIPHON AND MONITORING OF MAKE-UP WATER.
  - TEST LEVEL AT UPSTREAM PORT: 225.3m
- SEQUENCE OF WORK:**
- CLOSE SLUICE GATE ON 900 OUTFALL IN OVERFLOW CHAMBER (BY OTHERS).
  - INSTALL INFLATABLE PLUGS IN BOTH UPSTREAM AND DOWNSTREAM CHAMBERS OF SIPHON BEING TESTED. ONE PLUG TO HAVE FLOW-THROUGH PORT AND TEST RISER.
  - COMPLETE LOW HEAD PRESSURE TEST IN ACCORDANCE WITH CONTRACT SPECIFICATIONS AND DETAIL.
  - UPON COMPLETION OF LOW HEAD PRESSURE TEST, REMOVE PLUGS FROM UPSTREAM AND DOWNSTREAM CHAMBERS AND OPEN SLUICE GATE ON THE 900 OUTFALL IN THE OVERFLOW CHAMBER.



**ENGINEERS GEOSCIENTISTS MANITOBA**  
Certificate of Authorization  
AECOM Canada Ltd.  
No. 4671 Date: June 21, 2022

**WARNING**

IF POWER EQUIPMENT OR EXPLOSIVES ARE TO BE USED FOR EXCAVATION ON THIS PROJECT THE CONTRACTOR MUST:

- NOTIFY THE GAS COMPANY OF THE PROPOSED LOCATION OF EXCAVATION.
- TAKE PRECAUTION TO AVOID DAMAGE TO GAS COMPANY INSTALLATIONS.

SEE PROVINCIAL REGULATION 210/72 FOR DETAILS

**LOCATION APPROVED UNDERGROUND STRUCTURES**

SUPV. U/G STRUCTURES COMMITTEE DATE

NOTE:  
LOCATION OF UNDERGROUND STRUCTURES AS SHOWN ARE BASED ON THE BEST INFORMATION AVAILABLE BUT NO GUARANTEE IS GIVEN THAT ALL EXISTING UTILITIES ARE EXACT. CONFIRMATION OF EXISTENCE AND EXACT LOCATION OF ALL SERVICES MUST BE OBTAINED FROM THE INDIVIDUAL UTILITIES BEFORE PROCEEDING WITH CONSTRUCTION.

B.M. 84R505 N.W. Cor. Saskatchewan Ave. & Midland St., Tbt. on top of 0.05 m dia. x 1.2 m iron pipe 10.2 m S. of N.L. of Saskatchewan Ave. & 5.5 m E. of W.L. of Midland St.  
ELEV. 233.144m

CONSTRUCTION COMPLETION DATE: YYYY MM DD

NO.	ISSUED FOR TENDER	DATE	BY
0	ISSUED FOR TENDER	22/06/15	ADL

**AECOM**

DESIGNED BY: TJB  
CHECKED BY: MGM

DRAWN BY: ADL  
APPROVED BY: KWF

SCALE: HORIZONTAL AS NOTED  
VERTICAL N/A

RELEASED FOR CONSTRUCTION  
Paul Bortoluzzi

DATE: 2022 06 21  
DATE: Jun 21/22

ENGINEER'S SEAL

ORIGINAL SIGNED BY J. Thompson  
June 21, 2022

CONSULTANT DRAWING NUMBER  
C-1004

**THE CITY OF WINNIPEG**  
WATER AND WASTE DEPARTMENT  
ENGINEERING DIVISION

PROVISION OF PIPELINE ACCESS MODIFICATIONS, CLEANING AND SUPPORT SERVICES FOR RIVER CROSSING INSPECTIONS - PHASE THREE

SITE 4  
FORT GARRY - ST. VITAL INTERCEPTOR SIPHONS

SHEET 05 OF 11  
CITY DRAWING NUMBER  
13020